

T-shirt

Size as per your own measurements

Any long-sleeved T-shirt you happen to have on hand can be taken and transformed into a personalised short-sleeved T decorated with lace tape.



Materials:

- Long-sleeved T-Shirt
- 0.60 m soft tulle fabric in colour of T-shirt (depending on desired sleeve circumference; take pattern pieces with you when fabric shopping)
- Assorted lace tape
- BERNINA 3 Series

Create sleeve pattern:

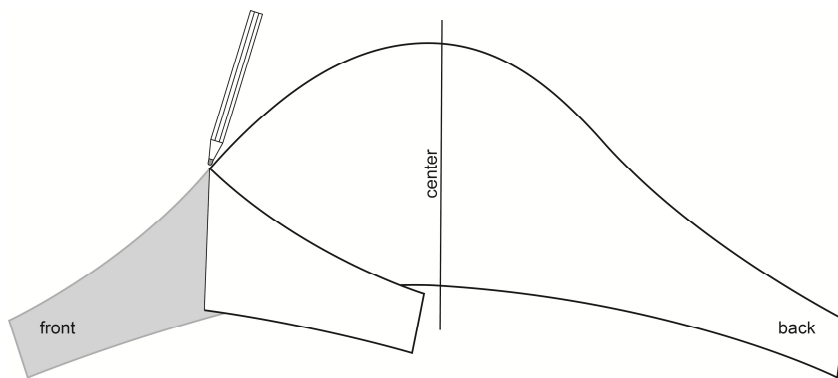
Put on T-shirt and mark in the desired curve at the sleeve. Indicate the point of the shoulder seam on the sleeve section. The sleeve serves as a template for the tulle sleeve you will be constructing.



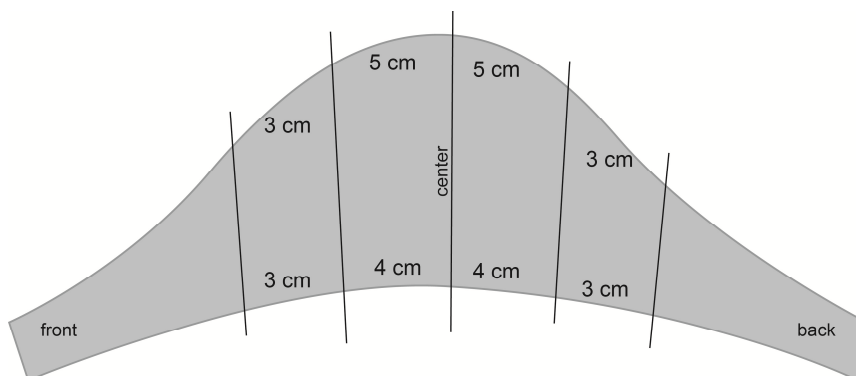
Cut off the sleeve and cut through it along the marked line.



Unpick the sleeve seam. Place the resultant piece on a sheet of paper as a template and trace around it. Now continue working on the paper pattern. Mark shoulder point at top of pattern and indicate sleeve centre on bottom edge. Join points with a vertical line.

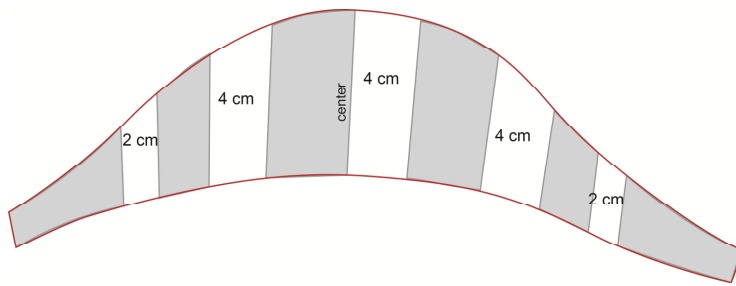


Subdivide sleeve pattern: draw in 5 vertical lines as in the sketch.



Cut sleeve pattern apart at marked lines.

Rearrange the pieces and glue onto a new piece of paper the sketched distances apart. Adjust curves at top and bottom and re-label centre point. Cut out the pattern piece thereby created (= lower-sleeve section).



For the upper sleeve, copy the template and shorten by 3.5 cm at the bottom edge, tapering off the curve at the side seam to the existing size. This yields the upper-sleeve piece.

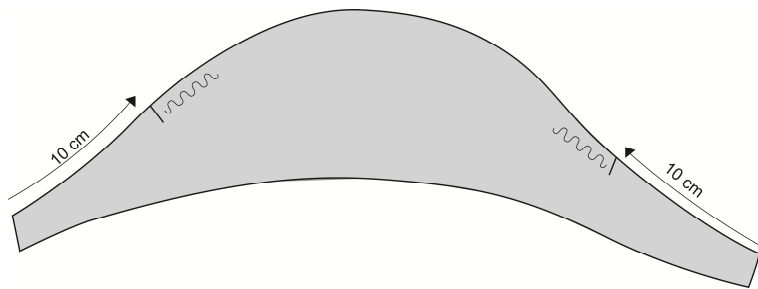
Cutting out tulle fabric:

2 x upper sleeve

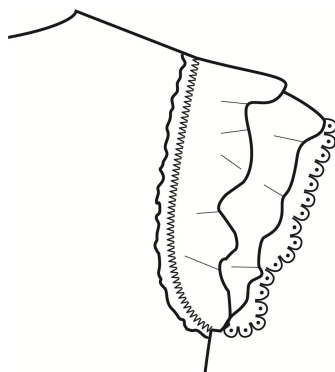
4 x lower sleeve

Instructions:

For each sleeve, pin together 2 long and one short sleeve section. Close sleeve seam. Gather top curve up to 10 cm before and after sleeve seam. Turn sleeve.



Neaten the sleeve curve on the T-shirt. Pin or baste tulle sleeves all around onto the right side of the shirt and sew with a small zigzag stitch.



Sew frills onto the sleeve curve and bottom edge of the tulle as desired.

Tulle skirt

Size as per your own measurements

Materials:

- One bought tulle skirt with several layers
- Black tulle – amount depends on skirt circumference (see 'Cutting out')
- Black lace tape – amount depends on skirt circumference (see 'Cutting out')
- BERNINA 3 Series

Cutting out:

Seam allowances of 1 cm are already included.

Measure hem circumference of bottom skirt panel = final hem circumference.

Measure height of bottom skirt panel and add 3 cm to it = final height.

From the black tulle, cut out and sew together enough strips in the final height to yield the final length.

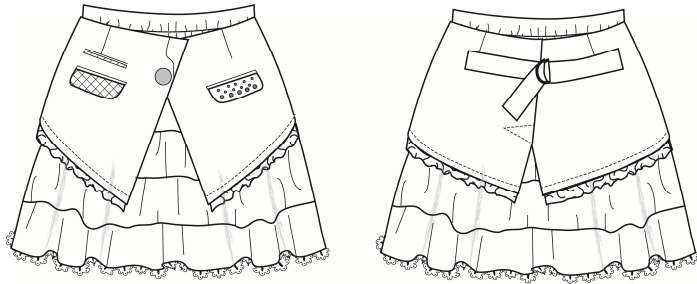
Instructions:

Sew tulle strips:

1. Sew together all tulle strips at the short edge and close into a ring.
2. Sew lace tape onto bottom edge of tulle.
3. Topstitch the top edge of the tulle with a maximum stitch length. Begin again approx. every 2 m, taking care not to cut thread too short. Knot off all lower threads together, and pulling evenly at the top thread, gather the tulle ring until the desired circumference is reached.
Sew tulle strip to wrong side of top edge of bottom skirt panel.

Blazer skirt

Size as per your own measurements



Materials:

- One discarded ladies' blazer (we used size 36)
- Elastic, 1 cm wide, in length of waist circumference
- Lace tape
- Remnant of black tulle
- Sew-on rhinestones, black
- 0.55 m satin ribbon, 4 cm wide
- 2 D-rings, 3.5 cm wide
- Coverable button, diameter as per buttonhole size
- BERNINA 3 Series

Instructions:

Prepare blazer for cutting out

1. Fit dressmaker's dummy first with the tulle skirt, then the blazer on top. Close bottom button of blazer and drape bottom of blazer as wished. Indicate side, front, and centre-back with pins. Remove blazer from dummy and spread out flat. Adjust centre-back, waist, and front height. We calculated a height of approx. 32 cm (incl. 4cm seam allowance). Cut blazer apart with 4cm seam allowance at marking. Neaten top edge (= waistband) together with lining.

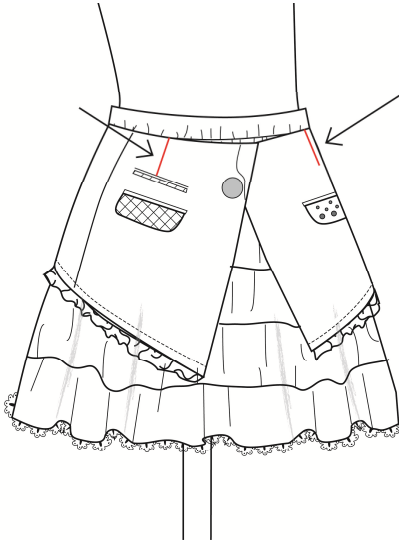
Pocket embellishment

1. Embellish pockets as desired. We covered a pocket flap with tulle, sewed rhinestones to the opposite flap and lace tape onto the welted pocket.

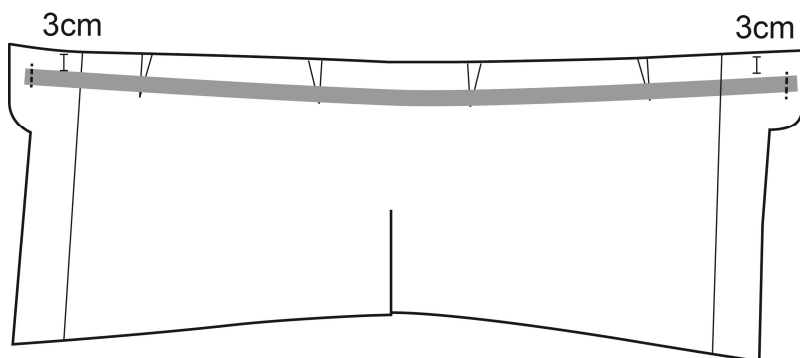


Adjust waist

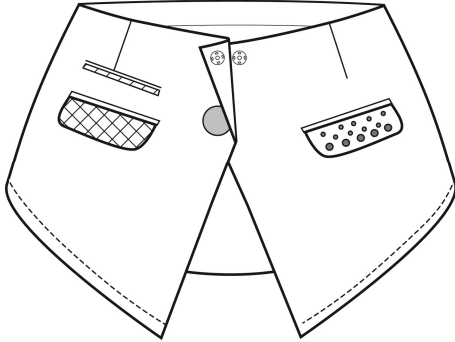
1. Drape blazer on dummy over tulle skirt and pin two darts in waist at both front and back. Sew darts.



2. Topstitch darts in a contrasting colour with a triple straight stitch.
3. If the back slit opening on the blazer is too wide, topstitch it sideways with a contrasting colour.
4. Measure your own waist circumference and cut out a 1-cm-wide piece of elastic about 2 cm shorter than this measurement. Stitch elastic at both ends 3 cm below waistband edge.



5. Open out left blazer collar towards the centre and use as an underlap. Turn under waistband edge first 1 cm and then 3 cm; press over and sew. Topstitch top edge of waistband approx. 2mm in from the edge also.
6. Cover coverable button in matching fabric and use to replace the existing button.
7. Attach 1 or 2 press studs in the centre-front, depending upon underlap and overlay width.

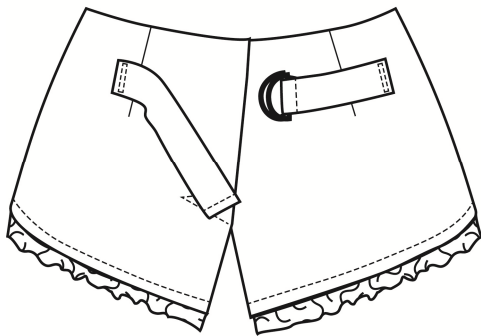


Hem embellishment

1. Baste ruffled lace tape under hem edge and sew on in a contrasting colour with a triple straight stitch.

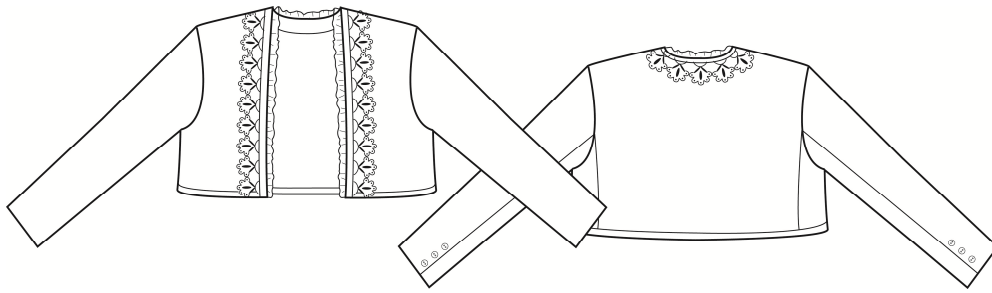
Sew on satin ribbons

1. Sew on satin ribbons about 1/3 behind the side seam. Loop one end through two D-rings and sew in place. Turn other ribbon end under twice and sew.



Blazer bolero

Size as per your own measurements



Materials:

- One discarded ladies' blazer (we used the top of the blazer skirt in size 36)
- Approx. 1.8 m satin bias binding in a matching colour
- Lace tapes and trim in beige and black
- BERNINA 3 Series
- Edgestitch foot no. 10

Instructions:

Bind bolero top

1. We used the top of the already-cut-apart blazer of the skirt section. Put the top on the dressmaker's dummy and adjust the bottom hem edge slightly if need be. Cut off lapel if desired. Neaten outer fabric with lining all around.
2. Sew satin ribbon right sides facing to the bottom hem, turning under beginning and end by about 0.5 cm. stitch. Turn ribbon inwards and baste. Stitch ribbon in the ditch from the right side. Trim top edge and around the neckline in the same manner.

Ruffles

1. Pin ruffled tape from the wrong side around the neckline. Pin lace tape on the right side in such a way that both tapes can be sewn on with a zigzag stitch in a single operation.