

inspiration

SEWING, EMBROIDERING
AND OVERLOCKING

No. 69 Autumn 2017
www.bernina.com

SWITZERLAND CHF 6.90
EUROPE € 4.60
UNITED STATES \$ 6.95
INCL. VAT
ISSN 1664-5987

Urban Styling

Jeans Dress

Opposites Attract

Cosy Time

Mandala Look

PATTERNS AND
INSTRUCTIONS FOR
FASHION AND HOME
ACCESSORIES



made to create **BERNINA**



8

Fashion

- 6 **Rich Colours – Bold Design**
Cosy coat with comfortable dress in this winter's "in" colours
- 8 **Urban Styling**
Fashion combos in a mix of styles
- 10 **Opposites Attract**
Wraparound skirt with eye-catching shirt and stylish bag
- 12 **Late Bloomers**
Retro-look jeans dress with lavish embroidery
- 14 **Festive**
Treat yourself to this simple leather-look jacket and elegant blouse with festive sparkle



14



22

News and Notes

- 16 **BERNINA News**
The new L 460 and L 450 overlockers
- 21 **BERNINA Notes**
News from the Creative Center in Steckborn

Tips for Sewing, Embroidering and Overlocking

- 17 **BERNINA Software 8: Relief embroidery tips and tricks**
- 18 **Inserting a zip between outer fabric and facing**
- 20 **The right interfacing for your new favourite bag**

i-Tips

You'll find further detailed photos for 6917 Bag at www.bernina.com/inspiration-6917



Children

- 22 The Magic Unicorn and the Enchanted Cloud**
Adorable pyjamas, cloud mobile and pennant for our little ones

Living and Lifestyle

- 24 Wintertime is Cosy Time**
Woolly relief embroidery on pillows, pictures and magazine caddies instantly creates a comfortable feelgood atmosphere
- 26 Circular Logic**
All sorts of circles embellish roller blind, placemat and décor
- 28 Mandala Look**
Living accessories for the guest bathroom
- 30 A Red and White Christmas**
Christmas decorations in the popular cross-stitch look, CutWork Christmas-tree baubles, and jolly nutcracker apron

Guest Spot

- 32** Andrea Müller, Textile Designer

Young Look

- 34 Colourful Patches**
Badges or patches to instantly jazz up your jackets, jeans, bags, and even shoes

Readers' Service

- 35** Our gift for you
Masthead

FASHION



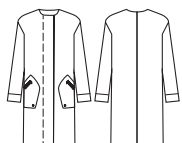
Made with Walking foot 50



Rich Colours –

Bold Design

Deep, rich colours are currently all the rage, with dark shades of red – as in our coat – at the forefront. Teamed with these bold styles, they create a trendy look.



6910 Coat

The fluffy fullered merino wool will take the chill off of those first cold days. This collarless model is perfect for teaming with a cosy scarf.



6911 Dress

Trendy zips combined with a mix of materials are exciting details of this cosy dress. You'll find help for inserting the zips on the Tips pages.



FASHION



Festive

Winter is full of festivals and seasonal entertainment – St. Nicholas' Day, Christmas, New Year's Eve, the panto and theatre, to name but a few. In a festive blouse and matching jacket, you'll cut a dash at any event!



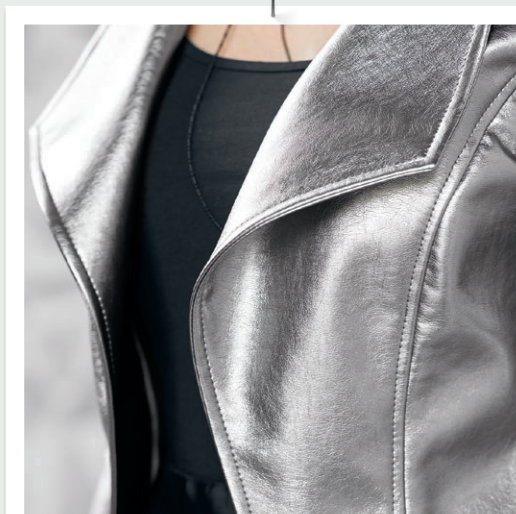
6925 Blouse

The delicate lightweight material with its silver sheen makes this blouse ideal festive wear. The luxurious capaciousness and "wraparound" look will skilfully flatter any figure.



6926 Jacket

With its silver sheen, the supple faux leather creates a highly festive impact all on its own. The style with the deep stand-up collar reinforces this impression further, and sets off the blouse to best advantage.



Jacket made with
Walking foot 50

CHILDREN





The Magic Unicorn and the Enchanted Cloud

There's no escaping the unicorn trend at the moment – the mythical creatures are available as cuddly toys, and decorate slippers, chocolate boxes and cosmetics packaging, among much else. We followed the unicorn hoofprints through the enchanted forest, and found...

6930 Pyjama top

The "Nicky" fabric makes the top super fluffy, and with the neckline variant there's no tug-of-war when putting it on. The cloud with the rainbow is appliquéd, and the neckline is hemmed with the binder foot.

6931 Pyjama bottoms

Sweet dreams of candy floss and glitter dust are a given when wearing these! The round patch pockets are stitched together, turned and sewn on, and the trousers are constructed in the twinkling of an eye. The elastic in the waistband can be adjusted for individual comfort.

6932 Mobile

Heavenly dreams await with this cloud mobile! The rainbow is made with the Embroidery Software 8; the star, heart and droplet elements are created from felt with the Design-Works software and cut out with the CutWork Tool. Just add assorted ribbons and padding, and your enchanted cloud is finished!

6933 Pennant

The unicorn is appliquéd, and the metallic thread and "Hot Spots" crystals are embellishments to make a little girl's dreams come true. The assorted tapes and beads are then simply tied onto the right and left of the wooden dowel.



Made with:

- Binder attachment 88 for unfolded bias tape
- Binder foot 95



LIVING



Circular Logic

The circles on the roller blind, placemat and lantern are created in very different ways, but together yield a harmonious whole, in currently trendy shades of green. All enthusiastic hobby sewists should find something to tickle their fancy here!

6945 Roller blind

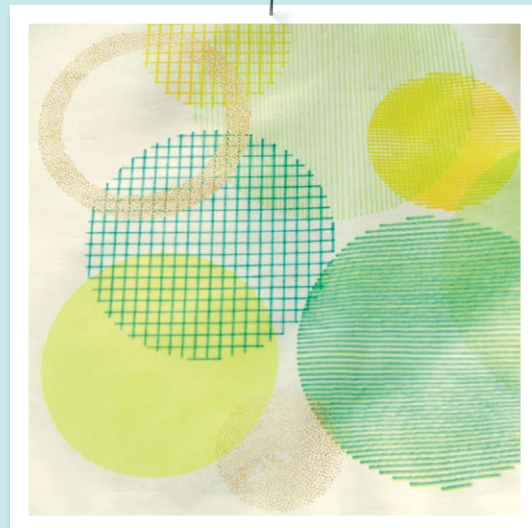
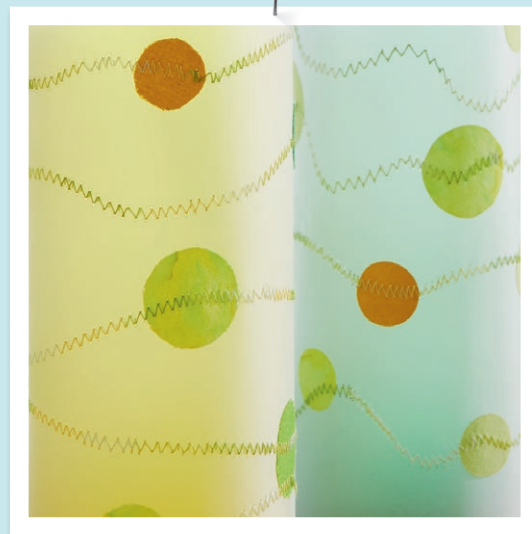
The embroidered motifs were created with the Embroidery Software 8 features. The thread of the spiral was embroidered with relief embroidery, and the morphing effect distorts straight lines into wavy ones. The roller blind can either be attached with hook tape or to a pole, depending on your particular window treatment.

6946 Placemat

Here, the circles were machine-painted-on in various ways with the DesignWorks software and the PaintWork Tool. Once they've been fixed, the textile colours are of course washable. Sewn with the binder attachment, the edge creates an attractive frame for the placemat.

6947 Vase cover

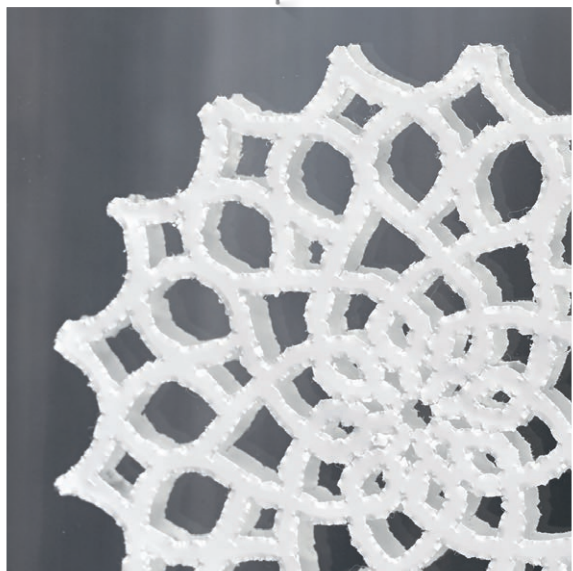
Tracing paper and a few fabric remnants produce a pretty decoration in no time flat. The BSR Foot is then used to free-motion embroider back and forth over the circles and paper.



Made with:

- BERNINA Embroidery Software 8
- DesignWorks/PaintWork
- BSR
- Binder attachment 88 for unfolded bias tape





Mandala Look

Surprise your guests with a beautifully accessorised loo! These projects add an instant dash of homeliness to the smallest room in the house.

6940 Guest towels

This pretty mandala lends a posh touch to any towel with very little effort.

Tip: The BERNINA Embroidery Software makes it a cinch to create your own mandalas. Simply digitise one-eighth of the design – the Wreath Tool lets you complete the remaining seven-eighths with two further clicks.

6941 Felt basket

Neatly stowed in this basket, the towels are set off to even better advantage. The collapsible felt basket is lined on the inside with a glazed cotton fabric, so it can also be used for discarded (wet) towels.

6942 Soap-dispenser cover

Purchased dispensers make a big splash with a cover. The mandala with straightstitching was specially adapted for the paperlike material. And relax – like SnapPap, Kulörtexx can also go in the washing machine!

6943 Mirror sticker

Stickers lend that finishing touch to the new guest-bathroom furnishings. With the CutWork Tool, you can also cut them from commercially available adhesive film. The four knife positions give the mandalas something of a “vintage” look.



Mirror sticker made with::
– CutWork Tool and
– Echo-quilting and CutWork foot 44C

Embroideries with:
BERNINA Embroidery Software 8

