

inspiration

Inspiration Special 2016
www.bernina.com

SWITZERLAND CHF 5.90
EUROPE € 3.70
UNITED STATES \$6.00
INCL. VAT
ISSN 1664-5987

SPECIAL: FASHION BASICS

SEWING, EMBROIDERING
AND OVERLOCKING

"Fifties" look

Get shirty!

Fringe benefits

Waterfall dress

Leisure look

CUTTING AND
SEWING INSTRUCTIONS
FOR FASHION
AND ACCESSORIES



made to create

BERNINA



Timeless

- 6 "Fifties" look, revisited
Circle skirt with top and bowling bag
- 8 Get shirty!
Long- or short-sleeved – the choice is yours

Fringe benefits

- 10 Fringe fever
Blouse shirt, long skirt, fringed waistcoat and fringed clutch
- 14 Summer outfit
Shorts and fringed top with colourful hobo bag

Tips

- 12 Tips for creating the basic patterns

Dresses

- 16 Two-tone
A-line or wraparound look?
Comfortable dresses for everyday wear
- 18 A touch of class
Dress with waterfall neckline and long knit jacket

Leisure

- 20 Leisure look
Sweatshirt with classy print, comfortable "jogger look" trousers and cuddly soft-jersey backpack



Baby

22 Baby

Ready for a walk with jacket, grow-along trousers and reversible cap

i-Tips

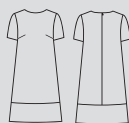
You'll find additional detailed pictures for construction of the backpack on page 20 at www.bernina.com/inspiration-S1242

Readers' service

24 Our gift for you
Masthead

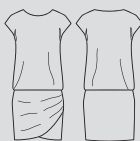
Two-tone

How would you prefer your dress – graphic and simple, or playful and shirred? We couldn't decide, and have left the tough choice to you. Either way, both dresses are genuine eyecatchers.



S1230 Dress

This A-line model is a genuine basic pattern that comes into its own with or without a hem facing and in a variety of fabrics. The pattern can be downloaded from our website.



S1231 Draped dress

The soft, cuddly cotton-jersey mix is especially suitable for this pattern. The pink skirt section really makes the grey shine. Variations on the pattern can be found below in the Tips.

Tips:

Sew dress 1230 without a hem facing and wear a belt with it.

Sew draped dress 1231 with a round front seam-edge, but without side shirring. For this, cut out the left-front skirt section twice. Or as a really simple alternative, cut out with a straight skirt, i.e. cut out the front skirt section like the back skirt section. You could even cut out the skirt as one piece with the top section, and sew it with or without elastication. Wear it with a narrow belt.

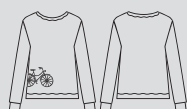


LEISURE



Leisure look

No doubt about it, this look has long since made its way out of the gym and onto the street. Classy sweatshirts and casual joggers are now fancy enough to go out in.



S1240 Sweatshirt

Metallic thread and a fabric strip sewn on with a decorative stitch lend a fashionable touch to this sweatshirt. The cycle on the front was applied with CutWork and Hot Spots (Vilene) in combination with silver film.



S1241 Trousers

The shiny material imparts a touch of elegance to these casual joggers, which is further emphasised by the tape on the side seam. In-seam pockets make the joggers suitable for everyday wear.



S1242 Backpack

Using soft jersey to construct a backpack was previously inconceivable, but nowadays is not a problem thanks to interfacings such as batting, or somewhat more recently, "Style Vil". Here too, a bicycle – this time made from crystals – adds the crowning touch.

Sweatshirt:
With CutWork Tool

Backpack:
With CrystalWork Tool



Baby

The fully matching look is sheer perfection! For a simpler variant, the individual garments in patterned fabrics can easily be combined with solid-coloured items. Girl's and boy's variants differ only in terms of the choice of colours. The ability to roll the waistband on the jacket and trousers and the cuff on the cap up or down means that these garments will fit for more than just a season!



S1250 Jacket

The hooded jacket made of cuddly cotton "Nicky" fabric and its printed jersey lining keep baby warm all over. The jolly owl perches on a branch made of sewn-on ribbon yarn.



S1251 Cap

The cap is reversible, so you can combine patterns and/or colours as it takes your fancy. Depending on head size, it can also be worn without a cuff.



S1252 Trousers

The wide waistband at the tummy and cuffs at the ankle make these trousers a real "grow along" model. Both can be rolled up whilst the baby is still small, and left unrolled later on. The appliquéd flower on the bottom of the pants is a sweet little eyecatcher.



S1253 Shirt

The owl walks the tightrope – a piece of sewn-on ribbon yarn – in order to highlight the join seam. The bottom section was perfectly gathered with the gathering foot. Add fringe – cut precisely with a rotary cutter – to give your little one a totally on-trend look!

Shirt:
With Gathering foot no. 16,
Cording foot no. 22



