

Installation manual EConPC Update

Note:

The instructions take you step-by-step through the installation of EConPC Rel3.1 on a computer with a Windows® XP / Windows Vista™ or Windows® 7 operating system. These instructions are also valid for further EConPC program updates – hence, the file names and illustrations used may be different, depending on the update and the installed operating system. In this installation manual, illustrations from Windows Vista™ are used.

Installation Requirements

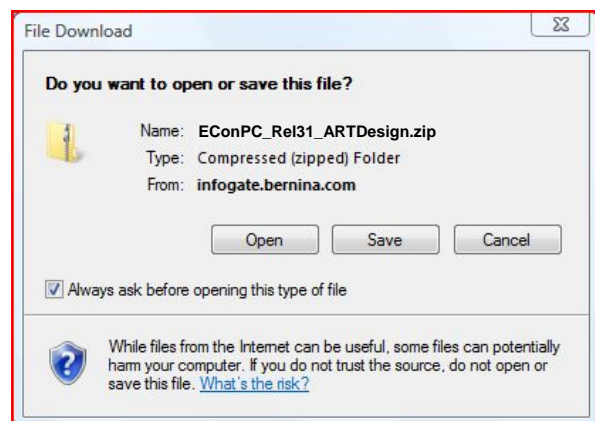
- An operating BERNINA embroidery software ARTDesign V1.0G¹ installed on your Computer.
- All programs are closed.
- Administrator rights for your computer.
- Safety warnings during installation are confirmed with **“Execute”** or **“Continue”**.

Step 1:

To start the download process, click on the link:  [EConPC_Rel31_ARTDesign.zip \(7'997KB\)](#)

Step 2:

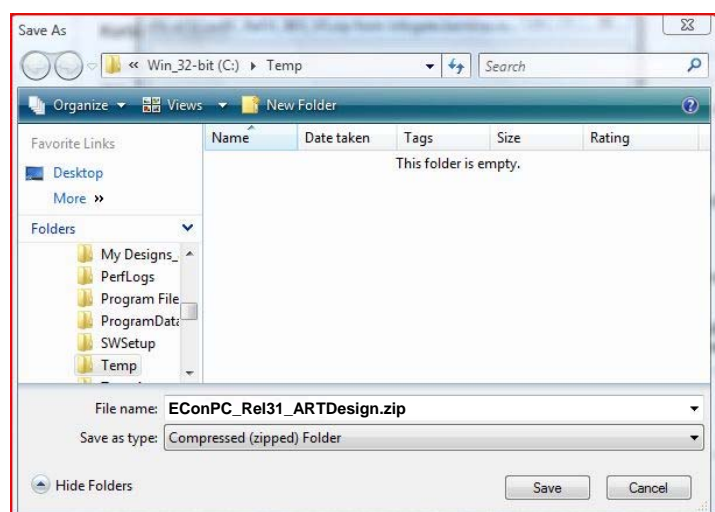
A dialog window will open:
Click on **“Save”**



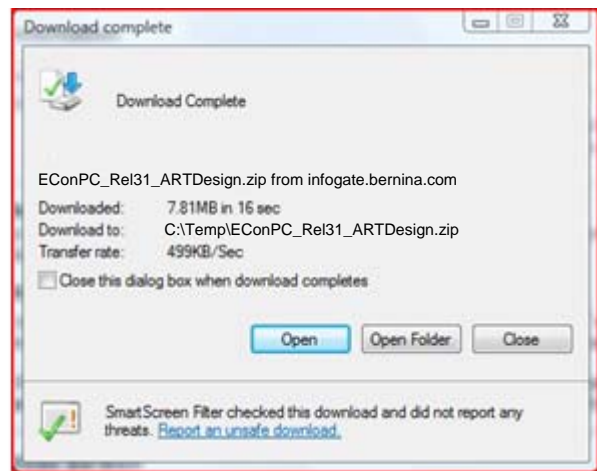
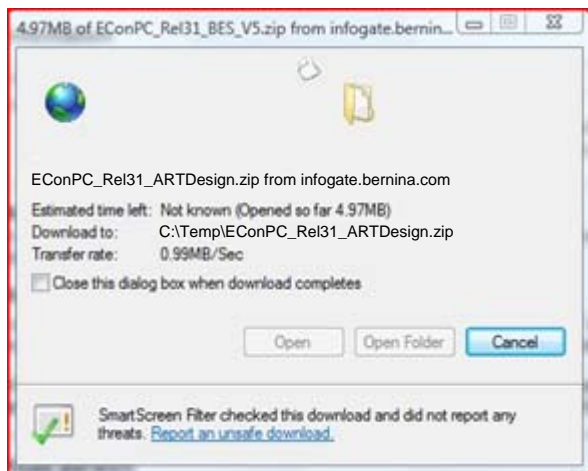
Step 3:

A **“Save as”** window will open.
Select a path on your local PC
(**example: C:/Temp**).

Click on **“Save”** to download the ZIP file onto your computer.



¹ With BERNINA Embroidery Software ARTDesign V1's installed Service Pack 1.



Unselect "**Close this dialog box when download completes**" and click on "**Open**".

Step 4:

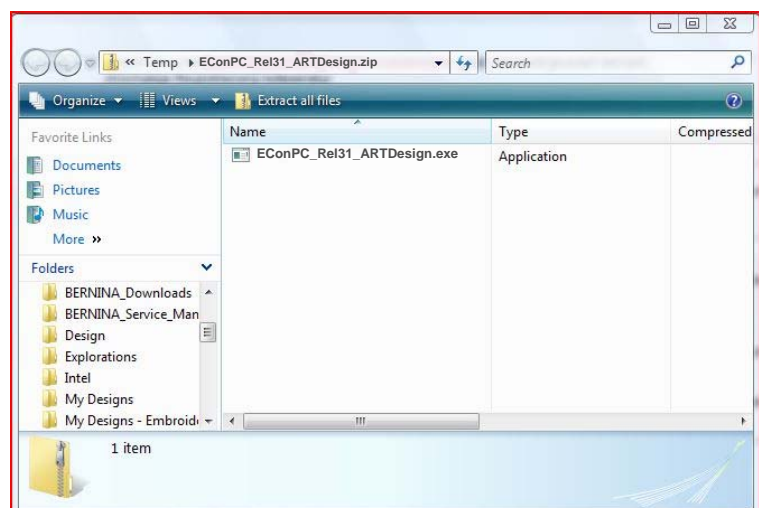
When the security message is displayed, click on "**Allow**".



Step 5:

To start the installation, click on the file:

EConPC_Rel31_ARTDesign .exe.

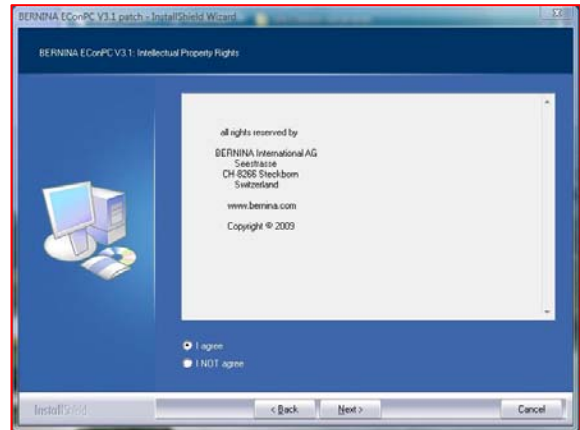
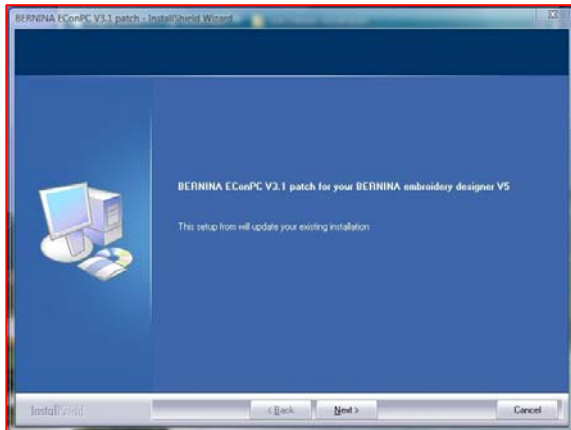


Step 6:

Depending on the setting and version of your Windows® operating system, a security message is displayed. To continue with the installation, click on the "**Continue**" or "**Execute**" button.

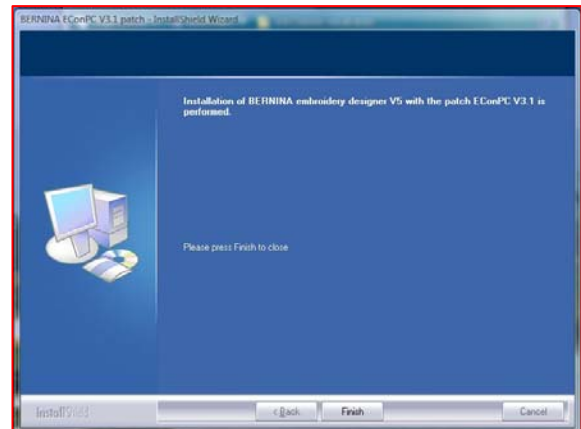
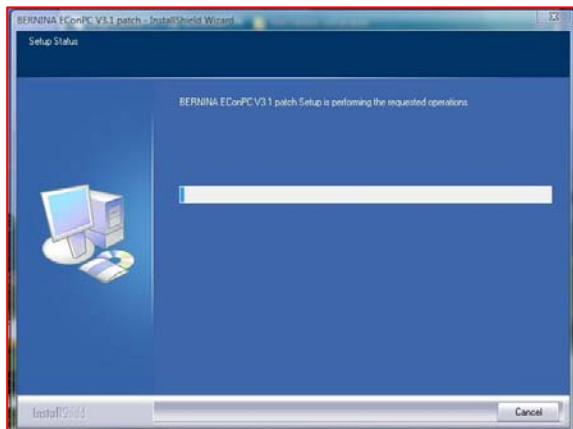
Step 7:

Select "**Next >**" to carry on with the installation. Follow the instructions on your screen.



Step 8:

Click on "**Finish**" to complete the installation of EConPC Rel31.



Step 9:

Close all open program windows and start up your BERNINA Embroidery Software ARTDesign V1. Open an embroidery motif and send it to the connected, switched-on aurora sewing machine, so that EConPC V3.1 starts up.

