

BERNINA
8 Series

Fit for a Princess Headboard Slip Cover

Created by Jeanne Delpit

Turn a plain canvas fabric into a work of art. Using the BERNINA 830 as your design partner, create an adorable, reversible slipcover for a headboard featuring embroidery from the BERNINA Exclusive Design Collection - Lilified.

Incorporate BERNINA CutWork for appliqué and BERNINA Embroidery Software 6 for design layout made easy. Learn tips for Multi-hooping, freemotion stitching and BERNINA Dual Feed.

Your special princess will be sure to have enchanted dreams sleeping under a unique headboard designed just for her!



Supplies

Machine & Accessories

- BERNINA 830 Sewing & Embroidery Machine
- Large Oval Hoop
- Jumbo Hoop & Template
- Reverse Pattern Foot #1D
- Overlock Foot #2A
- Edgestitch Foot #10D
- Open Embroidery Foot #20D
- BERNINA Stitch Regulator #42
- Echo Quilting & CutWork Foot #44C
- Ruffler Foot #86
- Binder Attachment #88 (28mm) with Binder Foot 95C
- CutWork Tool
- BERNINA Embroidery Software 6

Embroidery Design Collection

BERNINA Exclusive Embroidery Collection - Lilified #82003

Threads

- Isacord Thread to coordinate
- Mettler 60 wt cotton thread or Embroidery Bobbin thread

Fabric & Notions

- Medium weight canvas or denim for embroidered headboard front - enough to cover desired size headboard
- Cotton print for reversible back - enough to cover size of embroidered front
- 1 ¼ yard cotton fabric for flower stems
- 1 - 1 ½ yard contrast print for ruffle
- 4 to 5 - ½ yard cuts of cotton in prints and solids for CutWork letters and flowers
- Batting or foam to pad existing headboard base
- OESD Ultra Clean & Tear Stabilizer
- OESD HydroStick Stabilizer
- OESD Appliqué Fix & Fuse or Steam A Seam 2
- Microtex Needles - #90
- Organ Sharp Embroidery Needles - #90
- 6.0mm Twin Needle
- 505 Temporary Spray Adhesive
- Best Press Starch Alternative
- Water soluble Marking Pen or Pencil

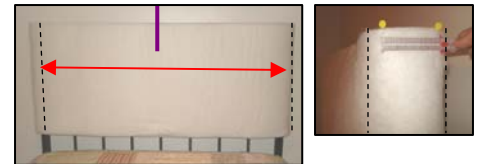
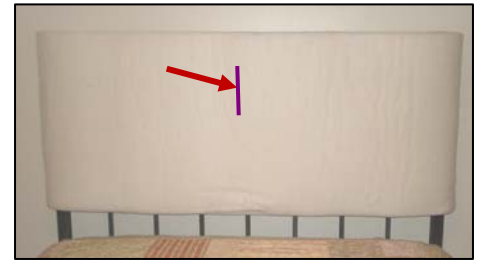
Visit bernina.com

Projects • Webinars • Promotions

Headboard Preparation

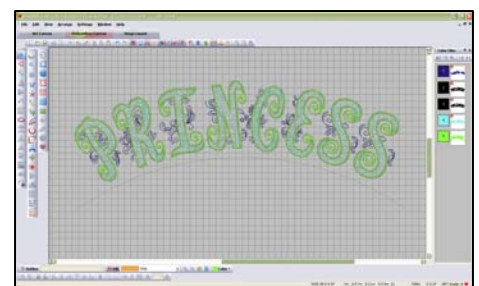
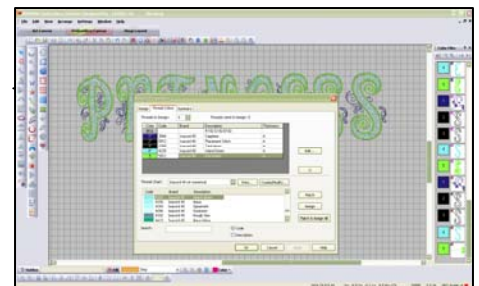
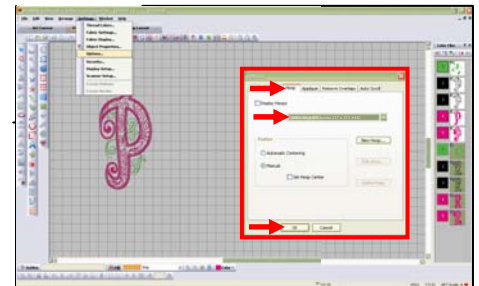
Note: The instructions in this handout will provide the steps to create the double bed headboard slipcover shown. Modifications will be necessary to create different sizes.

- Pad the existing headboard with batting or foam. Nu Foam Soft'n'Crafty foam was used to create the sample shown.
- Hand-stitch foam ends together to secure.
- Mark the center at the top edge of the foam
- To determine the cutting dimensions for the width of the slipcover, first measure across the front foam piece.
- Next, measure the depth of one side and add 1" (for 1/2" seam allowances).
- Add the above two measurements together for the **finished width** of the slipcover (for both the front and back pieces).
- To determine the cutting dimensions for the length of the slipcover, first measure down the front to the desired length.
- Next, measure the depth across the top; add 1" and divide by 2 (this measurement will compensate for seam allowances).
- Add the above two measurements together for the **finished length** of the slipcover (both front and back pieces).



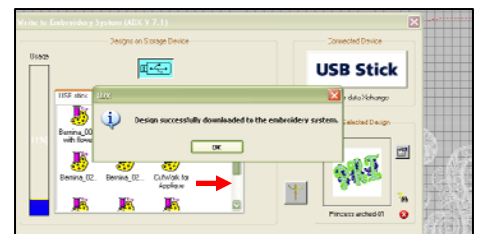
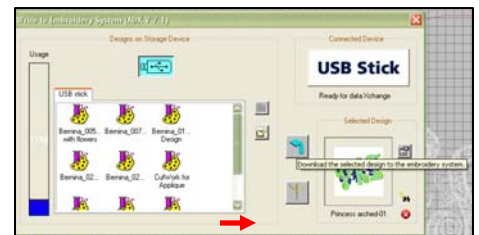
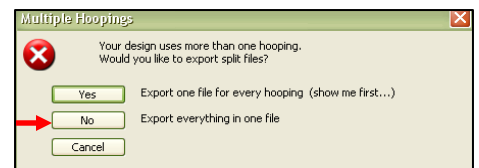
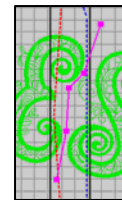
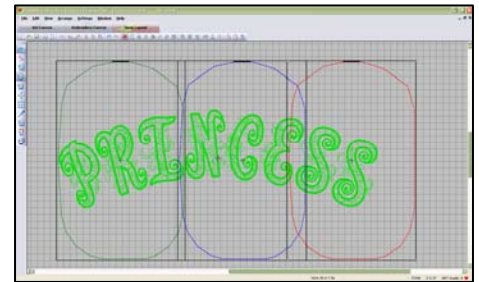
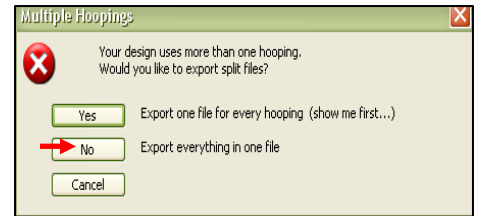
Embroidered Lettering Preparation

- Insert the BERNINA Exclusive Design Collection Lilified #82003 USB stick into the computer
- Open the BERNINA Embroidery Software 6 DesignerPlus or EditorPlus (DesignerPlus was used in the project)
- Select File > Open and locate the Lilified designs
- Select the first letter of the word; click Open
- Turn off Show Hoop
- Make sure the Grid is turned on
- Zoom out far enough to allow a large workspace to add lettering
- Move the first letter to the left
- Select Settings > Options > Hoop tab; activate Manual as the Position and select BERNINA 830 Jumbo Hoop #44C
- Using File > Insert Design, continue adding and moving the new letters to the right, building the word to be embroidered
- If a change of thread colors is desired, select the Color Bar and choose Thread colors...
- Select, assign and apply the new color choices
- Click OK when satisfied
- Select the entire word
- From Color Film, select Sequence By Color; click OK when dialog box appears
- Select the Open Object Tool and create an arc on the screen below the word; use the grid to keep the start and end points of the arc on the same horizontal alignment
- Using the arc as a guideline, position the letters of the word to create a pleasing arrangement; rotate the letters as necessary



- When satisfied with the placement, select the arced line and touch Delete on your keyboard
- Select File > Save As
- Select the folder in which you wish to save the file; you may want to create a new folder in your computer for your slipcover project
- Name the file something easy to remember such as "lettering arced"
- Leave the File Type as (*ART60)
- Click Save
- In the Dialog box, select No Export everything in one file
- Select the Hoop Layout tab
- Move the Default Hoop position to the left to cover the letters
- Select Add Hoop Right; move the new hoop into position to cover the mid-section of the lettering, keeping the hoop placement on the same horizontal plane as the first hoop
- Select Add Hoop Right again, moving the hoop into position to cover the remaining letters
- All letters should be green to show complete embroidery coverage during the stitching; if not, reposition the hoops in order to achieve all letters green; if necessary, add another hoop
- Make sure all hoops are on the same horizontal plane
- If any lettering seems to fall in two hoops, select the Splitting Guide and enter a line to separate what is to be contained within the specified hoop
- Select the Embroidery Canvas tab and activate Show Hoop
- Select File > Save As
- Save to the same created folder in the computer
- Change the file name to "lettering arced split" or something to indicate these are the split files
- Save the File Type as BERNINA USB Stick (*EXP)
- In the Dialog box, select Yes Export one file for every hooping...
- Click on Save All
- In Embroidery Canvas, select Write to Machine
- With the first hooping selected, click on Send Now
- Select USB Stick for BERNINA 830
- Insert a BERNINA USB stick into your computer
- Locate the USB Stick location and click on OK to confirm
- When the Dialog box appears, click on the arrow to download the design to the USB stick
- Confirmation will indicate the successful download of the design to the USB Stick; click on OK
- Select the second hooping and click on Send Now
- Follow the same steps to send the second hooping to the USB stick
- Select the third hooping and click on Send Now
- Follow the same steps to send the third hooping to the USB stick
- Close the Hooping Sequence screen
- Select File > Print Preview
- Select Options; make sure Actual Size is active
- Select Landscape View
- Select Print Now
- Overlap the printed pages to create the word and tape together

Hoop Layout



- On the template, mark the center of each hooping with a line down the horizontal and across the vertical
- On the template, mark the vertical center line of the word
- Position the template onto the front of the headboard foam
- Using pins or tape, secure the word in place when satisfied with the position; use the marked center lines on the foam and the template to assist in alignment
- Measure from the top edge of the foam (no depth included) to the top edge of the lettering and add 2"; write the measurement down to use for positioning on the fabric
- Remove the template from the foam
- Using a sharp knife, make a cut on the template at the center point cross-hairs about 1" crosswise and lengthwise; fold only 2 opposing paper corners back see through the template

Creating CutWork Letters

- Open a new design in your Embroidery Software 6
- Select File > Open and locate the Lilified designs
- Open the File Type as Melco (*EXP) to locate the CutWork files
- Select the first CutWork letter of the word; click Open
- A Warning will appear indicating design limitations
- Click OK as no changes in size will be made

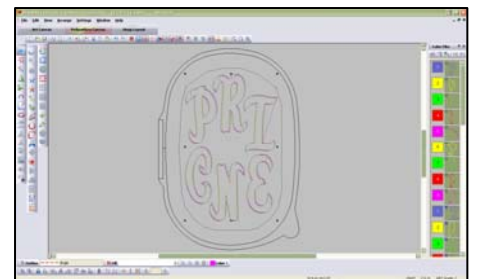
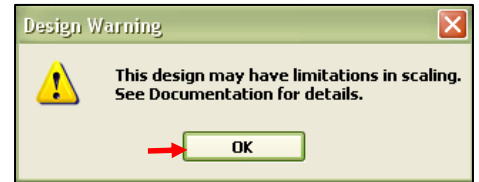
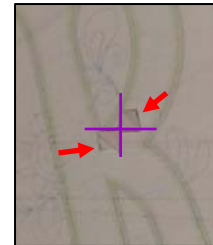
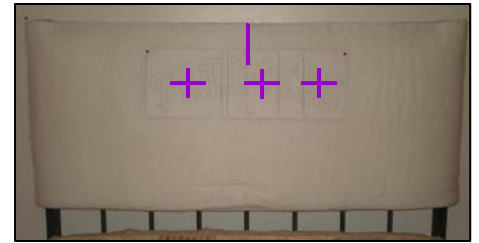
Note: This warning will appear when you insert each additional CutWork letter. Click OK each time.

- Activate Show Hoop
- Turn off Grid
- Zoom out
- Select Settings > Options > Hoop tab; activate Manual as the Position and select BERNINA 830 Jumbo Hoop #44C
- Using File > Insert Design, continue inserting the remaining CutWork letters or as many more as will fit in the Jumbo Hoop

- Select the entire word
- From Color Film, select Sequence By Color
- When the dialog box appears take note of the final resequenced cuts; it may be necessary to select and move the cuts to resequence them completely together
- Once all cuts have been moved together, confirm with OK

- Select Write to Machine
- Select USB Stick for BERNINA 830
- Confirm with OK
- Locate the BERNINA USB Stick location on your computer and click OK
- When the Dialog box appears, click on the arrow to download the design to the USB stick
- Confirmation will indicate the successful download of the design to the USB Stick; click OK

- Remove the BERNINA USB stick and the Lilified Collection USB stick from your computer
- Insert both sticks into your B 830



- Cut a piece of fabric for your appliques large enough to cover one Jumbo Hooping and two Large Oval hoopings
 - Apply a fusible appliqué product to the wrong side of your fabric
- Note: Steam-a-Seam 2 was used in the project.*
- Hoop one layer of HydroStick stabilizer in the Jumbo Hoop
 - Spray the stabilizer with a temporary spray adhesive
 - Cut a piece of the prepared fabric large enough to cover the Jumbo Hoop
 - Place the prepared fabric over the Jumbo Hoop so the basting stitches will be stitched in the fabric; finger press it in place onto the sticky stabilizer
 - Lightly spray temporary spray adhesive on the right side of placed fabric
 - Cut another piece of HydroStick to cover the Jumbo Hoop and finger press it in place over the sprayed fabric



- Select the Embroidery Mode of your B 830
- Insert a bobbin wound with bobbin thread and thread the bobbin basket for embroidery tension
- Insert an Organ Sharp Embroidery #90 needle
- Attach Echo Quilting & CutWork Foot #44C
- Attach the CutWork throat plate
- Thread the machine with any color Isacord



- From the USB icon, select the location of the BERNINA USB stick



- Open it and select the combined CutWork letters



- Select Presser Foot #44C



- Touch Check



- Attach the hoop



- Engage Baste Around Motif

- Select Color Resequenece to combine the cuts that might not have resequenced in the software

- Touch the green Start/Stop button; embroider Colors 1 & 2

- At Color 3 remove the upper thread and needle

- Insert the CutWork tool and turn the blade to Cut 1

- Create all of the cuts, turning the cutting blade position as prompted by the machine



- Select Single Motif when done



- Remove the hoop from the machine
- Remove the fabric from the hoop and gently press the appliqué letters free from the base fabric
- Remove the HydroStick from the top and bottom and set the letters aside for now

- The Jumbo Hoop didn't have room for all 8 letters so the last letters must be cut separately

- Prepare a Large Oval Hoop with HydroStick and spray the stabilizer with temporary spray adhesive

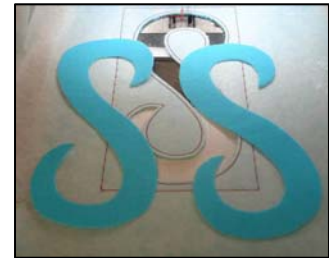
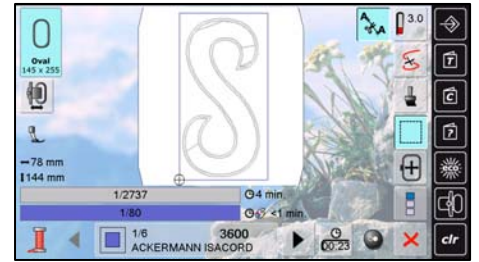
- Cut the remaining prepared appliqué fabric large enough to place two layers on top of the Large Oval Hoop; with duplicate letters just cut two layers at the same time

- Adhere a top layer of HydroStick over the fabric





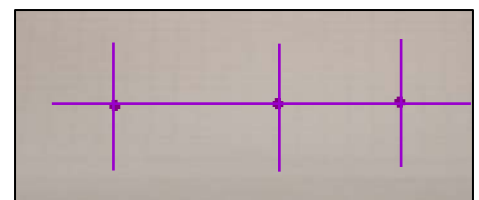
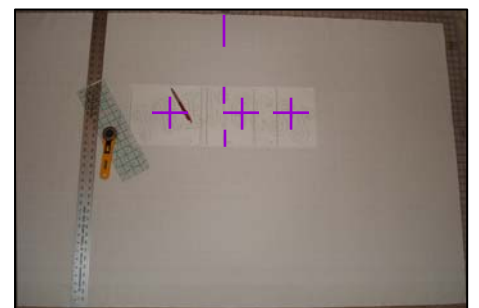
- Insert the Organ Sharp Embroidery #90 needle and thread with any color Isacord
- Select New Motif
- Locate the Lilified USB stick and select the S
- Select Presser Foot #44C
- Touch Check
- Attach the Large Oval Hoop
- Select Baste Around Motif
- Begin the embroidery and follow the color prompts
- Stop at Color 3 and insert the CutWork tool
- Turn the blade position back to Cut 1
- Complete the cuts
- Select Single Motif when complete
- Remove the hoop from the machine; remove the fabric from the hoop
- Gently remove the cut letters from the base fabric
- Remove the HydroStick from the top and bottom and set the letters aside



Slipcover Front Fabric Preparation

Note: The Lili-fied fabric collection from Benartex was used in the project.

- Prewash your fabrics if desired; press with Best Press Starch Alternative
- Place the canvas fabric for embroidery right side up on a large cutting mat; position the fabric as straight as possible
- Tip: Use the selvage edge of the fabric as the bottom finished edge of the slipcover for easier handling and identification.*
- Using a ruler and marking pen or pencil, mark a rectangle the exact finished length and width from the written down measurements of the foam (purple line in picture)
- Mark another rectangle 2" outside of the finished size lines; the extra ease will adjust for pull compensation during embroidery (blue line in picture)
- Cut away the excess fabric on the new marked line; do NOT cut on the finished size lines
- Mark the center at the top of the front fabric
- Mark the location determined on the foam for the placement of the letters
- Position the template onto the slipcover front and tape in place
- Mark the hoop centers directly onto the fabric through the cuts in the template
- Remove the paper template and draw a line to connect the horizontal centers
- Extend a vertical mark 5" above and 5" below each center point on the horizontal line



Embroidering the Letters

Note: All three Jumbo Hoop preparations for the embroidered letters will follow the same steps unless otherwise indicated.

- Prepare a Jumbo Hoop with Ultra Clean & Tear stabilizer
- Mark inside the holes on the hoop Template at the center point and the horizontal and vertical lines
- Marking directly on the stabilizer, connect the dots of the horizontal and vertical marks, crossing at the hoop center
- Spray the stabilizer with temporary spray adhesive
- Tip; The MasterHooper™ makes the task of hooping easier.*
- Roll up the excess fabric of the slipcover front and carefully place it over the sprayed stabilizer in the hoop
- Aligning the markings on the fabric with the markings on the stabilizer, finger press the fabric to the stabilizer to set in place
- Leave prepared hoop as is for now

- Insert an Organ Sharp Embroidery #90 needle
- Attach Echo Quilting and CutWork Foot #44C
- Thread the machine with the first color of embroidery thread for the letters



- Open the first multi-hooped letter set from the BERNINA USB stick



- Attached the prepared Jumbo Hoop; use binder clips to hold the excess bulk of the fabric out of the way



- Select Presser Foot #44C

- Select Design Center so the needle will travel to the exact center of the motif on the machine screen

- Handwalk the needle down into the fabric to see if the hooped fabric marked center is in the same location as the machine screen center



- If the needle doesn't align with the center markings on the hooped fabric, select Move Motif

- Turn the Stitch Width and/or the Stitch Length Multifunction knobs to move the machine center (the needle position) into place aligning it exactly with the center mark on the fabric



- Touch Check



- Engage Baste Around Motif

- Begin the embroidery, changing thread colors as indicated
- When stitching Color 3, the placement lines, choose the color thread that best suits the fabric for the appliqué pieces

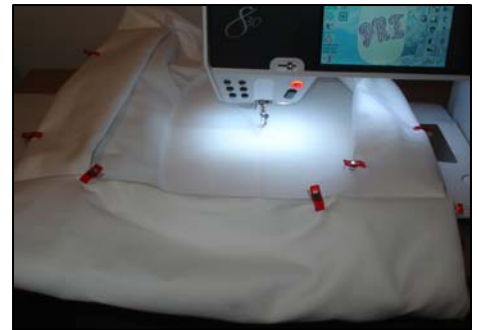
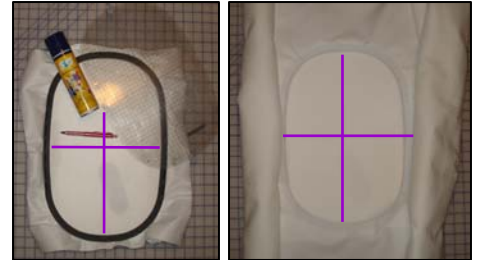
- At Color 4 remove the hoop from the machine
- Score the protective paper backing on the appliqué letters and peel it away to expose the adhesive

- Position the letters exactly on the stitched placement lines
- Finger press or iron in place using a press cloth and dry iron
- Attach the hoop back onto the machine

- Complete the embroidery process, changing thread colors as prompted



- Select Single Motif when the stitching is complete
- Remove the hoop from the machine and the fabric from the hoop
- Remove the basting stitches and stabilizer
- Press from the wrong side over a towel



- Repeat the exact same process on the previous page to prepare the Jumbo Hoops and embroider the next two sections of the word

Note: Since the Splitting Guide was used to separate the letter "E" into its respective hooping, there will be reference marks that will stitch at the end of the second hooping. You may choose to bypass stitching them as they aren't necessary for alignment. These same reference marks will be in the third hooping as well.

- When all of the embroidery is complete, press the slipcover front from the wrong side over a towel

Plant Some Flower Gardens

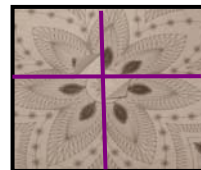
- Insert the Lilified and BERNINA USB sticks into your computer
 - Open a variety of the Lilified Collection floral motifs and print a template for those you would like to use in a floral arrangement
- Tip: In the Color Bar, change all the motif colors to black before printing. It will be easier to see the complete layout of the motif on the paper. Print duplicates if necessary.*

- Lay the inner ring of the Jumbo Hoop in the upper left on the right side of the slipcover, keeping in mind the finished front size
- Trim the floral templates close to the stitching lines
- Mark a T at the top of the template and a B at the bottom
- Mark the center horizontal and vertical lines
- Cut the template 1" at the center lines and fold the opposite corners away from each other
- Arrange the floral motif templates in a pleasing manner being sure to stay within the Jumbo Hoop
- Tape the templates in place

- Cut 15-20 bias strips of fabric at least 20" long to create the flower stems
 - Press the bias strips with Best Press Starch Alternative
- Note: The 28mm Bias Binder size was used for this project. Cut the bias strips a scant 1 1/8" wide.*



- Toggle to the Sewing Mode
- Insert the Microtex #90 needle
- Thread the needle and bobbin with thread to match the stem fabric
- Thread the bobbin basket for sewing tension
- Attach the 9mm throat plate
- Attach Binder Foot #95C
- Select Straight Stitch #1
- Move the needle position 2 to right of center
- Attach the Bias Binder Attachment #88 to the bed of the B 830
- Load the Binder with the bias strips and begin stitching to create the stems
- Since the bias strips are not sewn together, feed one new strip into the binder as the previous strip is stitching through
- When all of the bias strips have been made, clip them apart and press with Best Press Starch Alternative again



- Place the bias strips right side down about 1” apart on a scrap of stabilizer
- Spray one side of the strips with temporary spray adhesive
- Picking up one stem at a time, arrange them in a pleasing manner being sure to tuck the top of the stems under the template to be caught in the appliqué stitching
- Finger press, then pin the stems in place
- Mark the centers of each floral motif through the openings on the templates
- Set the templates aside
- On the opposite side of the slipcover front, position more stems to add a dimensional bud garden (creating the fabric buds will be described in later steps)
- Create an unopened bud at the top of a stem by tucking the bias strip back under itself about 1” down; pin in place

- Remove the Bias Binder Attachment and Binder Foot #95C
- Touch Clear to reset the needle position to the center of the Straight Stitch #1
- Insert the 6.0mm Twin Needle
- Manually thread one needle eye with the existing thread already through the thread path of the machine
- Thread the machine with another spool of the same color thread
- Be sure to activate Manual Threading so the Automatic Needle Threader does not swing when you touch the illuminated button on the head frame

- Manually thread the second needle eye
- Attach Open Embroidery Foot #20D
- Engage BERNINA Dual Feed
- In the Security Program, activate the 6.0 Twin Needle and the 9mm throat plate
- Touch Check



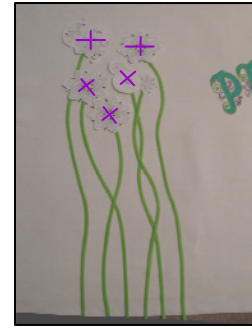
- Align the toes of the presser foot on the outside the bias strip
- Decrease the motor speed and slowly stitch all of the stems in place

Tip: Try to align one of the needles into the previous stitching that created the bias strips.

- A wooden skewer can assist in keeping the stems in place
- Lay the slipcover front back onto a large surface

Creating the Flowers for the Embroidery Garden

- Apply the appliqué adhesive product to the wrong side of the fabrics to be cut for the flower garden embroidery (5 layers were cut in this project)
- Hoop one layer of HydroStick in the Jumbo Hoop
- Spray the stabilizer with temporary spray adhesive
- Place the first fabric layer on the stabilizer
- Lightly spray the top of the first fabric layer
- Place the next layer of fabric to be cut
- Repeat the spraying and layering process until all fabrics to be cut are in place
- Place one last layer of HydroStick on top; spray to keep in place



- Insert the Organ Sharp Embroidery #90 needle
- Attach the Echo Quilting and CutWork Foot #44C
- Insert the embroidery bobbin and thread the bobbin basket for embroidery tension
- Attach the CutWork throat plate
- Thread the machine with any color Isacord



- Toggle to the Embroidery Mode
- From the Lilified Collection USB stick, select one of the CutWork shapes to be used in the embroidery of the flower garden



- Select the Jumbo Hoop
- Select Presser Foot #44C
- Drag and drop the CutWork motif to the upper part of the hoop
- Select Add Motif



- From the Lilified Collection USB stick, continue adding the rest of the CutWork shapes that are to be used until the hoop is full or all of the motifs have been placed; add duplicates if needed
- Retrieve all of the motifs within the hoop



- Touch the Move Motif icon twice to center the grouped motifs
- Touch Check



- Select Baste Around Motif
- Select Color Resequence
- Follow the machine prompts to complete cutting out all of the shapes



- Touch Single Motif when complete
- Remove the hoop from the machine and the fabrics from the hoop



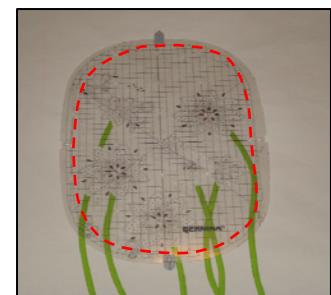
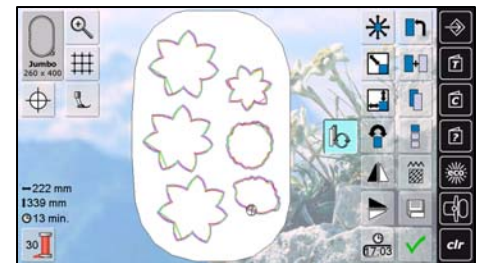
- Gently remove the cut shapes from the base fabrics and set them aside in their respective piles



- Lightly spray the backs of the embroidered flower garden templates with temporary spray adhesive
- Place the templates back into their marked positions on the slipcover front on top of the stitched stems
- Place the Jumbo Hoop template over the motifs, repositioning the flowers if necessary to make sure they all fit within the maximum embroidery field for Foot #44C
- When satisfied with the placement, remark the center, horizontal and vertical placements through the holes on the templates
- Remove the templates and connect the vertical and horizontal marks of each, crossing in the center



- Prepare another Jumbo Hoop with Ultra Clean & Tear as previously done, transferring the center markings
- Roll up the excess slipcover fabric, aligning the markings on the fabric with the markings on the sprayed stabilizer; finger press the fabric in place onto the stabilizer
- Addition which cut fabric colors you wish to use by laying them on top of the templates adhered to the fabric
- Once satisfied, lay the pieces aside
- Attach the Jumbo Hoop to the B 830
- Select New Motif





- From the Lillified Collection USB stick, open the first floral motif to be grown in your garden
- Drag and drop the motif close to the position you created within the hoop



- Activate Design Center
- Handwalk the needle into the template to see if it aligns with the center position; chances are it won't



- If not, activate Move Motif and turn the Stitch Width and/or Stitch Length Multifunction knobs until the motif is in position with the template on the fabric



- Select Add Motif



- Continue adding the remaining flower garden motifs, moving and rotating them into place according to the position of the templates on the fabric



- Retrieve all of the motifs



- Touch the Move Motif icon twice to center the grouped motifs



- Touch Check



- Select Baste Around Motif

- DO NOT select Color Resequence

- Insert the Organ Sharp Embroidery #90 needle
- Thread the machine with the first thread color
- Begin the embroidery, changing the thread colors as desired
- When a CutWork appliqué placement line is stitched, trim the excess stem away inside the stitching line before placing the raw edge appliqué
- Touch Single Motif when complete
- Remove the hoop from the machine and the fabric from the hoop
- Remove the excess stabilizer and gently press the slipcover front on the wrong side over a towel

Creating the Flowers for the Bud Garden

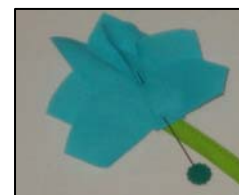
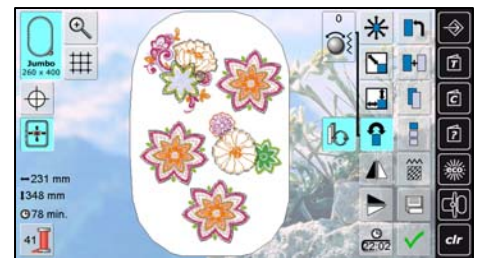
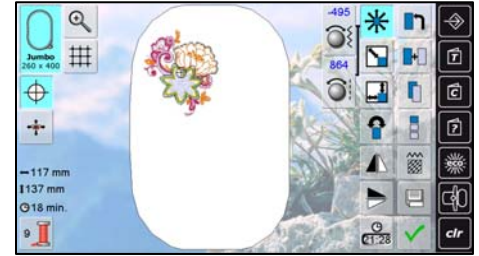
- Cut fabric chosen for the buds large enough to manipulate; the sizes cut for this project were 1" larger than the CutWork shape sizes
- Press the pieces using Best Press Starch Alternative
- Fold one bud piece of fabric in half, RST, and pinch the fabric, folding the outer edges towards the center, to shape a fan
- Pin the shaped bud at the top of the respective stem
- Repeat the shaping for all buds in your garden



- Toggle to the Sewing Mode



- Insert the Microtex #90 needle
- In the Security Program, activate the standard needle and the 9mm throat plate
- Thread the needle with the color to match the stem fabric
- Insert a bobbin the match needle thread and thread bobbin basket for sewing tension
- Attach the BERNINA Stitch Regulator with the echo quilting sole and plug in



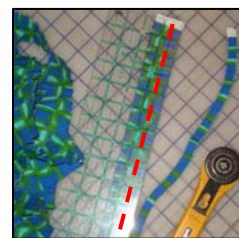
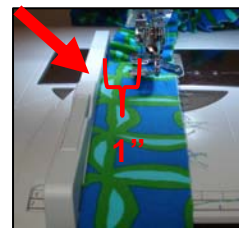
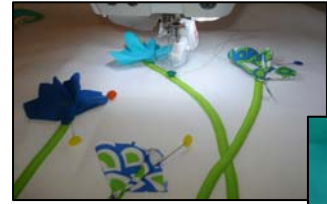
- Choose your favorite mode
- Using the foot control or the Start/Stop button, stitch the bud in place at the stem intersection, removing the pins before stitching
Tip: You may want to shorten your Stitch Length for more control.
- Repeat for all buds placed

Finishing Details Ruffled Trim

- Cut 4" wide fabric strips on the straight of grain from selvage edge to selvage edge
Note: 10 strips were used in this project with several yards to spare. Err on the side of caution and make more than you need. A 1" finished ruffle was desired which equals 2" of fabric to create. The final 1/2" seam allowance will be trimmed down after ruffle is made from larger width.
- Stitch the selvage ends together and press the seam allowances open
- Fold and press the long strip in half to 2" wide
- Thread the machine and insert the bobbin with thread to match the fabric to be ruffled
- Thread the bobbin basket for sewing tension
- Attach the Ruffler Foot #86
- Set the Ruffler to create a tuck at every 6th stitch
- Turn the screw on the front of the foot counterclockwise to create the deepest tuck possible given there are two layers of fabric to be ruffled
- Select Straight Stitch #1
- Attach the Slide-on table guide and position it 1" to the left of the needle
- Decrease the motor speed
- Stitch the entire length of the folded strip, resting the fold of the fabric strip against the guide on the slide-on table, to create a 1" finished ruffle
- Press the ruffle so all of the tucks lay uniformly
- On a cutting surface, align the ruler edge 1/2" away from the stitched seam line on the ruffle's raw edge side
Note: Make sure the folded edge of the ruffle is under the ruler and not being cut off.
- Trim away the excess seam allowance down the entire length of the ruffle using a rotary cutter

Final Prep for Slipcover Front and Back

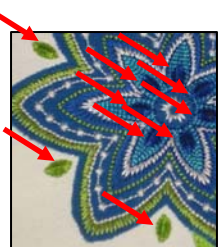
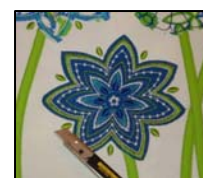
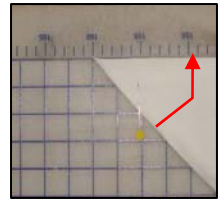
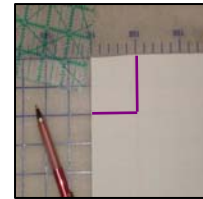
- Place the pressed slipcover front onto a large cutting surface
- Remark the exact finished size of the slipcover front using as many of the same lines as were placed before; you may see pull compensation at the sides as the original markings could be too small.
- Cut away the spare excess fabric on the newly marked slipcover front



- Cut the fabric for the slipcover back the exact same size as the slipcover front
- At both upper corners on the right side of the front and back, draw a 2" square
- Fold the side edge up to align with the upper edge, keeping the corner point sharp and the right sides together
- Place a pin and mark the 2" line
- Repeat for all other upper corners
- Attach Reverse Pattern Foot #1D
- Engage BERNINA Dual Feed
- Position the table guide 2" to the right of the needle
- Using thread to blend with the fabric, stitch along the lines marked to create all 4 boxed corners
- On the slipcover front, pin the seam allowance to the sides
- On the slipcover back, pin the seam allowances to the top
- Layer the ruffled strip between the right side of the slipcover front and the right side of the back, keeping all raw edges even
- Secure the edges together with binder clips or pins
- Using the same machine set up and a 1/2" seam allowance, stitch all the way around the slipcover securing the stitches at the beginning and end
- Attach Overlock Foot #2A
- Select Stitch #10
- Align the pin on the right side of the presser foot exactly over the raw edges of the fabric layers
- Stitch around the entire slipcover, overcasting the raw edges together to neaten up the inside
- Turn the slipcover right side out and press with a press cloth and towel
- Turn the hem of the slipcover up the desired amount; if using the selvage edge, use that as your guide
- Press a double fold hem in place
- Attach Edgestitch Foot #10D and engage BERNINA Dual Feed
- Select Straight Stitch #1
- Move the needle position 2 to right of center
- Stitch the hem in place, aligning the fold of the hem against the right side of the blade on the foot

Finishing Touches!

- Using a sharp blade, carefully slice down the center of the built-up satin stitched elements of the embroidered flower garden; this will create the tufting effect
- If desired, add crystal bling to the project by transferring one crystal at a time using the Transfer Tape
- With a dry iron, press the crystals in place as desired



Ready to Fit for the Princess

Tip: If creating a large headboard slipcover, it is easier to have someone assist with this step.

- Starting at the top of the foam support, work the slipcover down into place
- The fit will be snug
- Position the boxed fabric corners in place at the top of the foam
- Tuck the hem behind the mattress
- Smooth the slipcover flat and straighten the ruffle down the center of the sides and across the top



Enjoy one side ...



or the Other!

