

Simply Applique

Creating an Applique Patch

Setting Up the File



- Open the software. The software opens to a Home page.
- Click on Embroidery Canvas button in the upper left corner.
- Select Insert Artwork.
- Navigate to C: Users> Public> Public Pictures> BERNINA 9 Pictures> Artwork. Select the 02_Basic Shapes folder.
- Select Shape_01.
- Select it; click on Open.

Editing the Artwork

- With the artwork selected, change the size in the Transform toolbar to 200%. Press Enter.
- Right click on the artwork and select Lock.

Creating the Applique



- Select the Digitize Applique tool in the Applique Toolbox.
- Choose a color.
- Digitize around the artwork, using left clicks at the corners and right clicks in between. Clicks do not have to be close together.
- As you get close to the first click, press Enter to let the software close the shape.
- Press Esc.



- In Color Film, if Show Objects is not activated, you will see three objects; the placement line, the tackdown, and the cover.

Creating the Applique

- To edit the applique, double click on the satin stitch.
- This opens Object Properties.
- Place a check mark by Cutting line in Object Properties.
- Click Apply. A fourth object appears; it is placed after the placement line. This is the cutting line.
- Change the Width of the Cover Stitch to 3.5 mm (.138").
- Click Apply.
- Uncheck Offsets locked to cover offset.
- Change the Tack Offset and Cover Offset to 0.01"(.25 mm).
- Click OK.

Add Lettering

- Press A on the keyboard to open Lettering Object Properties.
- Type a name or a word in the box.
- Choose the Medley font and change the height to .70".
- Press Apply and click on the screen to add the lettering to the shield.

NOTES:

It is always a good idea to lock the artwork so it is not accidentally moved.

Changing the offsets will assure that the cover will cover the raw edge of the cut applique piece.



- Change the lettering to a contrast color.
- If your lettering is too large for the shield, change the height in Object Properties; then click OK.
- Place the lettering in the upper part of the shield.
- Select the lettering; hold the Ctrl key; and select the shield.
- Click on Align Centers Vertically in the Arrange Toolbox.



Resequencing the Applique

- Deselect.
- Click on the applique; then click on Break Apart in the Applique Toolbox.
- Select the word and click on Back One Color in Color Film.
- Select the Cutting line (green outline) in Color Film.
- Select Copy; then Paste.
- Change the color to a contrast color.
- Move the copy to stitch after the lettering by clicking on Back One Color.
- This stitching line will be the Cutting line for the back of the patch.

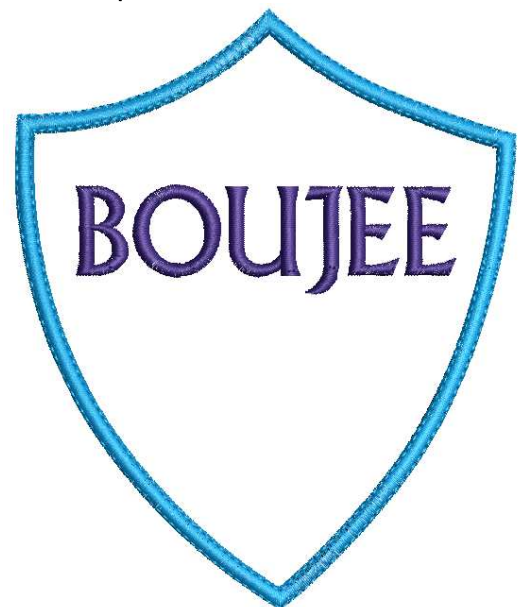
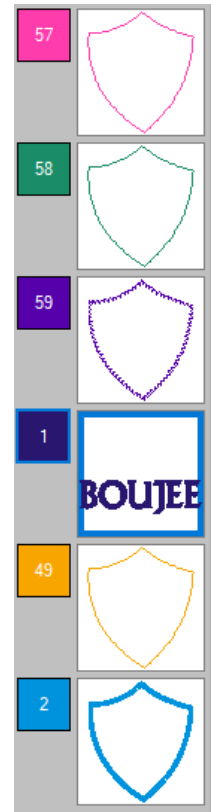


Adding Detail

- Select the satin stitch in Color Film.
- Click on Outlines and Offsets in the Edit Toolbox.
- Check Object Outlines.
- Select the Single stitch and the same color that you used with the satin stitch.
- Check Offset Outlines.
- Change the Offset to -3.75 mm.
 - ◆ The satin width was set at 3.5 mm and the offset was set at 0.25 mm.
 - ◆ The sum of these is the offset amount that places the single line of stitching along the edge of the satin stitch.
- Select 1 for the Offset Count.
- Choose the Single Stitch and the same color as the satin outline.
- Uncheck Include Holes.
- Click OK.
- Save the file as Applique Patch.



NOTES:



Digitize Applique with Holes

Setting Up the File



- Select New Blank Design.
- Select Insert Artwork.
- Navigate to the saved file, B for BERNINA.
- Open the file.
- Right click and select Lock.

Digitize the Artwork



- Select Dim Artwork.
- Select Digitize Applique with Holes. This is the tool to use for appliques with inside and outside borders.
- Select a contrast color.
- Digitize around the outside of the applique, using left and right clicks.
- When you get around the letter back to the point where you started, let the software close the object by pressing Enter.
- Digitize around the inside of the top of the letter, again letting the software close the shape. Press Enter.
- Finally, digitize around the lower part of the letter, pressing Enter to close the shape.
- Press Enter one more time to generate the stitches.
- Press Esc to deactivate the tool.

Editing the Applique



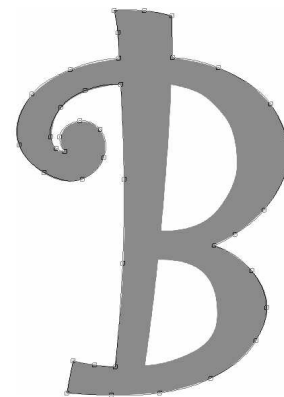
- Double click on the applique to open Object Properties. Change the Width to 2.5 mm and press OK.
- Select the letter; click on Reshape.
- By adding another left click close to the point of the swirl of the B; then moving the point, the swirl will be improved. See illustration. Click on the line to add a point.
- You may move, add, delete, or change any of the other reshape points. Press Esc.
- Select File> Save As and name the file, B for BERNINA.

Using the CutWork Tool

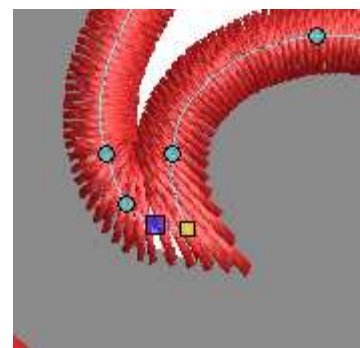
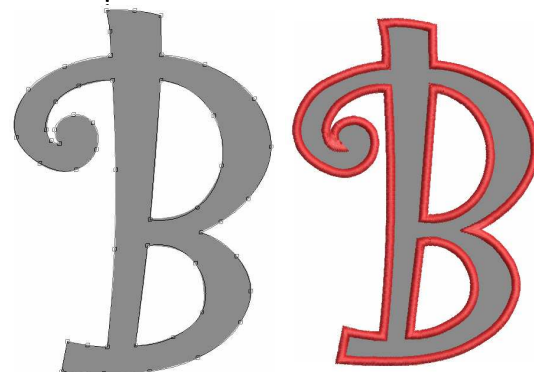


- Select the applique.
- Click on Export Cutting File.
- Change the format of the cutting file to EXP.
- Click on Export.
- Click on Open.
- Navigate to Libraries> Embroidery> My Cutting Files.
- Select the exported file and click on Open.
- Click OK in the dialog box that opens.
- To make this a more efficient stitch out, select each cut position and drag to combine with the same cut positions in Color Film.

NOTES:



Digitize around the object using left and right clicks. Use the Backspace key to erase a click.





- See the Color Film screen capture.
- When the design is sent to the machine, add a basting box around the design before using the CutWork tool.
- Save the file by clicking on Save. Navigate to the location to save the file; click on Save.

Converting to Applique

Setting Up the File



- Select New Blank Design.



- Select Insert Embroidery.
- Navigate to Libraries> BERNINA 9 Embroidery> 01_Basic Shapes.
- Select Shape_04. Open the file.
- While the design is selected, change the size to 125%.
- Press Enter.
- Right click and Ungroup the design.

Editing the Design

- Select the inside circle; click on Color # 4.
- Select the outside circle; click on Color # 15.

Converting to Applique



- Select Ctrl + A.
- Click on Convert to Applique.

Editing the Stitches



- Select the white satin stitch.
- Right click on Textured Edge in the Effects Toolbar.
- Place a check mark by Textured Edge.



- Select Both Sides (middle square).
- Adjust the Texture and Span as desired. Click Apply.
- Readjust if needed. Click Apply.

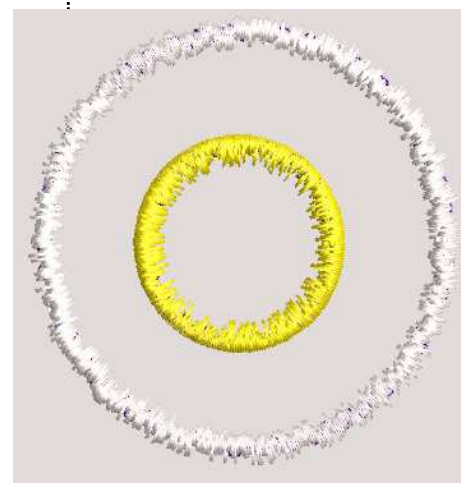
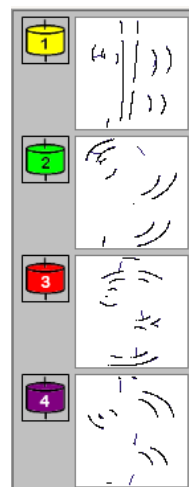


- Select the center circle; place a check mark by Textured Edge.
- Select Side 2. Click Apply.
- Adjust as desired; then click OK.

Adding Fabric

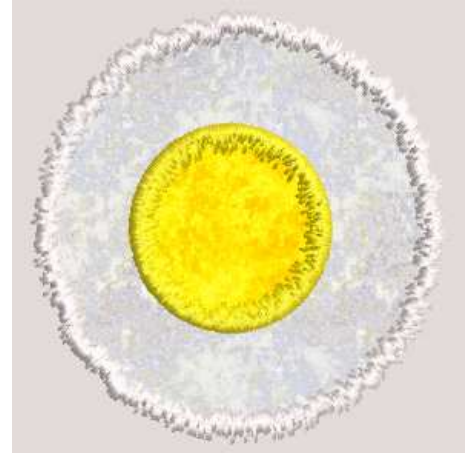
- Double click on the white to open Object Properties.
- Change the width of the tackdown to 1.5 mm. Click Apply.
- Click on Applique Fabric.
- Click on the + sign in front of Benartex; then open Apple Butter.
- Select the white fabric.
- Click OK; then Apply.
- Select the yellow circle in Color Film.
- Change the width of the tackdown to 1.5 mm. Click Apply.
- Click on Applique Fabric. Select a yellow fabric.
- Click OK; then OK again.

NOTES:





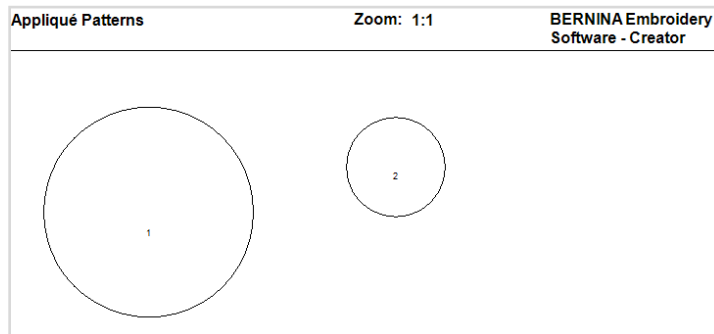
- Select the yellow circle and click on Move to End in Color Film.
- To see the fabric, activate Show Applique Fabric.
- Move the yellow circle slightly off center.
- Select File> Save As.
- Name the file, Sunny Side Up.

NOTES:**Printing a Pattern for Cutting**

- Select Print Preview.
- Click on Options.
- Place a check mark by Applique patterns.
- Check any other items you wish to print; uncheck those you don't.
- Click OK.



- Select Close.
- Click on Print.
- Use this pattern to cut the applique shapes with a pair of scissors. If you use a double-sided adhesive, you usually must trace from the wrong side of the printed pattern. In this case, there is no need to do that.

**Using a Cutting Machine**

- Select Export Cutting File.
- Place a dot by Automatically distributed. This separates the yolk from the egg.
- Change the format by Applique Shapes to SVG.
- Click on Export.
- The file is sent to your My Cutting Files folder in My Embroidery.
- Open it in your cutting machine software to cut the file.