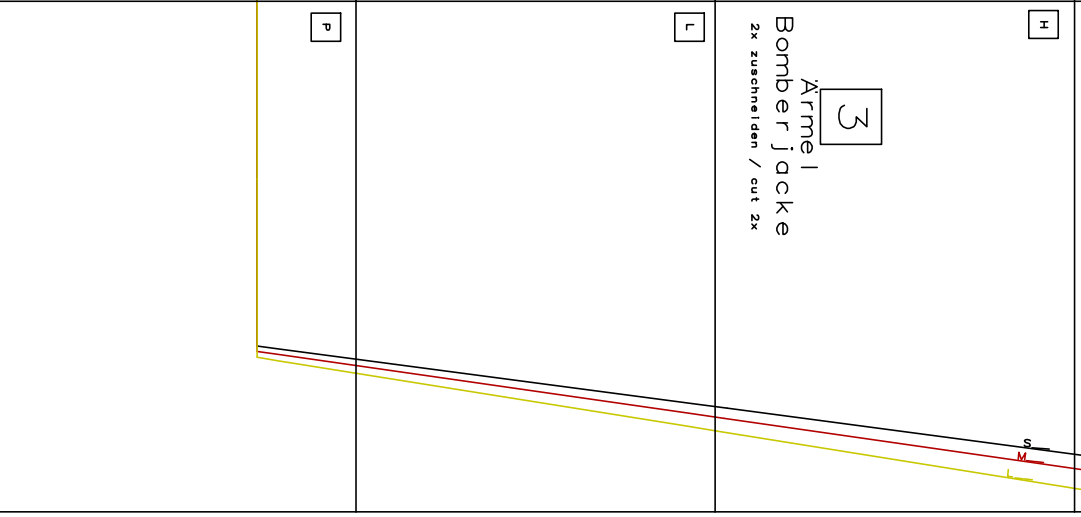
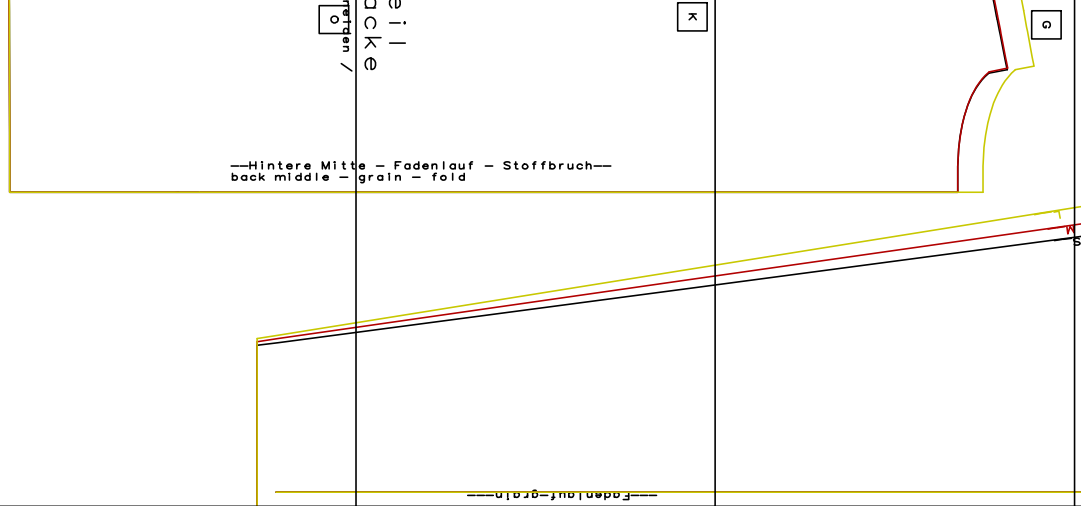
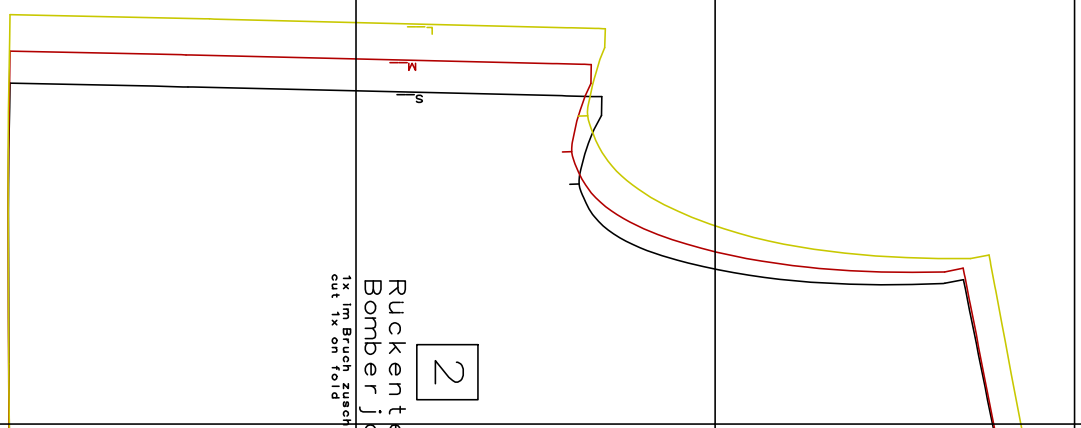
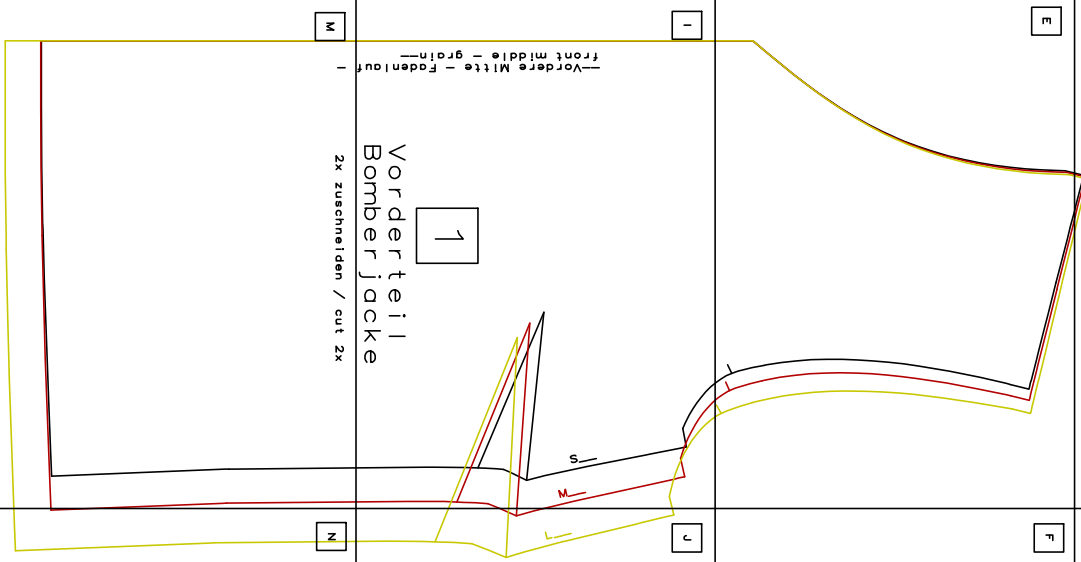


Kontroll-
kästchen
Stich



M

N

O

P

I

J

K

L

E

F

G

H

A

B

C

D

—Vordere Mitte - grain-
front middle - grain-

—Hintere Mitte - Fadenlauf - Stoffbruch-
back middle - grain - fold

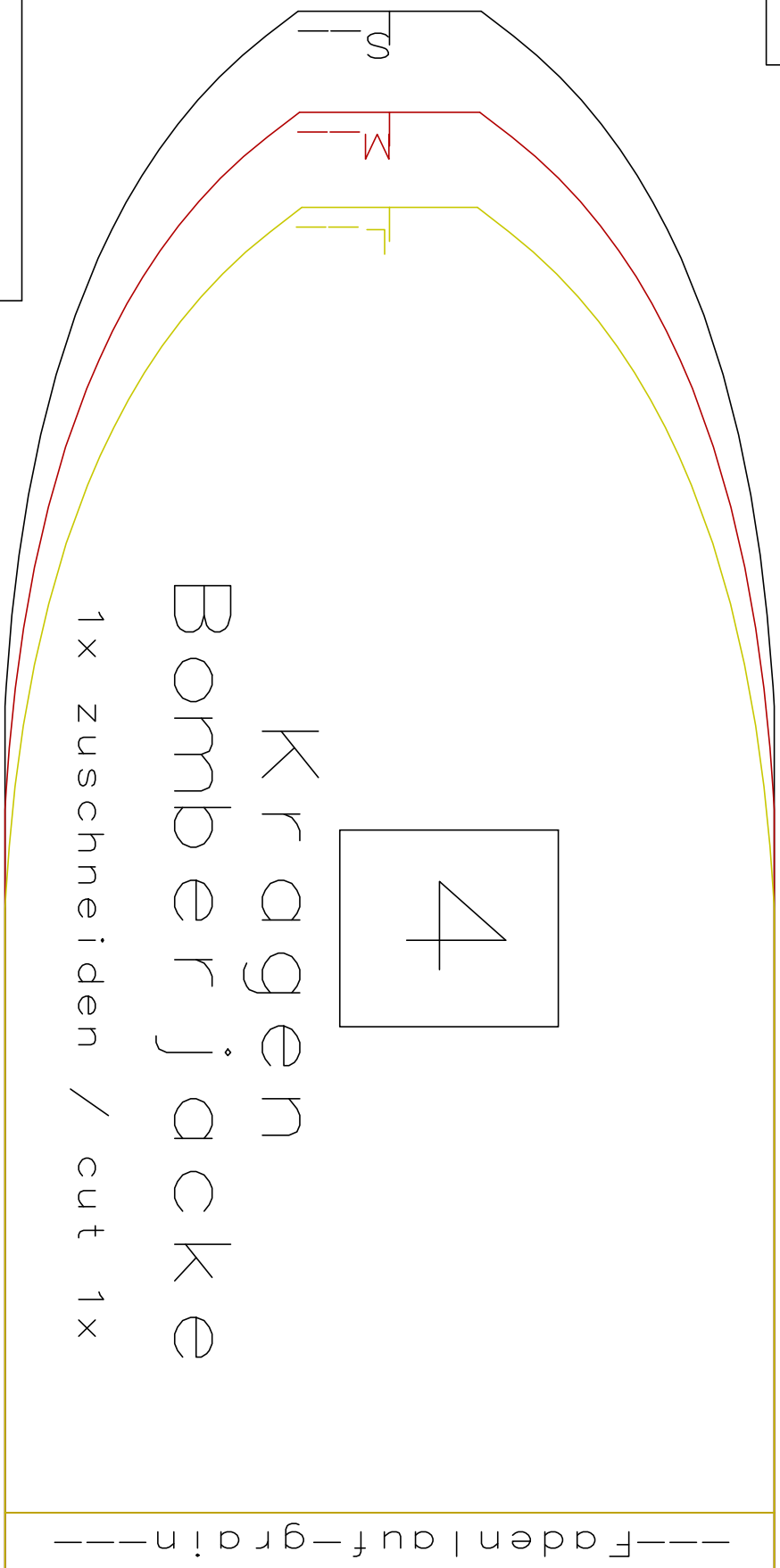
1

2

3

4

A



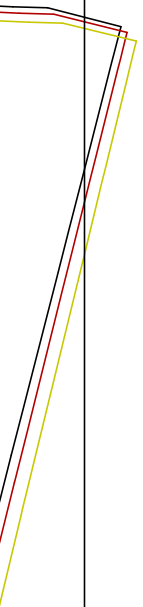
4

Kragen
Bomberjacke

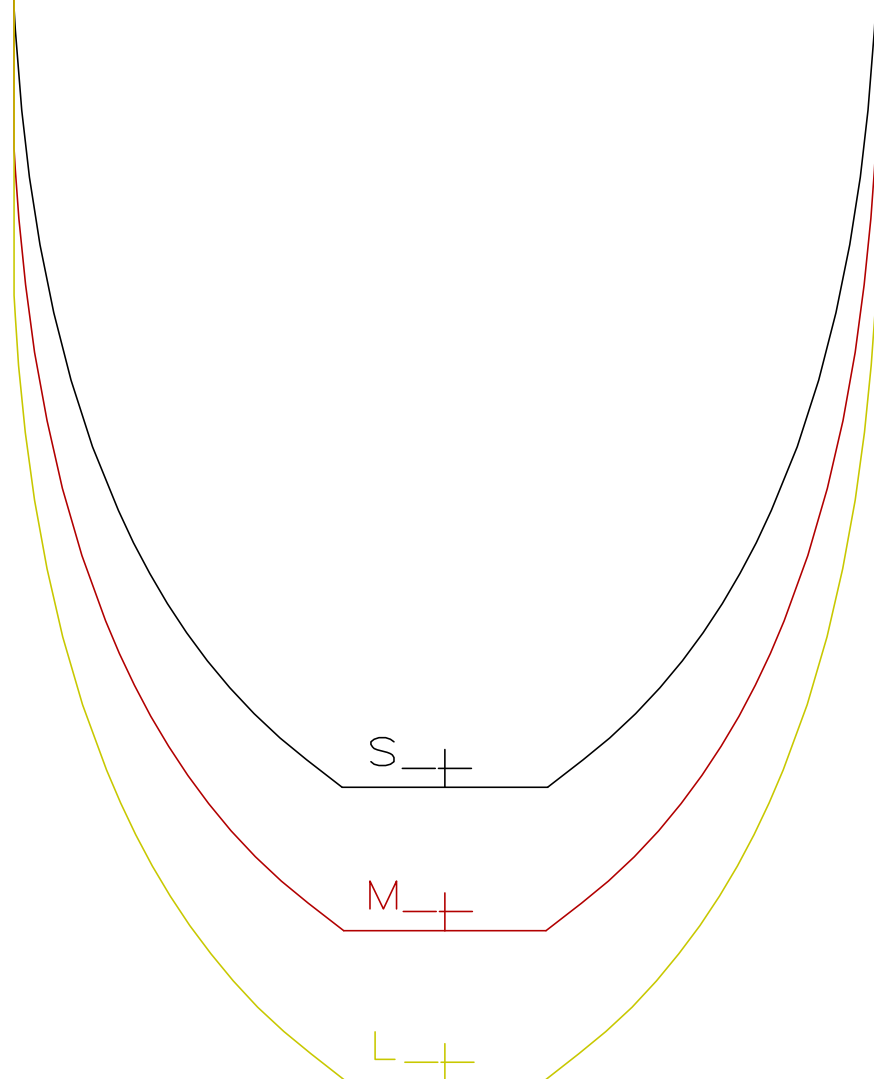
1x zuschneiden / cut 1x

---Fadenlauf---grain---

Kontroll-
kästchen
5x5cm



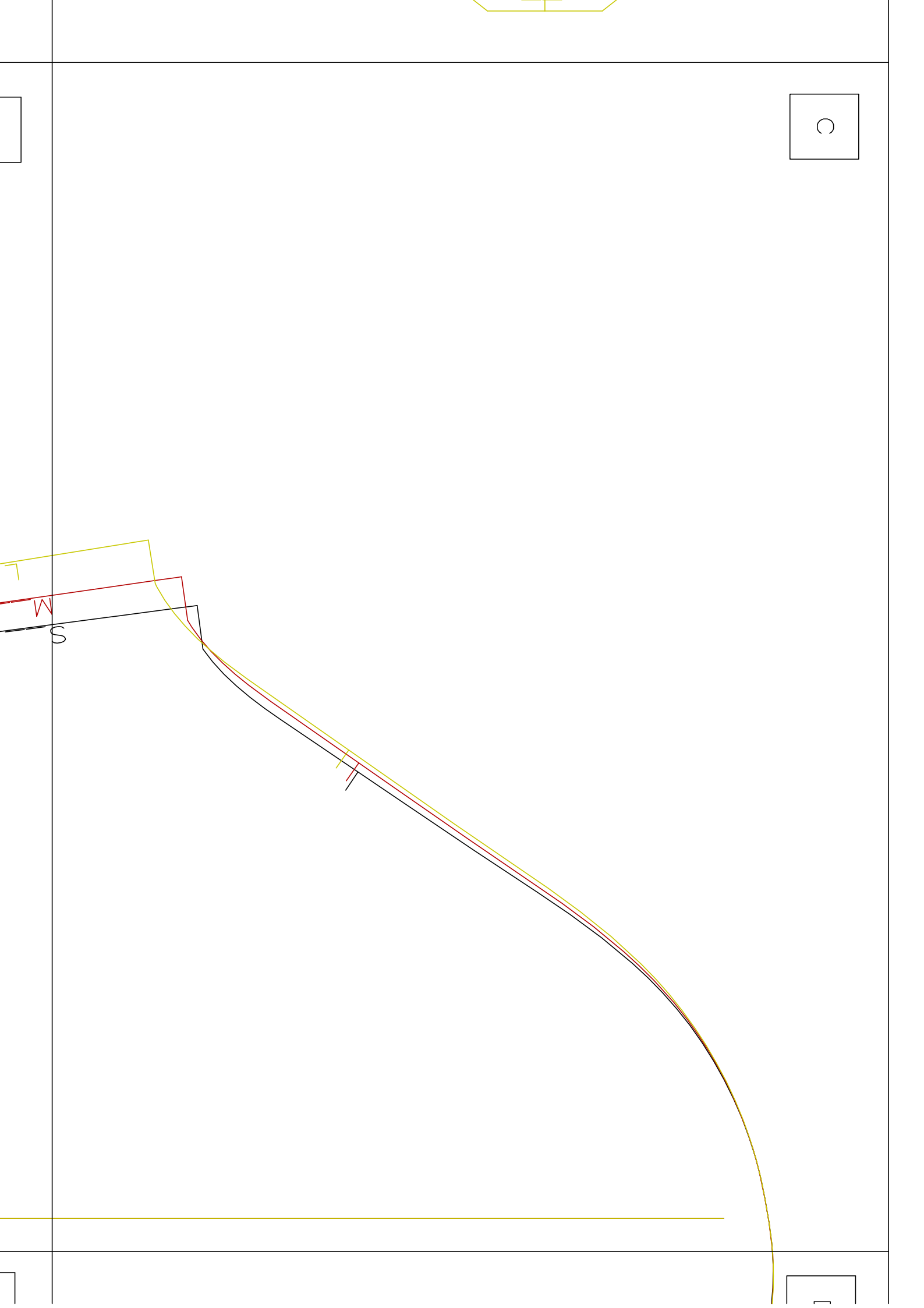
U

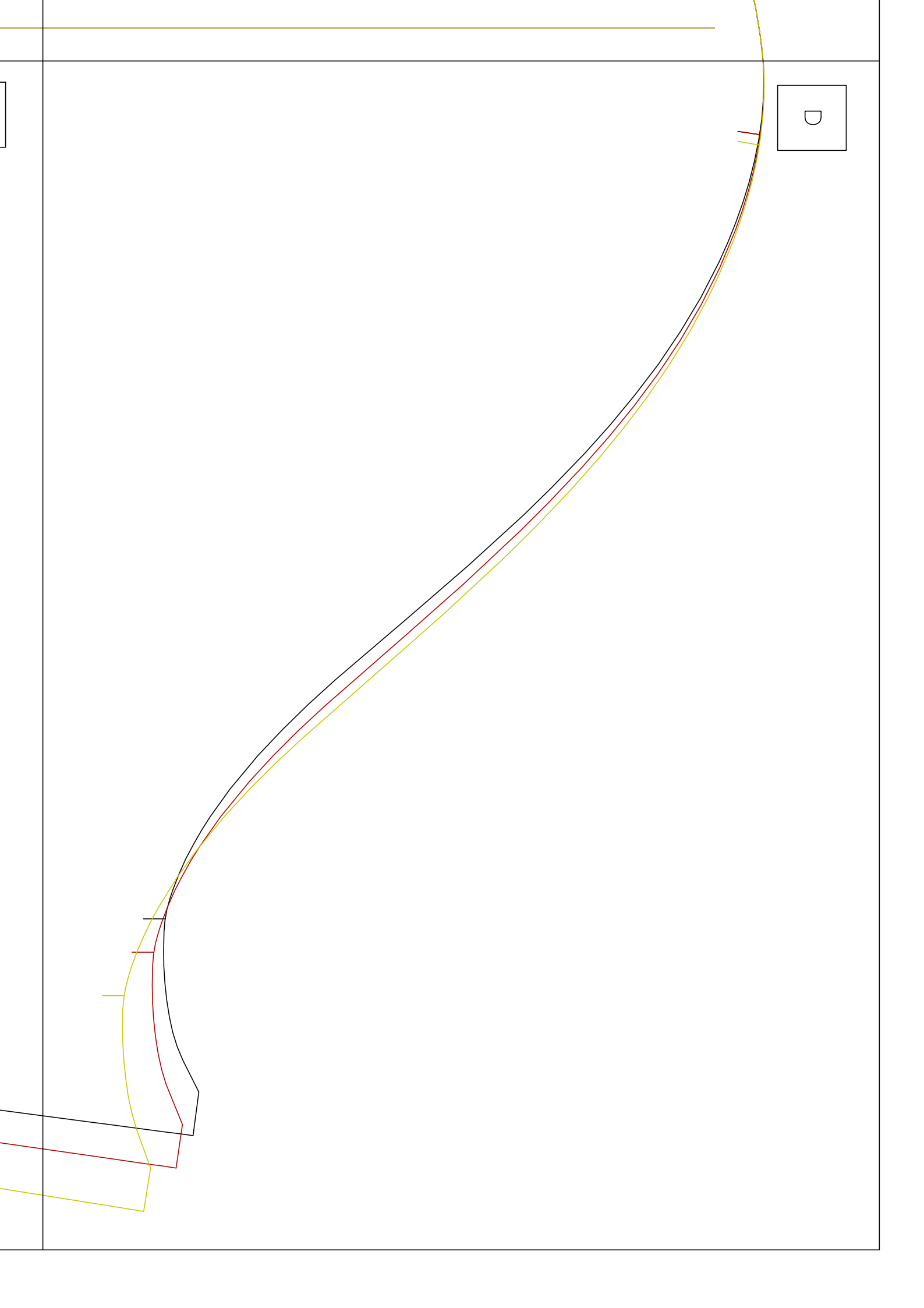


S+

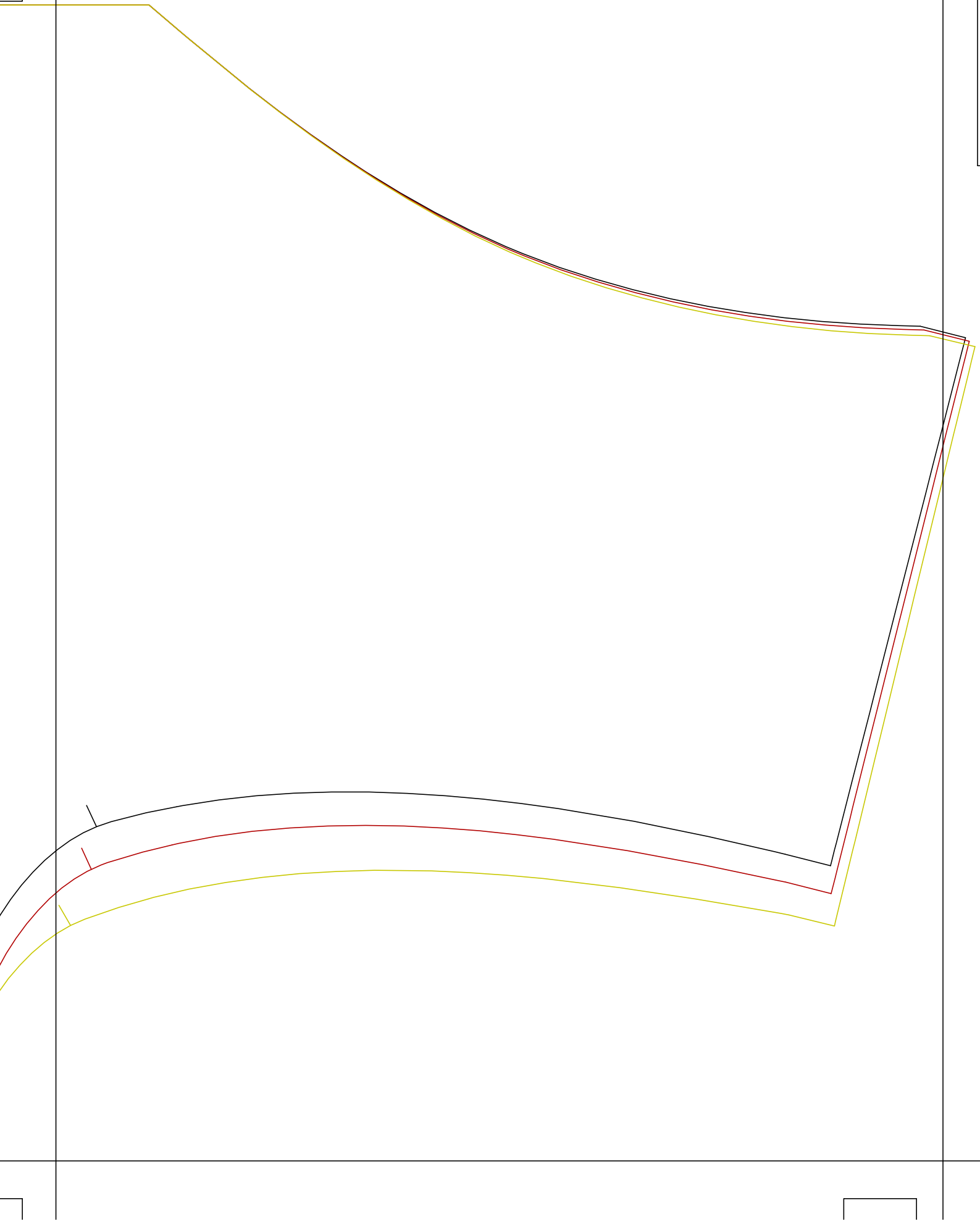
M+

L+

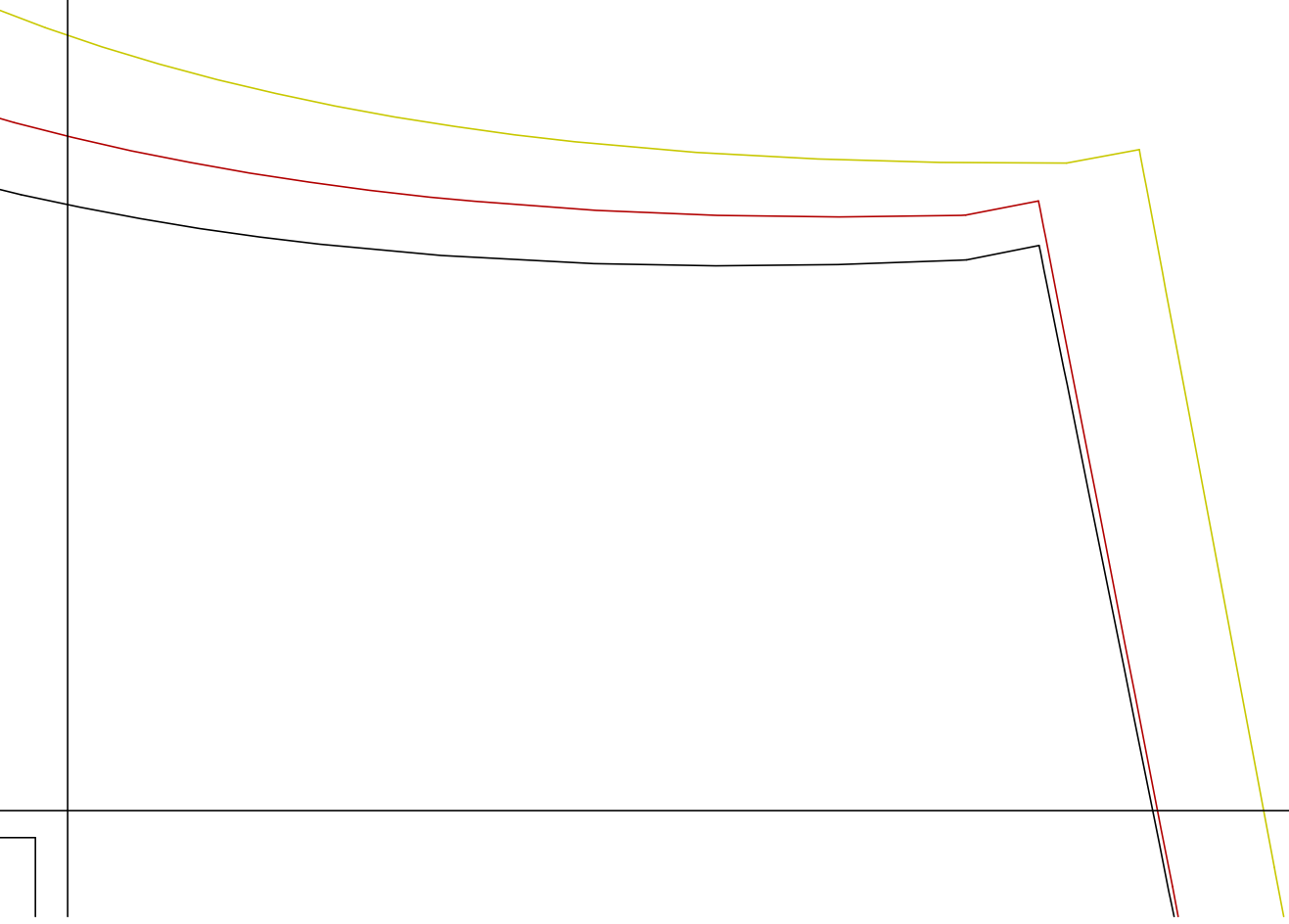




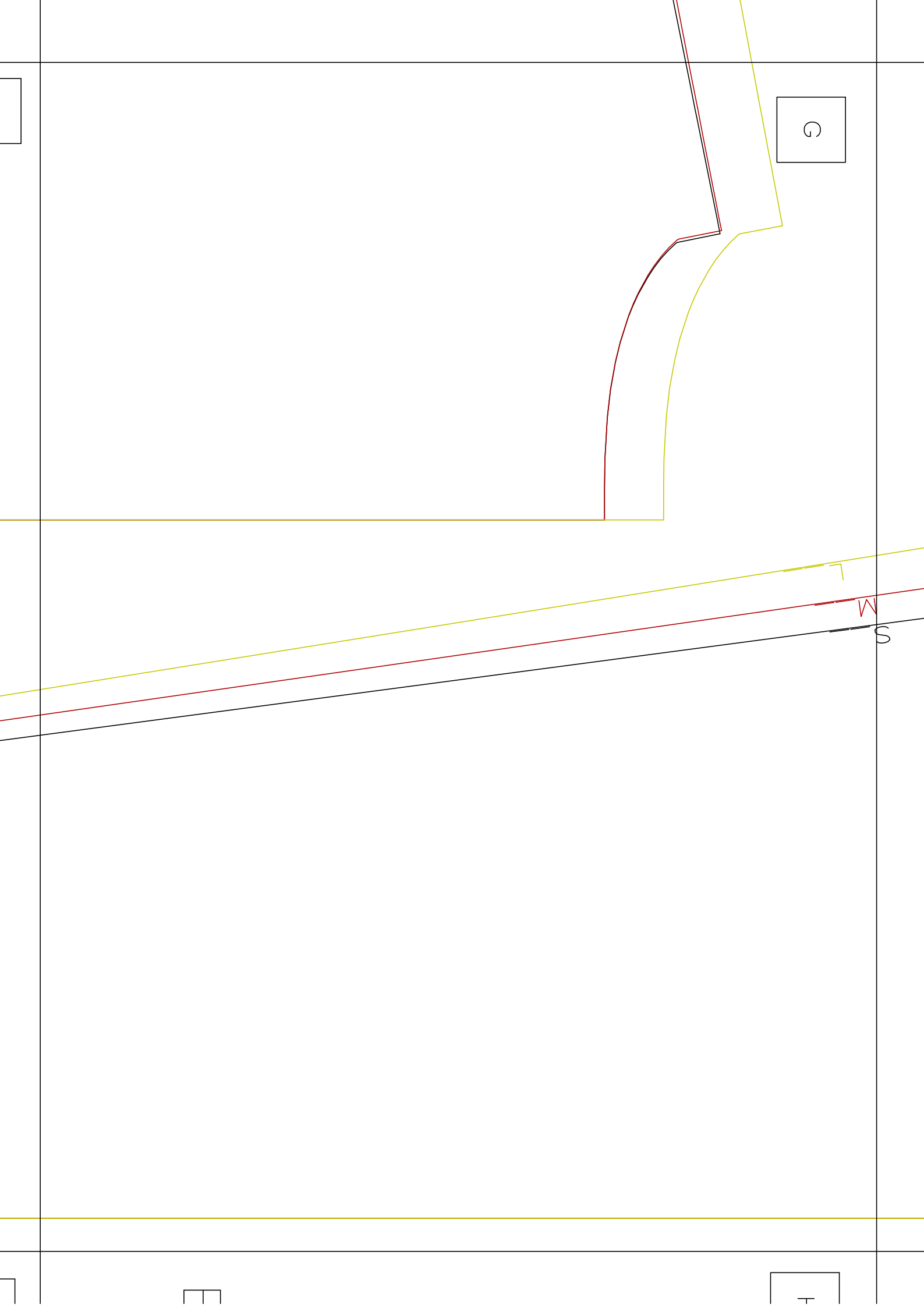
11



7



8



H

3

Ärme |

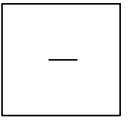
Bomberjacke

2x zuschneiden / cut 2x

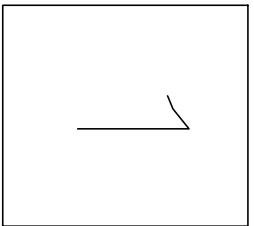
S

M

L

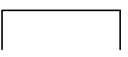
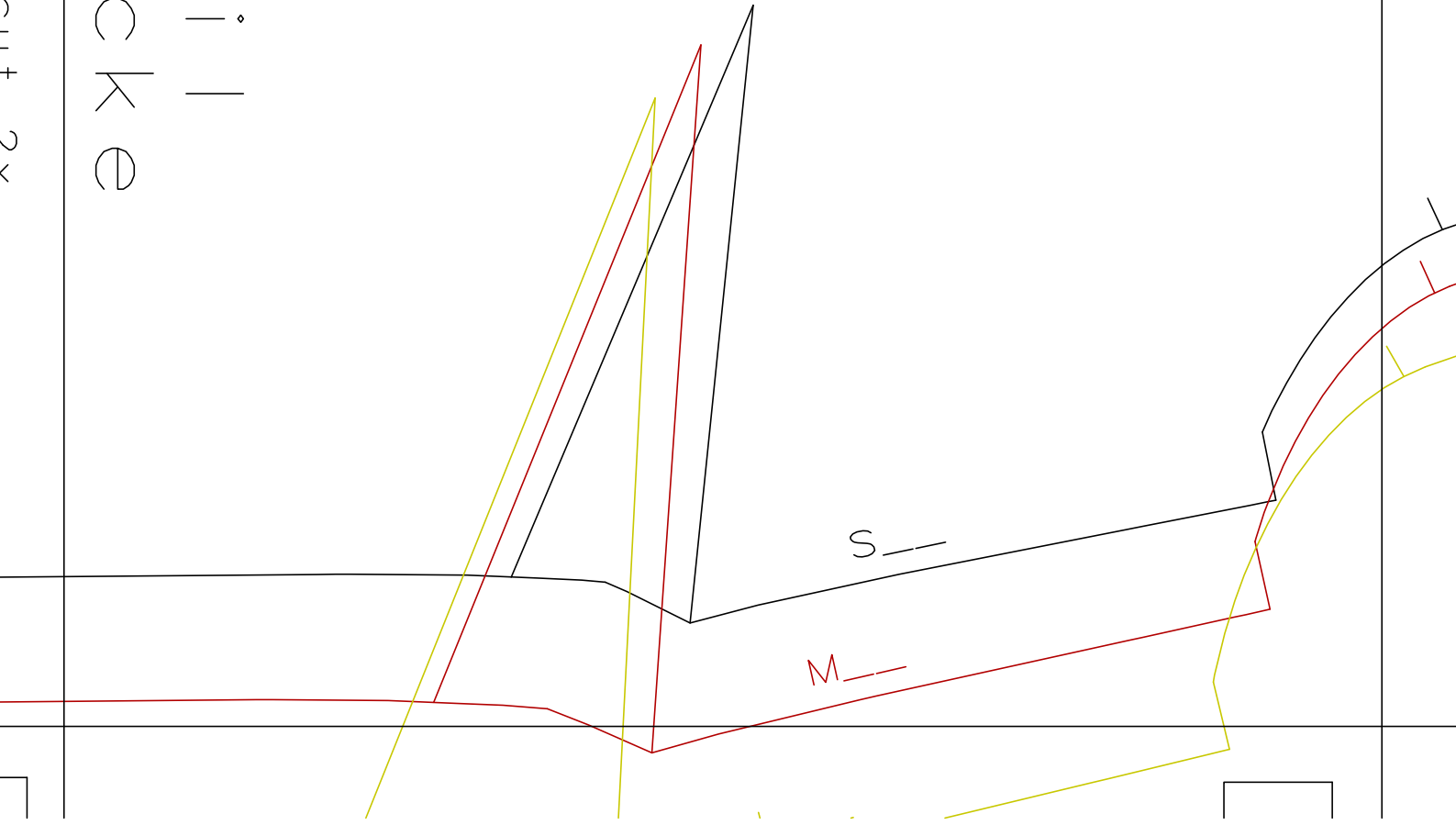


--Vordere Mitte - Fadenlauf
front middle - grain--

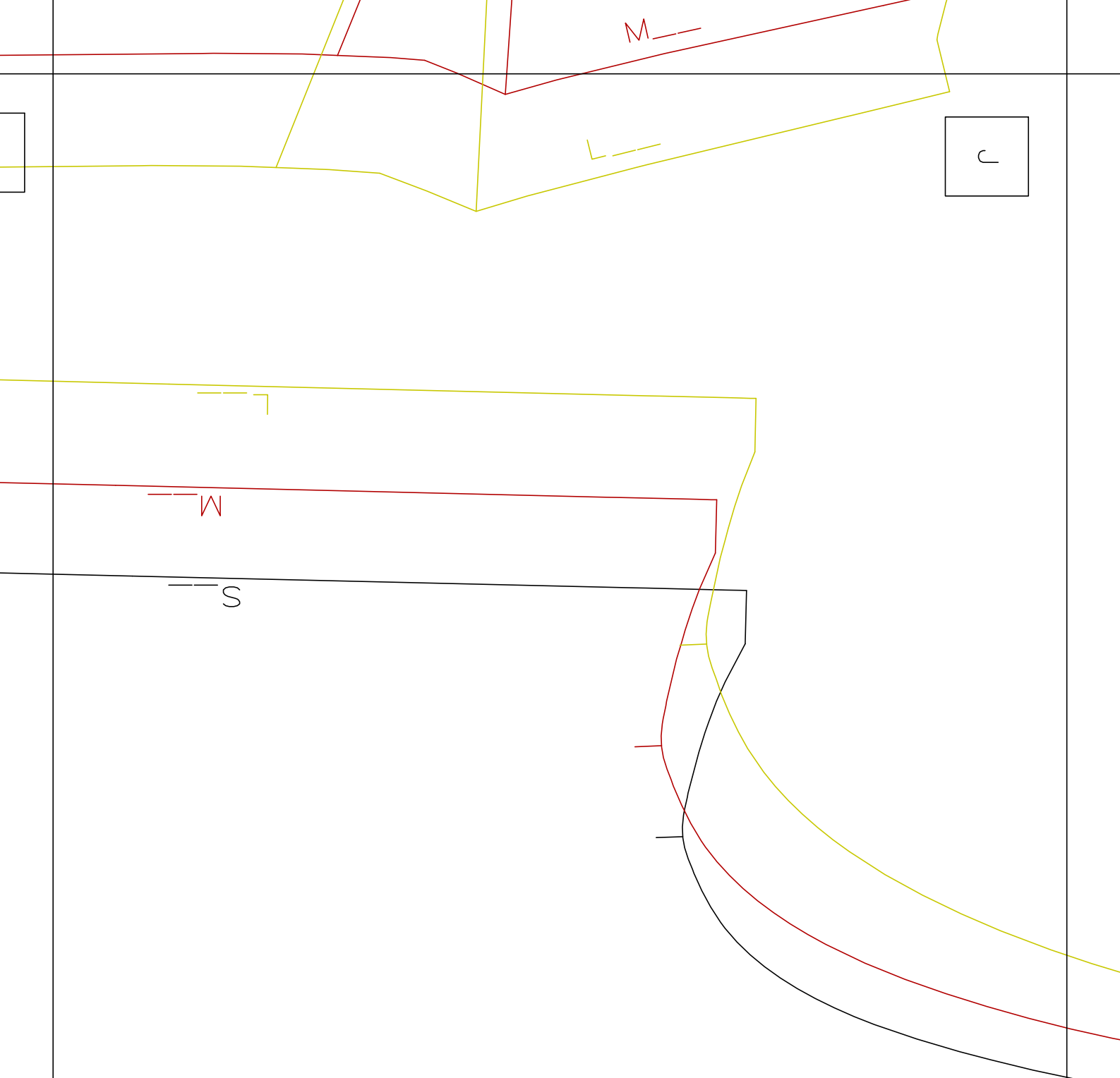


Vorder teil
Bomber Jacke

2x zuschnaiden / cut 2x



1



2

2

Rückente
Bombenja

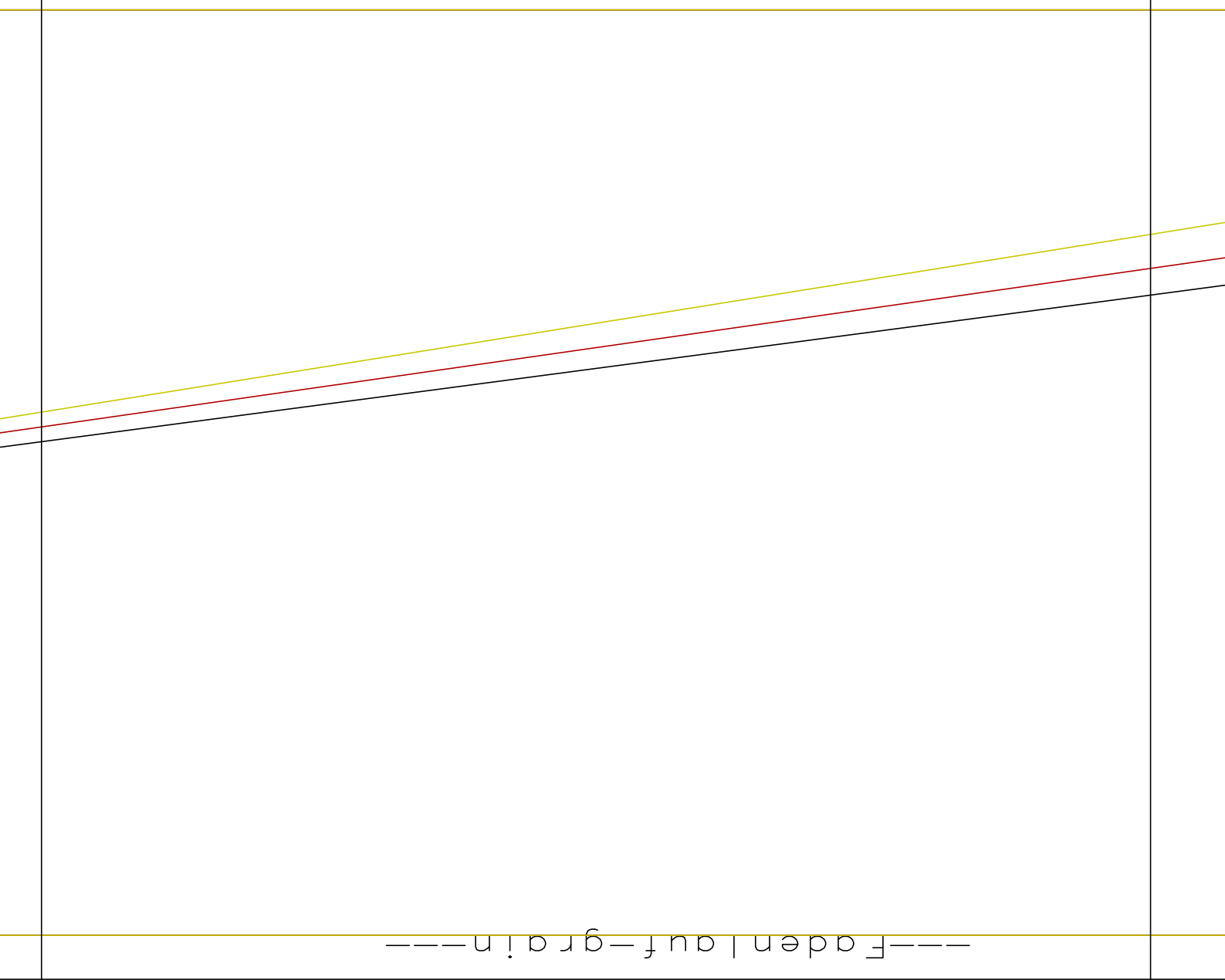
1x im Bruch zuschne

schnneiden /

J. t
e i
a c k e

K

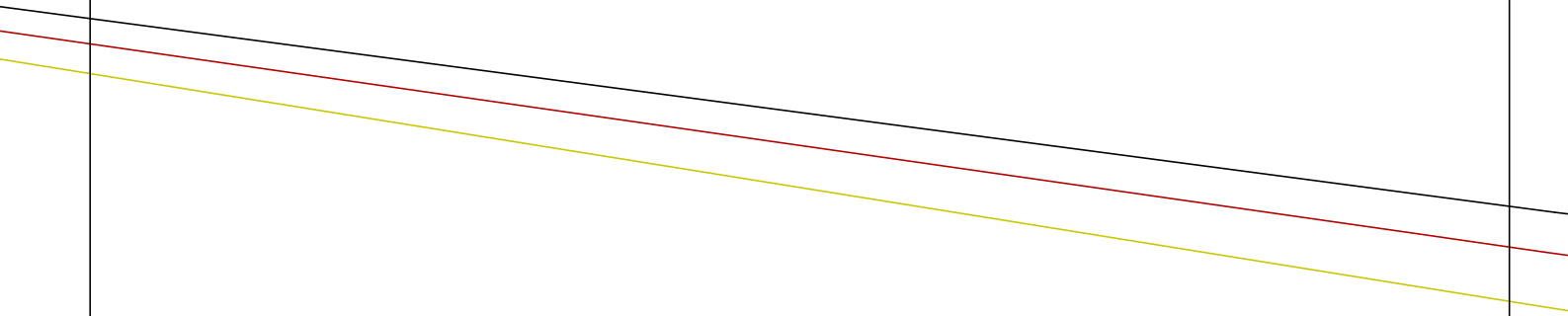
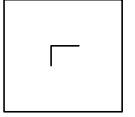
tte - Fadenlauf - Stoffbruch--
- grain - fold



---Fadenlauf-grain---

L

---Fadenlauf=grain---



Bomber Jacke

au f

1

2x zuschneiden / cut 2x

M

1

Bomber jacket

1x im Bruch zuschneiden
cut 1x on fold

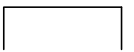
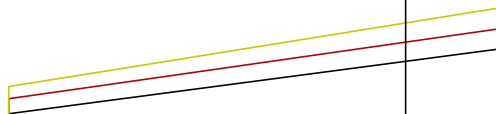
N

C

JACKIE

M
schneiden /

--Hintere Mitte --
back middle - gra



၂