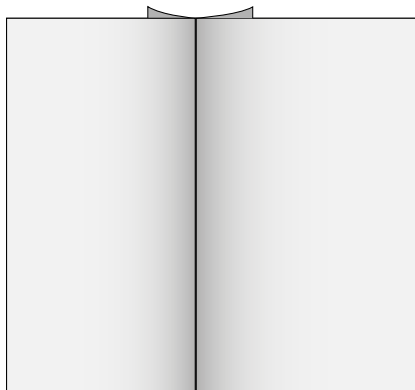


BERNINA FASHION LOOKS

Falt fell seam Men shirt, Rain jacket	Page 2-3
Concealed Button Front Men's shirt and Men's jacket	Page 4-5
Bellows pocket Women's Pants	Page 6-7
Integrated hood Rain jacket	Page 8-9



Flat fell seam



A fell seam ideally has a seam allowance of 1.5 cm (already included in the pattern here).

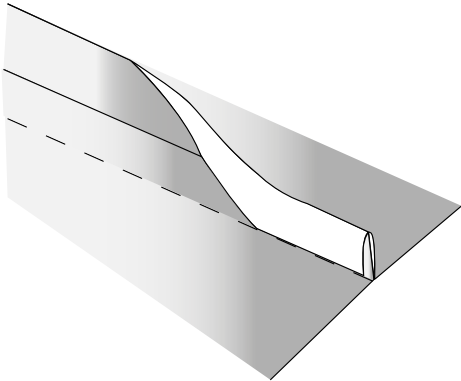
1. Place fabric pieces on top of each other, left sides together, topstitch along the marked seam line.



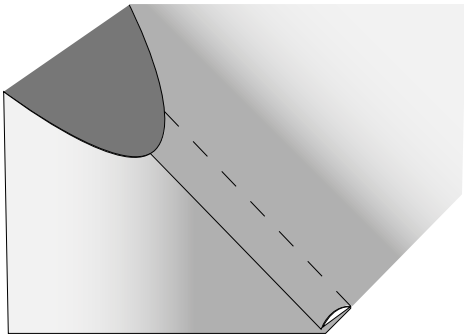
2. Iron the seam allowances apart first, then iron on one side.

3. Trim back the bottom seam by 1cm

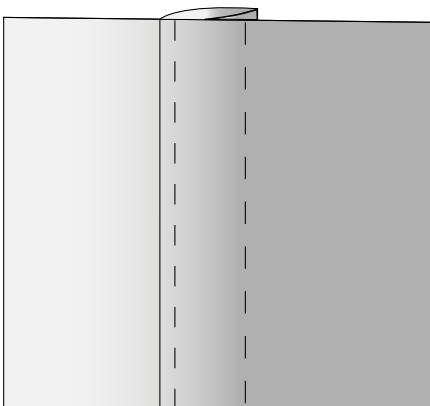
Flat fell seam



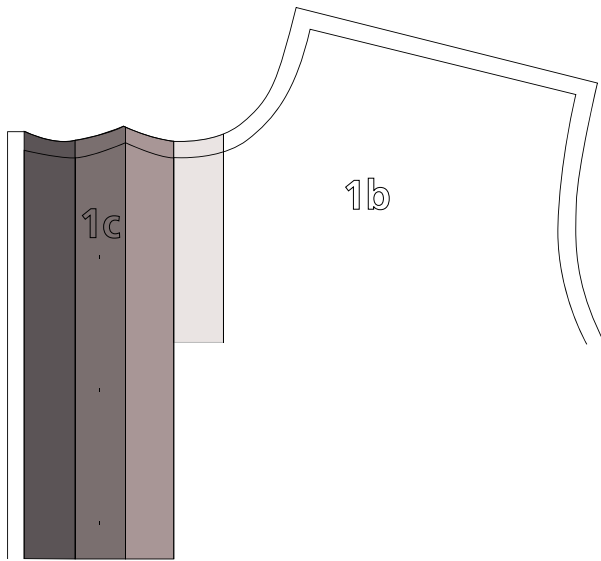
4. Fold in the top seam allowance (i.e. fold the wider seam allowance around the narrower one) and pin in place, iron everything on one side.



5. From the right side of the fabric, topstitch the seam allowance.

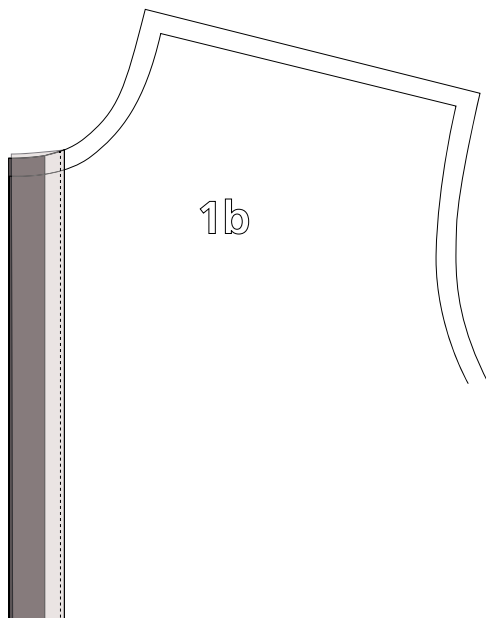


6. If desired, topstitch a second seam line along the original seam.



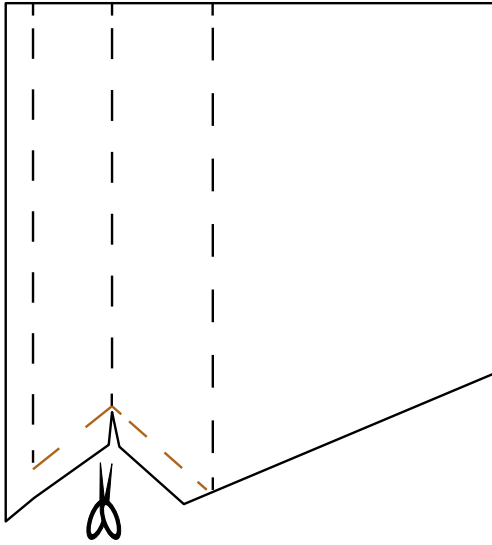
4. On the left front piece, press the front edge inwards first at the fold line, then at the facing fold line and finally at the seam allowance line. Topstitch narrow edge.

5. Sew buttonholes lengthwise on the left front piece as drawn. The buttonhole size depends on the button size.



6. Sew buttons on the right front part.

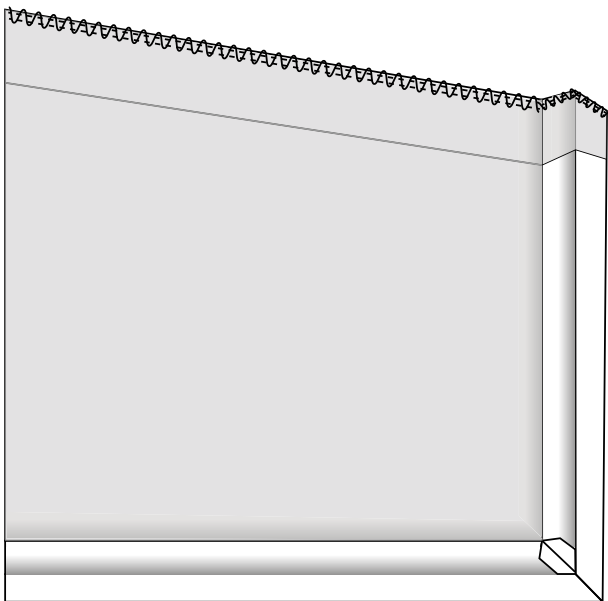
Bellows pocket



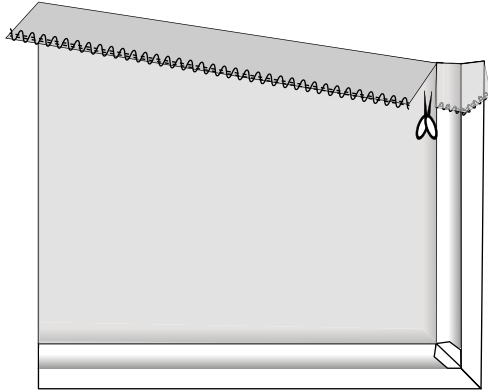
1. Fold the pocket according to the illustration so that the two tips meet and topstitch on the red lines. The right side of the fabric is on the inside.

2. Topstitch the points to each other, cut seam allowance of the middle point and turn the pocket. Flatten the corners so that they meet exactly on the inside.

3. Important: at this point, iron the folds and seam allowances so that the folds are ironed in, the seam ironed apart and seam allowance ironed over, are visible on the underside of the pocket.

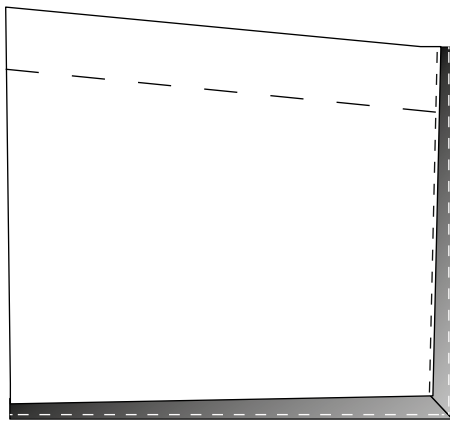


4. Serge the pocket opening and seam allowances.



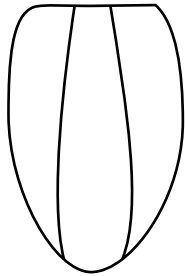
5. Iron the pocket opening at the fold line and cut at the marked point.

6. From the right side of the fabric, pin the pocket to the trousers and narrowly stitch the edge of the pocket (only the bottom side is sewn on).

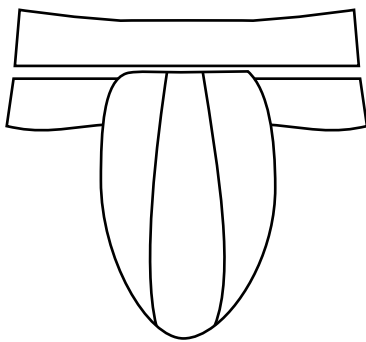


7. The „bellows effect“ is now created when the upper side of the bag is folded over the lower. The two sides of the pocket are then sewn together in the seam of the neckline.

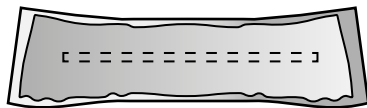
Integrated hood



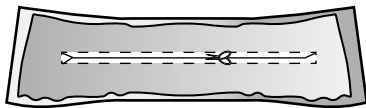
1. Sew the sections of the hood together.



2. Place the hood between the two inner collars and sew them together.

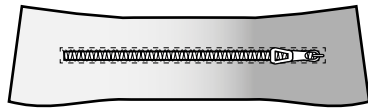


3. Cut out the upper collar 2 times from the outer fabric, place the two pieces on top of each other with right sides together and topstitch the marked area for the zipper.

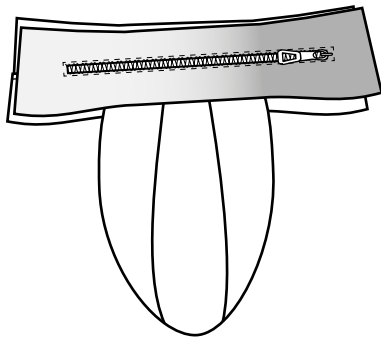


4. Cut the inner area of the stitched square according to the illustration and turn it over.
The inner collar can be cut back.

Integrated hood



5. Position the zipper from the left to the opening and topstitch all around.



6. Now sew the prepared pieces to each other left to right at the upper edge. Place the hood down.



outside

7. the upper collar with the integrated hood is now ready. Sew the bottom edge to the neck hole. After the front zipper is sewn, sew the lining to the upper edge of the collar, right sides together.



inside

