

Boundary and Markers in Q-matic

Boundary and **Markers** are two ways that designs can be placed on a quilted project using BERNINA Q-matic Longarm Automation System.

When using the **Boundary** tool found in the Tool Center there are some options that can be used.

- Control
 - Select to use the **Screen** on the computer or to use the **SET** icon on the **Sewhead** screen.
 - The design can be Morphed to Fit into the four sided shape drawn by changing the shape and the size of the selected design or if using **Maintaining Ratio**, the selected design will only change size.
- Options
 - This function allows a **Margin** to be set by entering the measurement needed.

Preview

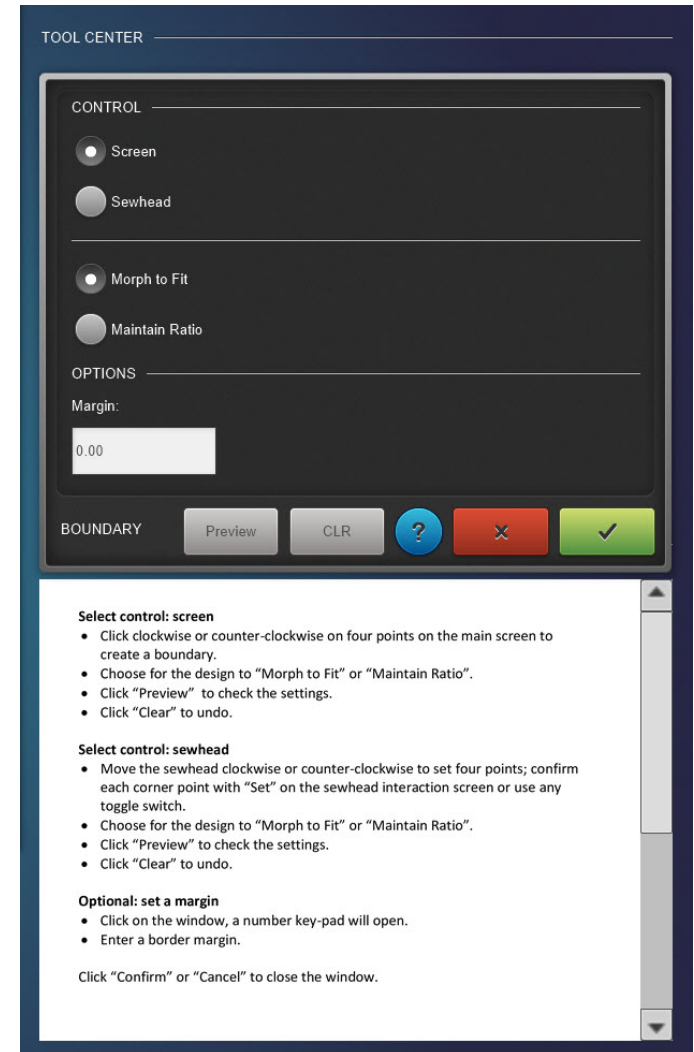
- When using **Preview**, you can view the changes to know if they are what you want.



CLR

- If the changes are not what are needed, then just click on the **Clear** button and make different changes.



- The **Help** button in the blue circle is where an explanation is to help with each of the options.



- 
 - Select or click to close without saving the changes made
- 
 - Select or click to close window with the changes saved.

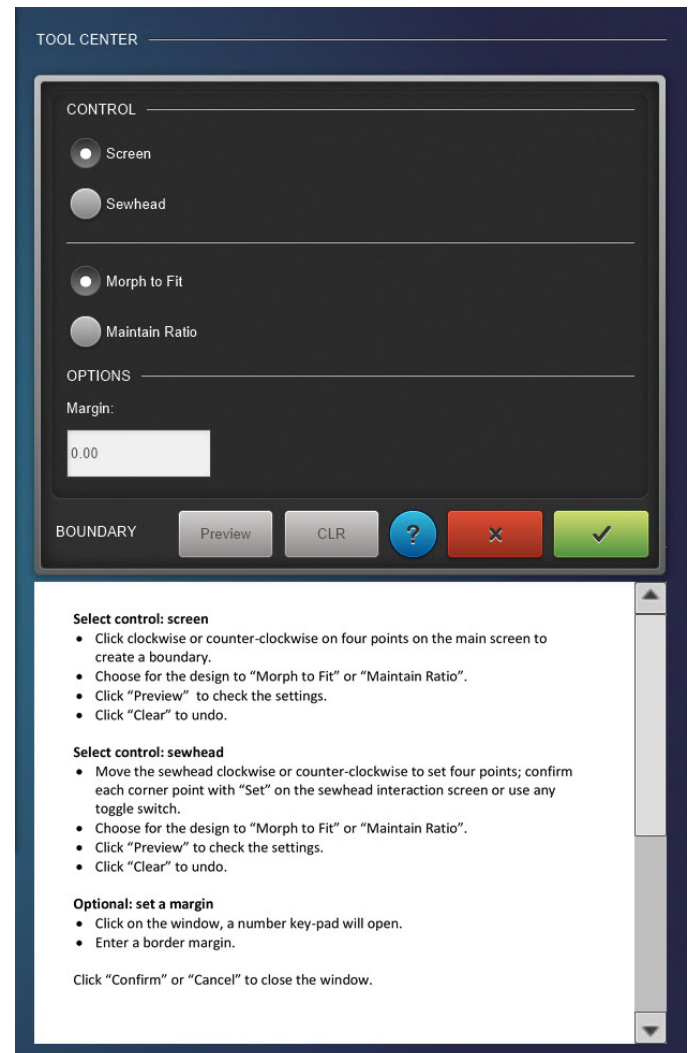
To use **Boundary**, the design must be selected. When selected it is **RED**. The design will change in size with both **Morph to Fit** and **Maintain Ratio** but will change in shape with **Morph to Fit**.

To use the **Sewhead** control there must be a **Safe Area** set.

This **Boundary** must have four points set. The first point will not be seen until the second point is set in order to see the line for the first side. If only three points are set the tool will not work. If more than four points are set only the first four will be recognized.

This placement method is used when the quilted project has blocks and the design needs to be placed in them. It can also be used for half square triangles but the full block is needed for the placement.

Boundary is also ideal for sashing with corner stones to get a perfect fit.



This is a link to the BERNINA WeAllSew blog. This post is about using Boundary in a small project but the information on placing the designs would be the same no matter the project.

<https://weallsew.com/q-matic-boundary-tip/>



When using **Markers** from the **Tool Center** you have to have a **Safe Area** set. **Markers** can only be set with the **Sewhead**.

- Connect Markers
 - The lines that connect the markers are now a stitch line and will need to be **Dequeue** if line is not to be stitched. The lines are created by clicking the first **Marker** then the next **Marker** and the next then the first **Marker** again. This will close the shape.
- Center
 - This will place a center red square into the center of the lines created by the connected **Markers**. To see the center, the **Markers** must be connected.



- - If the changes are not what are needed, then just click on the Clear button and make the changes.



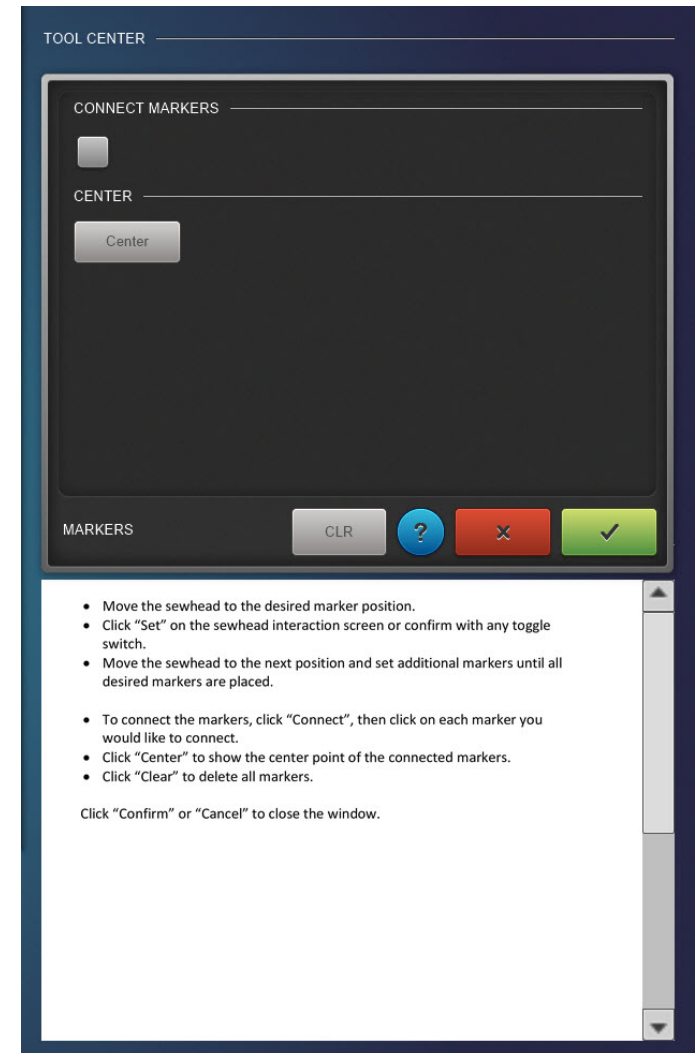
- - The Help button in the blue circle is where an explanation is to help with each of the options.



- - Select or click to close without saving the changes made



- - Select or click to close window with the changes saved



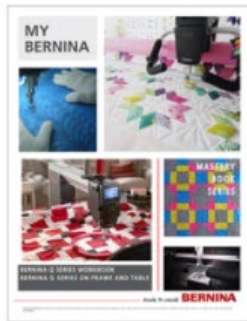
This is a link to a project on the BERNINA WeAllSew blog. This project uses Markers to place all of the designs used in this quilt. The information would be the same for any design being placed with Markers.

<https://weallsew.com/bernina-q-matic-markers-feature/>



Click here for the Mastery Workbooks: <https://www.bernina.com/en-US/Learn-Create-US/Mastery-Workbooks/Longarm-Quilting>

There are links to lots of videos in these workbooks to help with the information. Please download the workbooks and refer to them so the video links will work as they should.



Q Series

Learn to master your BERNINA Q Series as you work step by step through the My BERNINA Q Series Mastery Workbook activities.

LEARN MORE



Q Series Accessories

Learn to master your BERNINA Q Series Accessories as you work step by step through the activities in the My BERNINA Q Series Mastery Workbook.

LEARN MORE



Q-matic

Learn to master your BERNINA Q-matic as you work step by step through the activities in the My BERNINA Q-matic Mastery Workbook.

LEARN MORE