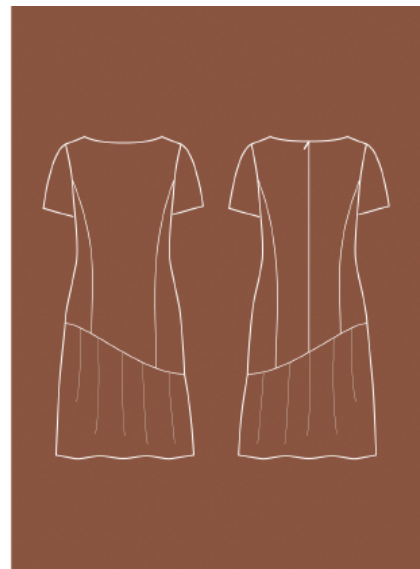


Dress "Viola"

Model 122-12

Size 36–48



PRINT THE CUT

1. Open the pattern PDF and set the control square to Page 1 with the setting "Original size" on DIN Print A4 paper (US-Letter). (Do not click on "Adjustment to page size"!))
2. Check the square – if it is 10×10 cm, print out the whole cut sheet.
3. Place all pages next to each other as indicated by the arrows and adhere them row by row along the boundary lines, then glue the rows together.
4. Compare the body measurements with the table measurements and cut out the cut parts in the appropriate size. (The overview of the cut parts is on the pattern sheet.)

Important: Instructions do not include seam allowances, unless otherwise indicated!

CUTTING

Cut the paper cutting piece 5 apart along the rear centre. Lay out all parts on the right side of one fabric layer.

- 1 1 × centre front part
- 2 1 × right side front part
- 3 1 × left side front part
- 4 1 × front facing on the fold
- 5 1 half of the centre back part each
- 6 1 × right side back part
- 7 1 × left side back part
- 8 2 × rear facing
- 9 2 × skirt part (mirror-inverted)
- 10 2 × sleeve

SUPPLIES

- 1.7–2.2 m imitation leather, 130 cm wide
- 1 seam-concealing (invisible) zip, 60 cm

OPTIONAL BERNINA ACCESSORIES

- [Invisible Zipper Foot #35](#)
- [Zigzag Foot with Non-Stick Sole #52](#)

INSTRUCTIONS

1. Sew the side front parts right side on right side on the centre front part and the side back parts on the centre back parts. Place the allowances towards the body centre, clip along the curves, if necessary, and topstitch them.
2. Sew in the zip between the centre back parts with the Foot #35. Close the remaining centre seam.
3. Close the shoulder seams of the dress and the facings. Sew the edges of the neckline right side on right side together up to approx. 3 cm in front of the rear centre.
4. Clip the allowances of the dress and the facing offset up to just close to the seam. Place the allowances in the facing and narrow-topstitch them up to approx. 5 cm



made to create **BERNINA**

INSTRUCTIONS

just in front of the zip. Fold over the narrow edge of the facing so that there is an opening of approx. 1 cm to the zip. Place the zip with allowance wrong side on wrong side on top of it. Sew the narrow edge of the facing and the allowance of the zip edge together on the zip. Sew on the facing completely and turn it inside out. Fix the facing on the shoulder seams.

5. Close the side seams of the dress and the skirt parts. Sew the skirt right side on right side on the upper part of the dress.
6. Close the sleeve seams. Gather the top shaping and sew in the sleeve. If you like, you can hem the dress and the sleeves, but the material falls more beautifully with open edges.



made to create **BERNINA**

LEATHER AND IMITATION LEATHER – THE RIGHT TOOLS

LEATHER AND IMITATION LEATHER CAN BE PROCESSED VERY WELL WITH A FEW TRICKS. THE ONLY PROBLEM IS THAT IT IS USUALLY NOT POSSIBLE TO UNDO THE STITCHES WITHOUT LEAVING VISIBLE HOLES. IF YOU SEW A GARMENT USING A NEW CUT, IT IS ESSENTIAL THAT YOU SEW A SAMPLE DRESS BEFOREHAND AND TRANSFER ANY CHANGES TO THE CUT.

The work succeeds best with good tools!

Every leather is different. Different stretchability, thickness or surface affect the feed. You can reach your goal safely with a Walking Foot #50 or the Dual Feed. The coated presser feet are also well-suited, for example the Straight Stitch Foot #52. If available, you can also use the Leather Roller Foot #55.

You can also vary the pressure of the presser foot which can make a significant difference.



Always use a quality thread! Bags or home decoration items look particularly professionally sewn when an extra strong sewing thread is used. The thread tension must be considerably increased, and a proportionally thicker needle must be used.

To avoid perforation of the material, the stitch length should not be less than 3 mm. For topstitching, we generally use stitch lengths of 3.5 to 4.

The thinner the leather, the thinner the needle. For soft clothing leather, a needle size of 70 to 80 is recommended. One exception is the "Extra Strong" sewing thread: use a needle of the size 90 to 100. A special leather needle is usually only required for very thick material.



Walking Foot #50



Straight Stitch Foot #52



Roller Foot #55