

Blouse "Merle"

Model 321-18

Size 36-48



PRINT THE CUT

1. Open the pattern PDF and set the control square to Page 1 with the setting "Original size" on DIN Print A4 paper (US-Letter). (Do not click on "Adjustment to page size"!))
2. Check the square – if it is 10×10 cm, print out the whole cut sheet.
3. Place all pages next to each other as indicated by the arrows and adhere them row by row along the boundary lines, then glue the rows together.
4. Compare the body measurements with the table measurements and cut out the cut parts in the appropriate size. (The overview of the cut parts is on the pattern sheet.)

Important: Instructions do not include seam allowances, unless otherwise indicated!

SUPPLIES

- 1.4 m printed rayon, 140 cm wide
- Woven interlining G 785 (Vlieseline)

OPTIONAL BERNINA ACCESSORIES

- Overlocker
- [Ruffler #86](#)

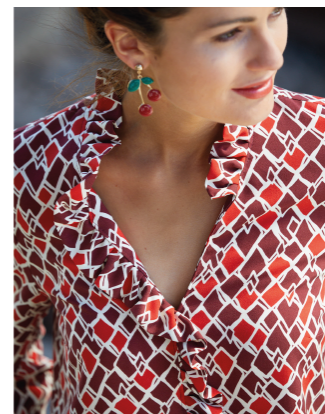
CUTTING

- 1 2× front part
- 2 1× facing on the fold
- 3 1× back part on the fold
- 4 2× sleeve

Frill: approx. 160 up to 200×8 cm, final width 4 cm.

INSTRUCTIONS

1. Close the dart on the front part. Close the shoulder seams. Iron the frill lengthwise along the fold. Attach the Ruffler Foot and set your machine: every 6th fold, straight stitch at a length of 3.5. Insert the open edge and sew the frills. Sew on the frill right side on right side along the front edge of the front part then along the neckline up to the neckline corner of the left front part. Close the front centre seam from the horizontal line.
2. Close the front centre seam of the facing. Sew the facing right side on right side along the neckline. Clip the allowances in the curves, turn the facing inwards and iron it. Narrow-topstitch the front centre seam and the neckline continuously.
3. Close the side and sleeve seams. Slightly gather the top shaping and sew in the sleeve. Hem the blouse.



made to create **BERNINA**