

Dress "Klio"

Model 223-19

Size 36-48



PRINT THE CUT

1. Open the pattern PDF and set the control square to Page 1 with the setting "Original size" on DIN Print A4 paper (US-Letter). (Do not click on "Adjustment to page size"!))
2. Check the square – if it is 10×10 cm, print out the whole cut sheet.
3. Place all pages next to each other as indicated by the arrows and adhere them row by row along the boundary lines, then glue the rows together.
4. Compare the body measurements with the table measurements and cut out the cut parts in the appropriate size. (The overview of the cut parts is on the pattern sheet.)

Important: Instructions do not include seam allowances, unless otherwise indicated!

SUPPLIES

- 1.1–1.6 m tencel, 140 cm wide
- Woven interlining G 710 (Vlieseline)
- 1 seam concealing (invisible) zip, 60 cm long
- Hotfix rivets
- [Edgestitch Foot #10](#)
- [Invisible Zipper Foot #35](#)

CUTTING

- 1 2× front part
- 1 2× front facing
- 2 2× back part
- 2 2× rear facing
- 3 2× sleeve facing
- 4 1× decorative part on the fold

INSTRUCTIONS

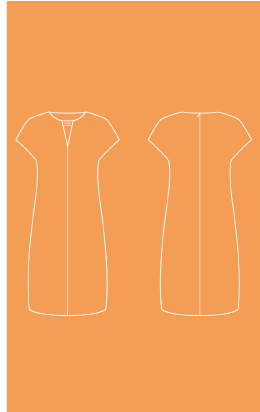
1. Iron interlining on the facings and the decorative part and let them cool off thoroughly. Close the front centre seam up to the marking. Close the rear centre seam below the slit marking. Sew in the zip along the rear centre with the Foot #35.
2. Place the decorative part right sides together in the fold and stitch the longer edge, turn it over and iron it. Place the hotfix rivets as desired and iron them on according to the instructions.
3. Close the front centre seam of the facings. Close the shoulder seams of the dress and the facings. Sew the neckline edges of the facing and the dress right side on right side together, leaving the V-neck below the corners between the markings at the front open. Cut back and clip the allowances and turn the facing inwards.
4. Fold in the narrow edges of the facing along the zip and sew on the lower corners. Fix the neckline facing at the shoulder seams and on the front part below the V-neck.
5. Push the allowances of the decorative part into the openings at the V-neck and pin them in place. Narrow-topstitch the edges of the neckline all around, also stitching the decorative part.



made to create **BERNINA**

INSTRUCTIONS

6. Sew the sleeve facings right side on right side along the edges of the armholes. Clip the allowances in the curves and iron the facings towards the wrong side. Close the side seams and finish them individually. Iron the allowances apart. Pin the lower edges of the sleeve facings in place and topstitch them all around at a generous width. Fold the allowances of the armhole to the back and fix them with a few stitches. Hem the dress.



made to create **BERNINA**