

# Steph's Easter Rope Bowls!

Use with any zig zag enabled foot!

- Great to store all your Easter treats in!
- Handy storage after Easter for all your sewings bits and bobs!
- Get creative and make a range of different colours, shapes and sizes to suit your room!
- Why not make a coaster? You can even paint the rope too!



## Materials and things you'll need:

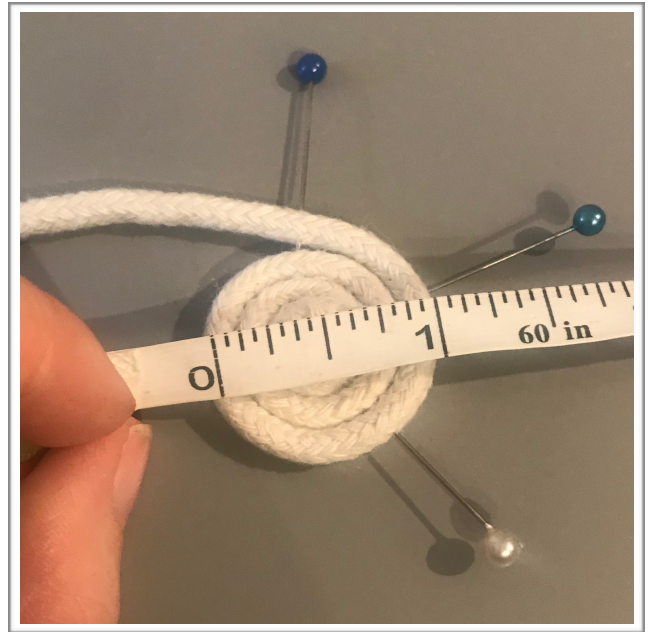
- Cotton cord or clothesline. I'm using a 4mm cotton clothesline.
- Thread - match the colour with the room, use a fun contrasting thread or why not a variegated thread?
- Scissors
- Pins
- Fabric scraps, paint/inks - optional
- Use one of your feet in your stash - whether it's the #1, the open toe foot #20 or any other. As long as you can do zigzags!
- Bernina machine!



## Constructing the basic shape:

Start by making a clean cut to the start of your cord so it will coil more neatly. Tightly start to coil the cord round on itself. You will need to do a few rotations and use pins to help it stay in place.

Coil it enough so it is roughly an inch in diameter.



Thread your machine.

Remember that both sides are important. Think about what colour you want it to be on the inside of the bowl and the outside.

The top thread will be the inside of the bowl, the bobbin thread is the outside.

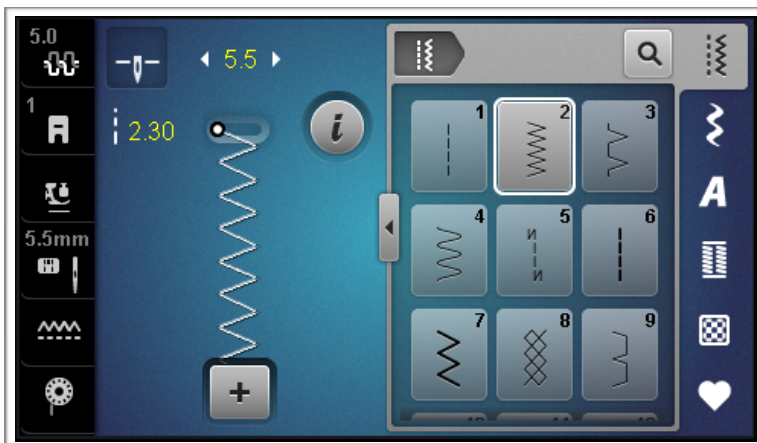
Set your machine for a zig zag stitch.

This can be dependent on the width of your machine and the cord that you are using. You need to make sure that the stitches are catching the cord. It is also dependent on personal preference.

I've chosen a length of 2.30 and a width of 5.5.

Have the machine set so the needle stops in the down position. This will help you to pivot.

\*If your machine is set to do a securing stitch, turn this off.







Raise your bobbin thread to start, this will make sure that you have a clean start. Do a few stitches, I'd advise going slow, especially so that you can manipulate the coil. You may want to reverse over the first few stitches to secure.

As you move around, keep the excess cord straight towards you and the coil to the left. Like a 'q' shape. As you stitch, bring the coiled section towards the excess cord.

When you need to pivot, stop with the needle on the inside of the coil like shown in the picture.

Continue until it is the size of the base that you want.

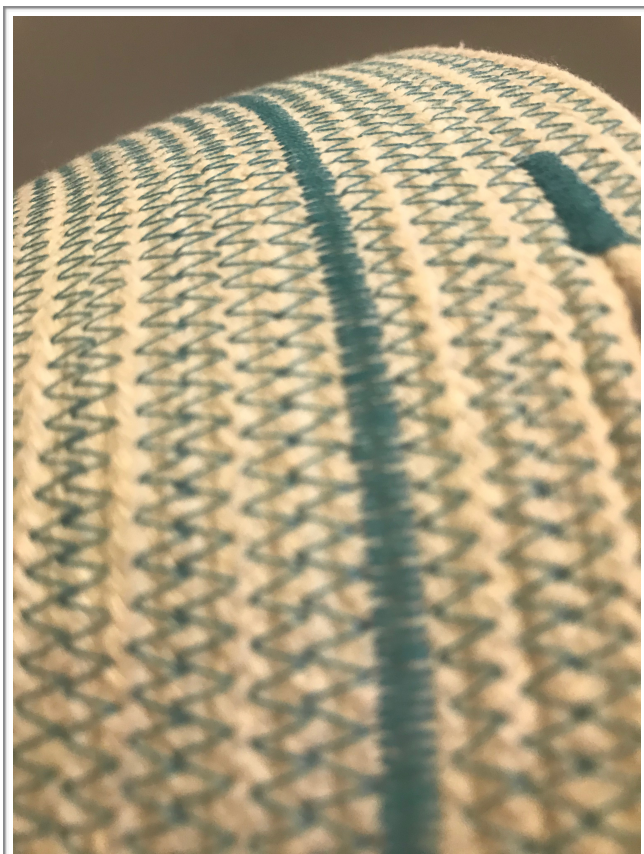
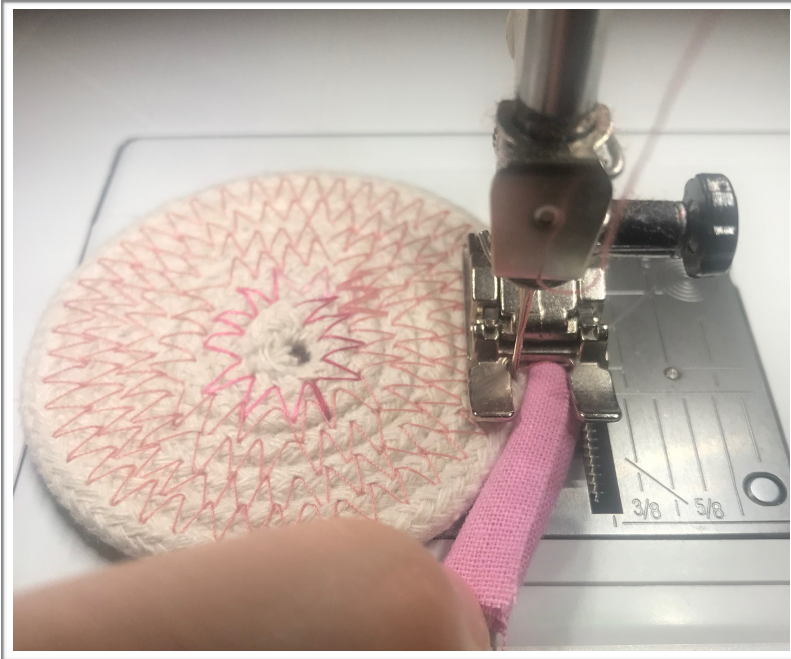
To shape the bowl, hold the base up to the head end of the machine. Keep sewing and you will see that the bowl will start to take shape.





## Decorative Features:

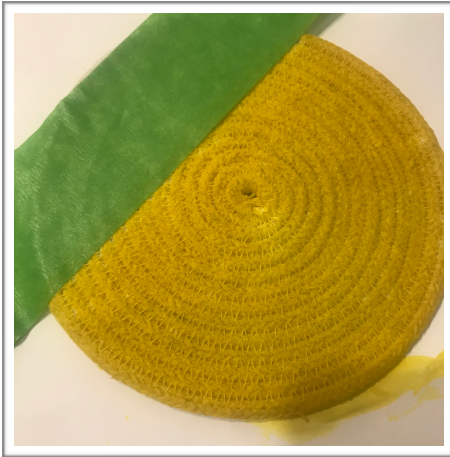
One way to decorate your bowl would be to cut some strips of fabric and wrap around the cord as you sew. This can be a little fiddly! So please watch your fingers.



Another way to decorate your bowl is to decrease the stitch length to make the stitches closer together.







Use paint or inks to add colour.

Frog tape was used to give an abstract feel to this coaster.

A neutral fine thread was used so that it would not take away from the paint.

With a fine paintbrush you could even do some decorative detailing!

## Finishing:

Create a handle for your basket by pausing your stitches.

Secure them by shortening the stitch length to a satin stitch and using the reverse.

Cut the thread. Remove the bowl from the machine and create a gap that is big enough to put your hand through to grip. Pin in place.

Position the bowl in place and secure the start of the stitch as you ended in with the satin stitch.

Increase your length to the previous setting and continue around, making note when you are an equal distance on the other side to create your second handle. Repeat again for the handle.

Continue to sew around until you are happy with the thickness of your handle. I chose to have three rounds of cord for my handles.

To finish, satin stitch and reverse to secure, then cut the thread. I cut the cord to the desired length, wrapping it tightly around the handle and then through itself. To finish, stitch with a narrow satin stitch on the width of the cord about an inch or so away from the end, then gently use your fingers to fray.





Another way to finish is to secure your stitches by satin stitching or reversing.

Next, trim the cord to the desired length and place back on itself. Stitch again too secure.

Now to fill with lots of  
Easter treats!

