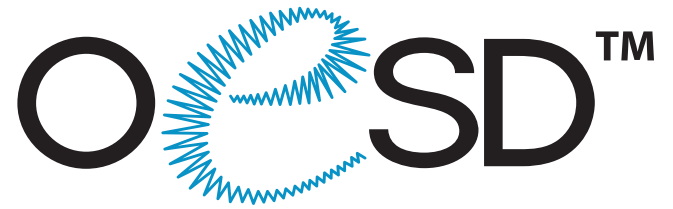


#12743



# Name Drop Luggage Tags



Note: Some designs in this collection may have been created using unique special stitches and/or techniques. To preserve design integrity when rescaling or rotating designs in your software, always rescale or rotate designs using the handles directly on-screen.

FSL = Freestanding Lace FSA = Freestanding Applique

## 12743-04 Name Drop Baseball Luggage Tag FSA

4.65 X 4.63 in. 118.11 X 117.60 mm 14,471 St.



1.	Front Fabric Placement Stitch .....	0015
2.	Front Fabric Cut Line and Tackdown .....	0015
3.	White Detail .....	0015
4.	Gray Detail .....	0105
5.	Light Blue Detail .....	3730
6.	Dark Red Detail .....	2101
7.	Black Detail .....	0020
8.	Back Fabric Cut Line and Tackdown .....	1704
9.	Cover Stitch and Detail .....	1704

## 12743-07 Name Drop Floral Luggage Tag FSA

2.82 X 5.38 in. 71.63 X 136.65 mm 19,657 St.



1.	Front Fabric Placement Stitch .....	5740
2.	Front Fabric Cut Line and Tackdown .....	5740
3.	Mint Detail .....	5740
4.	Apple Green Detail .....	5730
5.	Azalea Pink Detail .....	2560
6.	White Detail .....	0015
7.	Tulip Pink Detail .....	2155
8.	Dark Pink Detail .....	2532
9.	Black Detail .....	0020
10.	Back Fabric Cut Line and Tackdown .....	0352
11.	Cover Stitch and Detail .....	0352

Note: Some designs in this collection may have been created using unique special stitches and/or techniques. To preserve design integrity when rescaling or rotating designs in your software, always rescale or rotate designs using the handles directly on-screen.

FSL = Freestanding Lace FSA = Freestanding Applique

## 12743-09 Name Drop Diamonds Luggage Tag FSA

2.82 X 5.24 in. 71.63 X 133.10 mm 17,137 St.



1.	Front Fabric Placement Stitch .....	3510
2.	Front Fabric Cut Line and Tackdown.....	3510
3.	Electric Blue Detail .....	3510
4.	Cornflower Blue Detail.....	3713
5.	Crystal Blue Detail.....	3910
6.	Dark Green Detail.....	5613
7.	Erin Green Detail.....	5912
8.	Yellow Detail .....	0630
9.	Orange Detail .....	1030
10.	Pink Detail .....	1840
11.	Bright Ruby Detail .....	2300
12.	Purple Detail.....	3030
13.	Back Fabric Cut Line and Tackdown .....	0020
14.	Cover Stitch and Detail.....	0020

These designs are part of the collection Name Drop Luggage Bag #12743 which includes 12 unique designs to personalize your luggage, your golf bag or anything you need to put a name on. This collection of easy, in the hoop designs features beautiful geometric patterns, floral motifs, and sports themes so you can craft the perfect tag for anyone!

# MATERIALS



## Stabilizer

- OEESD AquaMesh WashAway stabilizer
- OEESD Fiber Form Craft Interfacing

## Fabric/Notions

- 2 Fabric scraps 1" larger than design
- *Optional* - 505 Temporary Adhesive Spray
- *Optional* - OEESD Expert Embroidery Tape TearAway or WashAway

## Isacord Thread Colors

0015 White	0945 Pine Park	2560 Azalea Pink
0020 Black	1030 Passion Fruit	2704 Purple Passion
0105 Ash Mist	1200 Sunset Orange	2764 Violet
0352 Marsh	1704 Candy Apple	3030 Amethyst
0454 Olive Drab	1840 Corsage	3040 Lavender
0552 Flax	2101 Country Red	3130 Dawn of Violet
0630 Buttercup	2155 Pink Tulip	3274 Battleship Gray
0700 Bright Yellow	2300 Bright Ruby	3510 Electric Blue
0824 Liberty Gold	2521 Fuschia	3713 Cornflower Blue
0853 Pecan	2532 Pretty in Pink	3730 Something Blue

# INSTRUCTIONS

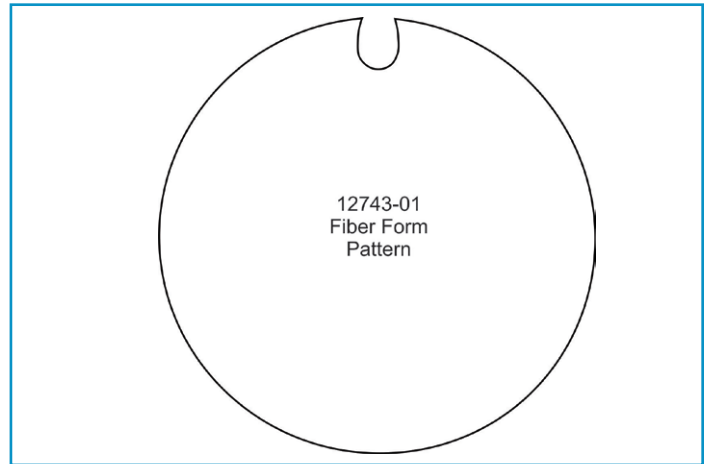


## STEP 1

Print out the necessary Fiber Form pattern(s) from the PDF. Follow printing instructions on page 14.

Lightly spray the wrong side of the pattern piece(s) with temporary adhesive spray and allow it to set for a few minutes. Or, pin pattern to Fiber Form in lieu of spraying.

Place pattern piece(s) on the Fiber Form and carefully cut out. Remove paper pattern. Or, use the included .SVG file(s) to cut out the Fiber Form on a digital cutting machine.



## STEP 2

If you choose to add a name to the luggage tags, use your embroidery design software to insert the name before transferring the file to the machine.

If your embroidery machine is capable of adding lettering, refer to your machine's manual. (Ideally the name should be inserted before the back fabric is added to give a finished look.)

## STEP 3

Hoop two layers of OEESD AquaMesh stabilizer.

Stitch the placement stitch on your hooped fabric.





# INSTRUCTIONS



## STEP 4

Spray Fiber Form piece with temporary adhesive spray. Or, tape pattern in place with Expert Embroidery Tape.

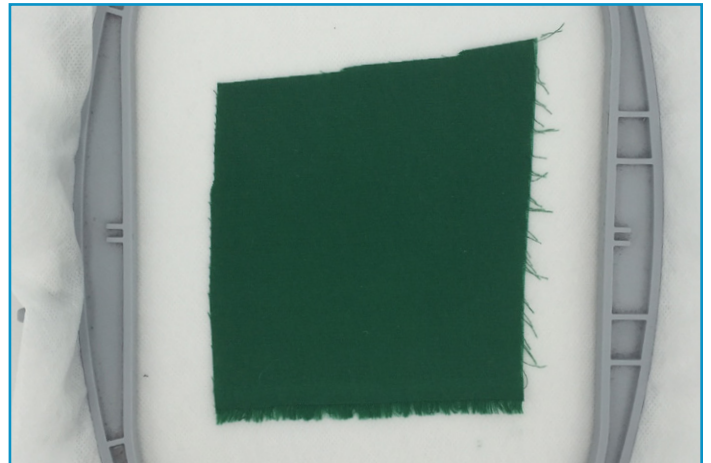
Place Fiber Form inside the placement stitch, so that it completely covers the placement stitch.



## STEP 5

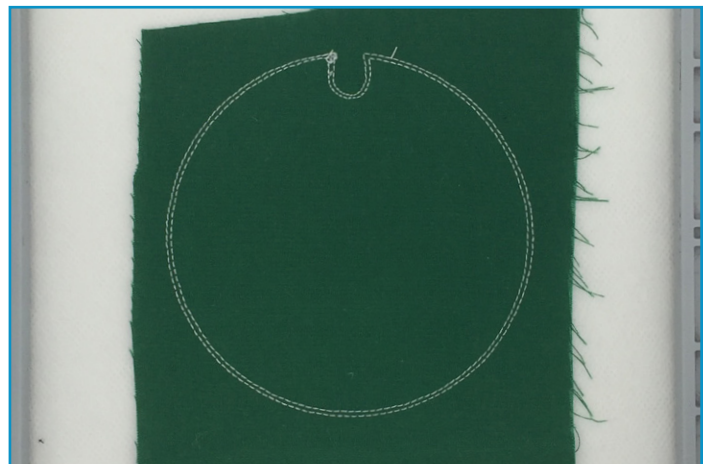
Spray wrong side of fabric with temporary adhesive spray. Or, tape fabric in place with Expert Embroidery Tape.

Place fabric over Fiber Form, making sure fabric completely covers the Fiber Form.



## STEP 6

Stitch the *Front Fabric Cut Line & Tackdown* stitch.

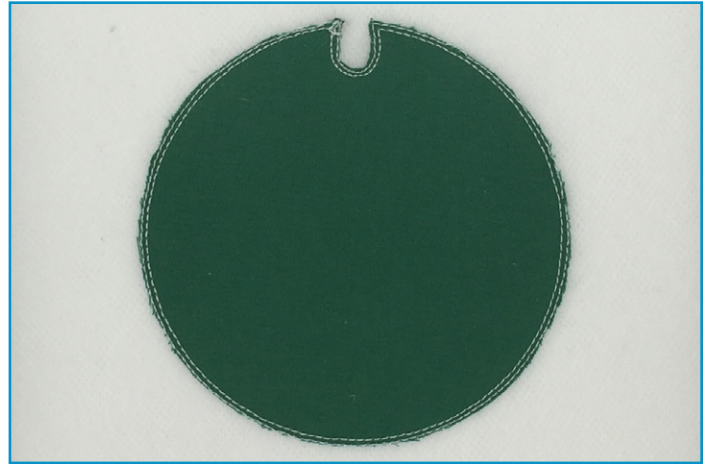


# INSTRUCTIONS



## STEP 7

Carefully cut away the excess applique fabric very close to the stitching line.



## STEP 8

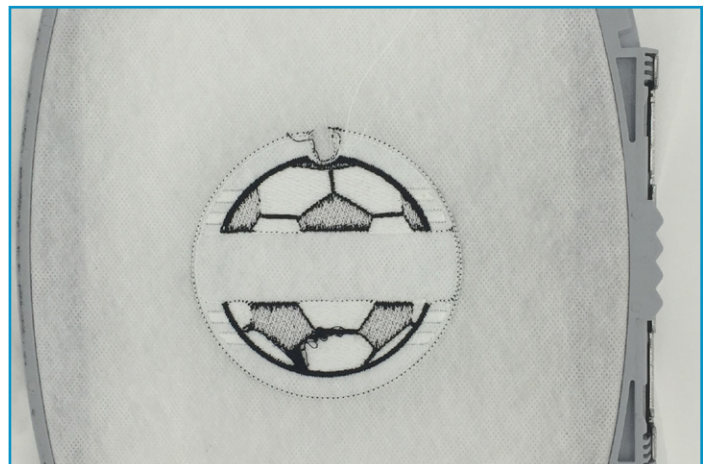
Continue stitching the design.

Stop machine, BEFORE stitching *Back Fabric Cut Line and Tackdown*.



## STEP 9

Remove hoop from machine and turn hoop to back side.



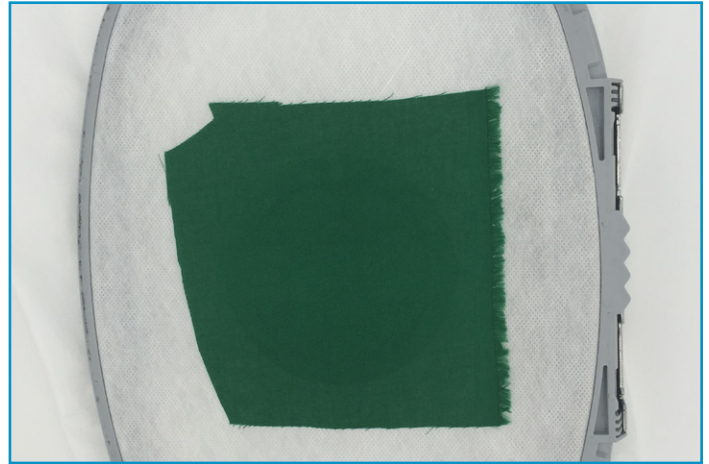
# INSTRUCTIONS



## STEP 10

Spray wrong side of fabric with temporary spray adhesive. Or, tape fabric in place with Expert Embroidery Tape.

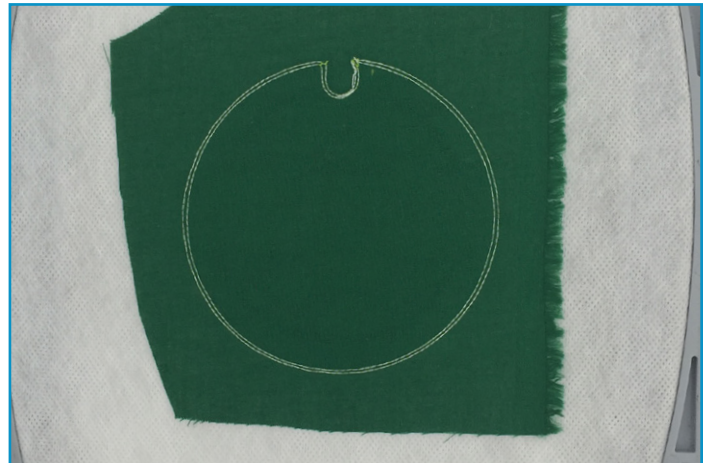
Place fabric over back of design, making sure fabric completely covers the design.



## STEP 11

Replace hoop onto machine.

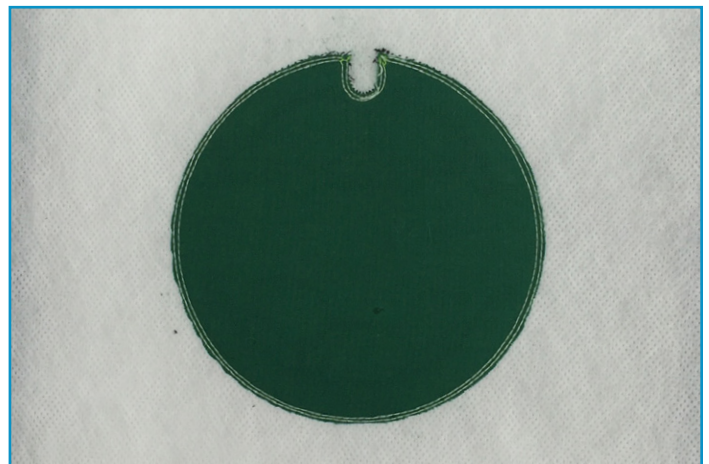
Stitch the next color, *Back Fabric Cut Line and Tackdown*.



## STEP 12

Remove hoop from machine and turn hoop to back side.

Carefully cut away the excess applique fabric.





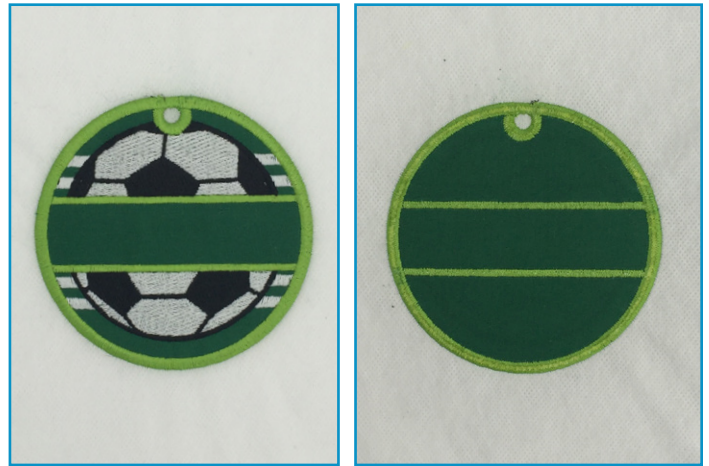
# INSTRUCTIONS



## STEP 13

Continue stitching design. **STOP** before last color change.

Change bobbin thread to match the *Cover Stitch and Detail* thread color. Finish stitching design.



## STEP 14

Remove the hoop from the machine and the design from the hoop.

Trim excess stabilizer from the design about ¼" from satin stitching.



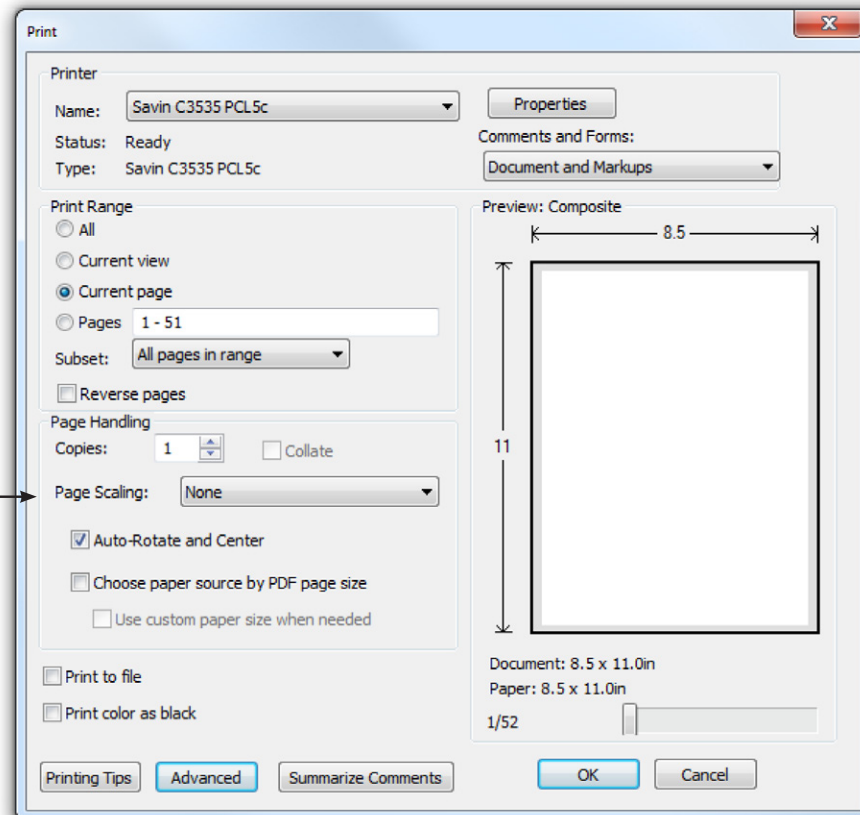
## STEP 15

Rinse away remaining stabilizer and allow it to dry face down to prevent curling.



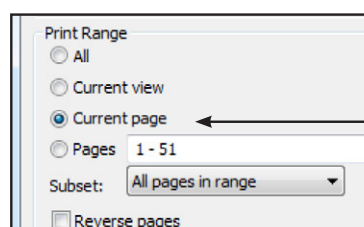
## ATTENTION

When printing this document, any page scaling or page fitting options in your print dialog box must be turned OFF or set to NONE so that your files will print out at their actual size. Images not printed at actual size will not function as intended.



## TO SAVE PAPER

Only print the desired image by navigating to the image's page, go to File > Print and select "Current page" in the print dialog box. Repeat for each desired image.



12743-04  
Fiber Form  
Pattern



12743-07  
Fiber Form  
Pattern

