

Note: Some designs in this collection may have been created using unique special stitches and/or techniques. To preserve design integrity when rescaling or rotating designs in your software, always rescale or rotate designs using the handles directly on-screen.



12621-05 Sepia Petals Quilt Label

6.10 X 4.10 in.
154.94 X 104.14 mm
5,997 St.



12621-19 Efflorescence Quilt Label

6.10 X 4.10 in.
154.94 X 104.14 mm
8,509 St.

These designs are part of the collection Memorable Quilt Labels #12621.

Remembering who made a quilt and what occasion inspired it can transform a quilt from a textile to a treasure. Use these easy to make quilt labels to insure a quilt's history is maintained in elegant fashion.

Each label uses a design from an OESD collection of the same name, but are versatile enough to use with any of your quilt projects.





Memorable Quilt Labels

#12621

Listings below indicate color sample, stitching order and suggested thread color number. Most numbers indicate Isacord thread. Colors beginning with 20501 refer to YLI Fine Metallics, 7 refer to Yenmet Metallic, 8 refer to YLI Variations Variegated Thread and 9 refer to Isacord Multicolor Variegated.

12621-02 Contour Appliqué Quilt Label

■	1.Label Placement Stitch.....	0020
■	2.Tackdown	0020
■	3.Orange Linework.....	0811
■	4.Blue Linework.....	4952
■	5.Red Linework	1921
■	6.Lines.....	4952
■	7.Seam.....	0020

12621-19 Efflorescence Quilt Label

□	1.Label Placement Stitch.....	0015
□	2.Tackdown	0015
■	3.Gold Detail.....	0721
■	4.Blue Detail.....	4620
■	5.Green Detail	0352
□	6.Gray Detail	0152
■	7.Tan Detail	0672
■	8.Lines.....	4620
□	9.Seam.....	0015

Supplies

- Quilt Label Design
- 6" x 8" piece of fabric
- OESD PolyMesh Stabilizer
- 505 Temporary Adhesive Spray
- Isacord thread

OESD Bobbin Thread

1. Hoop a piece of OESD PolyMesh Stabilizer. **Photo 01**
2. Stitch the first color change, placement line, on the PolyMesh stabilizer. **Photo 02.**
3. Lightly spray the back of the 6" x 8" piece of fabric with 505 Temporary Adhesive Spray.
4. Smooth the fabric onto the stabilizer, centering it over the placement line. **Photo 03.**
5. Stitch the second color change, the tackdown stitch. **Photo 04.**
6. Stitch the remaining color changes, STOPPING before the last color change. **Photo 05.**
7. Place a 6" x 8" piece of OESD PolyMesh stabilizer on top of the embroidered design. If desired, secure with tape at edges. **Photo 06.**
8. Stitch the final color change, the seam stitch. Remove the project from the hoop. **Photo 07.**
9. Trim all layers to 1/4" from the seam line. **Photo 08.**
10. Clip corners. **Photo 09.**
11. Cut a slit in the top PolyMesh layer and turn project through opening. **Photo 10.**
12. Use a point turner to smooth edges and corners of quilt label. Pin label to back of quilt and whip-stitch in place. **Photo 11.**



Photo 1

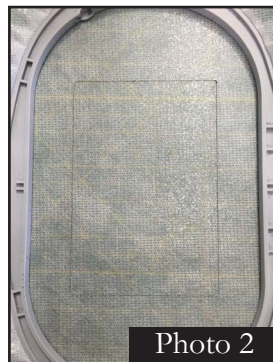


Photo 2



Photo 3

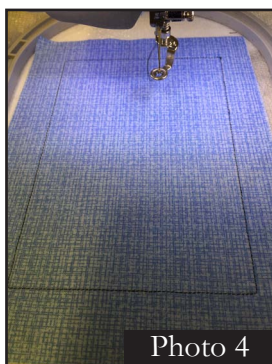


Photo 4



Photo 5

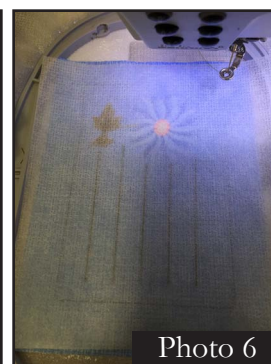


Photo 6



Photo 7



Photo 8



Photo 9

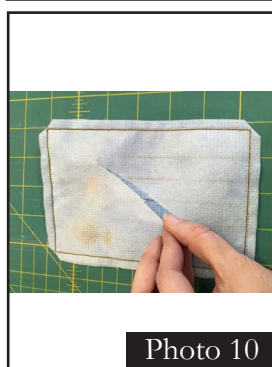


Photo 10



Photo 11