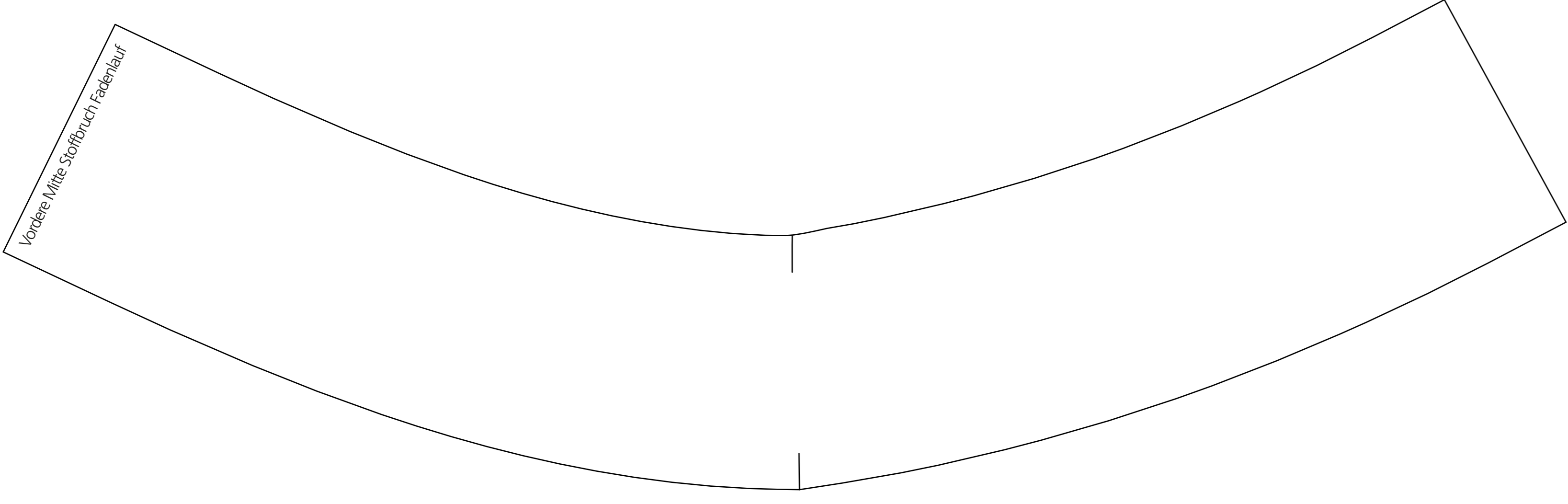
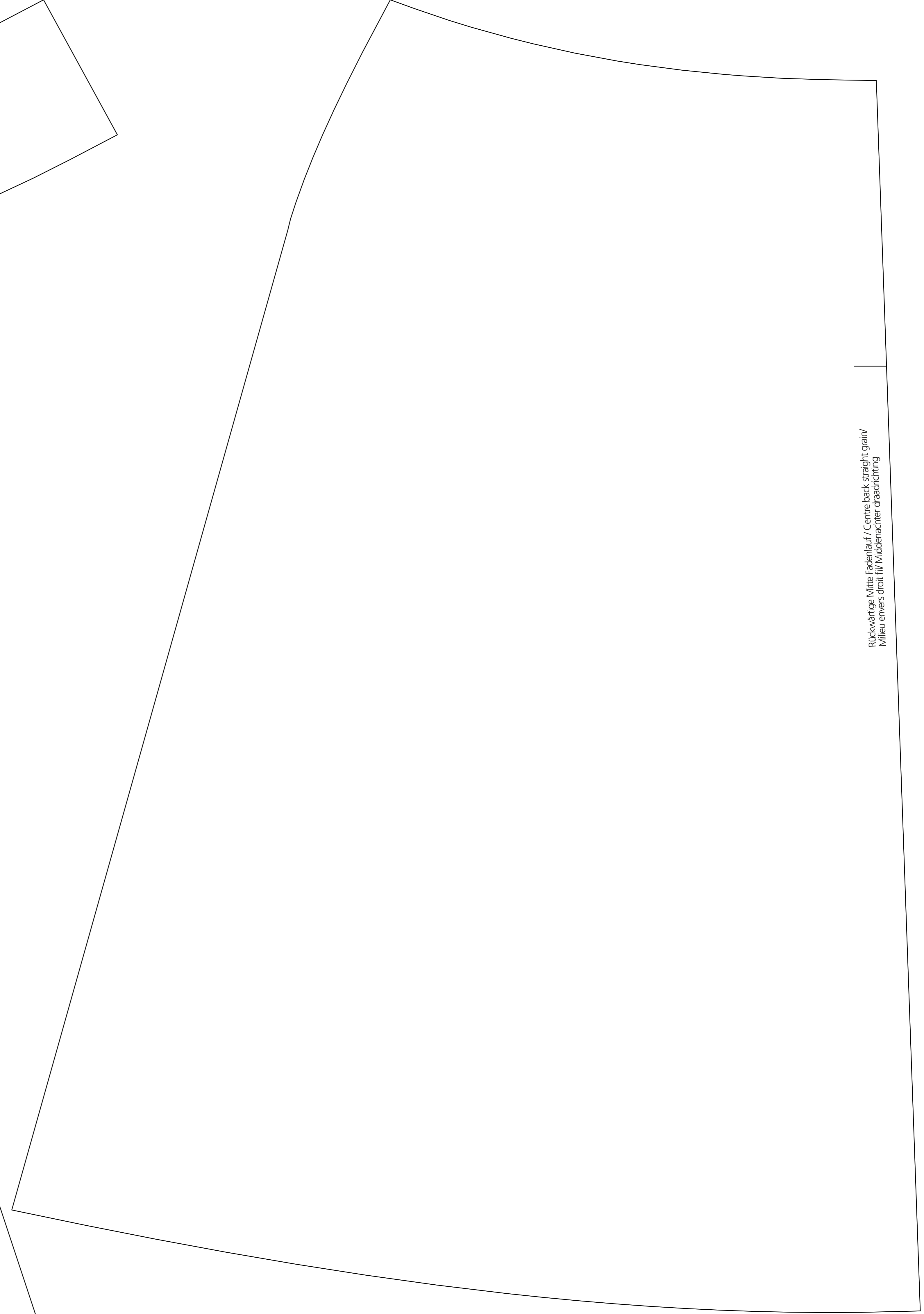


Vordere Mitte Stoffbruch Fadenlauf / Centre front fold straight grain / Milieu endroit pli droit fil / Middenvoor stofkouw draadrichting



Vordere Mitte Stoffbruch Fadenlauf



Rückvordere Mitte Fadenlauf / Centre back straight grain / Milieu envers droit fil / Middenachter draadrichting