

BERNINA E 16 User Interface V 1.04.97 - Update Release Notes

October 5, 2015

The update is intended for installation with the currently released version installed on the PC.

The update may be done online in which an internet connection is required.

The update will also be available for download on bernina.com >Products>Multi-needle Embroidery>BERNINA E 16 > Support >E 16 Firmware Update.

This update is a full version of software and may also be used for a new installation or- re-installation of the BERNINA E 16 Software.

Contents

- What's New
- Update Process
- Support/Questions

What's New

V1.04.97

- Check For Updates- if updates are available, the software will automatically display an update notification. Internet connection is required for this feature.
 - Update process improvements
- By-pass for "Trim Required" machine status. Should you encounter a "Trim Required" message, it may be by-passed using the keypad command of Adjustment Key + Hoop Key.
- 3D Puff – there are dual buttons for the 3D Effect application. There is now an option for 2mm thinner foam and 3mm thicker foam.
- Adjustment of thread break sensor readings to reduce false upper and lower thread breaks.
- Bobbin case recommendation change. There has been a change in the construction and location of the pigtail angle on the new E 16 bobbin case.
- Single Stitch Filtering- a single stitch that is flanked by jump stitches will now be filtered out to avoid needle breaks.
- Addition of the following Mighty hoop
 - 7.25" x 7.25"- 18.4cmX 18.4cm
- Compatibility with Windows 10

Update Process

To Update the BERNINA E 16 UI / OS :

1. Make sure that you have Internet Connection to update Online.
2. Attach the BERNINA E 16 dongle.
3. Check to insure that the Emergency Stop on the Control Panel is released.
4. Open the BERNINA UI. When the “?” question mark appears on the screen, turn on the machine.

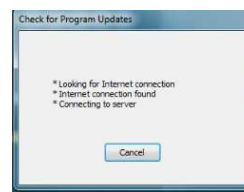
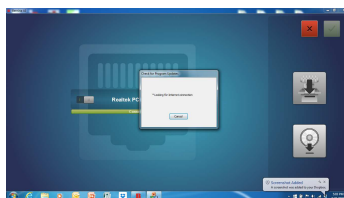


5. Proceed to the Advanced Setting Screen.

6. Click on the Update Icon



7. Follow the instructions on screen



8. Machine is ready for stitching.

Support/Questions

Contact your local BERNINA E Series Multi-needle Embroidery Dealership.

Support also available on bernina.com > Contact Us> BERNINA Help Center > E 16 Multi-needle Embroidery> Submit a Request