

Skirt "Daisy"

Model 121-17

Size 36-48



PRINT THE CUT

1. Open the pattern PDF and set the control square to Page 1 with the setting "Original size" on DIN Print A4 paper (US-Letter). (Do not click on "Adjustment to page size"!))
2. Check the square – if it is 10×10 cm, print out the whole cut sheet.
3. Place all pages next to each other as indicated by the arrows and adhere them row by row along the boundary lines, then glue the rows together.
4. Compare the body measurements with the table measurements and cut out the cut parts in the appropriate size. (The overview of the cut parts is on the pattern sheet.)

Important: Instructions do not include seam allowances, unless otherwise indicated!

SUPPLIES

- 1.3–1.8 m rayon crepe, 140 cm wide
- 7 buttons, 12 mm

OPTIONAL BERNINA ACCESSORIES

- [Button Sew-On Foot #18](#)

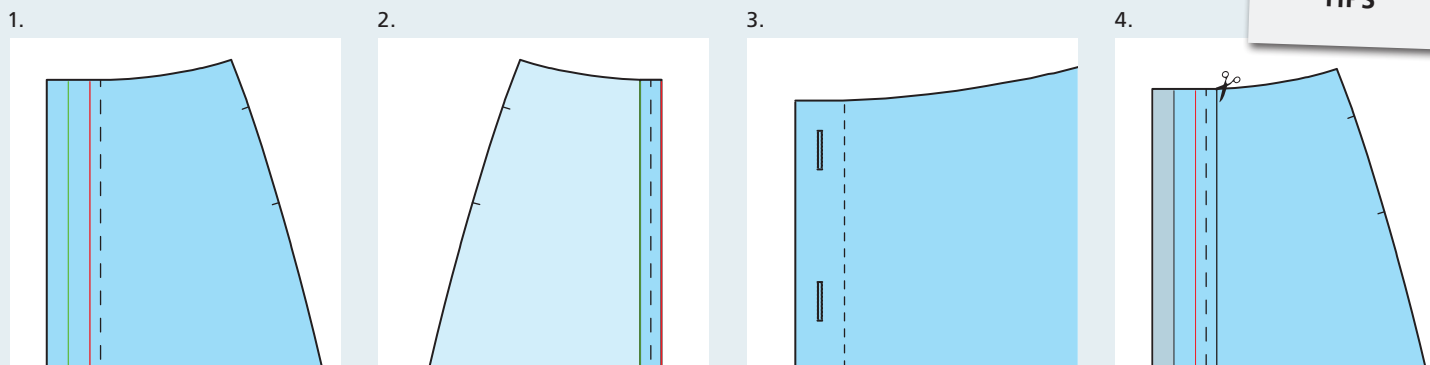
CUTTING

- 1 2× front part
- 2 4× pocket bag
- 3 1× back part on the fold
- 4 1× waistband on the fold

INSTRUCTIONS

1. Close the darts on the back part. Close the side seams above and below the pocket mouths and continue sewing between the snaps with long stitches.
2. **Sewing the seam pockets:** Sew the pocket bag right side on right side on the allowances of the front and the back parts. Clip the allowances on the front part below the pocket mouth vertically up to the seam. Finish the allowances of the skirt and the pockets up to the cut. Iron the pocket bags inside the front part, close them with pins and sew them together. Finish the pocket bag. Iron the remaining seam allowances inside the back part and finish them. Undo the stitches along the pocket mouth. For additional stability, a bartack can be sewn across the side seam at the top and bottom of the pocket mouth through all layers of fabric.
3. Iron the button border inwards once along the fold line and once along the line "front edge". Narrow-topstitch the loose long edge. Sew the waistband right side on right side on the skirt. Sew along the narrow edges. Topstitch the loose edge with the allowance folded over from the right in the seam shadow.
4. Sew a buttonhole across the waistband (right side). Sew another 6 buttonholes lengthwise at a distance of approx. 8 cm starting from approx. 1.5 cm below the waistband. Sew on the buttons on the opposite side. Hem the skirt.





BUTTON BORDERS

BUTTON BORDERS ARE MORE UP TO DATE THAN EVER AND A LOVELY ALTERNATIVE TO ZIPS.

In the illustrations, the right side of the fabric is shown darker, the wrong side lighter.

The cut button border

In this issue we have designed the cuts of the dress 121-20 and the skirt 121-17 with a cut button border.

This is the fastest and easiest way to sew a button border. Depending on the fabric used there is no need to iron on a stabiliser. For very thick fabrics, the second weft is omitted (in illustration 1 the area to the left of the green line) and iron-on stabiliser is used instead.

The top edges of the button border disappear in the collar or the waistband and the hems are finished, ironed up and topstitched.

No allowance needs to be added at the outer edge of the front cut (ill. 1 left edge). Fold the front part inwards twice – once at the fold line (green) and again at the “front edge” line (red). Iron the fold edges. Narrow-topstitch the long edge (ill. 2). The buttonholes are generally worked in lengthwise (ill. 3).

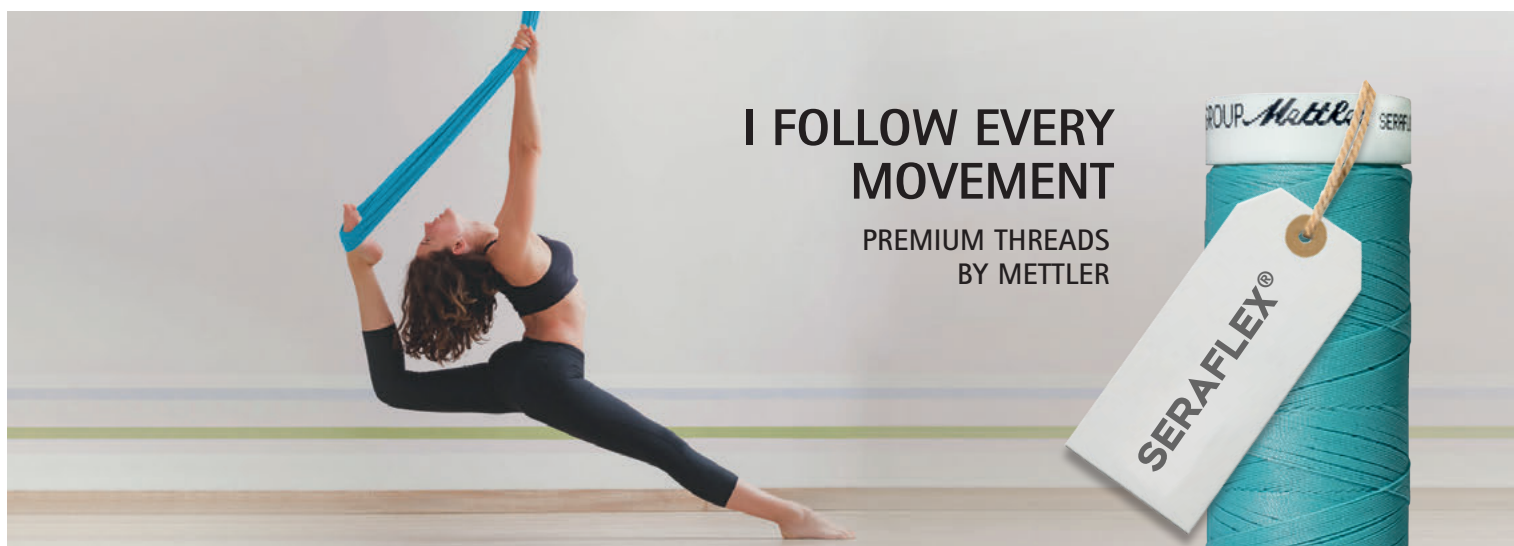
The extra button border

It is made of a separate cut piece, such as on the blouse 121-12, and is sewn right side on right side to the front part. This makes sense if, for example, the fabric width is not large enough for a cut button border or if special effects, such as a different stripe pattern, are to be achieved. The extra button border is also an advantage if the upper and lower edges cannot disappear into the hem, the collar, or the waistband. To do this, finish the upper and lower edges of the button border by sewing and turning over right away after having sewn the button border on the front part.

To change a cut with cut facing into a cut with extra button border, the paper cutting pattern can easily be changed. Measure the distance from the “front edge” (ill. red line 4) to the “centre front” (ill. dashed line 4). Draw a parallel of this width on the other side of the centre front. Cut the paper there. The detached strip forms the separate button border. The weft (shown in grey) is then dispensed with, it is also cut off.

Fitting button sizes

A button border should always be about twice as wide as the button. If buttons are used which are at least 2 mm larger or smaller than those indicated in the section, the distance from the centre front to the front edge and the facing width should be adjusted. The position of the front centre always remains unchanged!



I FOLLOW EVERY
MOVEMENT

PREMIUM THREADS
BY METTLER

Fantastic - elastic

SERAFLEX® is the perfect sewing thread for all elastic fabrics. It makes especially the straight stitch extremely stretchable – use SERAFLEX® and achieve a double seam elasticity compared to seams with conventional sewing thread!

Excellently suitable for sportswear, outdoor, women's, men's and children's clothing as well as for lingerie and underwear.



www.amann-mettler.com

Mettler®

Thread.Colour.Imagination.