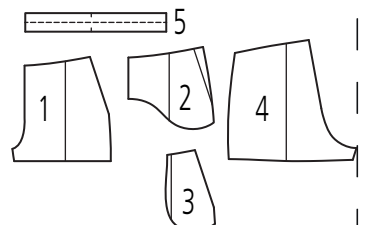
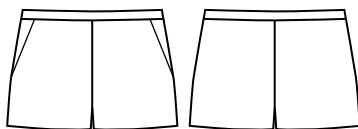


10 x 10 cm

4 x 4 Inch

1A

# Shorts „Romy“ 220-28



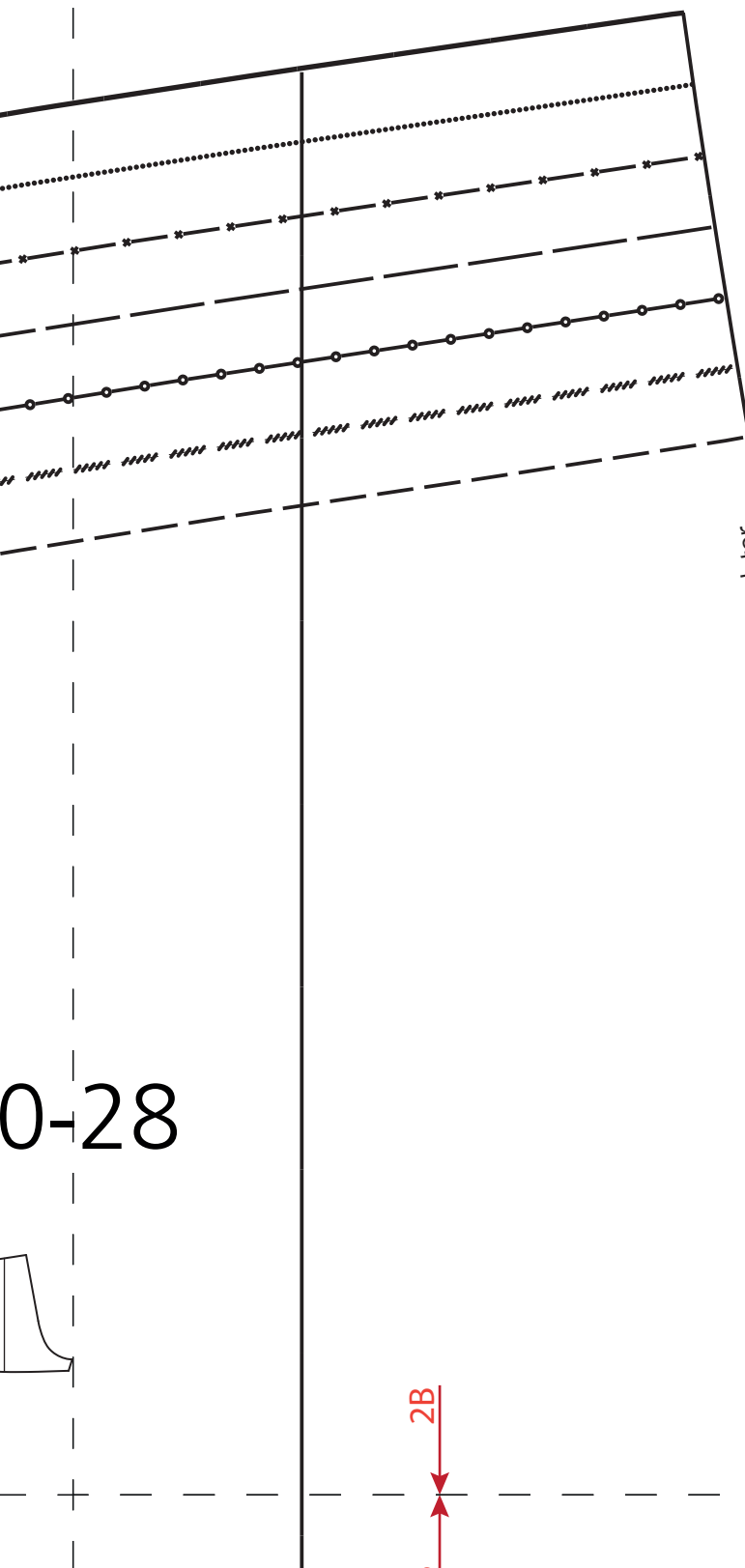
2A

A

Vord. M. Stoffbr. Fadenl./  
 C. fr. fold str. grain/  
 Mil. endr. pli droit fil/  
 Middenv. stofv. draadr.

# 5

1A

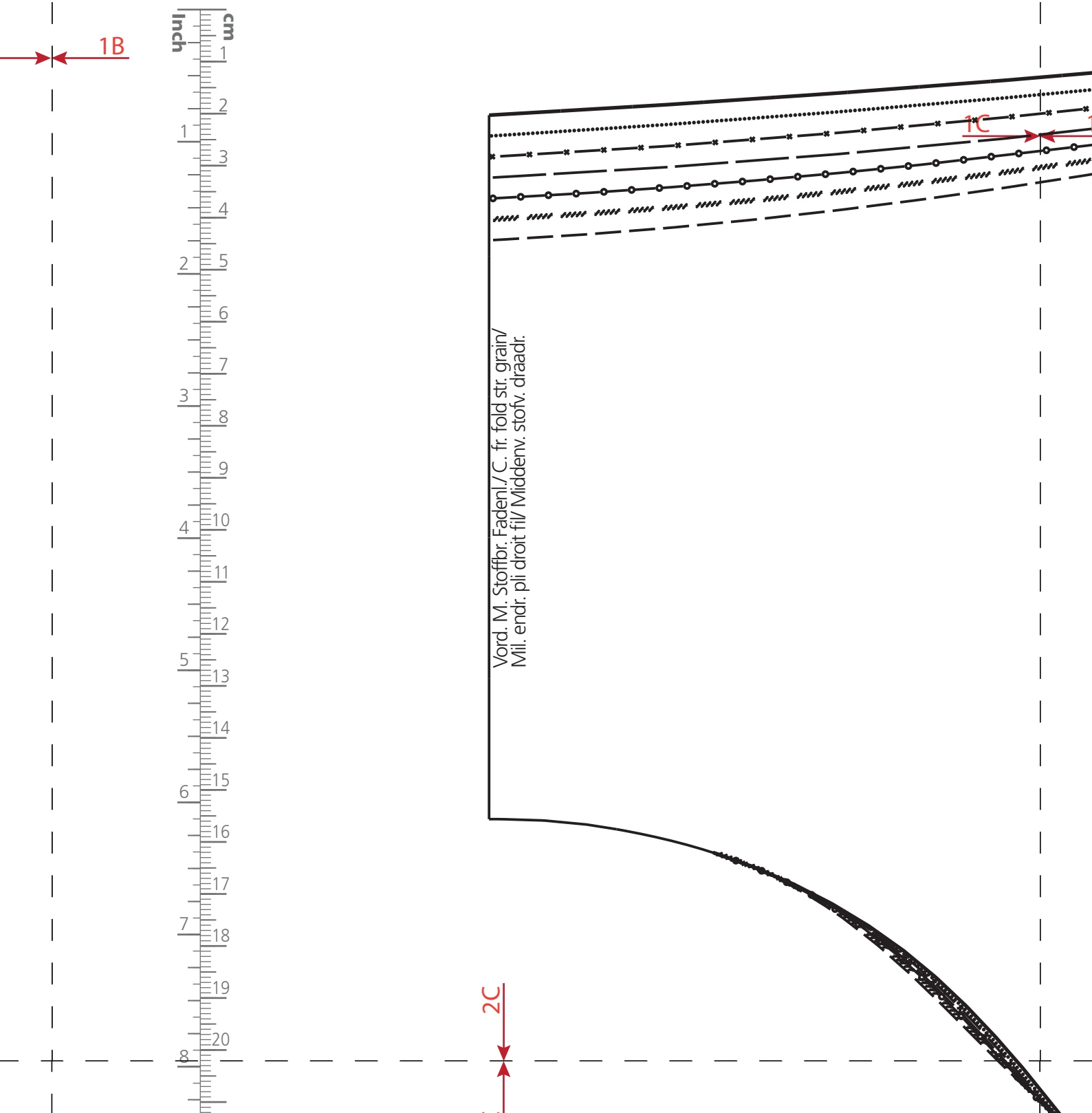


1B

0-28

Rückwärtige Mittel/ Centre back/ Milieu envers/ Middenachter

Bruchlinie/ Fold line/ Ligne de pliure / Vouwlijn

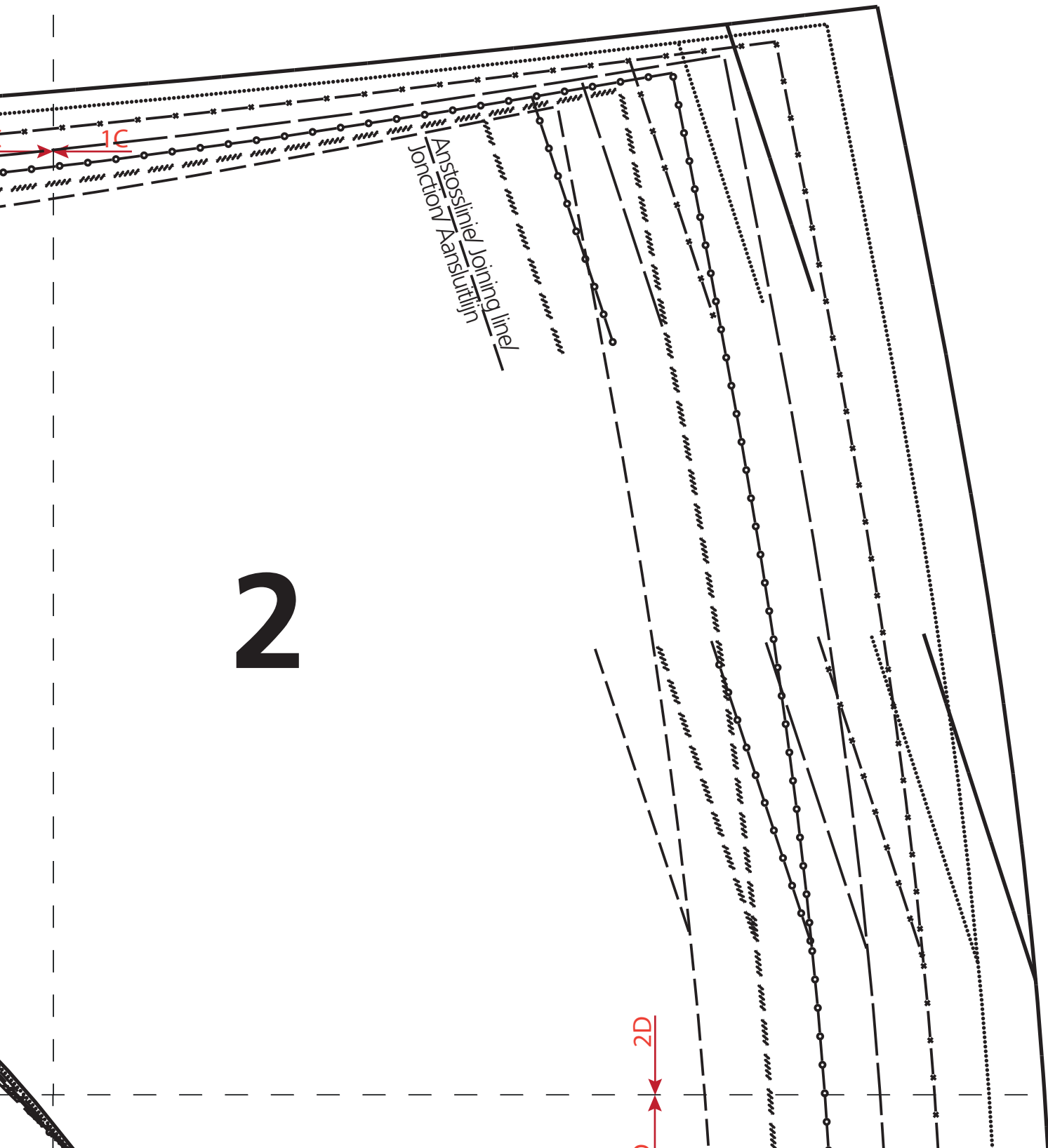


Vord. M. Stoffbr. Faden./ C. fr. fold str. grain/  
Mil. endr. pli droit fil/ Middenv. stofv. draadr.

1B

1C

2C



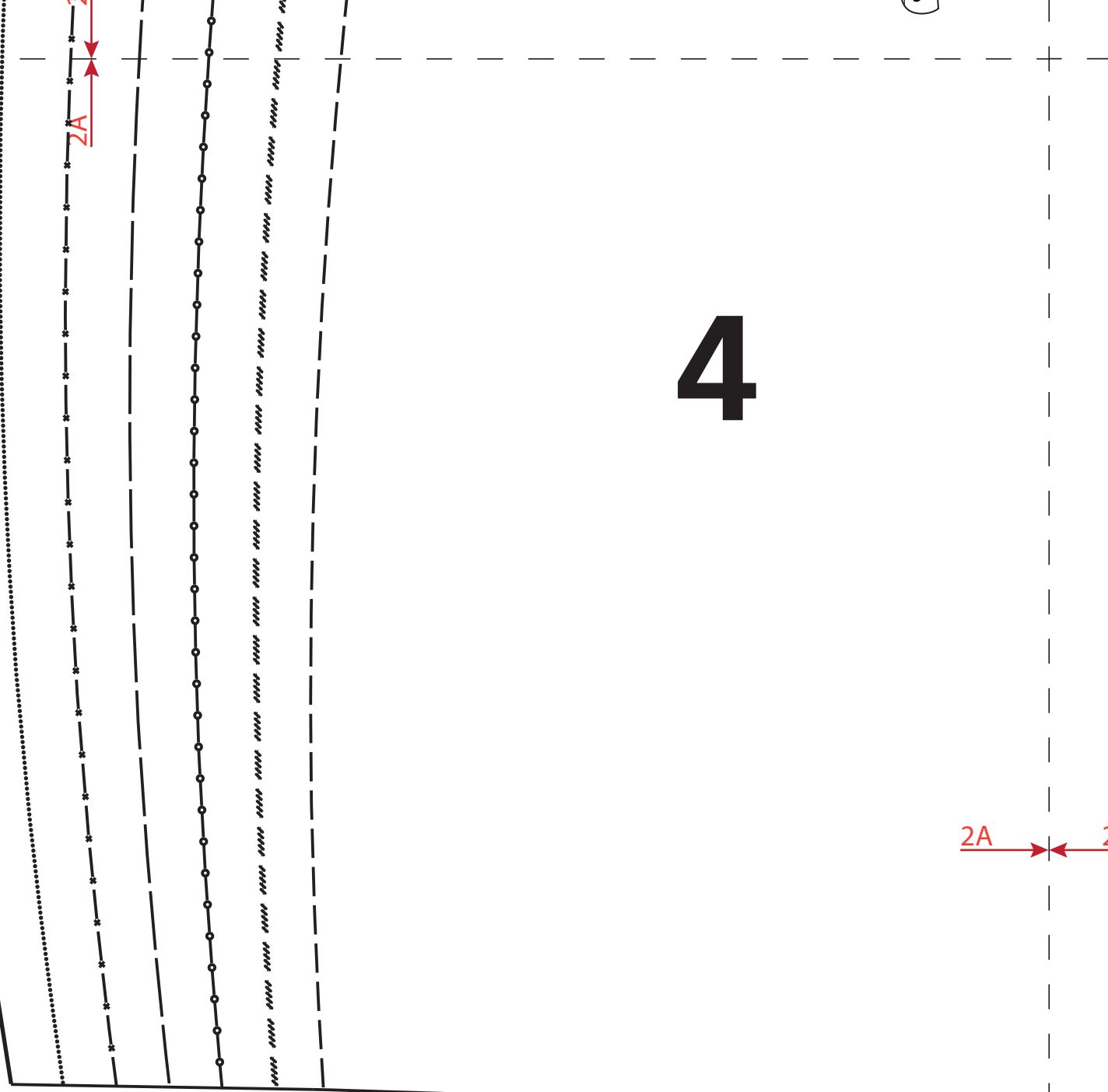
Joining line /  
Arastırılın  
Junction

2

1C

2D

# 4



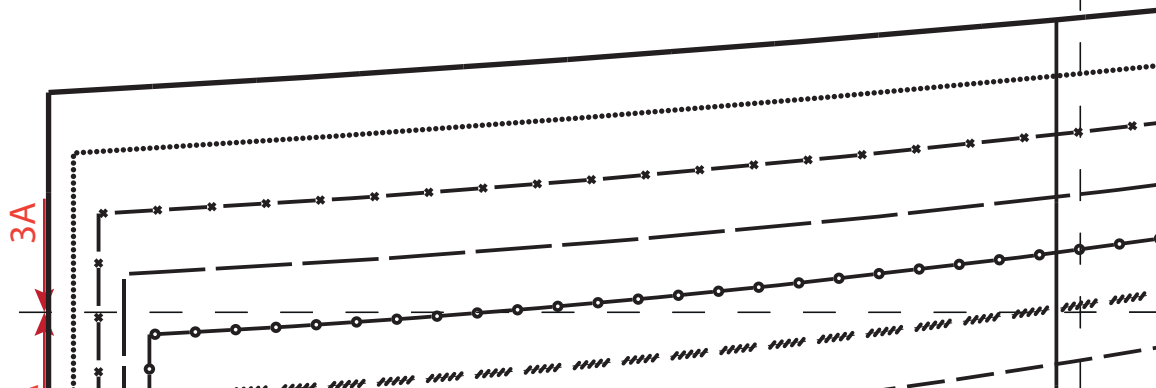
2A

**Wichtig:** Alle Schnittteile sind ohne Nahtzugabe, falls nichts anderes vermerkt ist!

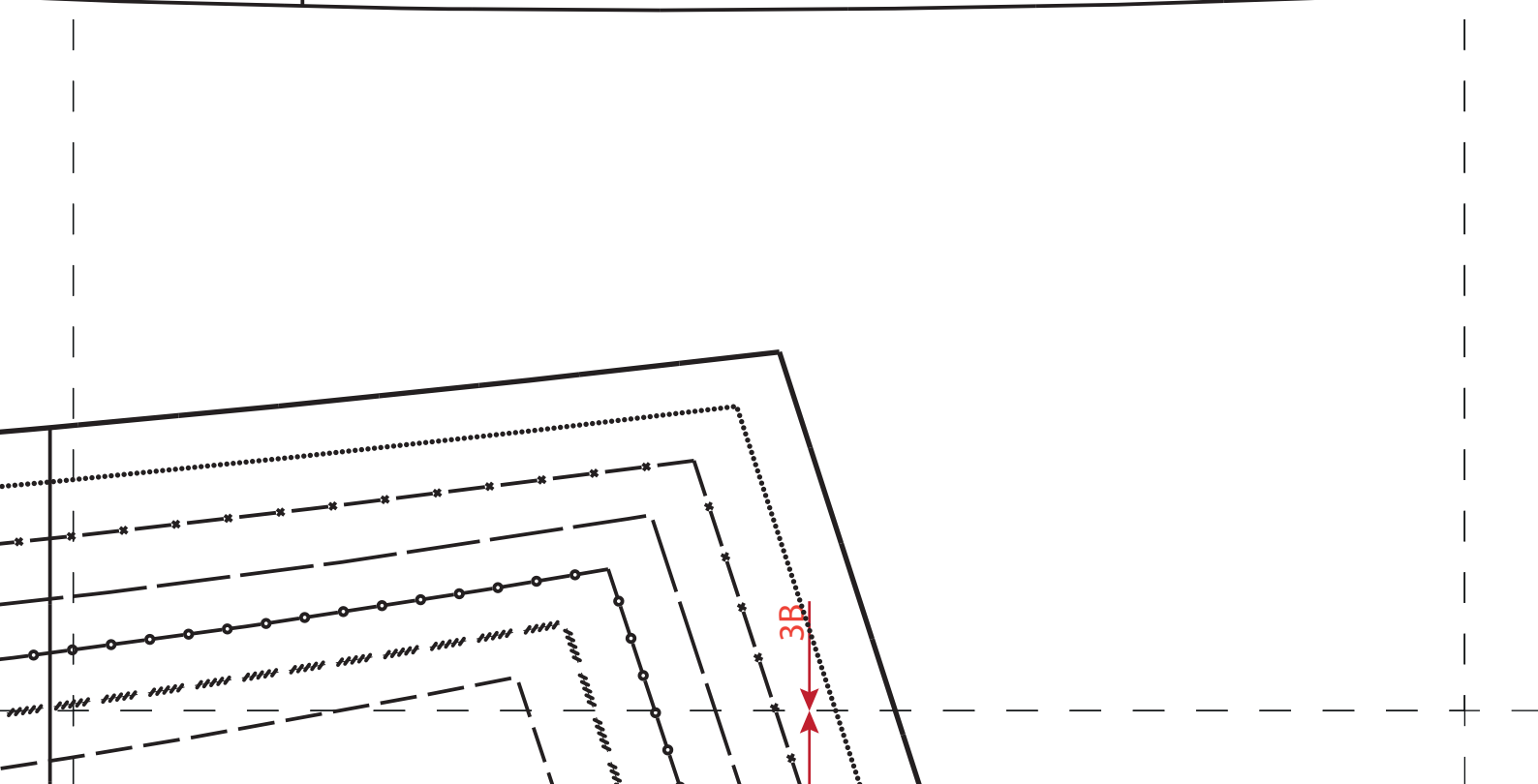
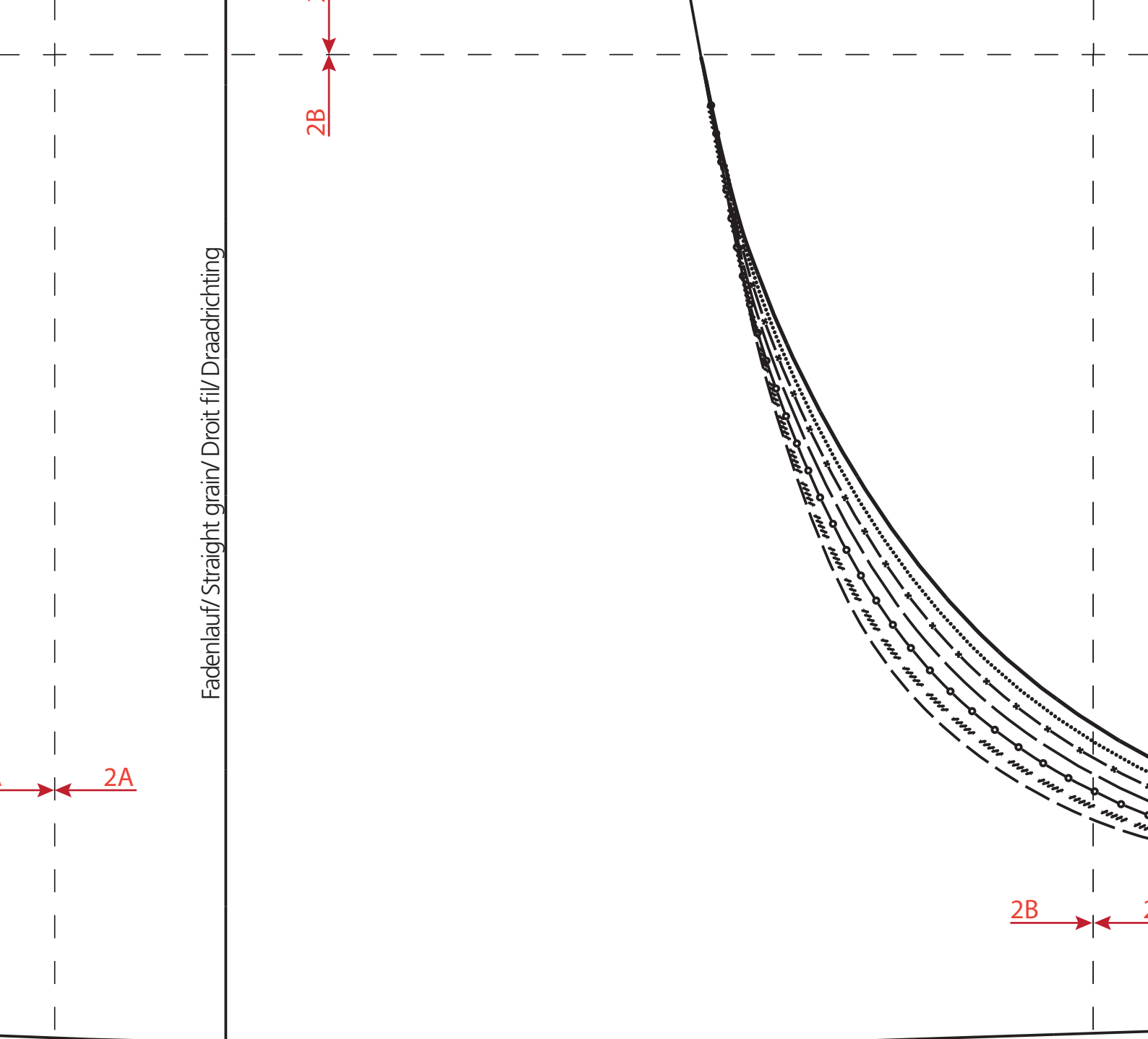
**Important:** All Patterns are without seam allowances, unless otherwise indicated!

**Important:** Toutes découpes sont sans surplus de couture (sauf mention contraire)!

**Attentie:** Alle patroondeelen zijn zonder naadtoeslag, tenzij anders vermeld!



Fadenlauf/ Straight grain/ Droit fil/ Draadrichting





2C

Für Körpergrösse/ for height/ pour la taille/ Maten voor lichaamsgrootte 168 cm

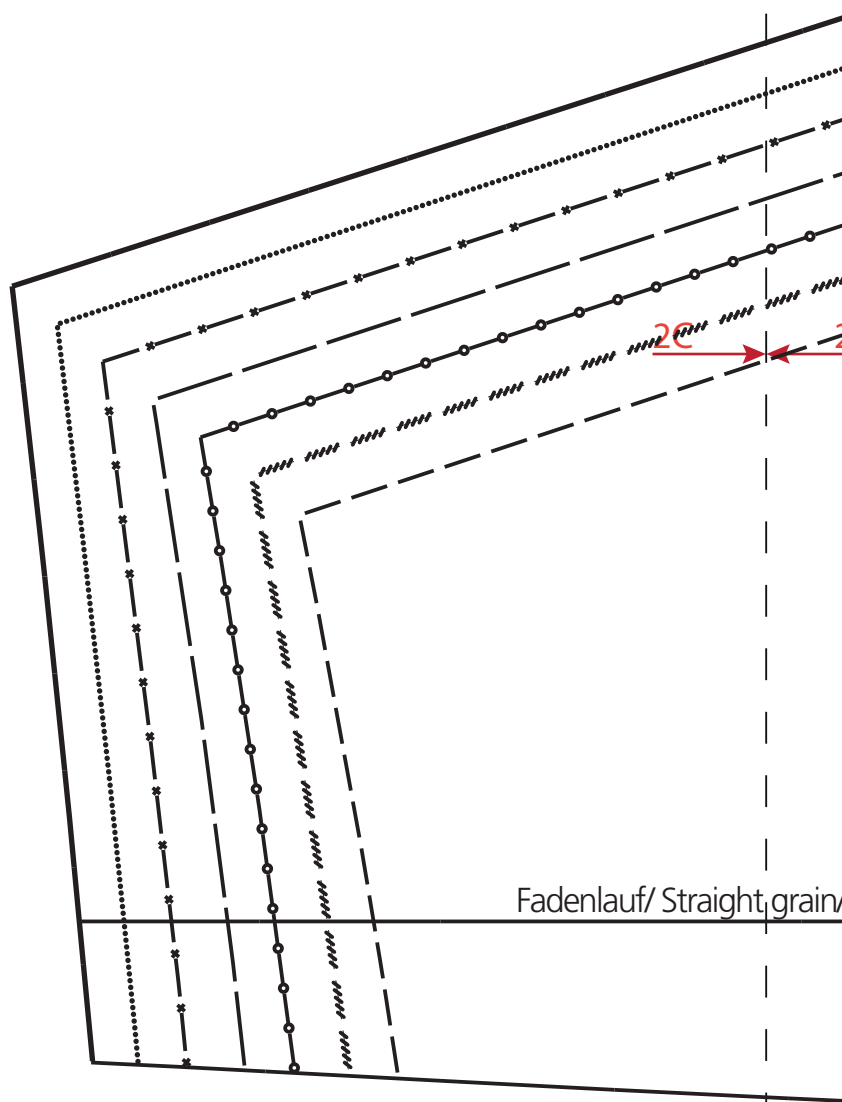
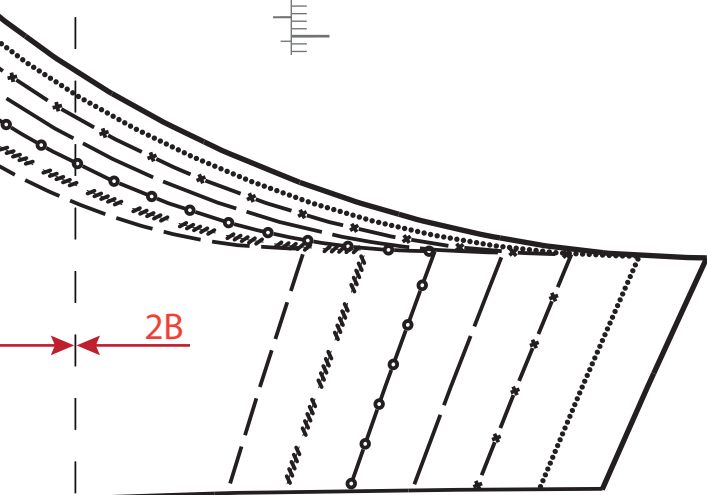
Grösse/ Size/ Taille/ Maat	34	36	38	40	42	44	46	48
Oberweite/Bust/ Poitrine/ Bovenwijdte	80	84	88	92	96	100	104	110
Tailenweite/ Waist/ Taille/ Tailenwijdte	64	67	71	75	79	83	87	93
Hüftweite/ Hip/ Hanche/ Heupwijdte	90	93	96	99	102	105	108	114
Vord. Tailenlg./ Front waist length/ Longueur taille devant/ Taillelengte voor	42	43	44	45	46	47	48	49
Rückw. Tailenlg./ Back waist lenth/ Longueur taille dos/ Ruglengte tot taille	41	41	41	42	42	42	42	43

Legende/ Legend/ Légend

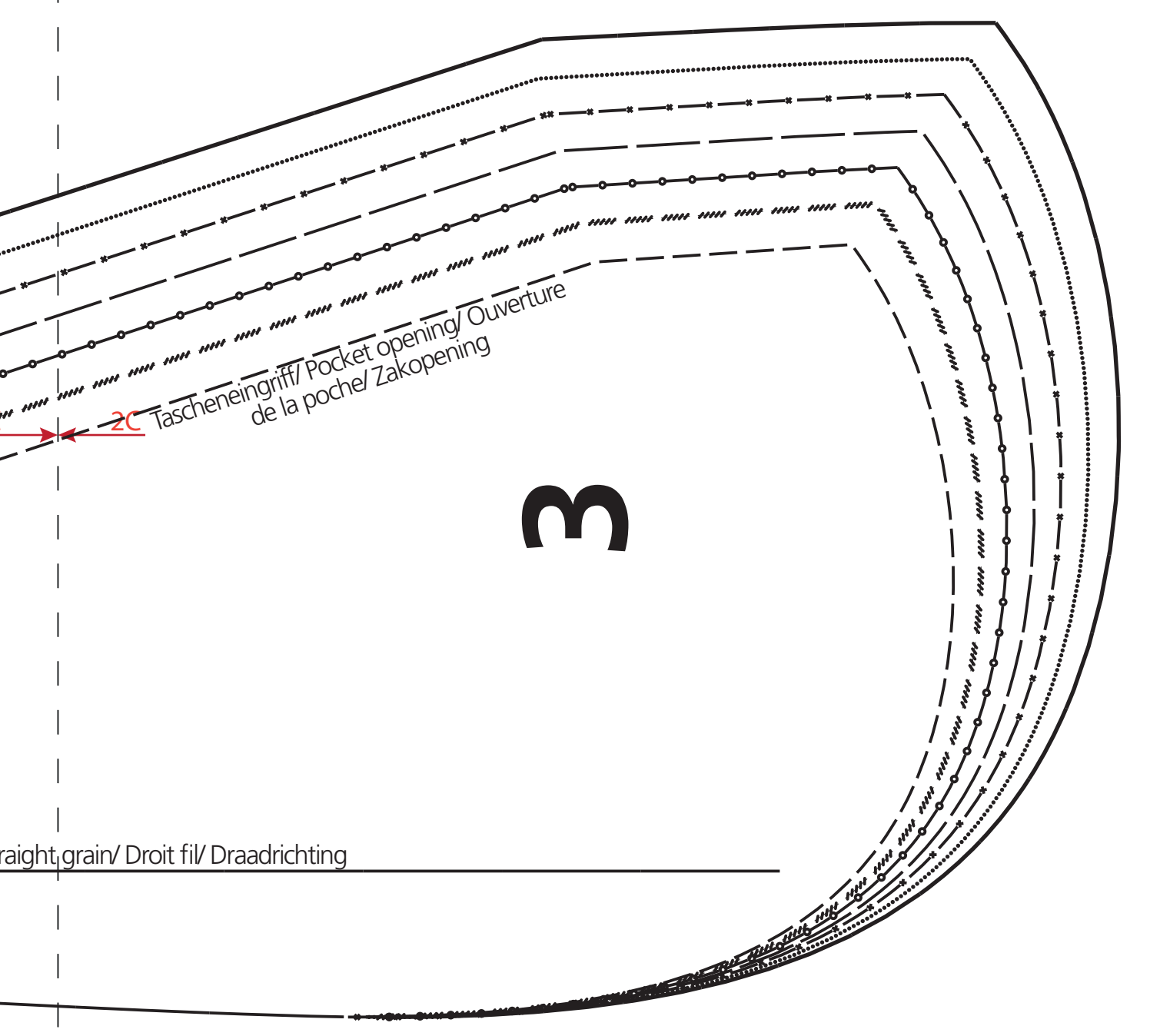
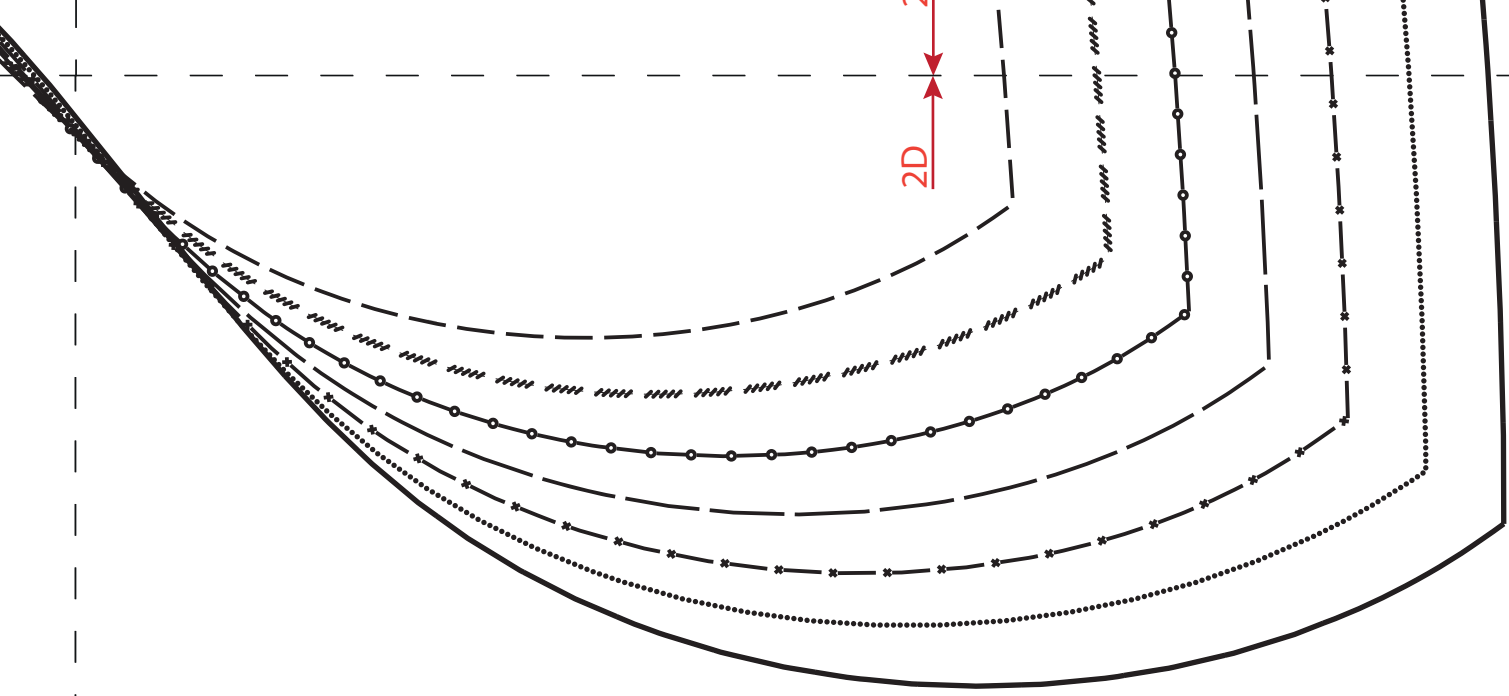
Grösse/	-----	34
Size/	-----	36
Taille/	-----	38
Maat	-----	40
	-----	42
	-----	44
	-----	46
	-----	48

For height 66 Inch:

Taille	34	36	38	40	42	44	46	48
Bust	31,5	33,0	34,6	36,2	37,8	39,4	40,9	43,3
Waist	25,2	26,4	28,0	29,5	31,1	32,7	34,3	37,0
Hip	35,4	36,6	37,8	39,0	40,2	41,3	42,5	44,9
Front waist length	16,5	17,0	17,3	17,7	18,0	18,5	18,9	19,2
Back waist lenth/	16,0	16,0	16,0	16,5	16,5	16,5	16,5	16,9



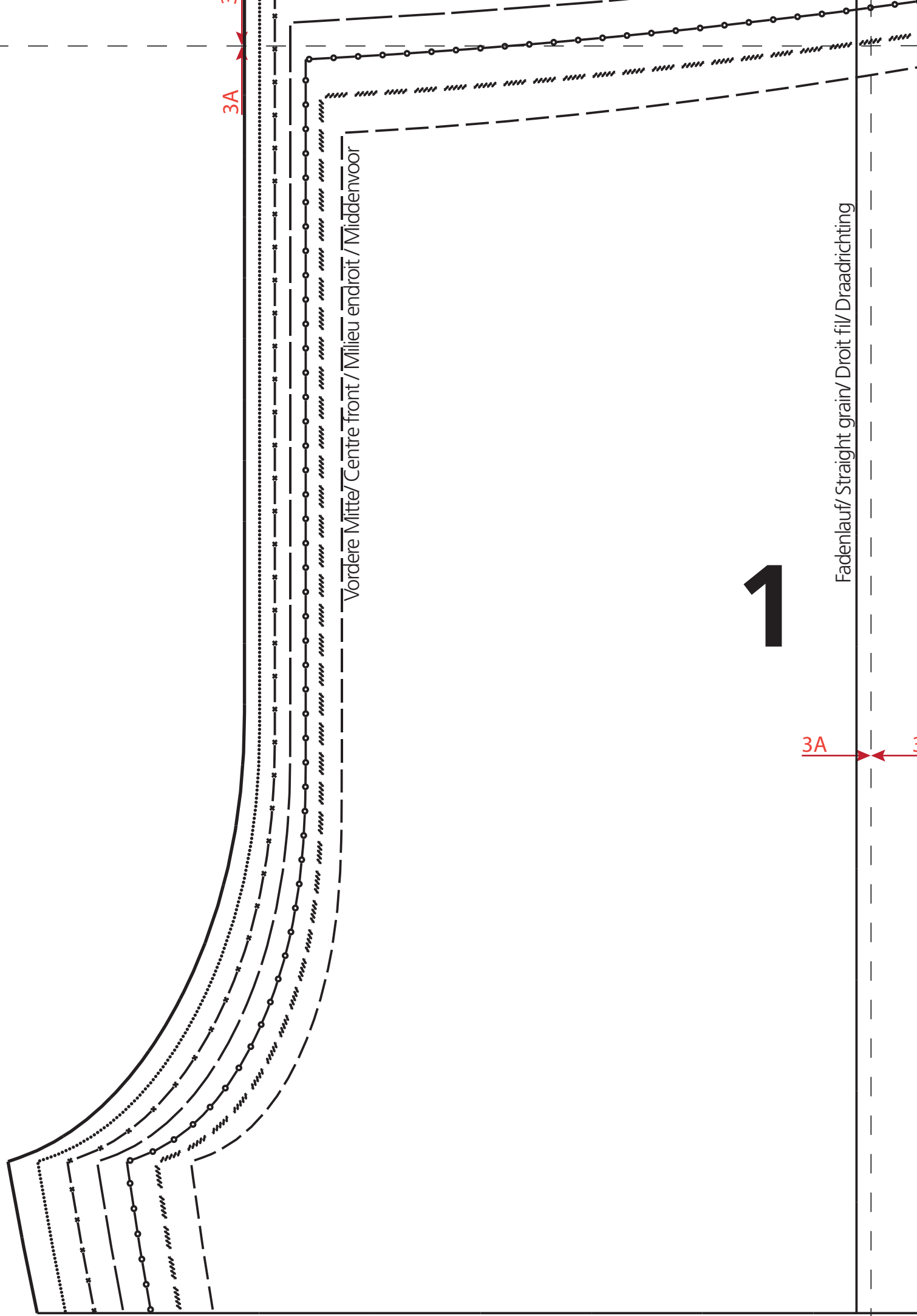
Fadenlauf/ Straight grain



Tascheneingriff/ Pocket opening/ Ouverture  
de la poche/ Zakopening

3

straight grain/ Droit fil/ Draadrichting



Fadenlauf/ Straight grain/ Droit fil/ Draadrichting

3A

3B

Tascheingang/ Pocket opening  
de la poche/ Zakopening  
ouverture

