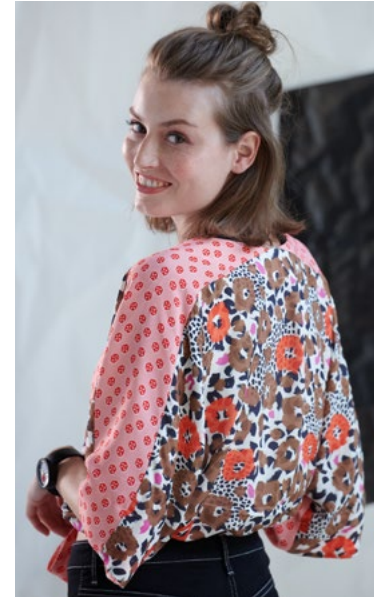
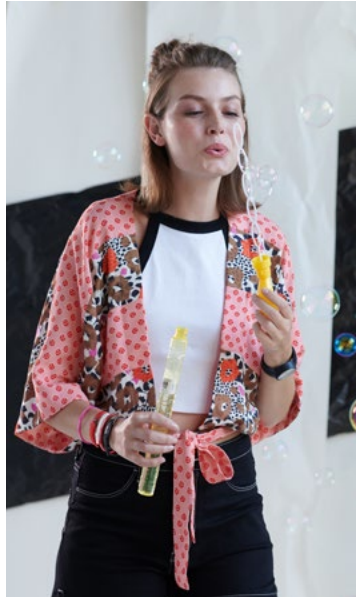


Short blouse "Clea"

Model 120-50
Sizes 36-48



PRINT THE CUT

1. Open the pattern PDF and set the control square to Page 1 with the setting "Original size" on DIN Print A4 paper (do not click on "Adjustment to page size"!).
2. Check the square – if it is 10x10 cm, print out the whole cut sheet.
3. Place all pages next to each other as indicated by the arrows and adhere them row by row along the boundary lines, then glue the rows together.
4. Compare the body measurements with the table measurements and cut out the cut parts in the appropriate size (the overview of the cut parts is on the pattern sheet). **Important:** Instructions do not include seam allowances, unless otherwise indicated.

SUPPLIES

- 0.6 m rayon in leo print design, 150 cm wide
- 0.7–0.8 m rayon in Hexagon print, 145 cm wide
- Fabric lining G 710 (Vlieseline)

CUTTING LEO PRINT

- 1 2 × bottommost front part
- 3 2 × topmost front part
- 6 1 × back part on the fold

CUTTING HEXAGON PRINT

- 2 2 × centre front part
- 4 2 × shoulder part

- 5 2 × facing for neckline
- 7 2 × facing for sleeve

Tie band 140 up to 170 × 7 cm, final width 3.5 cm.

INSTRUCTIONS

1. Sew the topmost front parts right side on right side on the centre ones and these again on the bottommost parts. Sew the shoulder parts right side on right side on the front parts. Close the rear centre seam, which are only allowances. Sew the shoulder part right side on right side on the back part. Finish all seams and iron them downwards.
2. Sew the sleeve facing right side on right side on the sleeve hem. Close the sleeve and the side seams continuously. Clip the allowances in the curves and finish them. Finish the open long edge of the sleeve facing and iron the facing to the wrong side. Topstitch the loose edge of the facing from the right.
3. Iron the fabric lining on the neckline facing. Sew the facing right side on right side along the neckline. Clip the allowances in the curves, finish the open long edge, iron the facing to the wrong side and topstitch from the right.
4. Sew the tie band right side on right side from both ends for approx. 25–30 cm together and turn the ends. Gather the lower edge of the blouse to match the waist measurement plus approx. 2 cm. Sew the tie band right side on right side above the lower edge, leaving a little more band on one side than on the other. Place the open long edge inwards, fold the allowances back and fix them with pins. Topstitch the band all around.

