

BERNINA Embroidery Software

Version 7



made to create **BERNINA**

RELEASE NOTES

Rev 2 Feb 2014

These Release Notes contain descriptions of all features and improvements in the BERNINA Embroidery Software V7.0 product range new to this release. The BERNINA User Manual contains descriptions of all product features as of the last major release. Every effort has been made to ensure their accuracy.

© 2013 Corel Corporation. All rights reserved. CorelDRAW® Essentials 6 is provided under an enclosed license agreement that defines what you may do with the product and contains limitations on warranties and your remedies. © Copyright 1997-2013 Wilcom Pty. Ltd., Sydney Australia. All rights reserved. Portions of the imaging technology of this product are copyrighted by AccuSoft Corporation. Some portions of this program are copyright Codejock Software © 2006. All rights reserved.

BERNINA EMBROIDERY SOFTWARE V7.0 RELEASE NOTES

BERNINA Embroidery Software V7.0 builds on the previous release in evolutionary rather than revolutionary terms. Current users will immediately notice changes to the software interface, with better organization and easy-to-read icons. Much thought has gone into the redesign of the 'GUI' to make it inviting, creative and easy-to-use, for new and existing customers alike.



Beyond improvements to the 'mechanics', the major theme of this release is '3D'. The aim is to expand the creative possibilities of both your BERNINA machine and your design software. Take your embroidery beyond traditional flat surfaces into raised, even 'sculpted' surfaces using techniques such as stumpwork, raised embroidery and trapunto, as well as needle felting. Machine and software work seamlessly together to help realize your creative ideas.

Spend some time getting to know the creative possibilities by reading through these notes. We recommend you look at the packaged designs to get a better idea of capabilities of the new 3D features. You might even want to sew out some of these designs to get acquainted with the techniques involved. Then you'll be ready to make the most of your machine and your software to realize your own design creations.

BERNINA Embroidery Software V7.0 at a glance

Here is a summary of the features included in the V7.0 software. These are explained in more detail later.

New features

The new features of V7.0 software include:

- ▶ 3D trapunto embroidery
- ▶ 3D stumpwork embroidery
- ▶ Support for the BERNINA® punch tool
- ▶ Raised satin stitching
- ▶ 3D puffy lettering - raised lettering without the need for 3D foam
- ▶ New 3D foam lettering alphabets - these alphabets show the word 'Puffy Foam' in the name
- ▶ Easy recoloring of designs including:
 - ▶ Revised color palette with color picker and paint bucket tools
 - ▶ Rapid rotation through used colors
- ▶ Visualization of designs on typical articles – e.g. T-Shirts or Jackets
- ▶ New 'Transform' toolbar for better editing
- ▶ New rulers & guides for accurate placement and sizing
- ▶ Easy tools for resequencing

Improvements

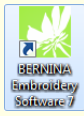
Improvements in V7.0 software include:

- ▶ Faster software startup and improved usability
- ▶ New look graphical user interface with better organization and easy-to-read icons
- ▶ 'New from template' when opening software or creating new designs
- ▶ Changed mouse scroll-wheel behavior
- ▶ Color wheel improvements
- ▶ Multi-level 'Break Apart' for lettering
- ▶ Improved fill and remove holes
- ▶ Better object recognition in recognizing closed fill objects
- ▶ Improved Slow Redraw
- ▶ Set margin for multi-hooping registration marks
- ▶ Support for Microsoft standard OpenType (OTF) fonts
- ▶ Improved design management in Windows Explorer, including new large Artistic View thumbnails and better preview information for ART60 files.
- ▶ Other improvements as described below.



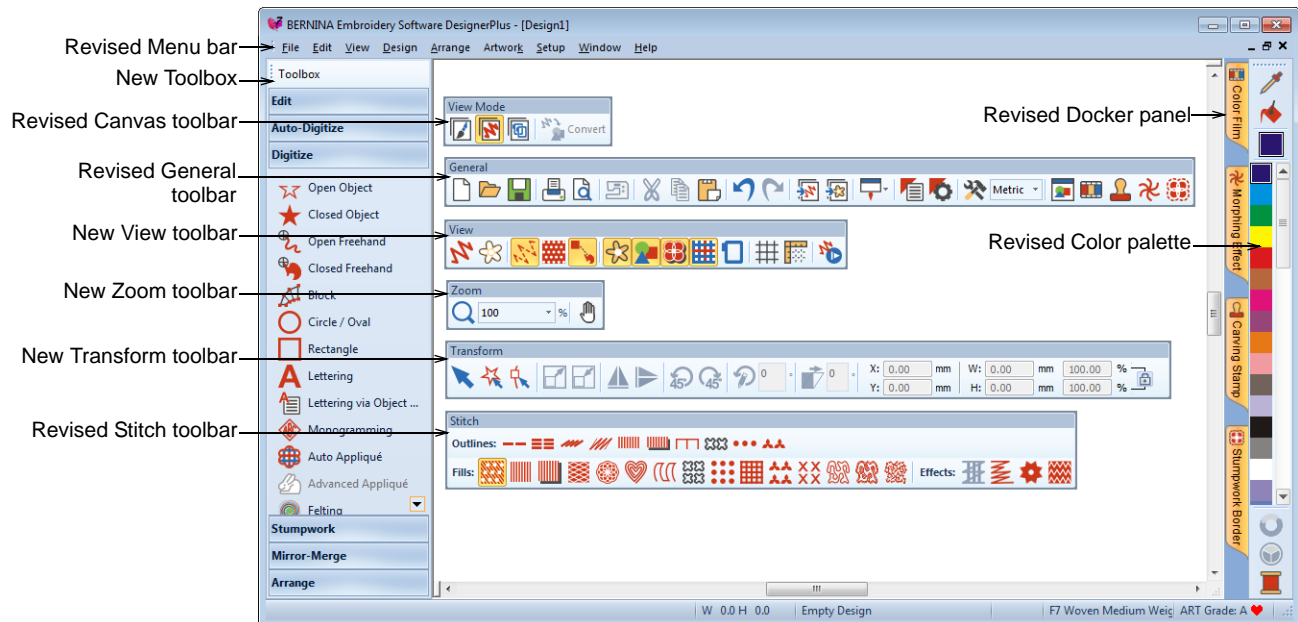
Note These Release Notes give detailed descriptions of new and improved features in BERNINA Embroidery Software V7.0 and provide direct links to relevant sections of the Reference Manual. Additional information may be included in the Release Notes that was not available when the manual was sent to production.

New-look BERNINA Embroidery Software V7.0 interface



Double-click to start BERNINA Embroidery Software V7.0.

First things first, let's look at the mechanics of the new release – the user interface or 'GUI'. When you first run BERNINA Embroidery Software V7.0, you will see the new-look **Embroidery Canvas** workspace. Depending on your product level, you will have access to some or all of these options.



The BERNINA Embroidery Software V7.0 interface was updated in keeping with latest MS Windows® developments. It contains new-look icons, new-look 'docker' dialogs, as well as new and revised toolbars for improved efficiency and ease-of-use. The aim is to improve overall usability while preserving easy-access to the rich feature set for experienced users.

Overall usability

Some functional GUI improvements include:

- ▶ Faster startup
- ▶ Larger icons for easier recognition and access
- ▶ Better grouping of tools for specific uses
- ▶ Exposure of previously hidden functionality
- ▶ Better panning and zooming

New Canvas toolbar

As before, BERNINA Embroidery Software V7.0 has one workspace or 'design window' but you interact with it in different modes. There are now three:

Artwork Canvas, **Embroidery Canvas**, and **Hoop Canvas**. However, the old tabs for **Art Canvas**, **Embroidery Canvas** and **Hoop Layout** have been

replaced with a new **Canvas** toolbar. See [Operating modes](#) in the Reference Manual for details.



As a reminder of what the various modes do:

- ▶ **Artwork Canvas:** This allows you to create and edit bitmap and vector artwork using the CorelDRAW® Essentials 6 toolset.
- ▶ **Embroidery Canvas:** This allows you to create, edit, and output embroidery designs using the embroidery digitizing toolset.
- ▶ **Hoop Canvas:** This allows you to set up position and sequence of all hoopings used in the stitchout of a design.



Note Artistic View is now available in **Embroidery Canvas** mode via the **Show Artistic View** icon on the **General** toolbar or <T> shortcut key.

New 'Toolbox'

This is perhaps the most visible change to the BERNINA Embroidery Software V7.0 interface. The new 'concertina' **Toolbox** shown above, encapsulates all digitizing and editing tools in easily accessible toolsets, including the new **Stumpwork** feature.

New toolbars

The new-look interface also includes a number of new and revised toolbars. Unlike the **Toolbox**, toolbars can be 'floated' in the design window for persistent access. See also [Usability improvements](#).

Raised '3D' embroidery

As mentioned, the major theme of this release is 3D embroidery – the expansion of flat embroidery surfaces into raised and sculpted surfaces. BERNINA Embroidery Software V7.0 offers major new features in support of this.

Stumpwork embroidery

The **Stumpwork** feature spearheads the 3D theme of this release. This spectacular effect, dating back to the 1600s has had a revival. Now you can turn basic embroidery into 3D and visualize it on-screen. Put a thin wire over the part of the design you want to highlight and your embroidery machine

covers it with satin stitch. Simply cut out and bend to create the desired 3D effect.

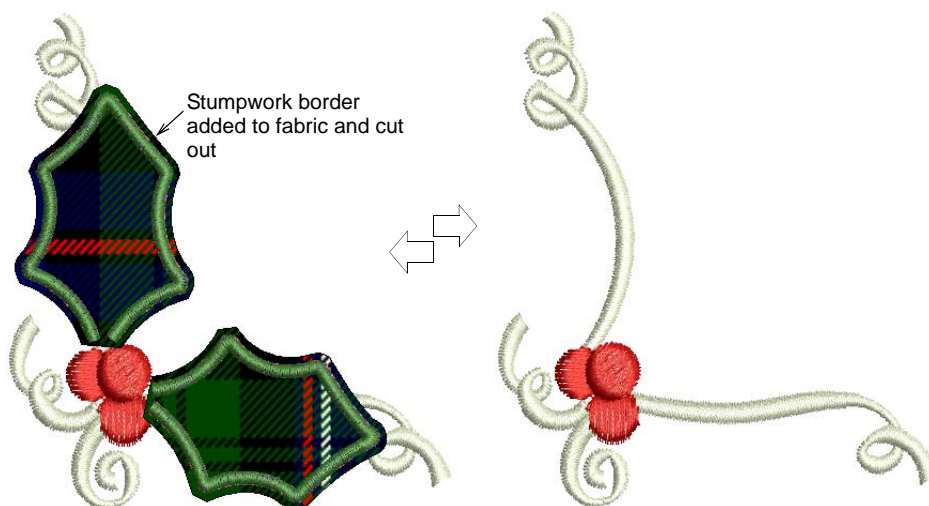


In brief, stumpwork is a raised form of embroidery created on one background and transferred to another, 'ground fabric'. Through the use of padding, beads, wire and/or needle lace, it becomes three-dimensional in contrast to flat embroidery.

The biggest issue for anyone trying to create this type of design is visualizing it. BERNINA Embroidery Software V7.0 allows you to view all components of a stumpwork design in a single design window. At the same time, it lets you edit each stumpwork piece individually and output to machine in the required sequence. See also **Stumpwork embroidery** in the Reference Manual.

Digitizing stumpwork with fabric and wire

Digitizing with wire and border is probably the simplest way to create stumpwork. It involves digitizing a simple stumpwork border.

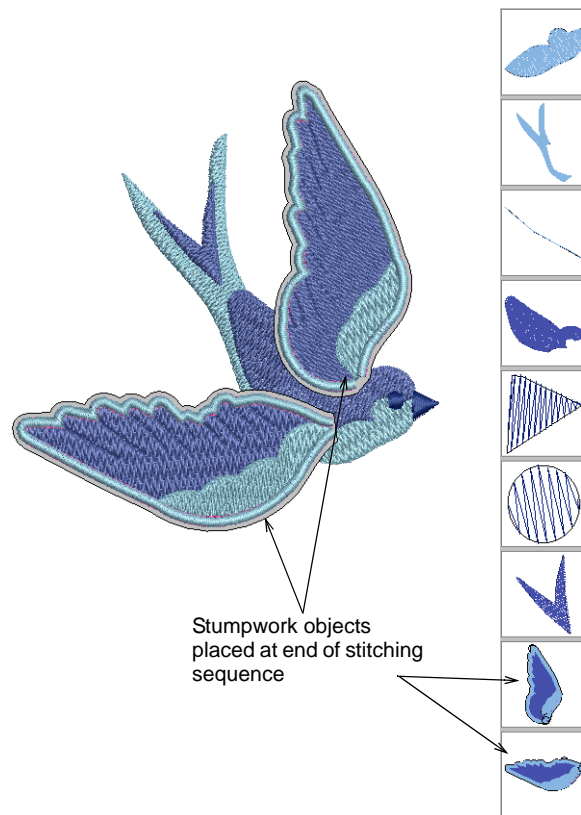


This is then sewn onto a separate piece of fabric, usually patterned, with the inclusion of a wire, and then cut out and attached to the base design. See [Digitizing stumpwork with fabric & wire](#) in the Reference Manual for details.

Creating stumpwork from existing embroidery

This scenario involves selecting embroidery shapes from which to generate the mandatory cutting element. This usually includes a wireline but doesn't have to. The resulting stumpwork embroidery element is sewn separately with wire and border. It is then cut out and sewn or attached to the base design. See

Creating stumpwork from existing embroidery in the Reference Manual for details.



Quilted embroidery



Use Edit > Create Trapunto Outlines in conjunction with Raised Satin to create quilt stitching for a raised 'quilted' look.



Use Stitch > Raised Satin Fill to create raised embroidery designs consisting of multiple layers of satin stitching.



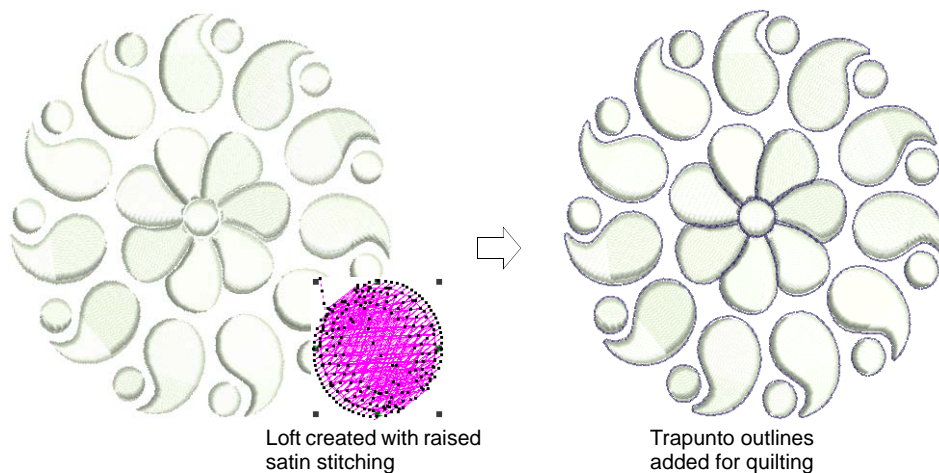
Use Stitch > Raised Satin Outline to create raised satin borders – can be used with trapunto for quilting effects.

Continuing the theme of raised and sculpted surfaces, BERNINA Embroidery Software V7.0 introduces two new stitch types – **Raised Satin** and **Trapunto Outlines**. Trapunto is a traditional hand-quilted technique. Dimension is

usually added by stuffing or filling areas to produce a raised surface, and applying a second layer of fabric with trapunto outlines.



The raised effect can now be completely created by machine. **Raised Satin** is used to create the desired loft. This stitch type consists of multiple layers of satin stitching. The **Create Trapunto Outlines** feature is often used with raised satin to create loft for a quilted look. This allows you to place a covering fabric over top. See also [Quilted embroidery](#) in the Reference Manual.



Raised Satin can also be applied to lettering with or without trapunto outlines to create raised lettering. See also [Applying different stitch types & effects to lettering](#) in the Reference Manual.



Note To make sure your design is being displayed correctly in 3D, particularly with **Raised Satin** in **Artistic View**, calibrate your monitor. See [Calibrating the monitor](#) in the Reference Manual for details.

Needle felting



Use Digitize > PunchWork to create felting objects and designs for use with the BERNINA Rotary Hook Punch tool.



Click View > Show Appliqué Fabric to toggle appliqué fabrics and colors on/off. Also works with felting fabrics.

Needle felting, also called 'dry felting', is a popular fiber-arts craft that creates felt without the use of water. Now you can transform your embroidery into something entirely new with **PunchWork**. Create new textures and combinations using a felt background with punching and embroidery to highlight.

Example of use

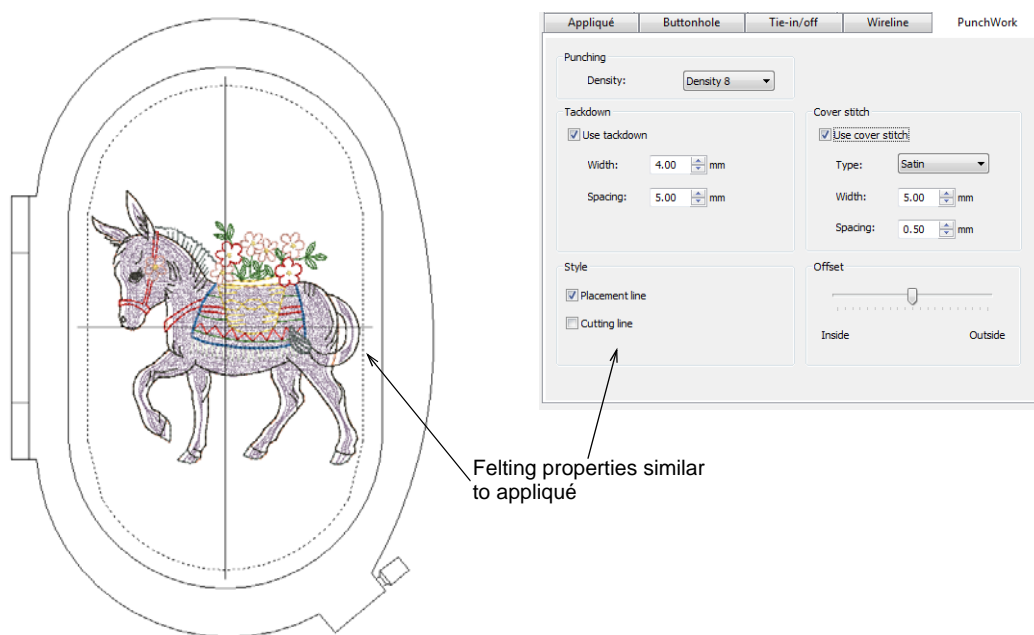


Needle-punch tool for rotary hook machines



BERNINA Embroidery Software V7.0 now provides a dedicated **PunchWork** tool which allows you to create felting objects and designs for use with the





BERNINA **Rotary Hook Punch** tool. See **Needle felting** in the Reference Manual for details.



Improved design visualization

BERNINA Embroidery Software V7.0 offers major improvements in design visualization.

Easy recoloring of embroidery designs

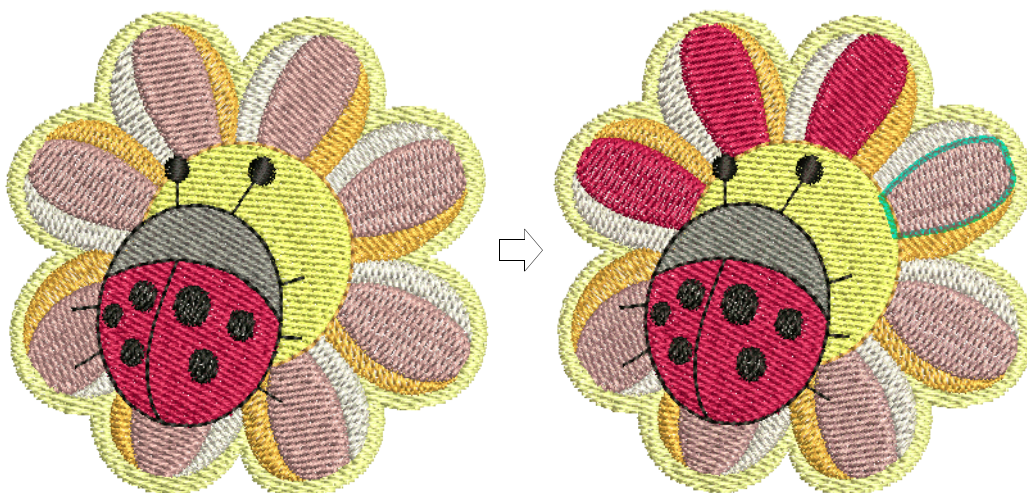
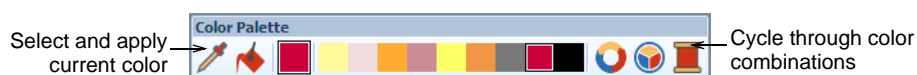
-  Use Color Palette > Color Picker to pick colors from existing objects.
-  Use Color Palette > Apply Current Color tool to fill an embroidery object with the currently selected color.
-  Use Color Palette > Cycle Used Colors tool to cycle through combinations of used colors. Right- or left-click.
-  Use Color Palette > Color Wheel to access dialog providing mechanisms for cycling through combinations of related colors.

BERNINA Embroidery Software V7.0 provides tools for enhanced color testing and selection.

Improved color palette

Pick colors from existing objects with the new **Color Picker** tool and fill other objects with the selected color. The new **Apply Current Color** tool allows you

to fill an object with the current color selection. See [Changing thread colors](#) in the Reference Manual for details.



Rapid color cycling

The new **Cycle Used Colors** and enhanced **Color Wheel** tools allow you to cycle through design colors. Quickly change the look of an entire design without changing threads, for re-application on different fabrics. See [Changing color schemes](#) in the Reference Manual for details.

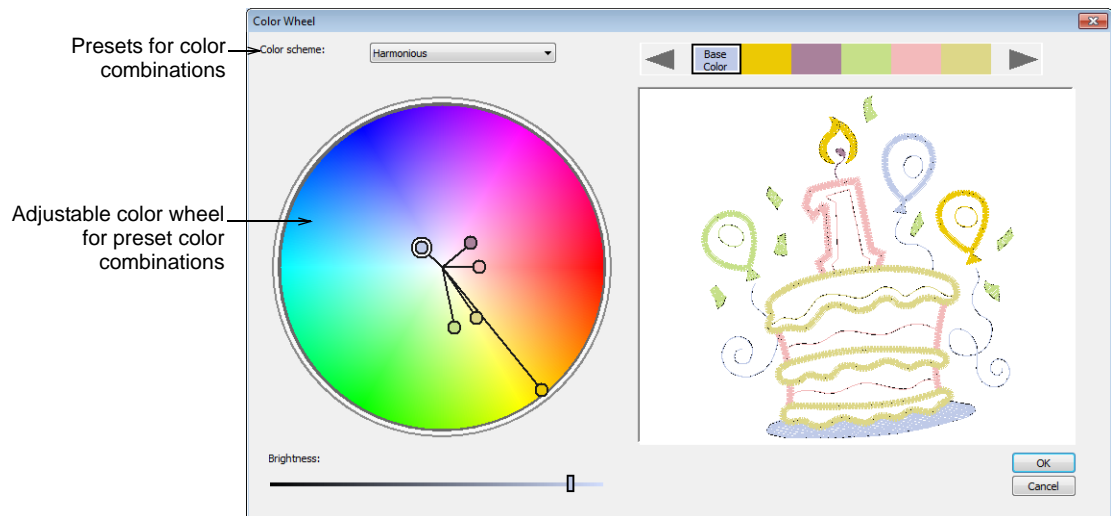


Improved color wheel

Color Wheel functionality was improved to allow you to change the color system used to recolor a design. Choose from:

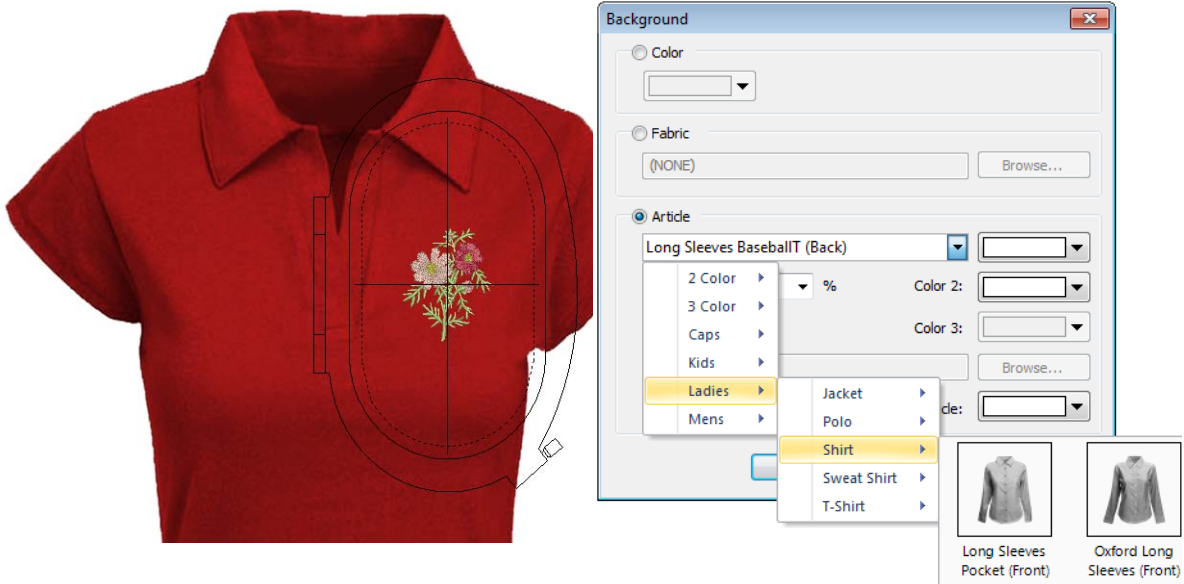
- ▶ Analogous
- ▶ Complementary
- ▶ Harmonious
- ▶ Monochromatic

► Triad



Visualizing designs on articles

BERNINA Embroidery Software V7.0 lets you set background color, fabric, or product backdrop for more realistic previews and presentations. The software provides a library of garments of common brands and styles. Choose colors for each product type, including multi-color garments. Visualize products in the design window, in print preview and design worksheets. See [Backdrops & backgrounds](#) in the Reference Manual for details.



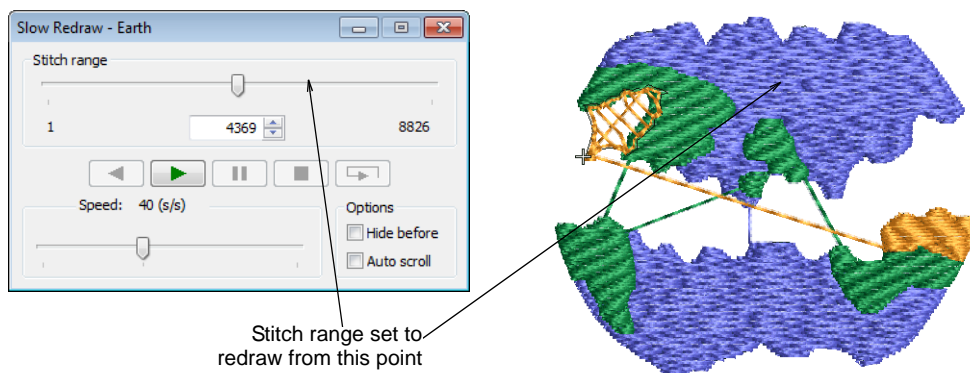
Enhanced Slow Redraw



Use View > Slow Redraw to simulate embroidery design stitchout on screen.

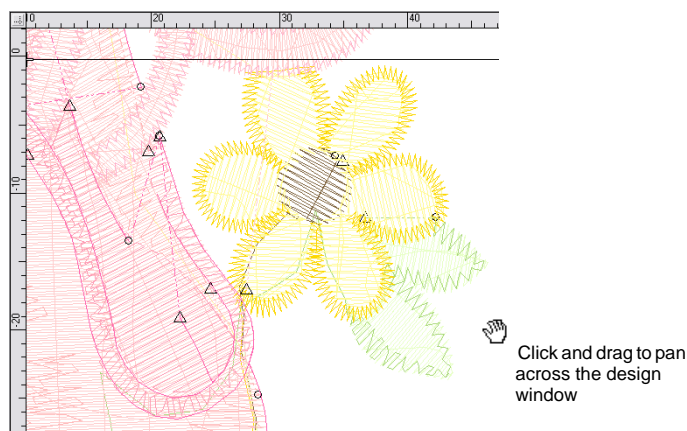
Slow Redraw is an important tool in BERNINA Embroidery Software. It lets you simulate the actual embroidery design stitchout on screen. **Slow Redraw**

was improved with the addition of a **Stitch Range** control to move rapidly through the design. **Slow Redraw** can now be run in both **Artistic View** and normal stitch view. See [Simulating design stitchouts](#) in the Reference Manual for details.



Improved panning & zooming

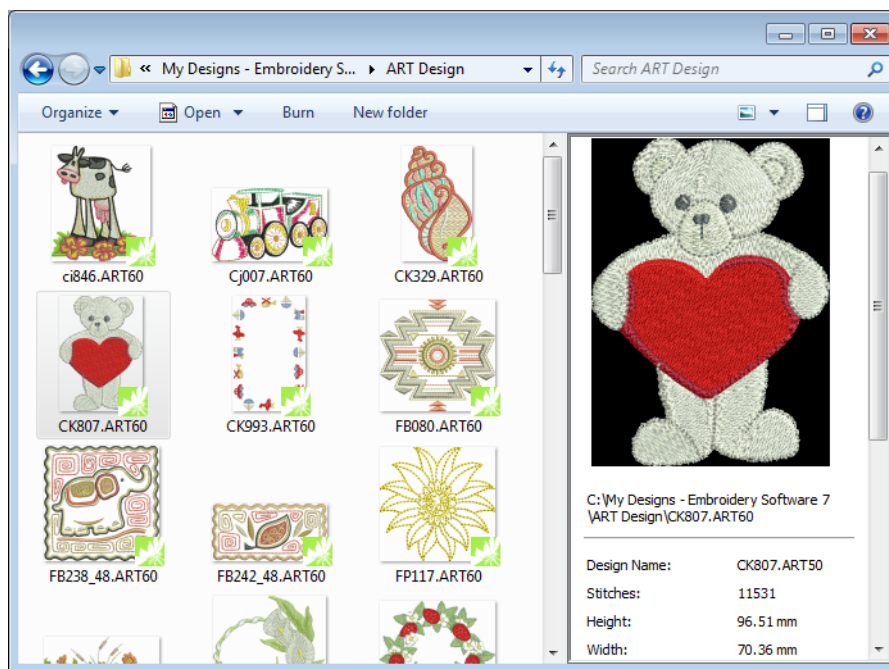
Pan is a very commonly used function. A common convention is the 'grabbing hand' tool with which you can click and drag the workspace. This has now been implemented in BERNINA Embroidery Software V7.0. Select the **View > Pan** menu item or press the 'P' key to pan the design window. See also [Zooming & panning](#) in the Reference Manual.



Improved design management

In the previous version, the ability to see design thumbnails in **Windows Explorer** was added. Design management in **Windows Explorer** was enhanced to include better thumbnails and design preview information. In addition to ART files, it also provides previews for stitch based designs, such

as EXP, PES, and DST. Thumbnails include all viewable design elements, including print.

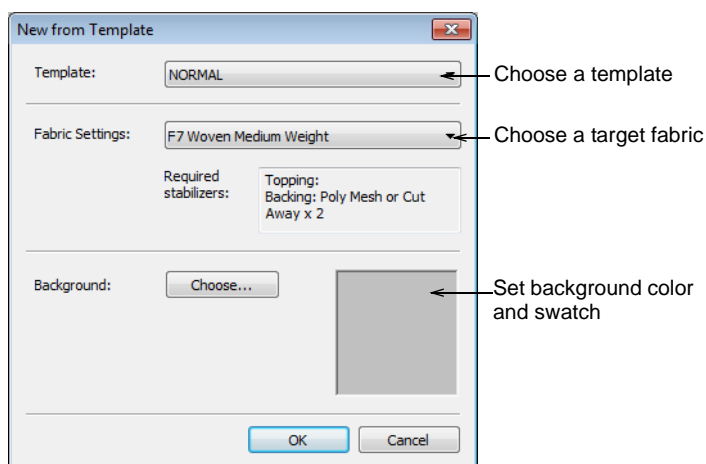


Improved design creation & editing

BERNINA Embroidery Software V7.0 offers major improvements in digitizing and object editing.

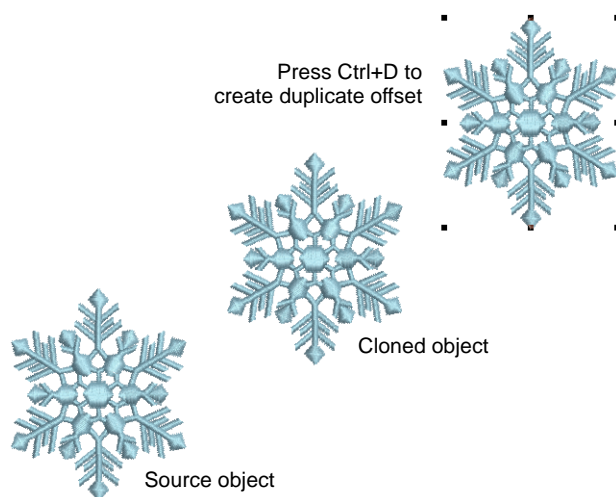
Improved design setup

With the revised **New from Template** function, you can choose to base default settings on a selected template as well as fabric settings. It is displayed on starting the software or when selecting **File > New from Template**. Optionally, choose a background fabric swatch to match selected fabric settings. See also [Starting designs](#) in the Reference Manual.



Step repeat offsets with duplicate objects

BERNINA Embroidery Software V7.0 now lets you create duplicate objects with an automatic offset. This means you can step-repeat offsets with duplicate objects.



First select an object and right-click and drag (clone) to the required location. Then press **Ctrl+D**. A new object is created at the same offset as the cloned object. See also [Cloning objects](#) in the Reference Manual.

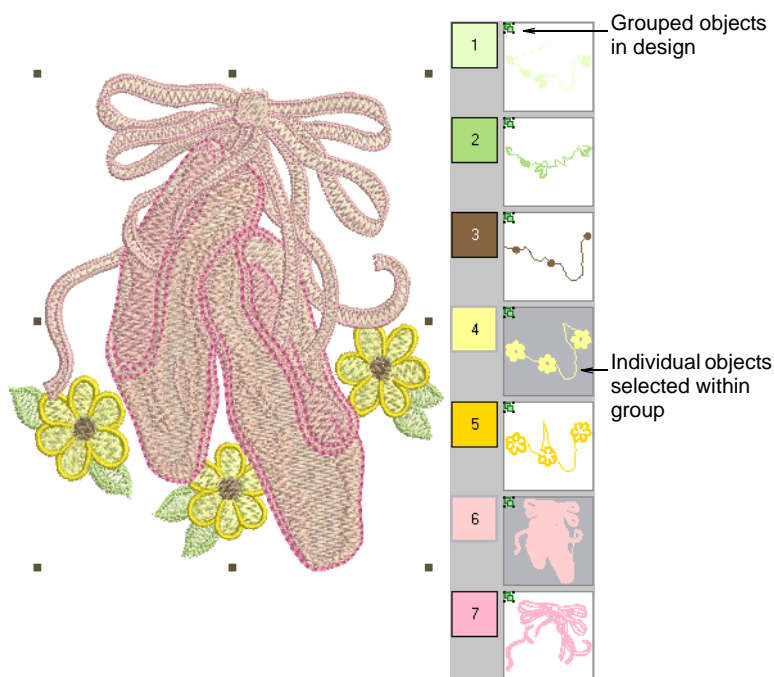
Selecting objects within groups



Click Transform > Select Object to select individual objects as well as groups or ranges of objects.

BERNINA Embroidery Software V7.0 provides a method for selecting individual objects within object groupings. The **Alt** key 'suspends' grouping temporarily. Use it in combination with **Shift** and **Ctrl** keys. This is handy if you want to

make changes 'on-the-fly' without first having to ungroup and then regroup objects. See also [Selecting objects within groups](#) in the Reference Manual.



Removing holes

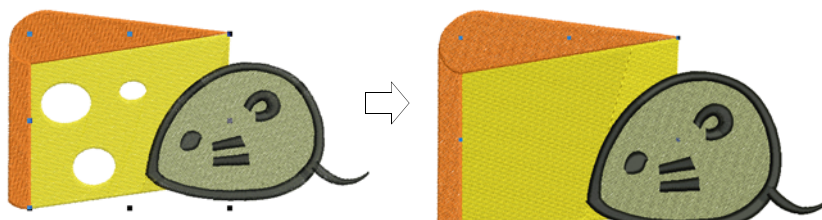


Use Edit > Add Holes to cut holes in objects.



Use Edit > Remove Holes to remove holes from objects.

In BERNINA Embroidery Software you can cut holes in selected closed objects with a single stitch angle using the **Add Holes** tool. The new **Remove Holes** tool allows you to remove unwanted holes in closed objects. See also [Adding & removing holes](#) in the Reference Manual.



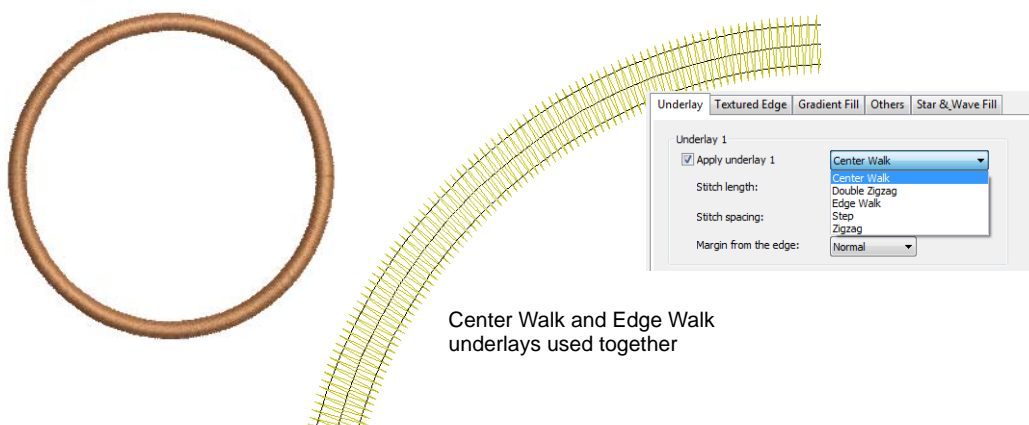
Center walk underlay



Right-click Stitch Effects > Auto Underlay to set Center Walk and Edge Walk underlay settings.

New **Center Walk** underlay places a row of stitches along the center of a column. It is used to stabilize narrow columns – e.g. 2-3 mm wide. It is often used in conjunction with **Edge Walk**. **Edge Walk** places stitches around the

edge of an object. See [Stabilizing with underlays](#) in the Reference Manual for details.

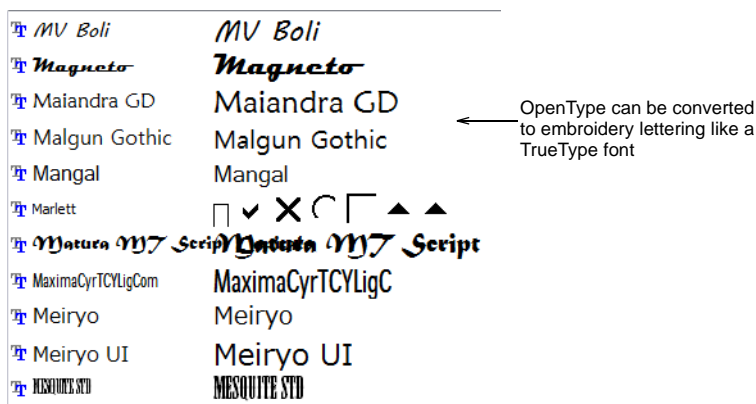


Lettering improvements

BERNINA Embroidery Software V7.0 also includes the following lettering improvements.

OpenType font support

BERNINA Embroidery Software V7.0 supports OpenType fonts although they appear in the alphabet list with the TrueType icon. OpenType can now be converted to embroidery lettering via **Artwork Canvas**. See also [Converting fonts to alphabets](#) in the Reference Manual.



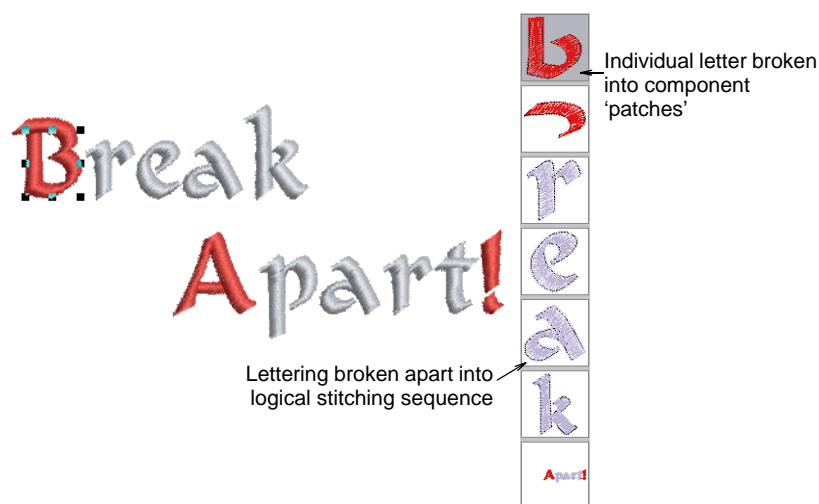
Breaking apart lettering for editing



Use Edit > Break Apart to split monograms, appliqués, lettering, and blackwork runs into component objects.

BERNINA Embroidery Software V7.0 sees the addition of multi-level break-apart for lettering objects. Applying the **Break Apart** function to a multi-line lettering object breaks it into a logical stitching sequence while maintaining lettering properties. Object properties can be edited separately for single lines, single words, or even single characters. Stitching sequence is

maintained. See [Breaking apart lettering for editing](#) in the Reference Manual for details.



Tip Single characters can be further broken into individual embroidery patches. Lettering properties are lost but properties of each patch can be individually modified.

Freehand calligraphy



Use Digitize > Open Freehand to draw embroidery outlines directly on screen and view a stitch simulation as they are drawn.

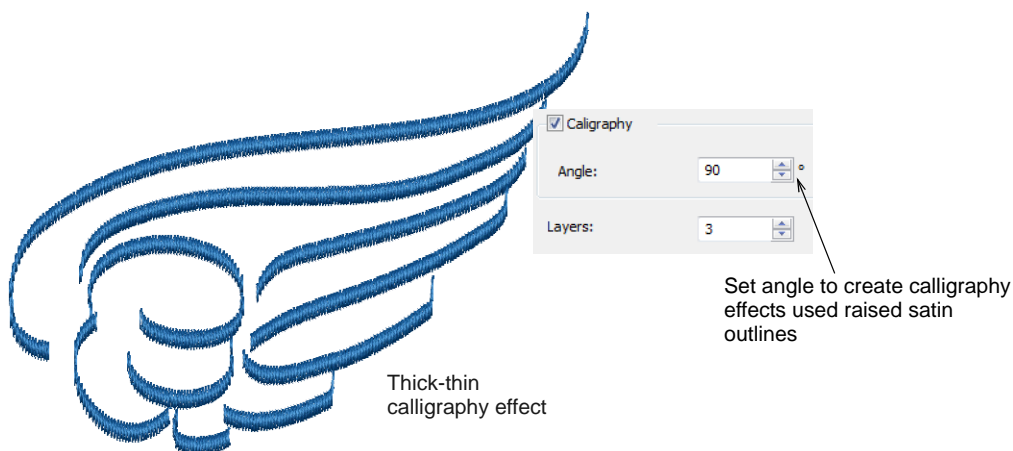


Use Digitize > Closed Freehand to draw freehand filled embroidery objects on screen.



Use Stitch > Raised Satin Outline to create raised satin borders – can be used with trapunto for quilting effects.

Combined with the new **Raised Satin** stitch **Calligraphy** setting, **Open Freehand** can be used to create embroidered calligraphy. For best results, a wider satin width and more layers than the default may be required. See [Creating freehand embroidery](#) in the Reference Manual for details.



Puffy lettering

See [Raised '3D' embroidery](#) for details.



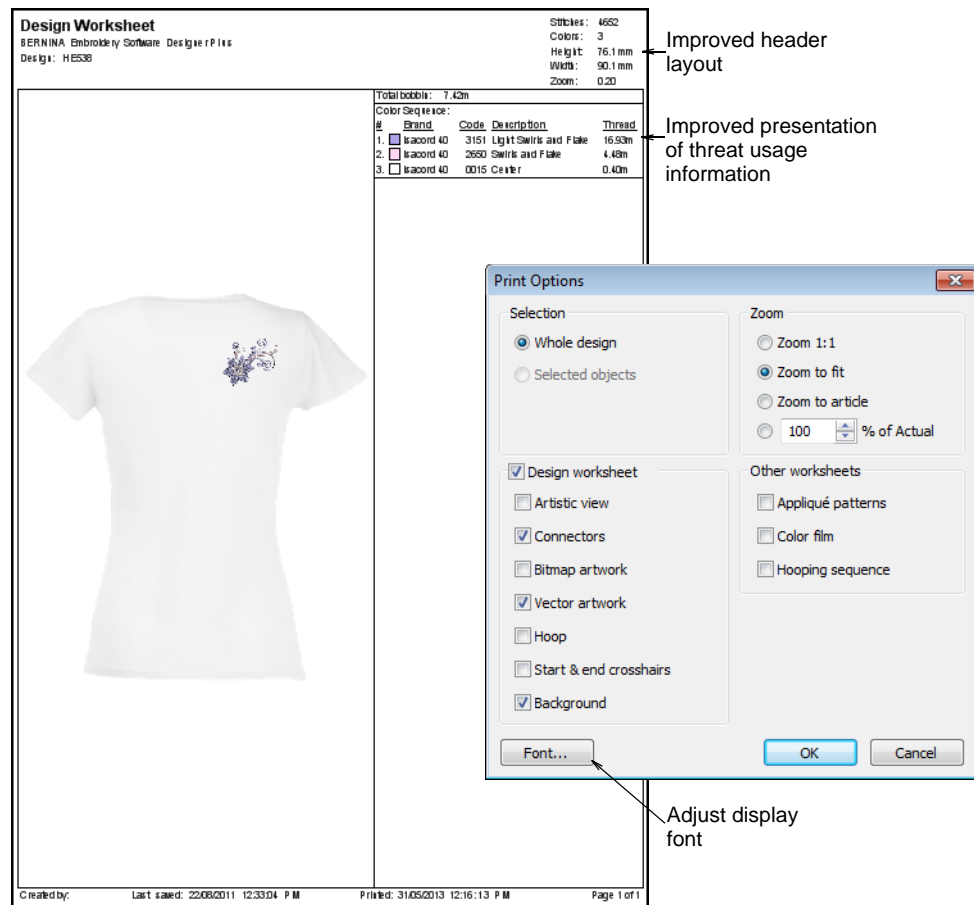
Improved design output & file handling

BERNINA Embroidery Software V7.0 offers major improvements in design output and file handling.

Improved worksheet layout

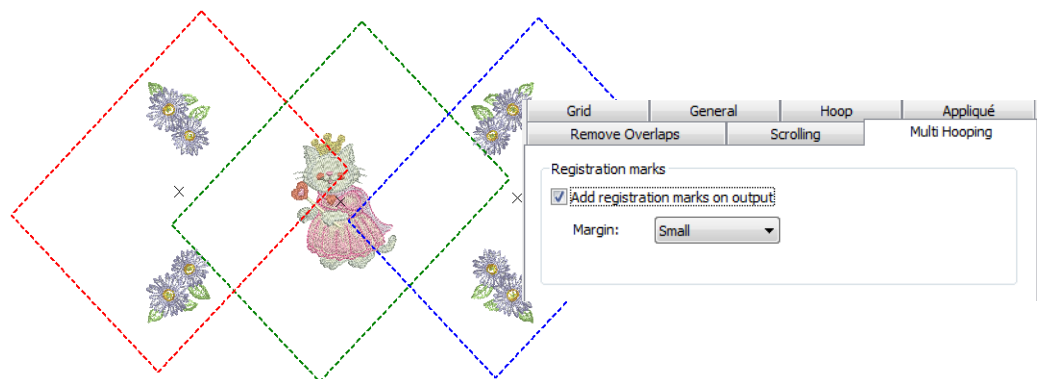
The worksheet layout was improved to that each sheet is now consistent in layout and header content. The used thread section of the main worksheet has also been improved to display in consistent columns. You are also able to select

font type and size as well as zoom factors for included articles. See also [Printing designs](#) in the Reference Manual.



Outputting multi-hooping registration marks

In order to help you correctly align multiple hoopings during stitchout, BERNINA Embroidery Software V7.0 stitches out registration marks for each hooping. These are added during output and are viewable in the production worksheet hooping list. You are now able to choose between different margins to make it easier to align different hoopings. In addition, auto-generated registration marks can be turned off if you wish to digitize them manually. See also [Outputting registration marks](#) in the Reference Manual.









Device selection

Whether outputting designs or reading designs, you now interact with devices via the new **Device Selection** dialog. See also [Reading & Writing Design Files](#) in the Reference Manual.



If you plug a USB stick into your PC, you will see four enabled icons shown above. The other two buttons are enabled once you connect to machine. This dialog is the interface to the following functions.

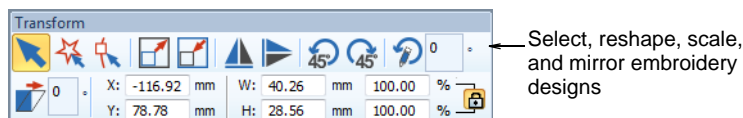
Device	Description
	Use this to: <ul style="list-style-type: none"> • Write designs in EXP format to USB stick • Read designs EXP designs from USB stick.
	Use this to load the design to machine ready for stitching.
	Use this to: <ul style="list-style-type: none"> • Write design to machine, or USB stick plugged into machine • Read designs from machine, or USB stick plugged into machine.
	Use this to: <ul style="list-style-type: none"> • Write EXP design to memory card for deco 330/bernette 340 deco, or USB stick for bernette 340 deco • Read EXP design from memory card for deco 330/bernette 340 deco, or USB stick for bernette 340 deco.
	Use this to: <ul style="list-style-type: none"> • Write EXP design to artista 165 to artista 185 or serial Reader/Writer Box • Read EXP from artista 165 to artista 185 or serial Reader/Writer Box.
	Use this to: <ul style="list-style-type: none"> • Write design in artista 200/730(ART V4) format to USB stick • Read artista 200/730(ART V4) design from USB stick.

Usability improvements

BERNINA Embroidery Software V7.0 offers major improvements in system usability.

Transform toolbar

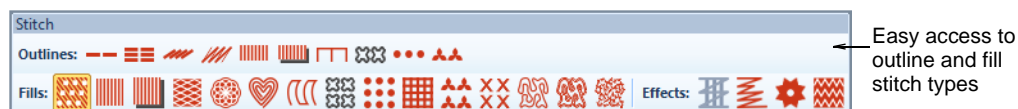
A new **Transform** toolbar was created to better support editing operations. This toolbar contains all the tools you need to select, reshape, scale, and mirror embroidery designs in **Embroidery Canvas** mode. See [Transform toolbar](#) in the Reference Manual for details.



Note that this toolbar replaces the old **General** tab in the **Object Properties** dialog. One of the main uses of this toolbar is make it much easier resize whole designs with the scaling controls.

Stitch & Effects toolbar

The improved **Stitch & Effects** toolbar makes it possible to switch between outlines and fills, and change stitch types with a single click. See [Stitch toolbar](#) in the Reference Manual for details.



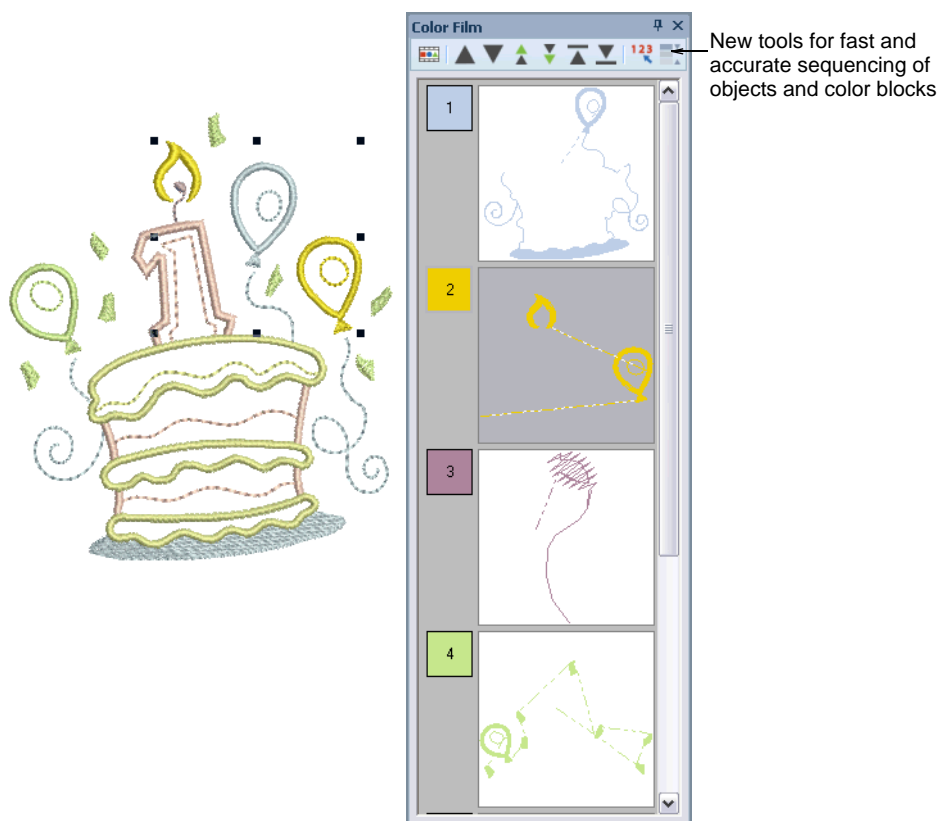
Color palette

The improved **Color Palette** includes new color selection, color fill, and color cycling tools. See also [Customizable scroll wheel behavior](#).



Easy resequence tools in Color Film

The **Color Film** now includes easy-to-use tools to resequence objects or color blocks inside the docker. See [Sequencing with the Color Film](#) in the Reference Manual for details.



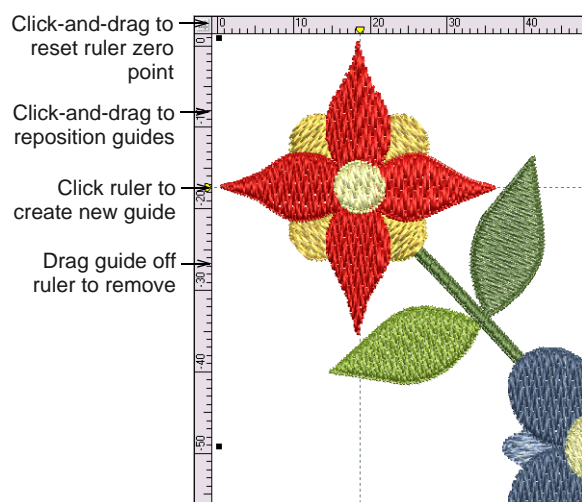
Rulers & guides



Click View > Show Rulers and Guides to show or hide rulers and guides. Right-click for settings.

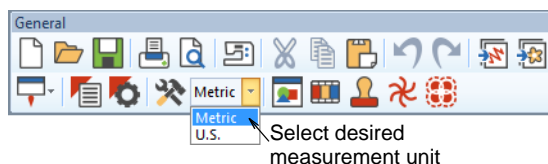
The software now allows you to turn rulers on and off and create guides for more accurate digitizing. These make it possible to accurately position and size objects and whole designs. The unit of measurement – mm or inches – defaults to the regional settings in the MS Windows® Control Panel. These, however,

can be changed from within the software. See also [Hoops, grids & rulers](#) in the Reference Manual.

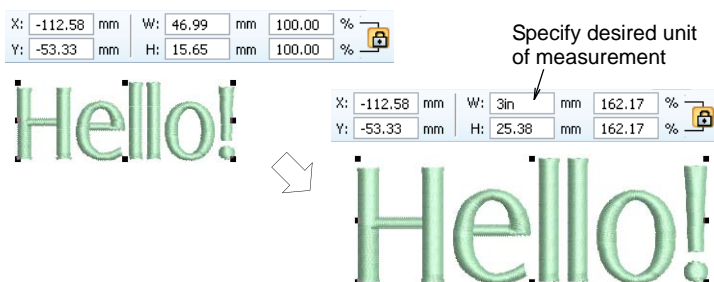


Setting measurement units

The first time you run BERNINA Embroidery Software, the measurement system will default to whatever the operating system is using. The measurement system may be changed via the new droplist on the **General** toolbar:

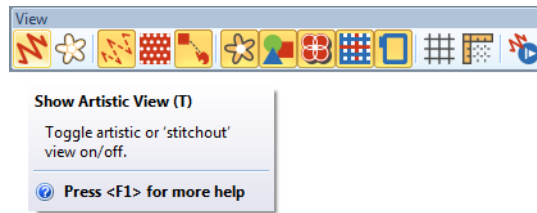


As an alternative to changing the overall measurement system used in BERNINA Embroidery Software, you can specify units of measurement when typing values into a measurement control. The software automatically converts the entered value into the units of the control. See also [Setting measurement units](#) in the Reference Manual.



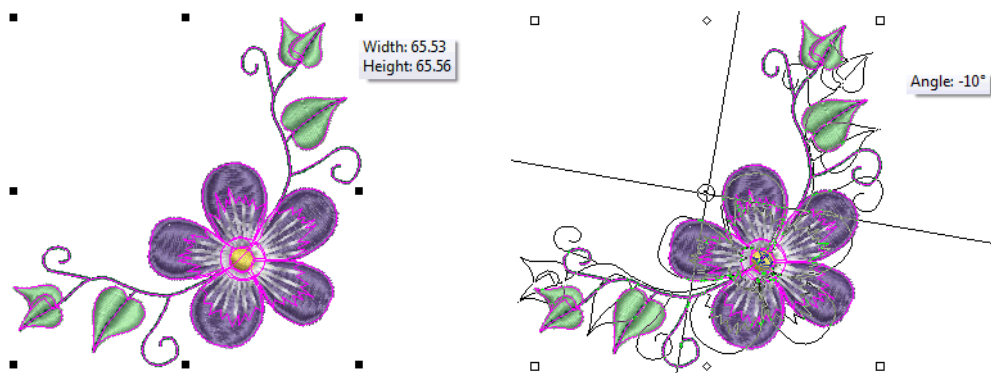
Extended tooltips

BERNINA Embroidery Software V7.0 provides extended tooltips which explain more precisely what each tool is used for. An <F1> keypress accesses context-sensitive help.



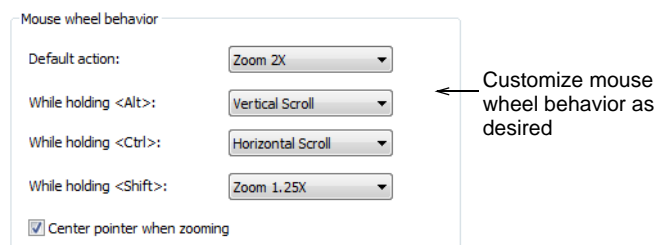
Rotate & skew tooltips

Tooltips are now provided for all transformation functions – **Resize**, **Rotate** and **Skew**. See also [Arranging & Transforming Objects](#) in the Reference Manual.



Customizable scroll wheel behavior

Previous mouse scroll wheel behavior only allowed you to zoom in and out on the design window. The software now allows you to customize behavior to suit your digitizing style. See [Setting auto scroll options](#) in the Reference Manual for details.



Default zoom behavior was revised. Previous mouse wheel behavior:

- ▶ Default action: Zoom 2X
- ▶ While holding Shift: Zoom 1.25X

New mouse wheel behavior:

- ▶ Default action: Zoom 1.25X
- ▶ While holding Shift: Zoom 2X

Other improvements

BERNINA Embroidery Software V7.0 offers miscellaneous other improvements detailed below.

Faster startup

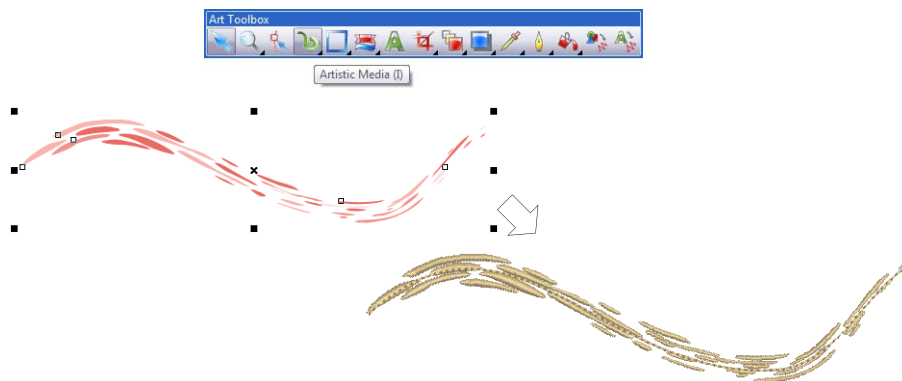
The software now starts up much faster. Whereas V6 software took 28 seconds to start up on a PC with recommended specs, BERNINA Embroidery Software V7.0 takes around 14 seconds. Gains vary depending on PC specifications.

Closed fill object recognition

When recognizing stitch files, BERNINA Embroidery Software V7.0 now recognizes closed fill objects. Previously, all objects that were not run objects were recognized as block digitizing objects only. See also [Opening design files](#) in the Reference Manual.

Artistic Media conversion

Artistic Media is now converted to embroidery as you might expect. As long as the vector object has a fill and/or an outline, BERNINA Embroidery Software will attempt to convert it.



Magic Box

Magic Box lets you convert between designs saved in a variety of 'non-native' formats. This technology is no longer supported.



Improvements in BERNINA V7.oN

The BERNINA V7.0N Update contained the following fixes and improvements. These are incorporated into the multi-language release.

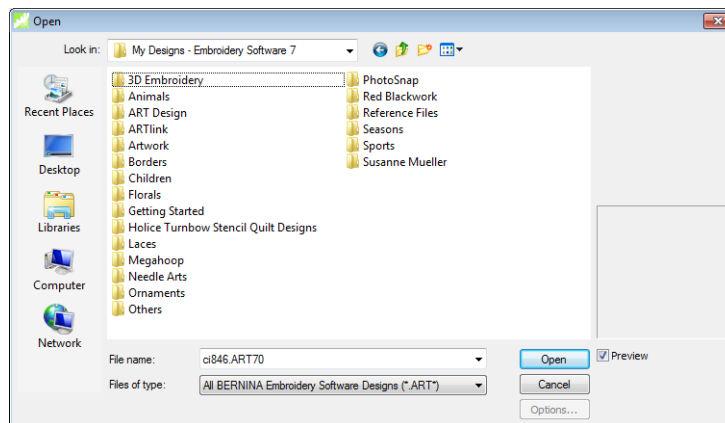
Graphics & designs

Corel graphics saved with ART70 files

Previously, users were unable to load Corel graphics from saved ART70 files containing vectors unsupported by BERNINA Embroidery Software. When switching to **Artwork Canvas**, for instance, text objects were converted to curves and gradient fills were lost. This issue was resolved with the V7.0N Update.

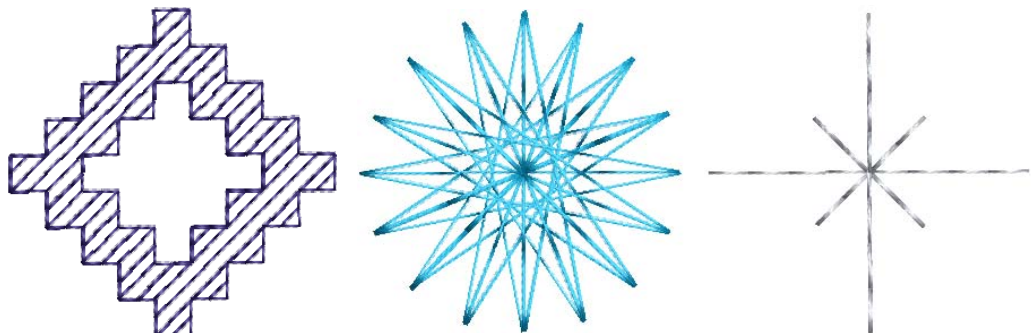
Additional BERNINA sample designs

More sample designs have been added with the BERNINA V7.0N Update. New stock designs appear under 'My Designs'.



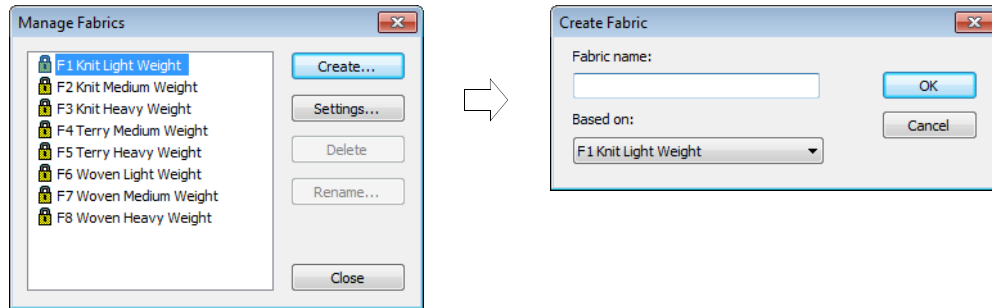
Pattern stamps using Candlewicking, Blackwork, and Lacework

The ability to pattern stamp from Candlewicking, Blackwork, and Lacework was added with the V7.0N Update.



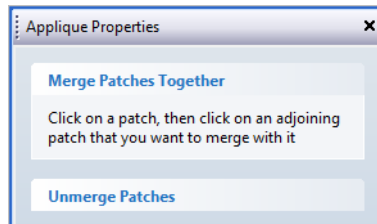
Creating custom auto-fabrics

BERNINA Embroidery Software now provides the ability to create custom auto-fabrics. See [Managing fabrics](#) in the Reference Manual for details.



Merging patches with Advanced Applique

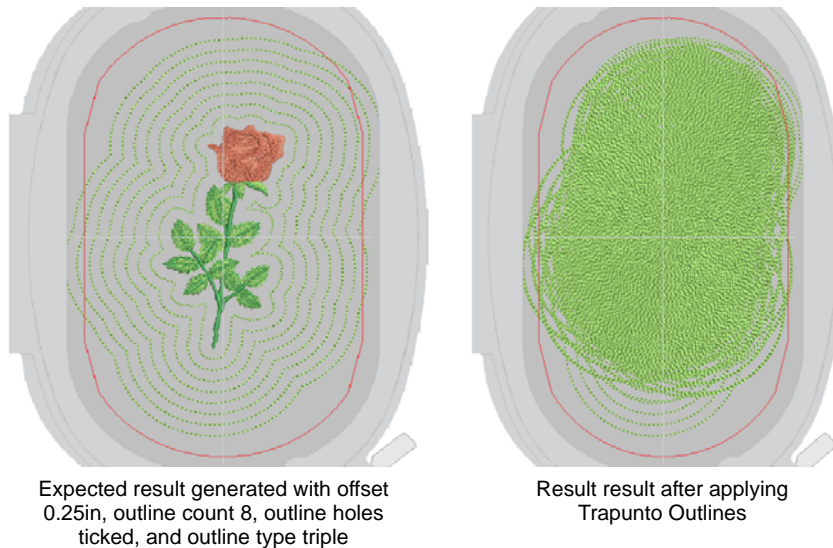
Crashes have been reported when using the **Merge Patches** function with **Advanced Appliqué**. This issue was resolved with the V7.0N Update.



Stitch quality & effects

Design outlines with Trapunto

The **Outline Design** feature did not work as expected after applying **Create Trapunto Outlines**. This issue was resolved with the V7.0N Update.



Stitch spacing & fabric settings

Due to fabric settings, stitch spacings changed when loading designs via **File > Insert Embroidery**. Open-step stitching was lost since the setting went

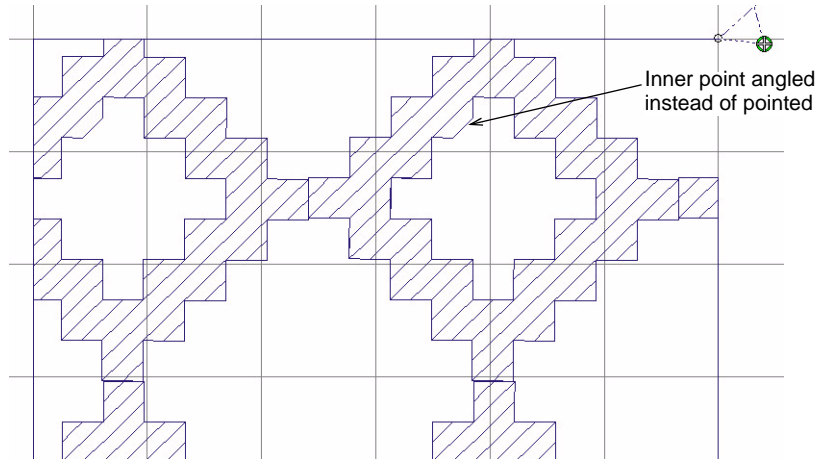
from 4mm to .40mm (fabric default). This issue was resolved with the V7.0N Update. Current spacing is no longer lost when inserting designs.

Slant angle of zigzag underlay

The slant angle of zigzag underlay defaulted to 30° when opening ART V6 or earlier files in V7. This sometimes caused underlays to extend outside the boundary. This issue was resolved with V7.0N Update.

Blackwork runs

Blackwork Run sometimes produced unexpected results. This issue was resolved with the V7.0N Update.

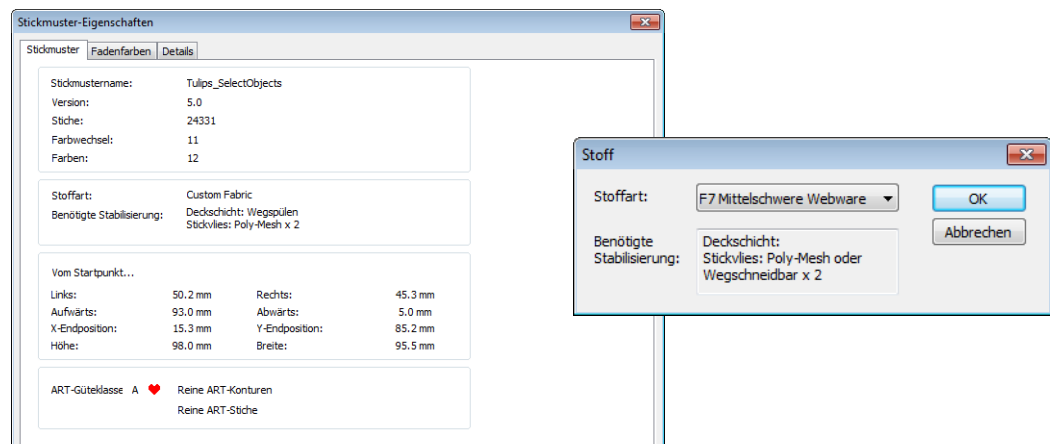


Step stitch spacing limitation

In BERNINA V6, the maximum value for **Step Fill** spacing was 100mm. With V7, stitch spacing was given a hard limit of 12.7mm. Values exceeding the limit defaulted to 0.45mm. Some embroiderers, however, like to work with special effects using larger spacings. Large values may be used for creating grid quilting designs. With V7.0N Update, the spacing limitation was removed.

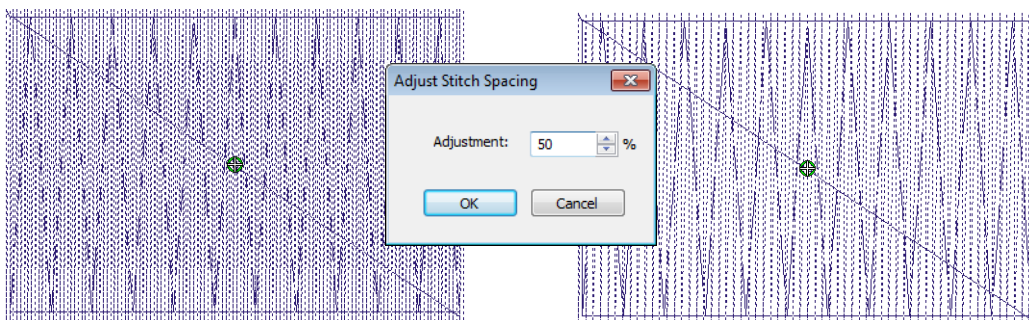
Topping and backing information

Topping and backing information previously appeared only in English in the **Design Properties** and **Fabric** dialogs. These details are now displayed in all supported languages.



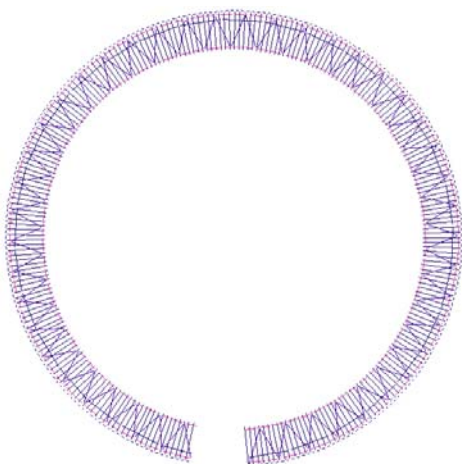
Changing stitch spacing by percentage

Bernina V7 now allows users to change stitch spacing by percentage for specific stitch types. See [Adjusting stitch densities](#) in the Reference Manual for details.



Pull compensation with StumpWork borders

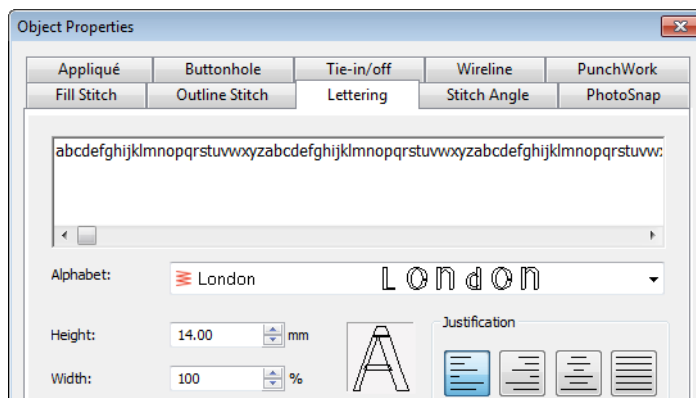
Pull Compensation was not previously applied by default to StumpWork Border with Wireline or Satin or Blanket embroidery. This issue was resolved with the V7.0N Update.



Lettering

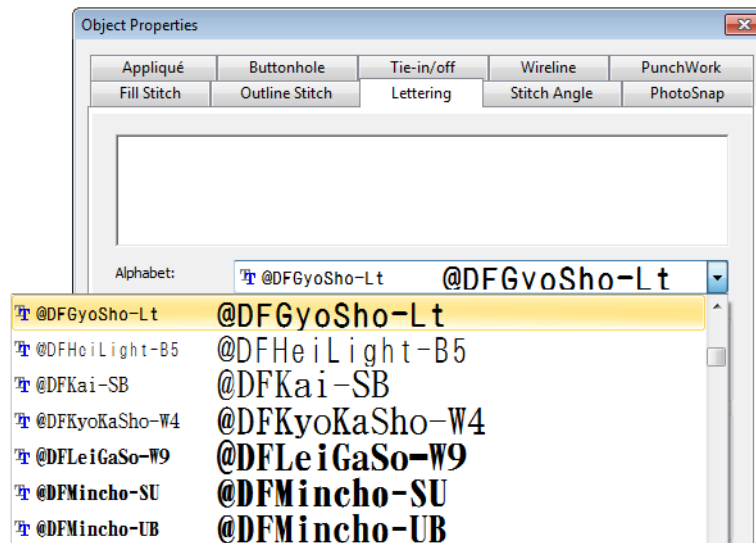
Number of characters enterable in the Lettering dialog

The Lettering dialog now allows a greater number of characters to be entered.



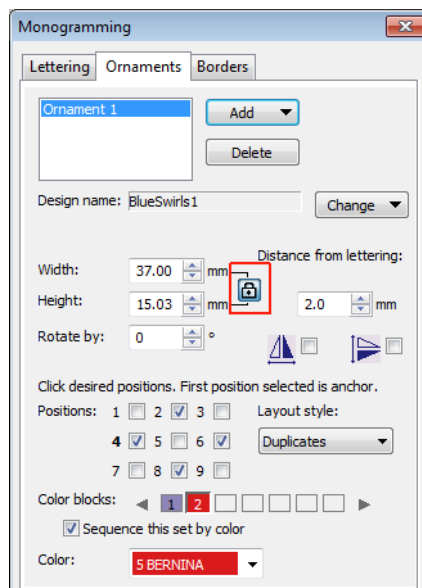
Lettering dialog crashes with large numbers of TTF fonts

Lettering dialog crashes were reported where there are large numbers of TrueType fonts (more than 2500 TTF fonts) installed on the system. This issue was resolved with the V7.0N Update.



Lock aspect ratio with monogram ornaments

The **Lock Aspect Ratio** function did not always produce expected results for monogram ornaments. This was due to the fact that design size was limited to a maximum of 100mm in the **Ornaments** tab in X or Y directions. The 100mm limitation in sizing was removed with the V7.0N Update.



Embroidery threads

Various thread charts were added with the BERNINA V7.0N Update.

Timeless thread chart

The new **Timeless** thread chart has been added.

Thread chart: Timeless Print... Create/Modify...

Code	Brand	Description
10100	Timeless	Pale Pink
10101	Timeless	Rose Quartz
10103	Timeless	Petal Pink
10106	Timeless	Carnation Pink

Search: ☒ Code ☐ Description

Match Assign Match & Assign All

Updated Isacord 40 thread chart

An updated Isacord 40 thread chart has been added. The new Isacord chart includes corrected RGB values.

Thread chart: Isacord 40 wt-numerical Print... Create/Modify...

Code	Brand	Description
0010	Isacord 40	Silky White
0015	Isacord 40	White
0017	Isacord 40	Paper White
0020	Isacord 40	Black

Search: ☒ Code ☐ Description

Match Assign Match & Assign All

New Floriani thread chart

The new **Floriani** thread chart has been added.

Thread chart: Floriani Print... Create/Modify...

Code	Brand	Description
700	Floriani	Mars Red
1514	Floriani	Light Bronze
702	Floriani	Fire Engine Red
703	Floriani	Ruby Red

Search: ☒ Code ☐ Description

Match Assign Match & Assign All

Hoops

Hoop display order

The order of hoops as displayed in the product has changed to better accommodate existing and new hoops. The default hoop is 'BERNINA Large Oval Hoop, 255 x 145, #26 (template violet)', (previously the 'artista 255 x 145 Oval' hoop).

Legacy hoops

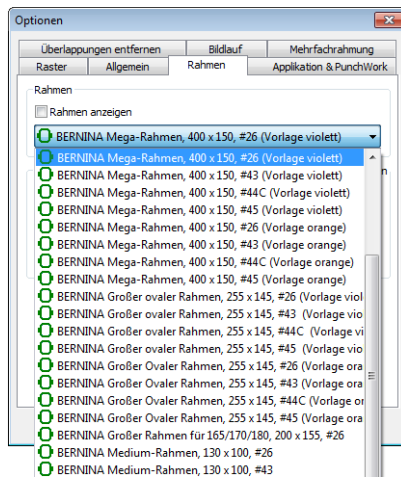
Any hoop not explicitly named in the list is considered 'legacy' – this includes hoops 'w/X-Y lines' and 'w/Grid'. Such hoops are no longer shown in the list, except when opening old designs, and cannot be chosen for a new design. Opening an old design with a legacy hoop will generally show the old hoop name in the list, and display the hoop itself as it was in V6.

Long hoop name display

To make sure longer names can be properly accommodated, the droplist was widened as shown:



Hoop names sometimes get truncated when switched to German. The widened droplist accommodates most names now.



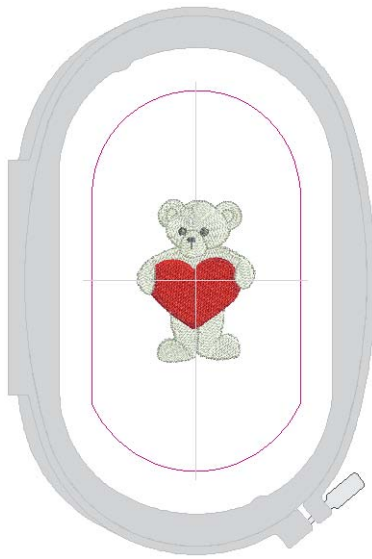
New embroidery areas for existing hoops

BERNINA has revised some embroidery areas of existing hoops due to machine issues. Different embroidery areas have also been added to some older hoops in order to deal with different foot sizes that result.

X-Y line hoops

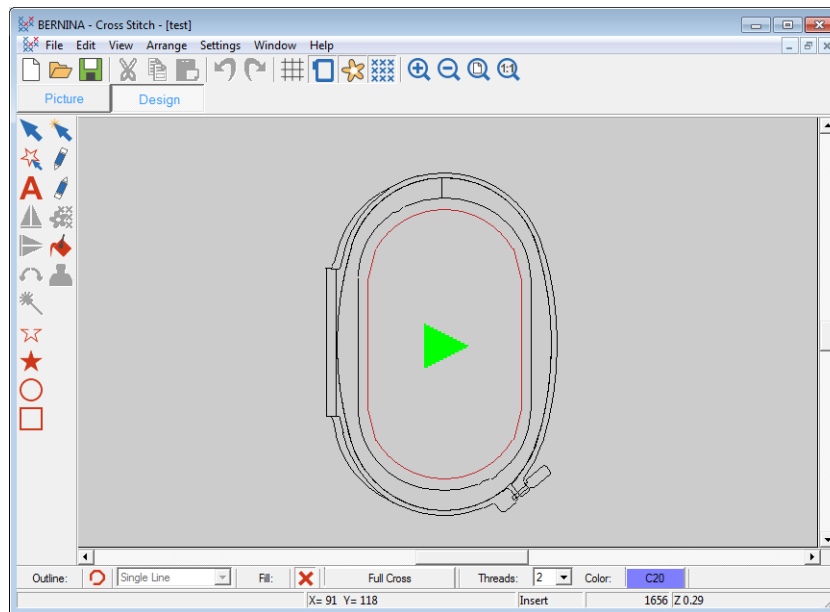
All BERNINA hoops in V7 automatically show X-Y lines, so the distinction between 'hoop' and 'hoop w/X-Y lines' is now irrelevant. When loading the old designs containing hoops w/X-Y lines – e.g. 'artista 255 x 145 Oval w/X-Y lines'

- the hoop is changed to corresponding 'normal' hoop – 'artista 255 x 145 Oval' – or its renamed equivalent. X-Y lines are shown anyway.



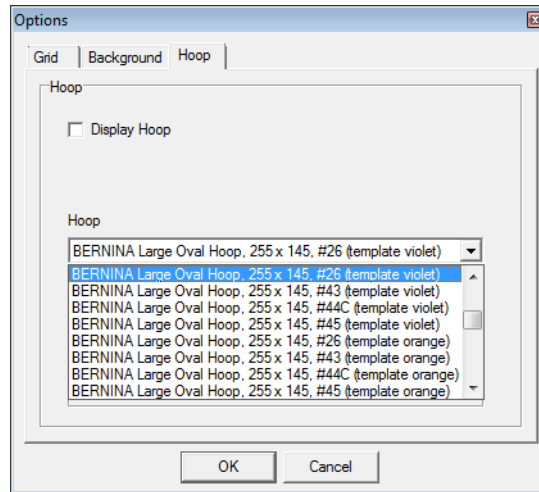
Cross stitch default hoop

The default hoop in **Cross Stitch** was incorrect and not correctly centered. This issue was resolved with the V7.0N Update.



Hoop names in Cross Stitch

Hoop names appear truncated in Cross Stitch. This issue was resolved with the V7.0N Update.



Default hoop selection

A hoop is not selected by default after installing BES V7.0M Update, preventing the software from saving the design or sending it to machine. This issue was resolved with the V7.0N Update.

System improvements

Sending designs to Machine/Card

Problems have been reported when sending some designs via Write to Machine/Card. Specifically, the error message 'Failed to load XML string' appears and the design does not get saved to external media. This issue was resolved with V7.0N Update.

V7 EditorPlus to V7 DesignerPlus upgrade

The process by which customers order access codes for a V7 EditorPlus to V7 DesignerPlus upgrade, has caused some confusion. The order form and process have been streamlined for easier use.

Updated German resource strings

Updated German resource strings are included in the V7.0N Update.

Loading XML strings when sending designs to machine

Problems when sending some designs to machine have been reported in regards to the correct loading of XML strings. This issue was resolved with the V7.0N Update.

Contents of BERNINA Embroidery Software V7.0

The BERNINA Embroidery Software V7.0 kits include some or all of the following components:

- ▶ BERNINA Embroidery Software V7.0 Installation DVD
- ▶ USB dongle with tag attached
- ▶ BERNINA Embroidery Software V7.0 Quick Start Guide

Product levels

There are two BERNINA Embroidery Software product levels:

- ▶ BERNINA EditorPlus
- ▶ BERNINA DesignerPlus

CorelDRAW® Essentials 6

BERNINA Embroidery Software V7.0 continues to provide seamless integration with CorelDRAW®, the most popular vector-based drawing package for home users. For this reason, the combines the embroidery capabilities of BERNINA Embroidery Software with the graphical capabilities of CorelDRAW® Essentials 6.



Note The same BERNINA Embroidery Software installation DVD includes software for **all** products, including BERNINA DesignerPlus, BERNINA EditorPlus, BERNINA Portfolio, BERNINA Cross Stitch and Quilter.

System requirements

Check that your PC meets the system requirements required of BERNINA Embroidery Software. Check CPU/RAM as well as hard disk space. The table below describes minimum system requirements.

Item	Minimum
CPU	Intel® Pentium® 4, AMD Athlon™ 64 or AMD Opteron™
OS	‡ Windows® XP SP3 (32-bit)
Browser	I.E. 7.0 or later
Internet connection	Required for installation, product registration and access to software updates.
Memory	1 GB (32-bit) or 2 GB (64-bit)
Hard disk size	40 GB
Free disk space	† 20 GB
Graphics card	Support for Highest Color (32bit) and resolution 1280 x 1024
Monitor	¥ 17" at native resolution of 1280 x 1024
Scanner, printer and plotter	Windows-compatible (any connection method – e.g. parallel, USB)
USB ports	Dedicated USB port for a USB dongle
Mouse	USB mouse
Data drives	DVD-ROM drive for software installation

Item	Minimum
Sound card	Required for multimedia training

Supported operating systems ‡

- ▶ Although Windows XP (32bit) is supported, Wilcom highly recommends that you consider updating to Windows 7 or Windows 8.
- ▶ For latest operating system information, visit the Wilcom Support Center at www.wilcom.com.au/support.

Free hard disk space †

BERNINA Embroidery Software occupies up to 1Gb of hard disk space, depending on the options installed.

Screen resolution ¥

Some controls may be hidden on the user interface if you run your monitor at low resolutions. The physical size of your monitor will have a bearing on the optimum screen resolution. Larger fonts will exacerbate the problem. If you experience visibility issues, try adjusting both screen resolution and font size. For example, a resolution of 1280 x 720 with a font size of 100% or 125% should be acceptable.

Security device

BERNINA Embroidery Software is controlled by a security device or 'dongle' attached to the computer, in conjunction with security access codes entered into the software. Each dongle has a unique serial number and identity code so your system can be uniquely recognized.



USB Port Dongle



Caution Do not attach your dongle until requested on screen by the software installation. Otherwise the generic USB drivers will be used and will prevent the correct working of the security system.

All purchases of the latest software release, whether new or updates, are shipped with a USB type dongle. Whenever you update your software, you need to carry out a 'brain transplant' from your previous dongle to the latest one. Parallel port dongles are no longer provided or supported by the brain transplant. See Installation Notes in the Quick Start Guide for details.



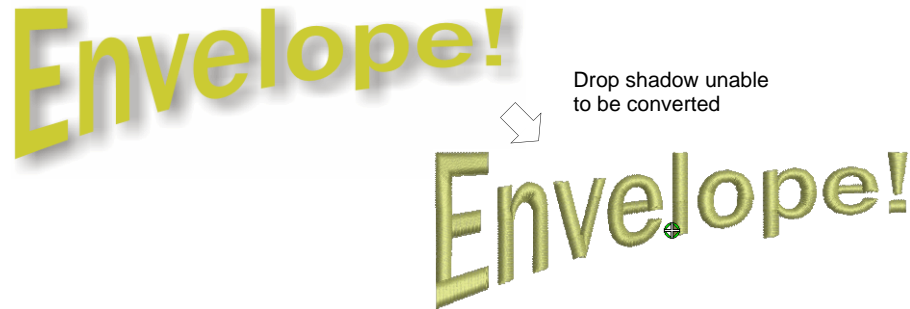
Caution If the dongle is removed or loses connection while you are working in BERNINA Embroidery Software, error messages will display. Cancel the messages, then exit BERNINA Embroidery Software. You will lose any unsaved changes to your design. Re-attach the dongle to your computer, making sure that it is firmly secured, then restart BERNINA Embroidery Software.

Known limitations in BERNINA Embroidery Software V7.0

The following are known limitations in BERNINA Embroidery Software V7.0.

Conversion of artistic media

There are some limitations when converting some CorelDRAW® vectors to embroidery. Vector special effects, such as drop shadow, contour, and transparency, do not convert well as there is no equivalent embroidery effect. Enveloped text and **Fountain** or **Mesh** fills do not always give the expected result either.



However, as long as the vector object has a fill and/or an outline, BERNINA Embroidery Software will attempt to convert it. But if there is no embroidery equivalent, the object is converted with solid colors only. Enveloped text is converted to embroidery objects rather than embroidery text. See also [Converting vectors to embroidery](#) in the Reference Manual.



Tip A workaround is to break apart any 'special' vector objects using the **Arrange > Break Apart** command in **Artwork Canvas**. In most cases, you will get a result, but it may not be exactly the one you want.

Browser security settings

You may upgrade your software directly via the internet. If browser security is set too 'high', you may be unable to download software updates. If you experience this problem, try setting browser security to 'medium'.

PhotoSnap

- ▶ The **Mirror Merge** feature is not intended to be used with **PhotoSnap** designs. Objects are not placed in the correct mirrored position.
- ▶ Some PhotoSnap designs, when sent to a BERNINA artista 200 machine, may produce **Out of Memory** errors. It is recommended that the photograph or image be removed from the design before sending to the machine.
- ▶ When opening a **PhotoSnap** design created in BERNINA artista V3 or V2, it will open correctly. However, if the design is resized, excessive stitches are generated. To regenerate stitches, producing a better result and lower stitch count:
 - ▶ Select and double-click the **PhotoSnap** object.
 - ▶ Select **PhotoSnap** tab in the **Object Properties** dialog.
 - ▶ Adjust the **Resolution** setting and click **OK**.



Note After generating the stitches, the stitch angle of the object is greater than the stitch angle for a comparable V7.0 PhotoSnap object.

Gradient Fill limitations

Gradient Fill is subject to the following limitations

- ▶ You cannot use **Gradient Fill** and **Travel on Edges** at the same time with Block Digitized objects. When applying **Gradient Fill** to a block digitized object, the system will automatically turn off Travel on Edges and vice versa.
- ▶ Adding a holes to a Block Digitized object will destroy any **Gradient Fill** effect applying.

See also [Creating gradient fills](#) in the Reference Manual.

Stitching out elastic lettering

When sending a design that contains a single lettering object with **Elastic Lettering** applied, an **Out of Memory** error is generated when selecting the design after sending. The workaround is to use the **Break Apart** tool which will turn the lettering into embroidery patches – i.e. it is no longer a lettering object. Alternatively save as EXP and send to machine as an EXP file. See [Creating 'elastic lettering' effects](#) in the Reference Manual for details.

Wave Effect stitch angles

Don't alter stitch angles after applying **Wave Effect** as it can displace **Fancy Fill** patterns.

Zoom factors in Artwork Canvas

The zoom factors in **Artwork Canvas** of **To Page**, **To Width** and **To Height** do not work the same as in standalone CorelDRAW® Essentials 6.

Design file formats

Some designs created in BERNINA Embroidery Software and saved in PES format may not be readable by other machines. See [Writing designs to machine](#) in the Reference Manual for details.

Multi-hooping large areas of Step fill

Large areas of **Step** fill with stitch spacings of 1 mm or more cannot be split using the **Splitting Guide**. Attempting to split these objects may give you an **Out of Memory** error.

Saving split designs to earlier versions

Saving split designs to earlier versions of ART file may create a large number of manual stitch objects which will have scaling limitations in earlier versions of the software.

Saving objects with added stitch angles

Saving objects which have had stitch angles manually added to earlier ART file versions can cause problems when changing underlays in earlier versions of the software.

PCM and EMD file formats

The newly supported PCM and EMD file formats may not convert exactly as expected. If not, you will need to save to another format supported by your machine.

Monogram TrueType fonts and characters

Monogramming does not work with all TrueType fonts and characters. For example:

- ▶ On MS Windows® XP SP2 English with East Asian language support, most unicode characters (including Kanji characters) are generated as '?' characters.
- ▶ On MS Windows® XP SP2 Chinese Traditional the situation is better, however some characters still generate outlines as '?' characters.



Tip Character outlines are generated correctly, however, when you create ordinary lettering or monogramming objects using the **Name** field instead of **Initials** fields. See [Creating monogram lettering with names](#) in the Reference Manual for details.

BERNINA Cross Stitch

If BERNINA Cross Stitch has been left open for a while without being used, a message displays asking if you want to save your design. Click the **Cancel** button to keep BERNINA Cross Stitch open and continue working. Click the **Save** button to save the current design and close BERNINA Cross Stitch.

BERNINA Portfolio

- ▶ When viewing converted files in BERNINA Portfolio for DST and EXP, design connectors are displayed in thumbnail view.
- ▶ In this version, it is not possible to export Tab and CSV (Comma Separated Value files) formats for use by spreadsheets.
- ▶ When reading a memory stick in BERNINA Portfolio, the icon appears in the folder tree as a floppy disk. When you select it, the contents do not display immediately. Right-click the icon and select **Refresh Display** – the contents are then displayed correctly in the folder tree.