

Update of the BERNINA Q-matic System Software and the BERNINA Q 20 / Q 24 Firmware

To update the Q-matic system software and machine firmware two steps are necessary in the following sequence:

- A. Install the Q-matic Software Package on the Touch PC
- B. Update the BERNINA Q 20 / Q 24 Firmware

A. Install the Q-matic Software Package on the Touch PC

Part A will install all necessary software updates for the Q-matic system:

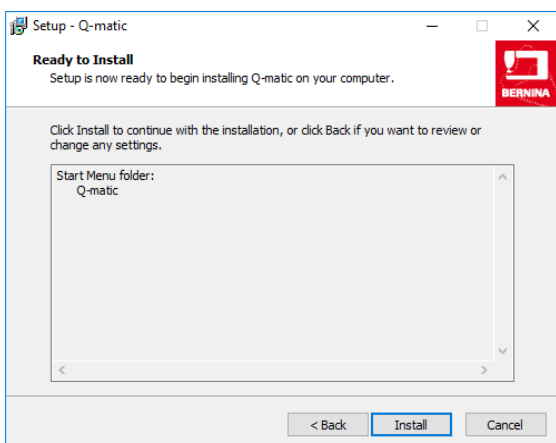
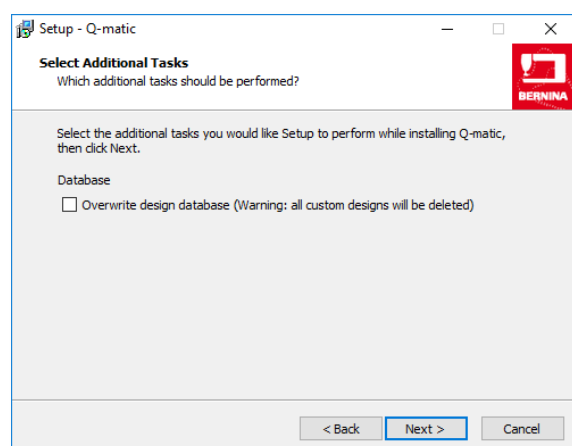
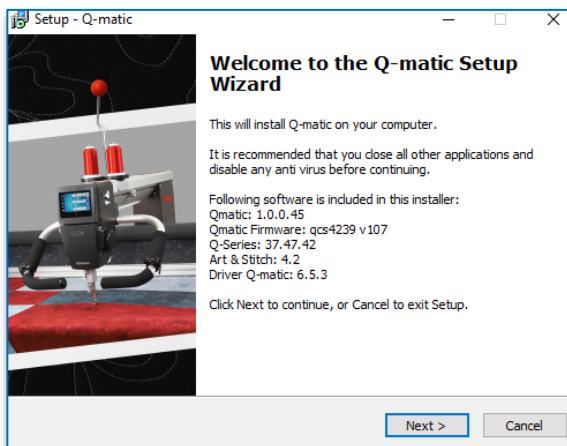
- Q-matic PC application version 1.0.0.45
- Q-matic controller firmware version qcs4239r107

Tip: The installer will not alter or delete any of your personal quilt designs on your PC. Nevertheless, it is strongly recommended to create a backup of your current quilt design database before the installation process starts. The necessary steps are described in the Q-matic user manual.

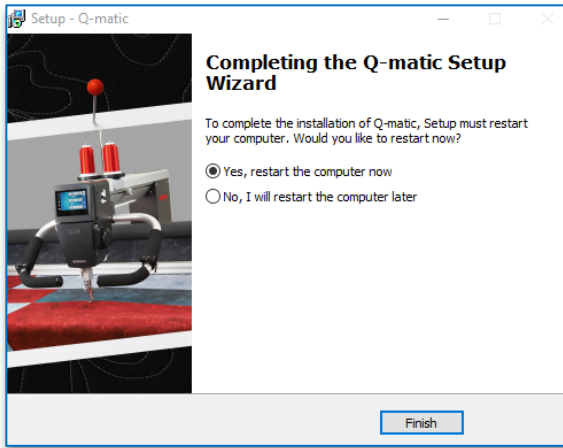
To install please proceed with following steps:

1. Download the installer on a separate PC (BERNINA_Q-matic-PC-Setup_1.0.0.45_C.zip)
2. Unzip the installer onto an empty BERNINA USB stick.
3. Plug the USB stick in one of the available USB ports of your Q-matic PC.
4. Open the folder of the USB stick. Wait until the file on the stick has been recognized. This may take a minute.
5. Make sure the control cabinet is powered on and is properly connected to the PC (check green status LED of the control cabinet).
6. Start the Installer: Q-matic-1.0.0.45-qcs4239r107-37.47.42-AnS4.2-FullInstaller_C.exe.
7. Click **“Yes”** when asked whether to allow the changes made by this installer.
8. Follow the messages of the installer and use all the default settings during the installation process! This may take several minutes.

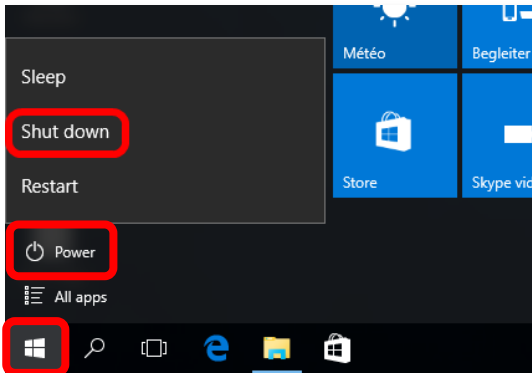
(Just some of the messages are shown below. Additional ones may appear! Please use in any case the default settings)



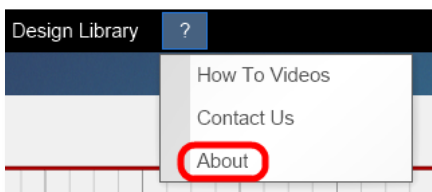
- Use the default setting “**Yes, restart the computer now**” and finish the installation process.



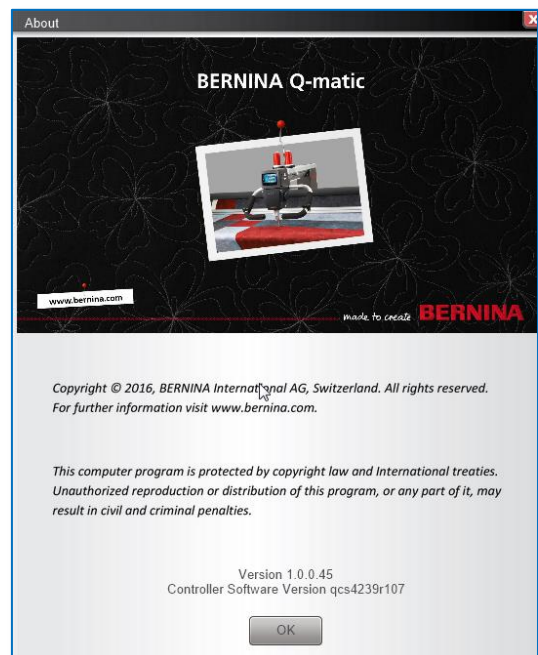
- Open the Q-matic software.
- In case the controller has not been updated yet, please follow the instructions on screen and use all default settings.
- Close the Q-matic software.
- Manually shut down Windows and wait until the PC is completely powered down.



- Switch off the control cabinet by means of the main switch. (Do not use the emergency button!)
- Switch on the control cabinet and afterwards the PC.
- Start Q-matic.
- Check the correct software and firmware versions in “**About**” of the Help menu:

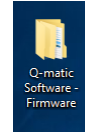


- Q-matic software version: **1.0.0.45**
- Q-matic firmware version: **qcs4239r107**

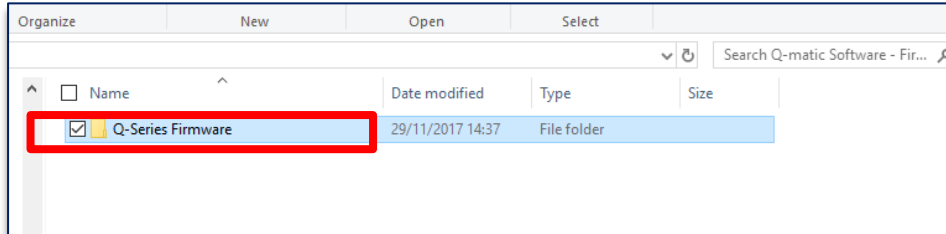


B. Update the BERNINA Q 20 / Q 24 Firmware

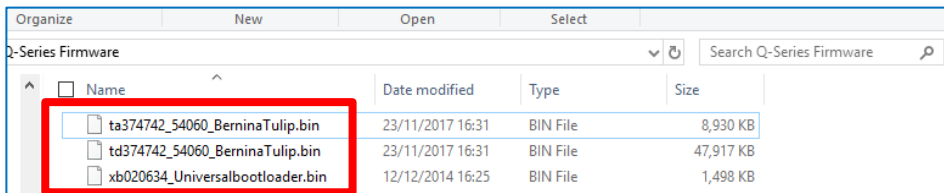
Part B will install all necessary firmware files on your BERNINA Q 20 / Q 24:



1. The installer created a folder “Q-matic Software-Firmware” on your Q-matic PC. Open folder.
2. Open the sub folder “Q_Series Firmware”.



3. Copy the three *.bin files (*ta374742_54060_BerninaTulip.bin*, *td374742364912_37172_BerninaTulip.bin* and *xb020634_Universalbootloader.bin*) onto your BERNINA USB stick. Plug stick into the USB slot of your BERNINA Q 20/Q24.



4. Start the standard Q 20 / Q 24 update process by proceeding the with following steps:

- > Touch the icon «Home»:
- > Touch the icon «Setup-Program»:
- > Touch the icon «Machine settings»:
- > Touch the icon «Maintenance/Update»:
- > Touch the icon «Updating the machine»:
- > Touch the icon «Update» to start the update process:

5. As soon as the firmware update has finished, check the correct Q 20 / Q 24 firmware version on the machine: 37.47.42

