

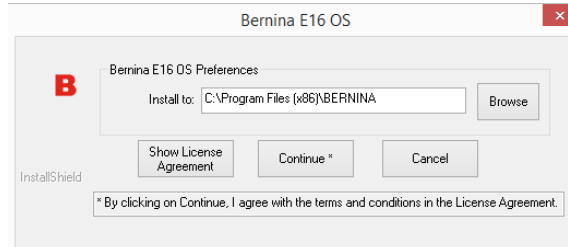


Before proceeding, please perform the following:

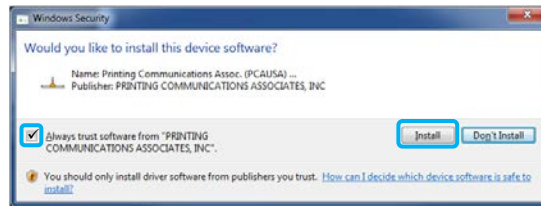
1. **Assemble Cart:** Use the enclosed "Cart Assembly" instructions.
2. **Place Machine on Cart.**
3. **Install Bernina E16 Operating System (BOS) Software:** Refer to the instructions on the next page.
4. **Follow the steps in the Help Document:**
Part 1 of the manual walks through machine setup from connecting the power cord through threading the machine.

BUI & BOS Software – First Time Installation Instructions

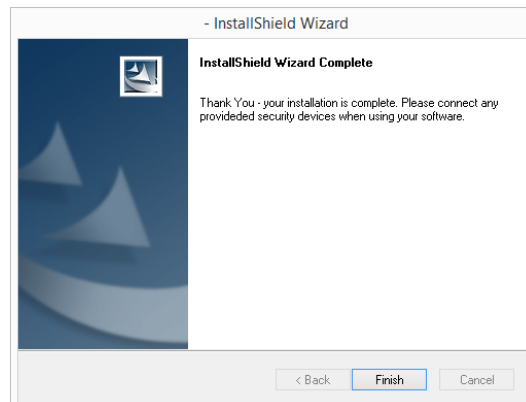
1. Insert the **software DVD** into your DVD drive.
2. The DVD will “auto run” loading the setup/install wizard. If using Windows 7 or Windows 8, you may need to select the option for “run setup.exe.”
3. A dialog box will appear. Click “Continue” to accept the License Agreement and continue the installation.



4. During installation a security popup may come up. Please check “Always trust software from “PRINTING COMMUNICATIONS ASSOCIATES, INC” and click “Install”.



5. After the installation, a final dialog box will appear. Click “Finish” to complete the installation and close the installation wizard.

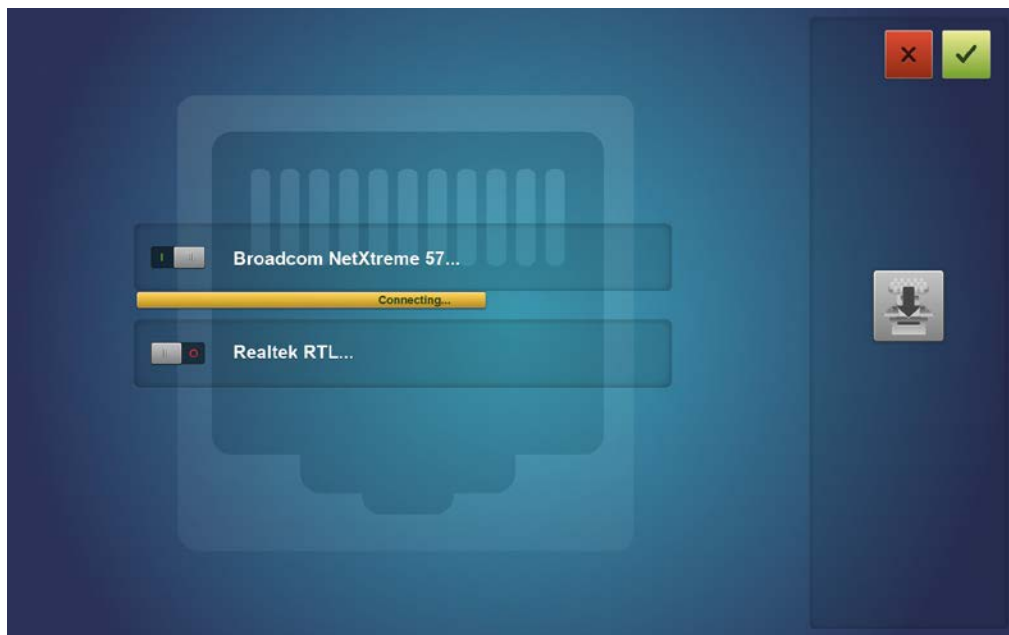


6. Install the dongle (security key) into a USB slot on your computer. The software will not run without the dongle attached to the computer.
7. Launch the software from the icon on the desktop.
8. Once the software has been launched, press the question mark icon to access the help documentation. Use the first part of the document to complete the machine setup.

Selecting The Connection

Before a connection can be established between the computer and the machine, the appropriate connection port must be selected in the software.

1. Launch the software by double tapping the Bernina E16 icon.
2. Tap the Settings button to navigate to the Settings screen.
3. Tap the Advanced Settings button to navigate to the Advanced Settings screen.



4. Select the connection the machine is going to use from the connections list by tapping the toggle to the left of the connection name. A progress bar will display the connection status.
5. As the port is connecting, move on to powering up the machine. If the machine does not completely initialize before the progress bar finishes, the status may indicate that a connection is not found. This should remedy itself after the machine fully initializes.

Initial Power Up Sequence

1. Make sure that all of the machines are turned off.
2. Make sure the software is launched and the Main Screen is being displayed.
3. Make sure the E-Stop is disengaged by turning it in the direction of the arrows.



4. Power up the machine with the power switch.



5. The software will load CSA and RSA files to the machine, and the machine will initialize and display on screen.

Please note that the first time the machine is powered up and connected to the software, it may take 90-120 seconds for the machine to fully initialize and appear on screen. The hoop arms must first move from the shipping position to the home position before the machine can initialize.
