

BERNINA E 16 User Interface V 11.01.044 - Update Release Notes

April 8, 2015

The update is intended for installation on a PC with the currently released version (**BERNINA E 16 OS 1.0.79**) or the previously released version (**16 OS 1.0.69**) already installed. It is not necessary to un-install the previous version.

Note: This update software is a full installation of the BERNINA E 16 OS and may also be used for a new installation or re-installation on a PC.

Contents

- Enhancements
- Installation Instructions
- Support

Enhancements

BERNINA UI and OS Applications

- Optimization to thread break sensor calibrations (Advanced Interface)
- Ability to update software via check for updates (need Internet connectivity)
- Addition of the following Mighty Hoops
 - 8.25" x 6.25" (21 x 15.9 cm)
 - 4.25" x 4.25" (10.8 x 10.8 cm)
 - 5.5" x 5.5" (13.5 x 13.5 cm)
 - 10" x 10" (25 x 25 cm)
 - 4.25" x 13" (10.8 x 33 cm)
 - 13" x 8" (33 x 20 cm)
 - 13" x 11" (33 x 28 cm)
 - 15" x 12" (38 x 30 cm)
 - 16" x 13" (40.6 x 33 cm)
- Addition of the following HoopTech Clamps/Frames
 - Small Shoe Clamp
 - Large Shoe Clamp
 - Red Cap Side Clamp
 - Koozie Clamp
 - Hat Back Clamp
 - Dream Frame
- Fixed issue with design displaying the previous design on main screen and simplified view.
- Increased stitch limit to 205,000 stitches.
- Fixed spelling error (paramter to parameter).
- Copyright date is now 1992 - 2015.
- During installation, the communications drivers are signed by BERNINA.
- Simplified user view. This is optimized for a touch screen Windows device.

- Two click installation of BERNINA E 16 OS.
- Time based maintenance.
- Operator's manual has been updated and is now in .pdf format.
- Updated Madeira Poly Neon Thread Chart.
- Updated Isacord 40 Thread Chart.
- Improved Icon Preview Generation.
- Fully compatible with Windows 7, Windows 8, Windows 8.1 with compatibility mode enabled.
- Simplified hoop selection by Hoop Type categories. For example: square hoops, round hoops, etc.
- Simplified Acti-feed Selection by just selecting a Product Type. For example: if the user is sewing a polo shirt, they can just select the T-shirt in Product Type.
- Simplified Position Screen. User can easily do things like rotate a design 180° by just a single click.
- Simplified Load Design Window.
- Simplified Color Sequence Window. This includes a Puff and Fancy Stitch function that can be just dragged onto the color that you want it applied to. This also includes a Color Sequence Repeat function. This can be applied when doing applications like Step and Repeat.
- New Colorization Status Bar. This allows the user to see from a distance what is going on with each machine without walking over to the PC screen.
- Presser Foot Adjustment Button.

Installation Instructions

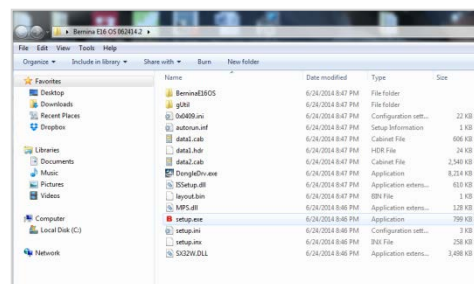
Download the [Bernina E16 OS V 1.2 Update.zip](#) file to the Desktop.

Extract / Unzip the [Bernina E16 OS V 1.2 Update.zip](#) file to the Desktop.

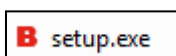
To Install the BERNINA E 16 UI / OS :

Prior to installation, disconnect PC from machine and remove dongle from PC. Failure to do so may result in damage to system and failure of files to properly install.

1. Open the unzipped **BERNINA E16 OS** folder saved on the PC desktop.

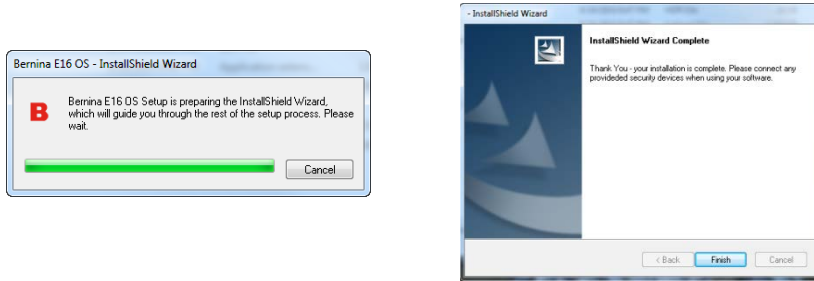


2. Locate the Setup.exe file and double click to begin the installation process.



3. If the dialogue windows open asking "Do you want to run this file?" > select **Run** (*this may happen several more times during installation, depending on your computer environment, continue to select **Run***).

- The installation will begin in the Bernina E16 OS Preference window > select **Continue** > installation process continues and when complete > select **Finish**.



- Attach the BERNINA E 16 dongle.
- Check to ensure that the Emergency Stop on the Control Panel is released.
- Open the BERNINA UI. When the “?” question mark appears on the screen, turn on the machine.
- CSA/RSA dialog flashes on screen, followed by initializing machine dialog. This will take a few minutes to complete. When complete, reload thread tree and activate Closest Match & Bobbin Detection settings.
- Machine is ready for stitching.



Support/Questions

Contact your local BERNINA Multi-needle Embroidery Dealership.

For online support, visit e16support.com.