

## **BERNINA E 16 User Interface V 1.0.79 Update Release Notes & Installation**

Dec 2, 2014

The update is intended for installation on a PC with the current release already installed:  
**BERNINA E 16 1.0.69** (consumer release version)

### **Contents:**

- **Enhancements**
- **Installation Instructions**
- **Support**

### **Enhancements**

#### **BERNINA UI and OS Application**

- For simplicity in establishing PC to E 16 connection, only Ethernet adaptors are included in the connections options (WiFi and Bluetooth adaptors do not appear).
- Left rotation button has been removed from the Move Menu.
- Design rotation not compromised, rotate based on 360 degrees.
- The 90 and 180 degree icon function changed from a degree setting to an incremental rotation.
- Corrected the "Failed to load design error" when loading a new design.
- Improved search field in color sequence screen.
- Message when loading RSA/CSA displays as "Initializing Machine".
- Removed sleep mode to eliminate machine/pc disconnect.
- Automatically checks for and verifies dongle before opening software. If not verified the application will shut down upon error acknowledgement by user.
- Emergency Stop now disables all controls.
- Improved Thread break sensor detection and sensor calibrations being saved to the machine.
- Increase stitch limit to 205K (from 150K).
- Scroll arrows gray out and become inactive when at the beginning or the end of a list.

### **Installation Instructions**

- Download the [Bernina E16 OS 2014.11.04.0.zip](#) file to the Desktop
- Extract / Unzip the [Bernina E16 OS 2014.11.04.0.zip](#) file to the Desktop

### **To Install the BERNINA E 16 UI / OS :**

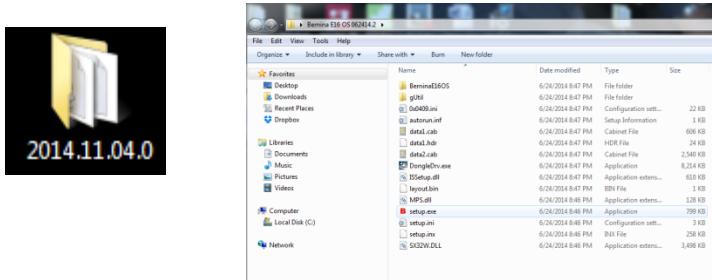
Prior to installation, disconnect PC from machine and remove dongle from PC. Failure to do so may result in damage to system and failure of files to properly install.

### **Support/Questions:**

Contact your local BERNINA Multi-Needle Embroidery Dealership.

**BERNINA E 16 User Interface V 1.0.79 Update Release Notes & Installation cont.**

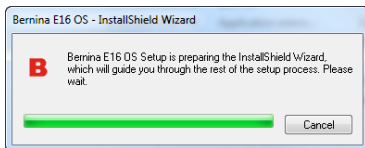
1. Open the unzipped BERNINA E 16 OS folder saved on the PC desktop.



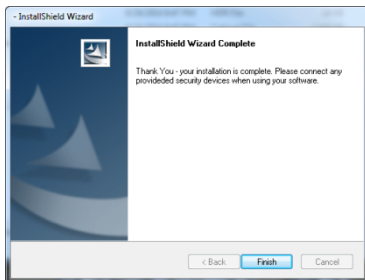
2. Locate the Setup.exe file  and double left click to begin installation process.

3. If dialogue winds opens asking “Do you want to run this file?” select **Run**. *This may occur at several points in the installation depending upon the computer environment; select RUN in each instance to continue installation.*


4. The installation will begin; press **Continue** when prompted.



5. Click **Finish** when prompted.



6. Attach the BERNINA E 16 dongle. Connect Ethernet cable to E 16 and PC. Confirm the Emergency Stop on the machine control panel is not engaged.

7. Open the BERNINA U/I.  When the ? appears on screen, turn on the E 16.

8. CSA/RSA dialog flashes on screen, followed by initializing machine dialog. This will take a few minutes to complete. When complete, reload thread tree and activate Closest Match & Bobbin Detection settings.

9. Machine is ready for stitching.