

## Installation manual BERNINA embroidery software 6 SP2

### Installation Requirements

- An operating BERNINA embroidery software 6 installed on your Computer.
- All programs are closed.
- Administrator rights for your computer.

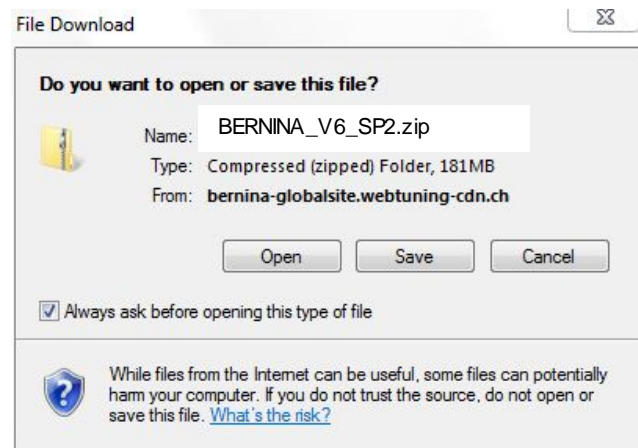
Before you start with the installation of the Service Pack, please be sure that the Dongle is not in a USB-Port.

### Step 1: Download Service Pack

To start the download process, click on the link:  | BERNINA\_V6\_SP2.zip

### Step 2:

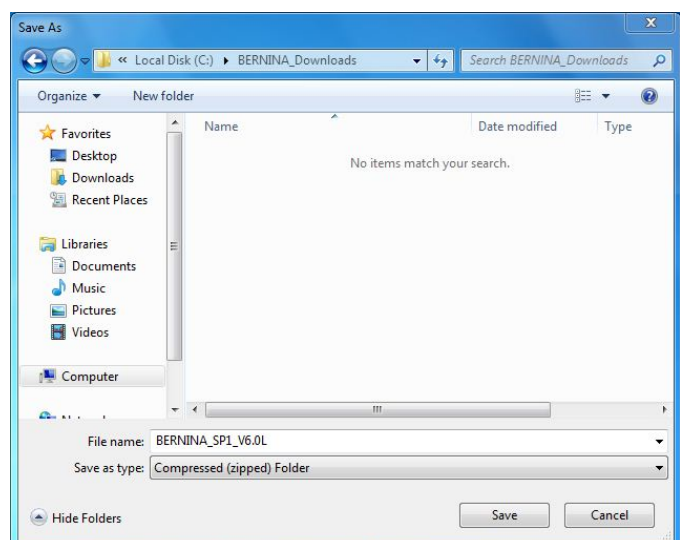
A dialog window will open:  
Click on "Save".

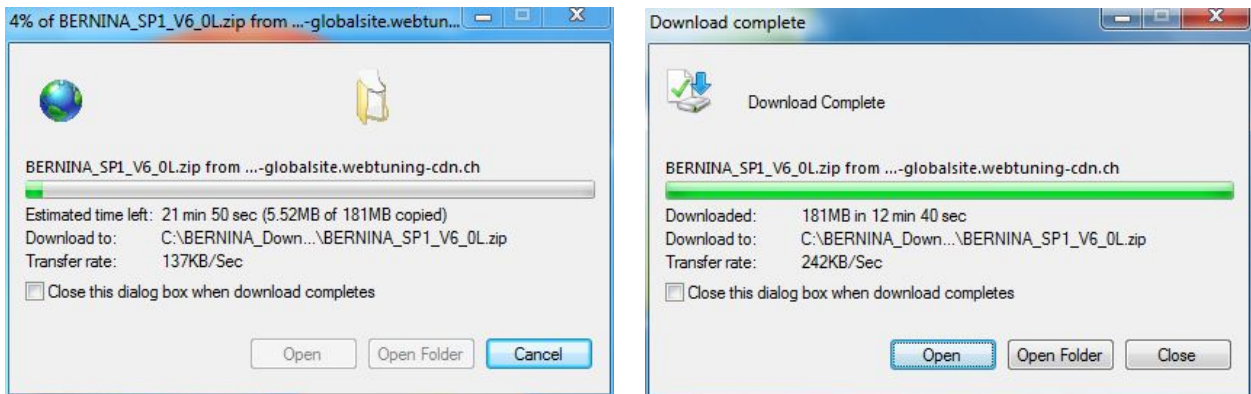


### Step 3:

A "Save as ...." window will open. Select a path on your local PC (**Example: C:/BERNINA\_Downloads**).

Click on "Save" to download the ZIP file onto your computer.4





*(The time for downloading the file is dependent on the band width of your Internet connection.)*  
 Unselect "Close this dialog box when download completes" and click on "Open".

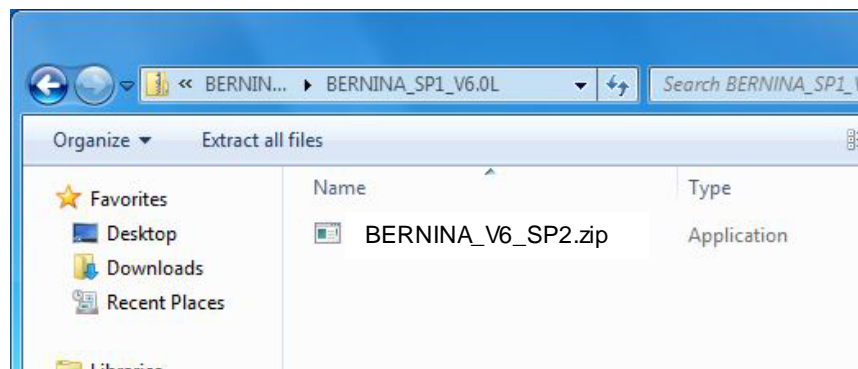
### Step 4:

When the security message is displayed, click on "Allow".



### Step 5: Installation of the Service Pack

To start the installation, click on the file: BERNINA\_V6\_SP2.exe. The installation of the Service Pack2 will start.



### Step 6:

Depending on the setting and version of your Windows® operating system, a security message is displayed. To continue with the installation, click on the "Continue", "Execute" or "Yes" button.

### Step 7:

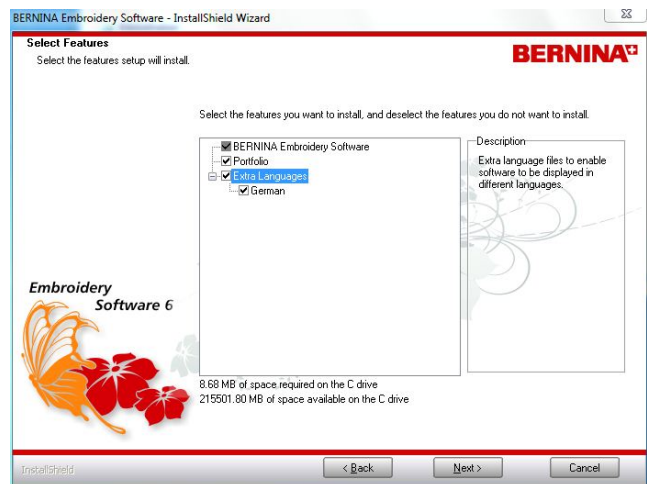
Select "**Next >**" to carry on with the installation. Follow the instructions on your screen.



### Step 8:

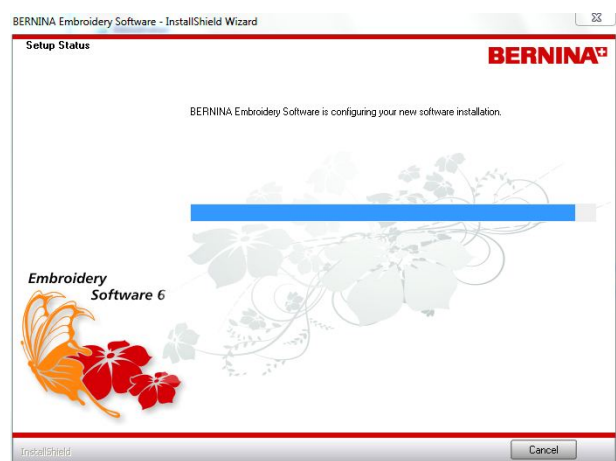
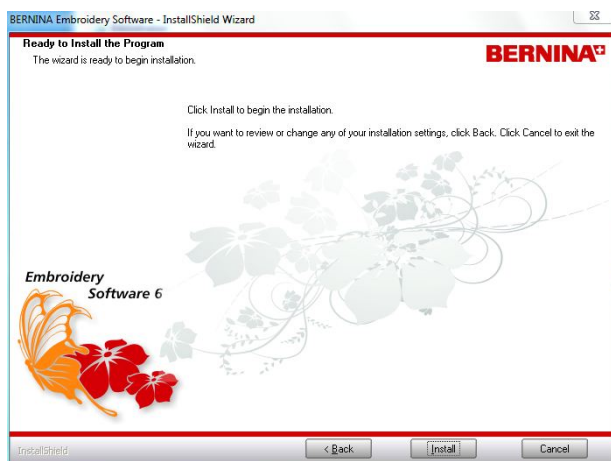
Select „**Extra Languages**“ to install „**German**“ as the application language.

Select "**Next >**" to carry on with the installation. Follow the instructions on your screen.



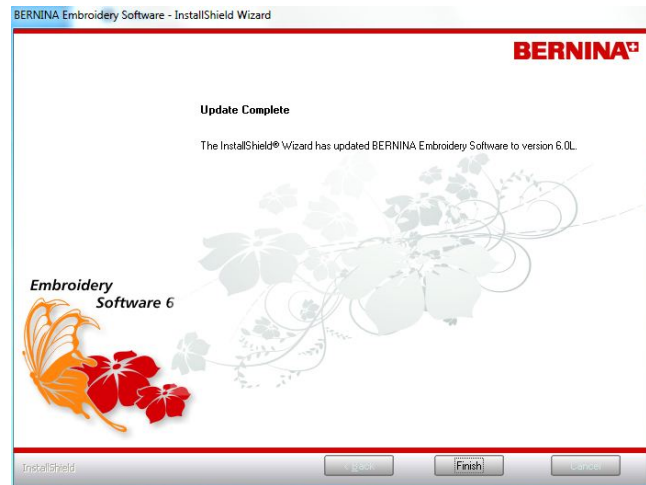
### Step 9:

Select "**Install >**" to carry on with the installation. Follow the instructions on your screen.



## Step 10: Installation finish

Click on "**Finish**" to complete the installation of Service Pack 2.



Plug in your Dongle on an USB-Port and start your BERNINA embroidery software 6.

## Step 11: Checking the version

After you have started the BERNINA embroidery software 6 you can check in „**Help – About ...**“ the installed embroidery software version. (V6.0S)

