

BERNINA
L 460 | L 450 | L 220

14 appointments
in one week

3 nights to interpret
my scribbles

1,500 durable,
flexible and beautiful
stitches per minute

3 nights of takeout
from my neighborhood deli

1 versatile dress
that keeps up with
my busy lifestyle



THE NEW
OVERLOCKER/SERGER

made to create

BERNINA⁺

B

Cut, Sew and Finish in a Single Step!

Working with an overlocker/serger means saving time and stitching fast. Sewing projects take shape quickly and with little effort. Innovative features make BERNINA overlockers/sergers delightfully easy to use, ensuring professional quality down to the last stitch. The overlocker/serger is a perfect companion to the sewing machine as a specialist in overlock, coverstitch or chainstitch.

10 Reasons to Have an Overlocker/Serger:

- 1. Cut, sew and finish in one step*
- 2. Quick, professional and durable finish*
- 3. Perfect for stretchy and woven fabrics*
- 4. Excellent rolled hemming (L 460 and L 450)*
- 5. Professional flat joining coverstitch seams (L 220)*
- 6. Flat and even seams and hems with differential feed*
- 7. Ruffles and gathers automatically with differential feed*
- 8. Vast applications with decorative threads*
- 9. Speedy patchwork piecing for quilting*
- 10. Unlimited creative possibilities with feet and accessories*

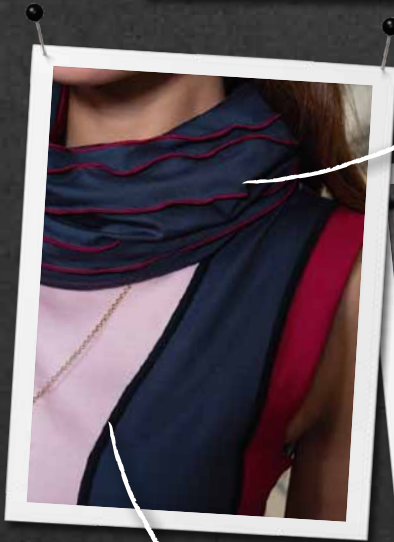




2.5 mm Coverstitch



Chainstitch



2-thread Flatlock



3-thread Rolled Hem



4-thread Overlock



BERNINA Overlocker/Serger L 460 and L 450

Flexibility and Ease-of-Use

Ultimate Comfort

The BERNINA overlocker/serger models, L 460 and L 450, offer adjustable settings that can be used while sewing. You can adjust the cutting width from 3 to 9 mm and the stitch length from 0.8 to 4 mm. Effortlessly change the differential feed to ensure wave-free seams in knits and no puckering in fine fabrics. The L 460 even has an automatic needle stop up/down feature, that can be changed with a back-kick of the BERNINA Foot Control. The two LED lights give bright light not only by the needle, but also in the looper threading area.

Fast and Flexible

Both models run smoothly at high speeds: The L 460 reaches up to 1,500 stitches per minute (spm) and the L 450 up to 1,300 spm. The L 460 and L 450 cut and finish different thicknesses and types of fabric, and get the job done quickly. The strong and quiet DC motor of the L 460 allows you to sew stitch by stitch for even more precision and control. The presser foot pressure is variable in 5 steps to feed all types of fabric evenly.

Micro Thread Control (MTC)

The patented MTC makes over-the-edge thread loops disappear with a quick flip of a lever. This saves time and effort while ensuring consistent high-quality stitches, professional-looking seams and finished edges.

Accessories Included

The most commonly used accessories, such as needles or a pair of tweezers, are located in the looper cover, neatly arranged and ready to be used. The L 460, the high-end model, has additional accessories including: the extension table, which gives you even more working space, and the BERNINA Free Hand System (FHS), which allows you to raise or lower your presser foot with the knee lifter so you can keep both hands on your sewing project.



BERNINA Free Hand System (FHS)



Easy Threading

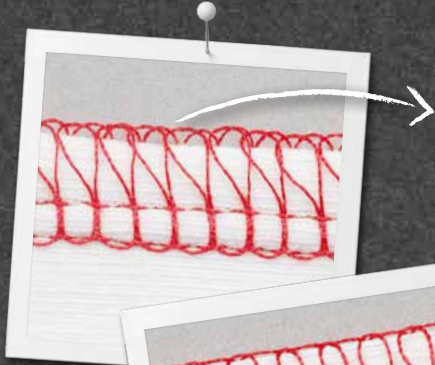
The built-in needle threader of the L 460 and the manual threader of the L 450 allow for easy and ergonomic threading. It is a cinch to thread the lower looper thanks to the lower looper easy threader of both models. Additionally, the L 460 has a patent pending automatic threading system of the lower looper eye. The color-coded threading path and the handwheel positioning window helps you thread quickly and easily. For your convenience, there is one thread cutter on the left cover and one located by the looper eye (L 460 only).

Tension at Its Best

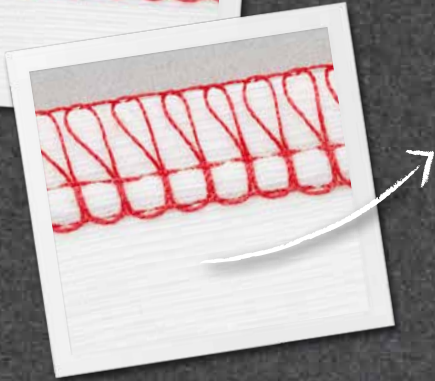
In both models, the tension releases when the presser foot is up. The L 460 automatically sets the appropriate thread tension once you have chosen a stitch through the exclusive One Dial Tension (ODT) feature which is preset for all 16 stitch formations.



Micro Thread Control (MTC)



Before adjustment with MTC, the seam is too loose and the loops lack an attractive finish.



After adjustment with MTC, the loops of the stitch lay perfectly on the edge of the fabric and the edge is overlocked neatly and professionally.



m (FHS)

BERNINA Cover and Chain L 220

The Ideal Addition

Professional Cover- and Chainstitches

For cover- and chainstitch, the L 220 is the ideal partner to give a professional finish to selfsewn textiles and garments.

Expand the Creative Scope

Be equipped for all projects with the extensive range of functions and professional stitches of the L 220.

Simple Hem with Coverstitch

Measuring 5 mm or 2.5 mm, this coverstitch has the precise width most often used in ready-to-wear clothing, so garments will look professional.

Flat Joining Seam with Coverstitch

With some clothes, nothing should rub against your skin. The coverstitch provides perfectly flat joining seams for superior wearing comfort. The 3-thread narrow coverstitch is the perfect flat hem for all stretch fabrics; it also can be used as a decorative topstitch seam for T-shirts, sportswear, knit and jersey garments, lingerie or sweatshirts.

Gathering with Chainstitch

Feel great in clothes that move and stretch: elastic thread used in the chain looper will produce stretchable seams ideal for sports- and children's wear.

Chainstitch Seams and Hems

Create fine seams and hem finishes for trousers, and jacket pockets as well as decorative textiles like pillows and furniture covers.



Retractable Thread Stand

Presser Foot Pressure Regulator

Thread Tension Adjustment

Stitch Length Dial

Compensation Foot for Cover- and Chainstitches

Differential Feed Dial

Features and Functions of the BERNINA Overlockers/Sergers L 460 and L 450

Stitch Variations	L 460	L 450
Total number of stitches	16	16
4-thread overlock	1	1
3-thread overlock (wide/narrow)	2	2
3-thread super-stretch	1	1
3-thread flatlock (wide/narrow)	2	2
3-thread narrow seam	1	1
3-thread rolled hem	2	2
3-thread picot stitch	1	1
2-thread overlock (wide/narrow)	2	2
2-thread flatlock (wide/narrow)	2	2
2-thread rolled hem	1	1
2-thread wrapped overlock (wide/narrow)	2	2

Comfort Features	L 460	L 450
Needle threader	x	
Lower looper easy threader	x	x
Lower looper eye threader	x	
Color-coded threading path	x	x
Lay-in threading system	x	x
Handwheel position indicator	x	x
One Dial Tension (ODT) with preset thread tensions	x	
Automatic needle stop up	x	
Needle up/down with BERNINA foot control	x	
Stitch-by-stitch sewing	x	
Stitch length fine tuning	x	x
Thread tension release when presser foot raised	x	x
Adjustable stitch length while sewing	x	x
Adjustable differential feed while sewing	x	x
Accessories in looper cover	x	x
2 LED sewing lights	x	x
Safety switch activated when cover open or presser foot raised	x	

Technical Specifications	L 460	L 450
Micro Thread Control (MTC)	x	x
3-9 mm overlock seam width	x	x
Upper knife drive from below	x	x
2-step front presser foot lift	x	x
5-step presser foot pressure	x	x
Rolled hem lever built into stitch plate	x	x
Motor	DC	AC
Sewing speed, stitches per minute	1,500	1,300

Standard and Optional Accessories	L 460	L 450
Standard overlock presser foot	x	x
Upper looper converter	x	x
BERNINA Free Hand System (FHS)	x	
Extension table	x	opt.
Waste collector for excess fabric	x	opt.
Seam guide	x	x

Standard and Optional Accessories	L 460	L 450
Set of needles	x	x
Tools and accessories in a separate box	x	x
Dust cover	x	x
Blindstitch foot 0.5 mm	opt.	opt.
Blindstitch foot 1 mm	opt.	opt.
Elasticator foot	opt.	opt.
Gathering foot	opt.	opt.
Piping/beading foot	opt.	opt.

Features and Functions of the BERNINA Cover and Chain L 220

Stitch Variations	L 220
Total number of stitches	4
4-thread coverstitch, 5 mm	1
3-thread coverstitch, 5 mm	1
3-thread coverstitch, 2.5 mm L/C	1
2-thread chainstitch	1

Comfort Features	L 220
Automatic looper threader	x
Color coded threading paths	x
Thread tension release when presser foot raised	x
Adjustable stitch length while sewing	x
Adjustable differential feed while sewing	x
Sewing light	x

Technical Specifications	L 220
Seam width: 2.5 mm and 5 mm	x
2-step presser foot lift with front foot lift	x
Adjustable presser foot pressure, H/M/L	x
Motor	AC
Sewing speed, stitches per minute	1,300

Standard and Optional Accessories	L 220
Coverstitch and chainstitch compensating Foot	x
Set of needles	x
Chainstitch foot	opt.
Tools and accessories in a separate bag	x
Dust cover	x

BERNINA[®]