



# Cup Koozies



These simple-to-stitch koozies make great gifts for everyone! Made in the hoop, this project is easy to personalize with different appliqué fabrics. A blank koozie is included, perfect for adding a monogram, school name or Greek letters.

### Supplies:

- Heavy weight wash away stabilizer
- ¼ yd. OR 9" x 10" fabric
- 9" x 4" piece Insul-Bright
- 4" piece ½" elastic
- 1 button
- Embroidery threads
- Temporary spray adhesive

### Cut

- (1) Insul-Bright using pattern
- (2) 4.72 x 10.23 inch pieces fabric (back and top fabrics)

Photo 1

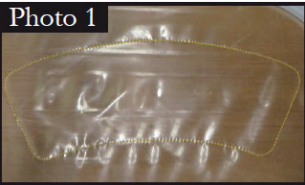


Photo 2

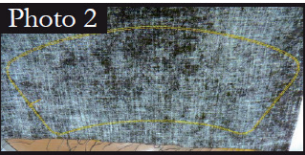


Photo 3



Photo 4



### Instructions

- Hoop two layers heavy weight wash away stabilizer.
- Stitch first stitch of embroidery design which is the Back Layer Placement Stitch. Photo 1
- Center and place back fabric wrong side up. Stitch the second stitch of embroidery design called Back Layer Cut Line, Tackdown & Loop Placement Stitch. Photo 2
- Trim fabric along cut line. Photo 3
- Fold elastic piece in half, and place over Loop Placement Stitch, with folded side out and cut ends inside. Tape in place. Photo 4
- Stitch the Loop Tackdown, making sure the elastic doesn't move.
- Remove tape.



Photo 5

- Using temporary spray adhesive, spray both sides of the Insul-Bright. Center and place Insul-Bright over back. Photo 5



Photo 6

- Top Layer Basting Stitch. Photo 6



Photo 7

- Stitch the Top Layer Cut Line & Tackdown. Photo 7



Photo 8

- Trim fabric along cut line, being careful not to cut the elastic. Photo 8  
NOTE: You may want to change the bobbin thread now to match the last color.

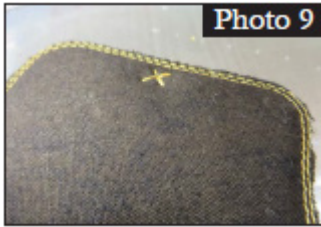


Photo 9

- The next color change is the Button Placement Stitch. Photo 9



Photo 10

- The last color is the Match Bobbin and Cover Stitch. If you haven't already changed out your bobbin thread now is the time. Photo 10



Photo 11

- Stitch on the button over the Button Placement Stitch. Photo 11
  - Place the cup koozie around your cup and button in place. Enjoy the different ones!
- NOTE: If you need the koozie to fit a slightly smaller cup, use shorter elastic and/or stitch the button further in than the Button Placement Stitch. If you need to fit a slightly larger cup, use a longer elastic. You can use the Insul-Bright Pattern to get an idea how the koozie fits around the cup you want to use it with.