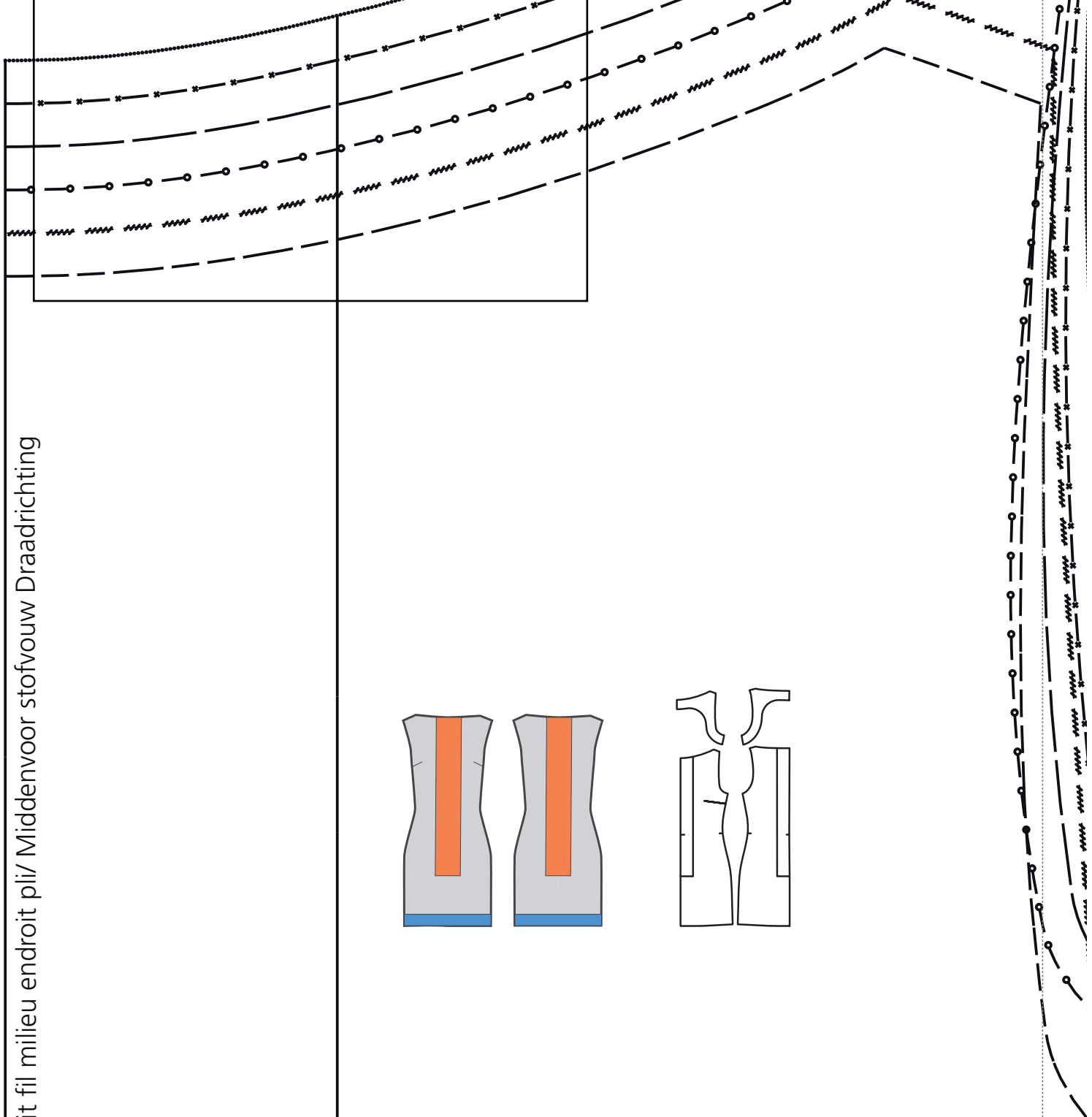
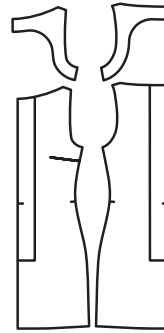
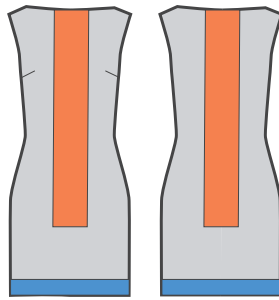


1

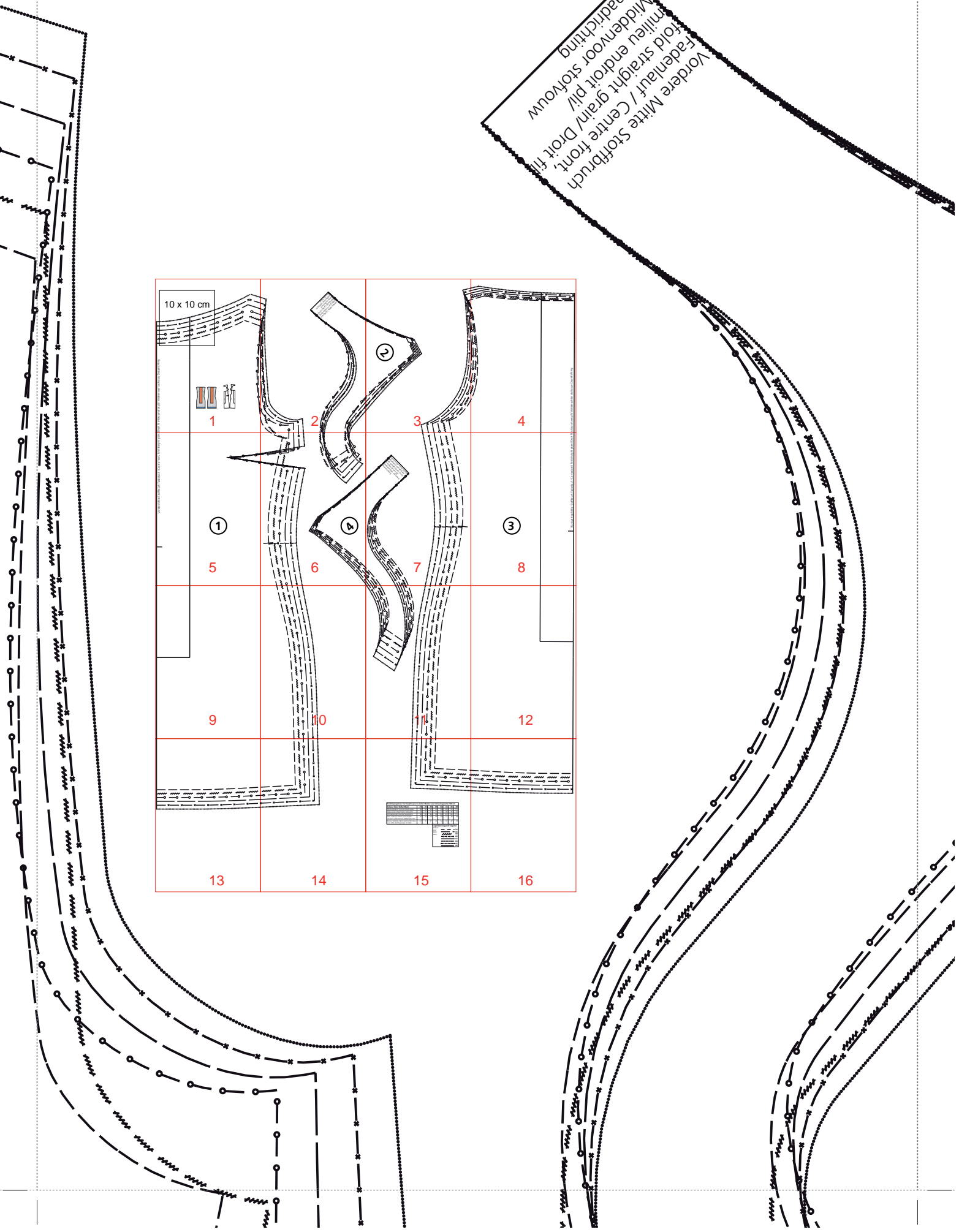
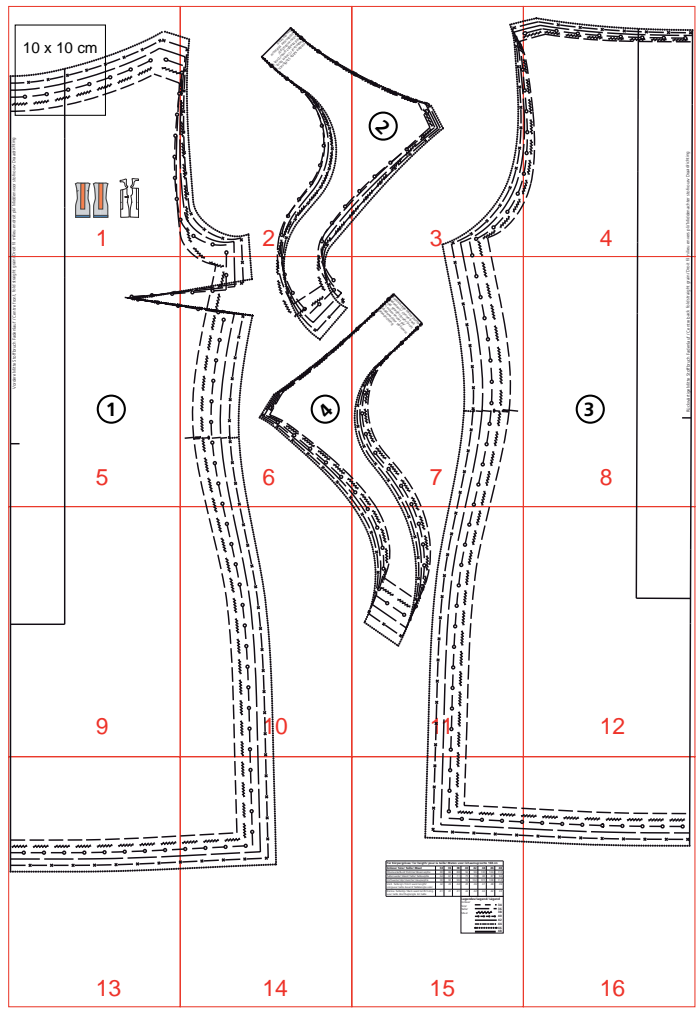
# 10 x 10 cm

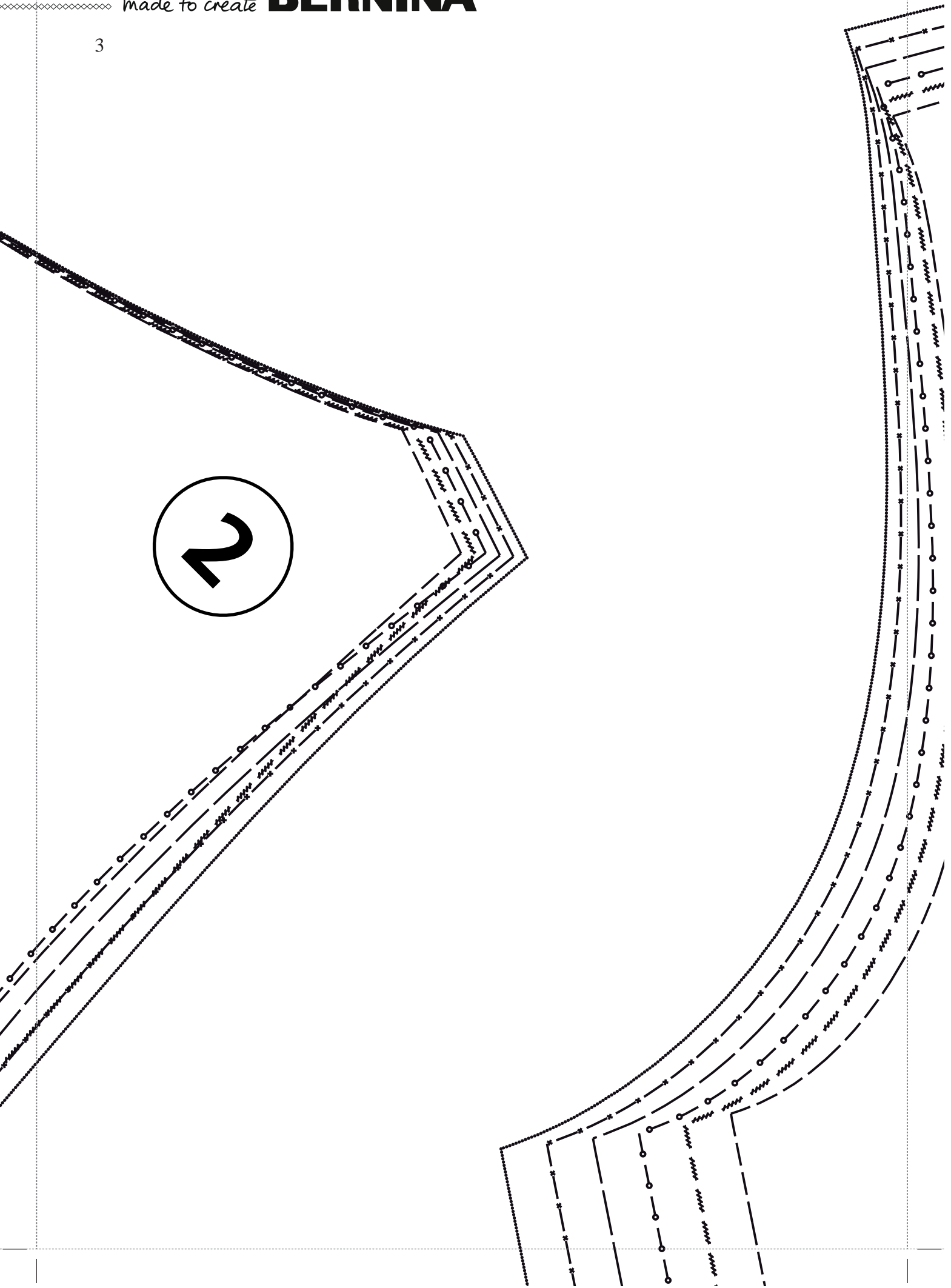
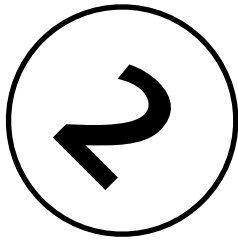


at grain/ Droit fil milieu endroit pli/ Middenvoor stofvouw Draadrichting



Vordere Mitte Stoffbruch  
Fadenlauf / Centre front  
Fold straight grain/ Droit fil  
Middelvoor stofvouw  
Middelvoor stofvouw  
Diadrichting





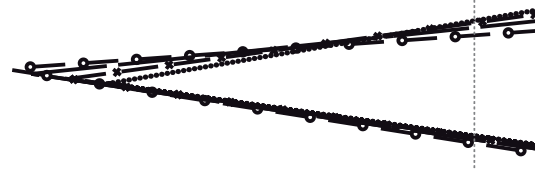


Droit fil milieu envers pli/ Middenachter stofvouw Draadrichting

Vordere Mitte Stoffbruch Fadenlauf / Centre front, fold straight grain/

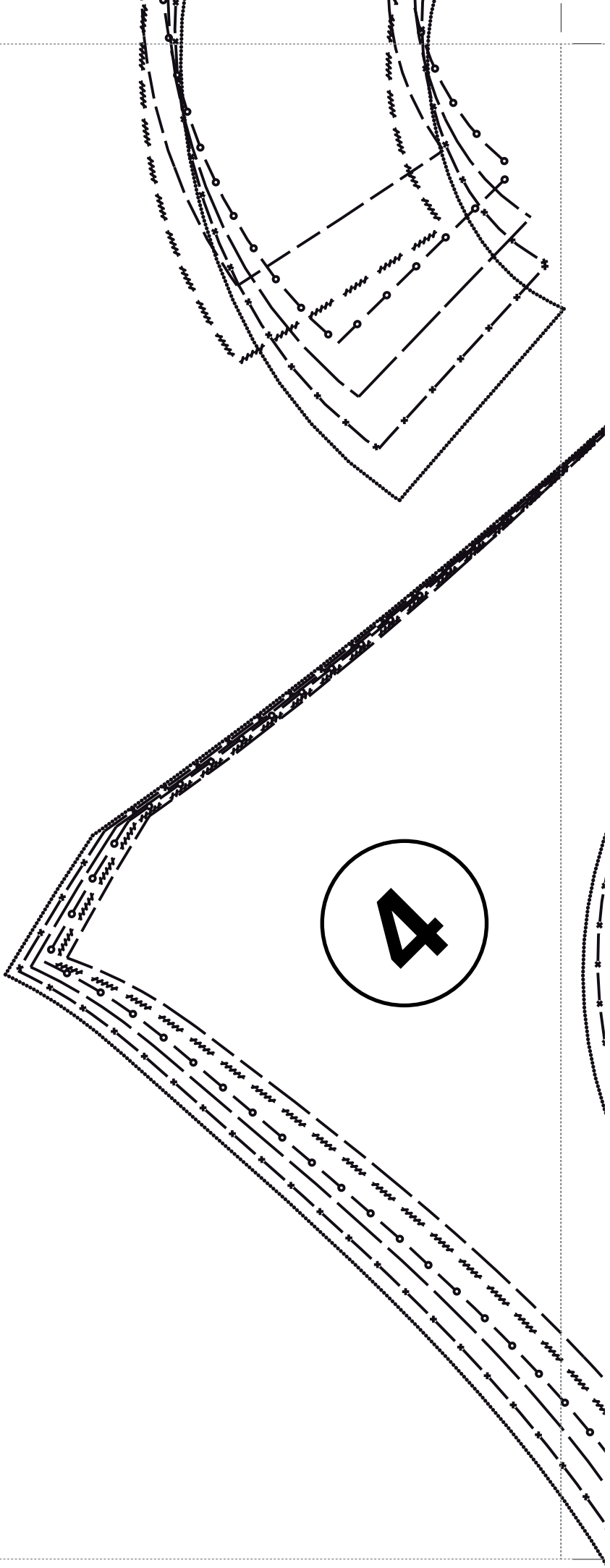
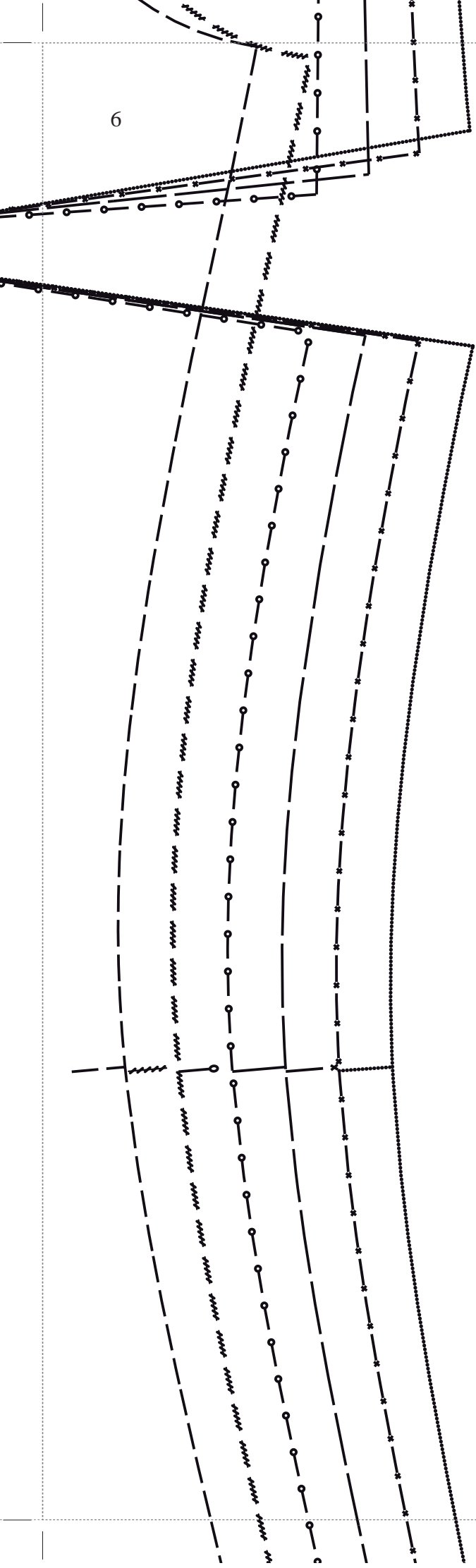
5

1



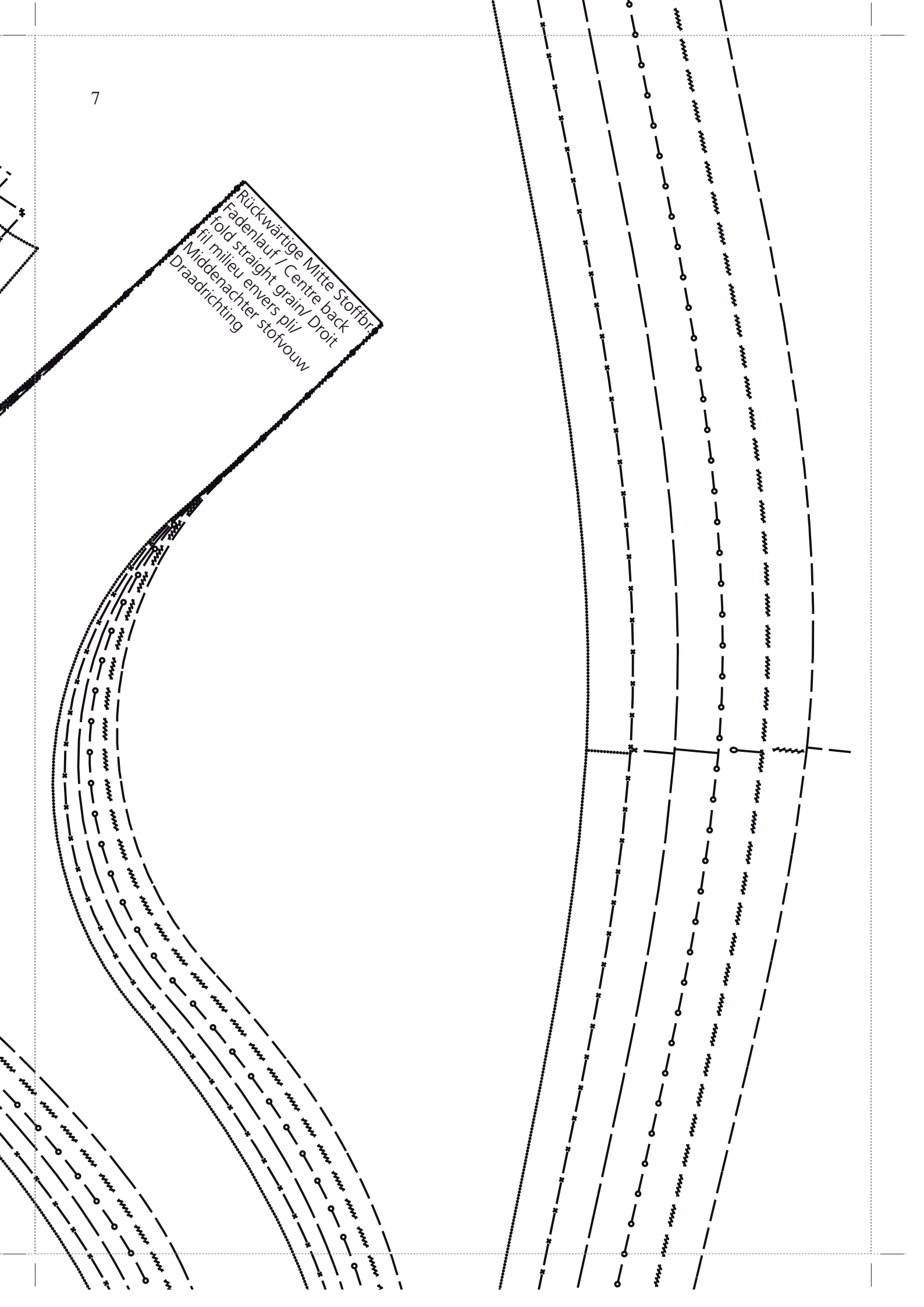
1

6



4

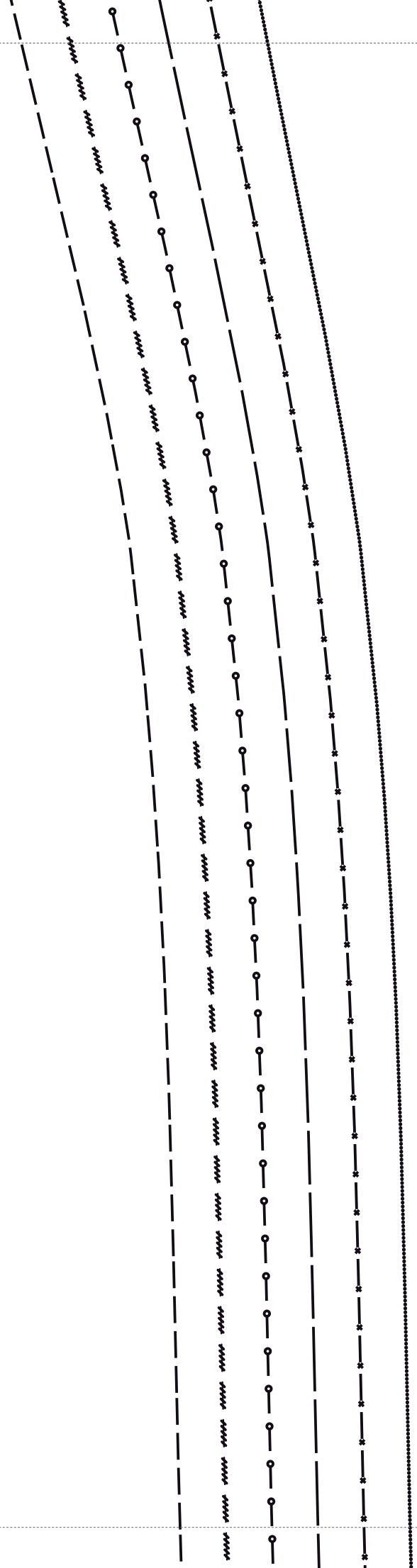
Rückwärtige Mitte Stoffbr.  
Fadenlauf / Centre back  
fil milieu envers pli / Droit  
Middenachter stofvouw  
Draadrichting



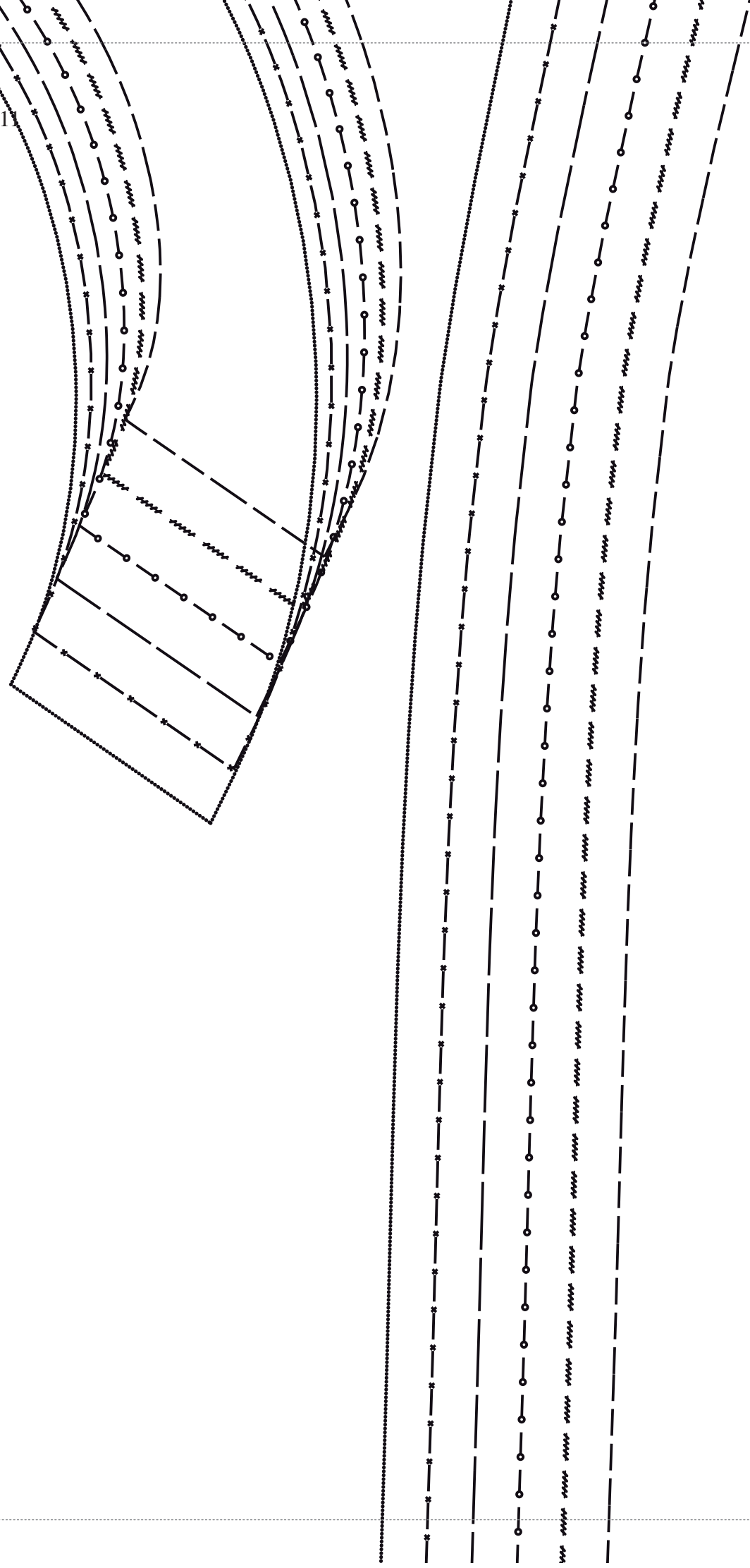
**3**

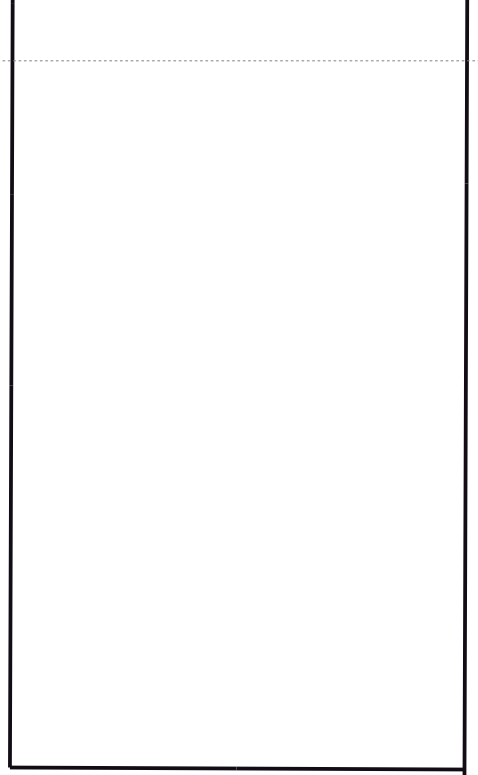


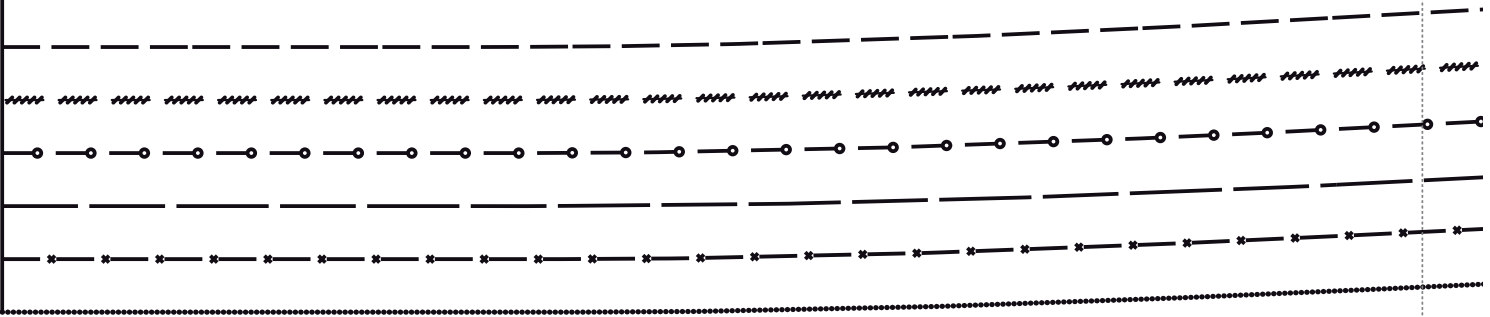


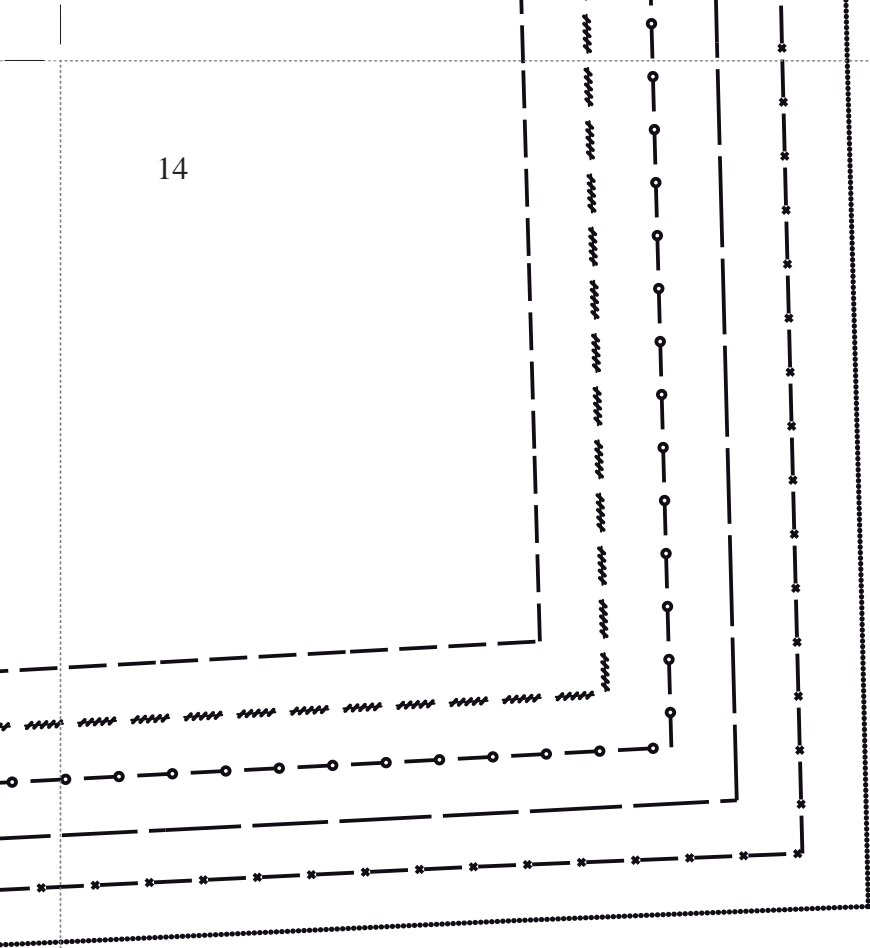


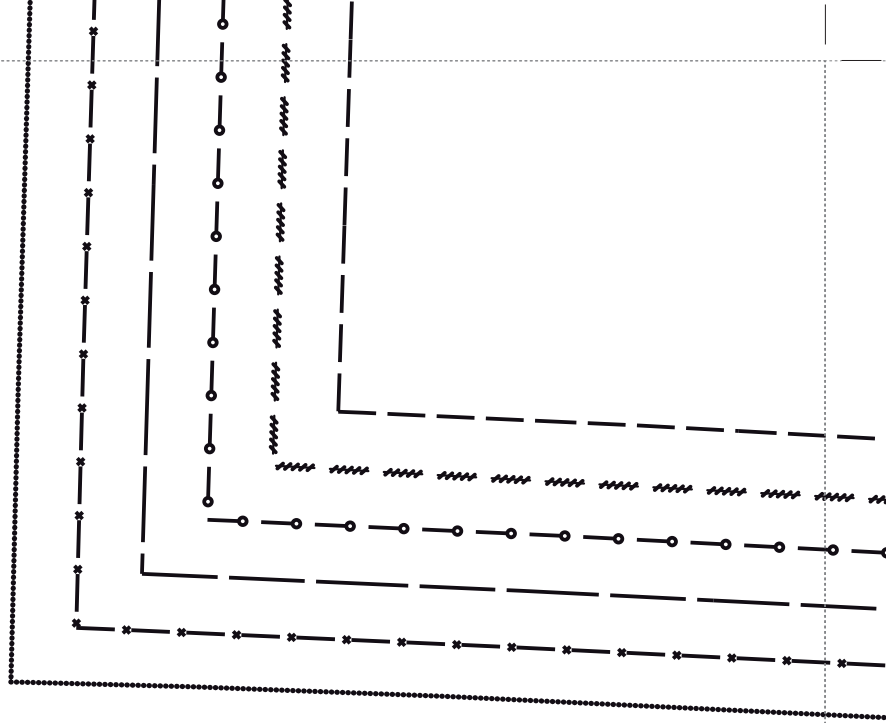
1











Für Körpergröße/ for height/ pour la taille/ Maten voor lichaamsgrootte 168 cm								
Größe/ Size/ Taille/ Maat	34	36	38	40	42	44	46	48
Oberweite/Bust/ Poitrine/ Bovenwijdte	80	84	88	92	96	100	104	110
Taillenweite/ Waist/ Taille/ Taillewijdte	64	67	71	75	79	83	87	94
Hüftweite/ Hip/ Hanche/ Heupwijdte	90	93	96	99	102	105	108	114
Vord. Taillengl./ Front waist length/ Longueur taille devant/ Taillelengte voor	42	43	44	45	46	47	48	49
Rückw. Taillengl./ Back waist length/ Longueur taille dos/ Ruglengte tot taille	41	41	41	42	42	42	42	43

Legendev/Legend/ Légend	
Größe/ Size/ Taille/ Maat	--- --- --- --- 34
	————— 36
	~~~~~ 38
	—○—○—○—○ 40
	————— 42
	—*—*—*—* 44
	..... 46
	————— 48

