

inspiration

SEWING, EMBROIDERING
AND OVERLOCKING

No. 66 Autumn/Winter 2016
www.bernina.com

SWITZERLAND CHF 6.90
EUROPE € 4.60
UNITED STATES \$ 6.95
INCL. VAT
ISSN 1664-5987

Wintertime

Snuggly

Accessories

For her – for him

A touch of class

PATTERNS AND
INSTRUCTIONS FOR
FASHION AND HOME
ACCESSORIES



made to create **BERNINA**



Fashion

- 6 Snuggly**
Dress with pattern repeat and cuddly faux fur waistcoat
- 8 Retro chic**
Sixties-style check blouse and culottes
- 10 Casual yet chic**
Eye-catching tunic with generously cut cardigan
- 12 Classics with attention to detail**
Much-loved wool coat, slim-fit pleated trousers, sophisticated belt and bag in a mix of materials
- 14 Festive**
Dress and clutch for the “star” of the evening

Tips for Sewing, Embroidering and Overlocking

- 17** Sewing thin fabrics with ease
- 18** Parallel sewing aids: versatile seam guides
- 19** Classic shirt sleeve vent

News and Notes

- 16 BERNINA News**
BERNINA 700 Embroidery Machine and preview of the new embroidery software
- BERNINA Notes**
- 21** What’s new at the Creative Center



Children

- 22 Happy holidays**
Faux fur waistcoat, skirt and hot-water bottle
in a jolly gingerbread man design

Living and Lifestyle

- 24 Cosy creations from wool**
Cushions, lamp, basket
- 26 Scandinavian winter**
Star magic, sewn or stamped
- 28 Creative accessories**
Gifts like jewellery and caps for you or
your best friend
- 30 Presents for him**
Little gifts from cork, or perhaps a classic shirt
instead – the choice is yours

Guest Spot

- 32 Marloes Dadswell, Corset Designer**

Young Look

- 34 Seasons Greetings!**
Christmas jumpers with jolly decorations

Readers' Service

- 35 Our gift for you**
Masthead

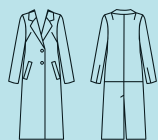
FASHION



Classics

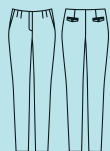
with a focus on detail

Casual yet classy, these winter garments and accessories inspire an easy-going feeling that will help get you through the cold days ahead. Long, fitted coats and wider trousers are the main themes here.



6610 Coat

As long as it's long! A must-have of the season, this woollen coat exudes cosiness in classic colours such as grey, off-white and camel. The cross seam on the back lends a particularly casual touch.



6611 Trousers

With their pressed-in pleat at the waistband, these trousers are classic yet casual. The soft faux leather welted pockets on the back are a real highlight. A flat cord is couched on with the Bulky overlock foot to reinforce and highlight the front slit pockets.



Trousers with Bulky overlock foot no. 12
Leather and faux leather elements
with Zigzag foot with non-stick sole no. 52
www.bernina.com/foot-52



6612 Waistband-style belt

Made from super-soft faux leather, the belt turns these trousers into something special. Thanks to the press studs it's removeable, so the trousers can be worn with or without a belt.



6613 Bag

Bags with squares, diamonds or stripes in contrasting colours are all the rage at the moment. The main body of the bag is made of the same soft faux leather as the belt. We recommend the Zigzag foot with non-stick sole no. 52 for easy sewing and even feeding of the genuine leather elements.



Festive

Christmastime often comes with its fair share of occasions, events and invitations. Let us make you into the “star” of the evening!



6622 Dress

Embellished with crystals and rivets, the tulle star on the shoulder just hints at what lies below. This gorgeous outfit will place you centre stage at any party. The stretch dress jersey is the ideal fabric for cutting a few wild shapes on the dance floor!



6623 Clutch

Of course, every festive dress needs a matching clutch – check out our fun and cheeky take on this fashion essential. A handle on the back of the clutch makes it easier to carry. The chain handle also lets you sling it over your shoulder like a handbag, if needed.



Dress
with DesignWorks/CutWork Tool





Cosy up to wool!

Wool creates warmth, with no need to haul out your knitting needles. We've used woollen fabrics with some of these projects, and merely punched in woollen threads with others.

6635 Cushion covers

The Needle-Punch Tool does a beautiful job of embellishing the cushion covers. The yarns are punched in directly from the balls of wool, and here it's advantageous if they cross or twist all by themselves. The variety of patterns produced in this way is practically limitless.

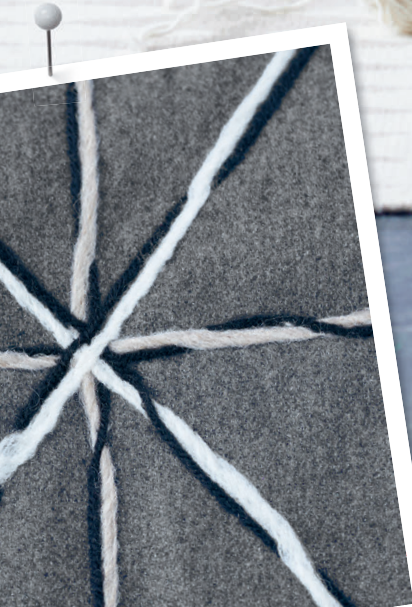
The pink cushion creates an exciting contrast to the others, not only in terms of colour but also in the shape of the motif, which is picked up by the pattern on the lamp.

6636 Basket

A basket for your knitting things – or whatever else is stored in the lounge – keeps everything neat and tidy, and looks very decorative even with nothing in it. Thanks to its sturdy interfacing, the basket can stand on its own.

6637 Lamp

The lively motif on this designer lamp is produced almost effortlessly by the CutWork Tool used in conjunction with your embroidery machine. The special SnapPap paper can be washed without a hitch. The pieces cut out with the CutWork tool are then sewn onto normal curtain material – and voilà, your lamp is finished.



With Punching Tool; small cushion cover with
BERNINA Embroidery Software and Jumbo Hoop
www.bernina.com/punch-work-tool

