

**BERNINA<sup>+</sup>**



*BERNINA overlockers –  
**simply perfect sewing***

# The BERNINA overlocker range – all products at a glance

**1300MDC**  
**BERNINA**



**1150MDA**  
**BERNINA**



*mtc*  
micro thread control

M Models

Overlock / Coverstitch Machines

**800DL**  
**BERNINA**



**700D**  
**BERNINA**



Overlockers

**009DCC**  
**BERNINA**



Coverstitch Machines

**bernette 610D**  
**BERNINA**



Overlockers

# Contents

## Page

- 02** The BERNINA overlocker range  
All products at a glance
- 04** Introduction  
BERNINA overlockers – sew, cut and  
neaten in a single operation!
- 06** *mtc* (Micro Thread Control)  
Just twist the knob for the perfect seam
- 08** 1300MDC  
The high-end machine
- 12** 1150MDA  
The ultimate in ease of use
- 16** 800DL  
700D  
Compact and reliable
- 20** 009DCC  
The ideal coverstitching addition
- 22** bernette 610D  
The entry-level overlocker
- 24** List of keywords
- 24** Stitch variations  
BERNINA overlockers – impressively versatile

! Accessories are shown in the separate  
BERNINA accessories catalogue



# *BERNINA overlockers – Sew, cut and neaten in a single operation!*

With a BERNINA overlocker, your sewing projects take shape unbelievably quickly and effortlessly. BERNINA overlockers sew, cut and neaten in a single operation – in overlock, chain or coverstitch. Innovative features make BERNINA overlockers delightfully easy to use, and ensure professional quality down to the last stitch.

## *Exclusive BERNINA overlocker features\**

### **Perfect rolled hem**

Perfect rolled hems made easy: Simply slide the lever to switch the machine from overlock stitching to rolled hemming and back, with no need to change the stitch plate or presser foot.

### **Swing-out presser foot**

This patented feature provides better access to the needles, for easier threading and needle replacement.

### **Multi-purpose foot**

With built-in pressure-release lever. This foot is suitable for all stitch types. Also features a built-in tape guide for holding narrow ribbons or elastic in place while overlocking.

### **Smooth, quiet operation**

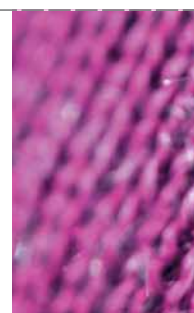
Top-quality construction and optimally matched components ensure the incredibly smooth, quiet running of BERNINA overlockers, letting you work comfortably and for longer periods.

### **Reliability and long working life**

As with all BERNINA products, you can count on the highest quality. With BERNINA overlockers you've got a reliable, long-term partner for professional and creative sewing.

### **Handwheel position indicator**

A real advantage for easy sewing: The viewing panel and red position indicators make it simple to find the ideal position for the needles and lower looper for threading. What's more, the purple mark shows you the best position for switching from overlock to coverstitch mode.



## Further advantages\*

<b>24 stitch variations</b>	The BERNINA overlocker range offers 24 different stitch variations, including a chainstitch, four coverstitches, and four combination overlock and chain stitches.
<b>Stitch widths of up to 9 mm</b>	Even lets you sew together loose knits, such as hand-knitted jumpers.
<b>Front foot lift</b>	The tip of this presser foot can be lifted, making it much easier to position multiple layers of fabric and bulky projects beneath it.
<b>Direct threading (lay-in system)</b>	The lay-in system and the colour-coded threading paths let you thread the upper and lower loopers quickly and reliably.
<b>Auto-threader for two needles</b>	For easy threading of both overlocker needles.
<b>Personal reference setting</b>	Save your own personal settings for sewing with your preferred material for each stitch variation.
<b>LCD screen</b>	Lets you keep track of your personal reference settings and basic settings for the different stitch variations.
<b>Simultaneous thread-tension release</b>	Works on all four tensions when you raise the presser foot. This feature makes it easier to remove your project from underneath the presser foot. Threads can be pulled without causing a problem.
<b>Use of standard sewing-machine needles</b>	Standard needles can be used for all usual sewing projects.
<b>High-performance upper knife drive</b>	This drive ensures an extremely powerful cutting force. Even thick fabrics won't deflect the upper knife, so all fabric edges can be trimmed safely and professionally. A technology used in industry.
<b>Swing-out upper-knife arm</b>	At the press of a button, the upper-knife arm can be released quickly and easily to provide more room. This is particularly useful when, for example, you're working in coverstitch mode, or do not wish to trim the fabric edge.

\*Some features are only available on specific models

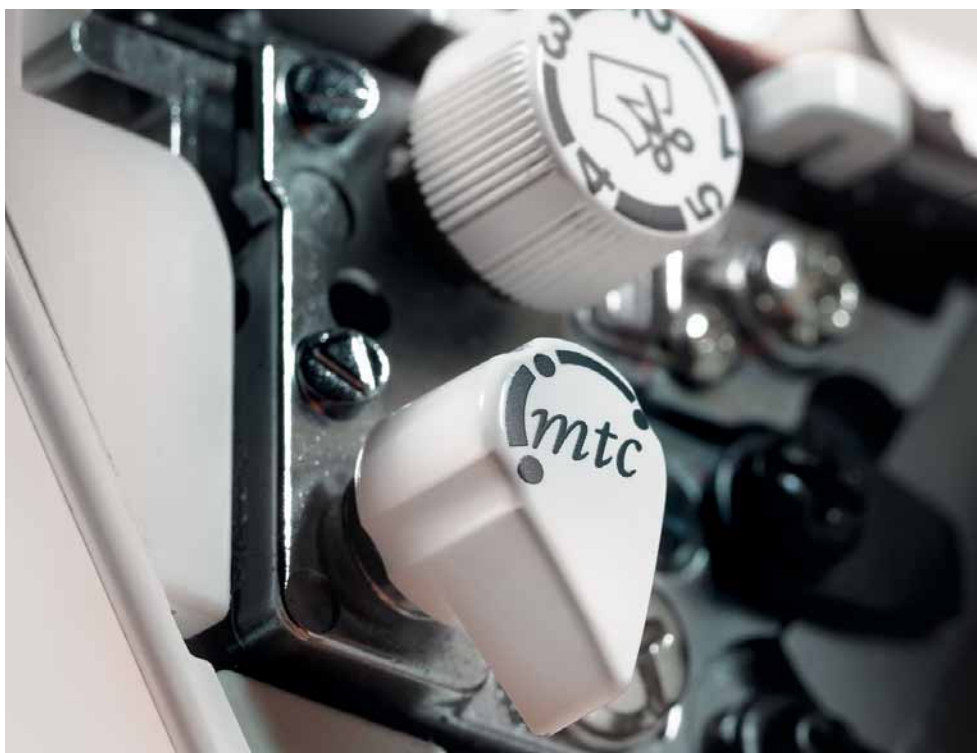


## A twist of the knob for the perfect overlock seam

The patented *mtc* micro thread control saves you significant time and effort while ensuring consistent high-quality stitches, since you need only set thread tension once – even if you alter the cutting width and fabric thickness! The seam is fine-tuned almost effortlessly via the special *mtc* knob.

*mtc*  
micro thread control

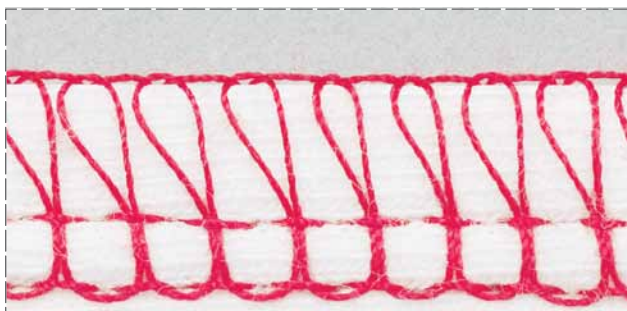
*mtc*  
micro thread control



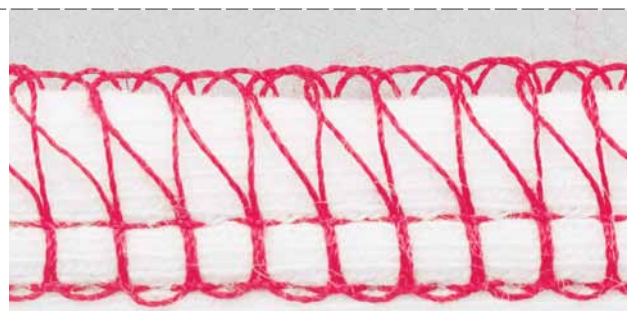
*Mtc* thread control lets you adjust the amount of loop with a simple twist of the *mtc* knob in a single operation – enabling you to avoid protruding thread loops and create professional looking seams and edge finishes.

In order for models without *mtc* technology to produce attractive seams, the cutting width and one of the two loop tensions must be altered; with easy-to-use *mtc* thread control, such multiple adjustments are unnecessary. *Mtc* technology includes the knife and stitch tongue when you adjust the *mtc* knob.

**After adjustment with *mtc*,** the seam matches perfectly and finishes neatly with the fabric edge.



**Before adjustment with *mtc*,** the seam is too loose and the loops lack an attractive finish.







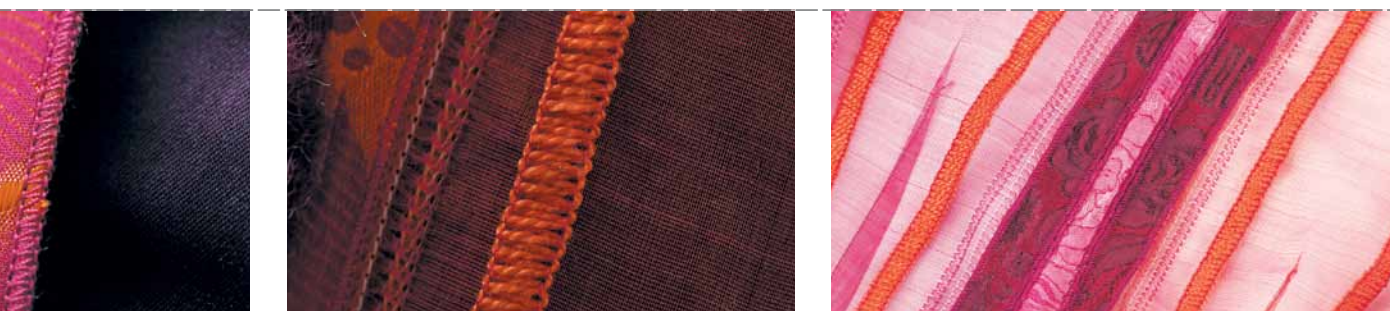
**1300MDC**  
**BERNINA®**



1300MDC

## *The high-end machine*

Professional-looking, versatile and creative sewing is now within your grasp, thanks to the BERNINA 1300MDC. This machine combines cutting-edge technology with a wide selection of stitches, a wide seam-width range of 3 to 9 mm, and various deluxe functions, chief among which is the patented BERNINA *mtc* technology.



## Specials

### — *mtc* Thread Control:

For unparalleled ease in setting the **over-edge thread length** – at the twist of a knob.

### — 24 stitch variants:

On offer are a **chainstitch**, **four coverstitches** and **four combination stitches** (chainstitch/overlock stitch).

### — 5-thread safety-seam stitch:

The hard-wearing **safety seam (combination stitch)** is ideal for reliably joining firm woven fabrics, such as jeans.

### — Coverstitch:

The 3- and 4-thread coverstitch gives you an especially durable, flat stitch in **highly elastic fabrics**.

### — Lay-in threading system:

The BERNINA **lay-in system** allows quick, direct threading every time – and thanks to the automatic lower-looper threading system, threading the lower looper is also a breeze.

### — Handwheel position indicator:

Easy, ergonomic operation: With the aid of the vision panel and the red position indicators, you'll find the ideal needle and lower-looper threading position in no time flat.



As an experienced overlocker, you're sure to have come across this problem: you're sewing thin fabric, and want to adjust the seam width. Until now, you would have had to reset the thread tension separately, in addition to adjusting the cutting width. Now, though, you can spare yourself this tedious task. The new BERNINA 'M' models feature innovative *mtc* technology, with the upshot that in future you'll need only set thread tension ONCE – even if you alter the cutting width and fabric thickness! The seam is

fine-tuned almost effortlessly via the special *mtc* knob. The result is flawless seams that can also be worn decoratively on the outside of the garment. To stimulate your creativity, there are also four coverstitch variants to choose from which are ideally suited to hemming tricot fabrics, sewing in elastic and stretch lace, and trimming edges and decorative hems. They are also perfect for embellishments, especially when used with decorative threads.

### The advantages of *mtc* (Micro Thread Control) at a glance

- Flexible cutting widths of 3 – 9 mm for wide, decorative flatlocked seams in almost all fabrics
- Over-edge thread length need only be set once – the stitch tongue moves with the knife
- Easy, flexible fine-tuning of seam via special knob
- Fabulous rolled hems



# 1300MDC BERNINA®

## Inspiring versatility



### Rolled-hem lever

Simply flick the rolled-hem lever to switch effortlessly to a rolled-hem stitch and back again, with no need to change the stitch plate or presser foot.



### Needle-threader

The practical manual threading tool for quick threading.



### LCD screen

The clear display tells you both the personal and default basic settings of the stitch variants. You can also read the recommended basic thread tension here, as well as save personal settings.



### Patented swing-out presser foot

Simply swing the foot out to the side to give yourself plenty of space for easy threading and hassle-free needle change.



### Front foot lift system

The front foot lift raises the front of the presser foot that bit higher, enabling accurate positioning of multiple layers of fabric and bulky projects such as hand-knitted jumpers beneath it.



### Threading system

The automatic lower-looper threading system lets you thread quickly and directly at all times. Thanks to the BERNINA lay-in system it is a breeze to insert the upper thread.



mtc  
micro thread control



### Micro Thread Control

Thanks to the patented *mtc* thread control, the over-edge thread length can at last be set directly, giving you the perfect seam at the twist of a knob!

### Safety switch

The safety switch is activated as soon as you open the looper cover or the fabric support plate, thus preventing the accidental operation of the overlocker during e.g. the threading process.



### Professional knife drive from above

Provides the greatest, most robust cutting force. Even thick fabrics won't deflect the upper knife – so all fabric edges can be trimmed safely and professionally.



### Differential feed

Stepless differential feed ensures wave-free seams in knits, and prevents puckering in fine fabrics, whilst allowing deliberate gathering.



### Handwheel position indicator

Easy, ergonomic operation: with the aid of the vision panel and the red position indicators, you'll find the ideal threading position for the needles and the lower looper straightaway.



### Accessories in the looper cover

Here you'll find the most commonly used accessories, neatly arranged and ready-to-hand.



### Swing-out upper-knife arm

The upper-knife arm can be quick-released effortlessly at the press of a button to provide more room. This is particularly advantageous when, for example, you're working in coverstitch mode, or do not wish to trim the fabric edge.

## Including the most important presser feet



### Elasticator foot

The elasticator foot guides and stretches the elastic. Ideal for lingerie, bath- and sportswear, home textiles, etc.



### Blindstitch foot

The blindstitch foot features an adjustable lateral guide plate which takes the hard work out of sewing blind hems. Suitable for blindhemming, flatlocking and heirloom techniques.



### Coverstitch foot

This special foot can be fitted for absolutely flawless coverstitch seams. Suitable for seams, hems, bindings and decorative applications.

1300MDC



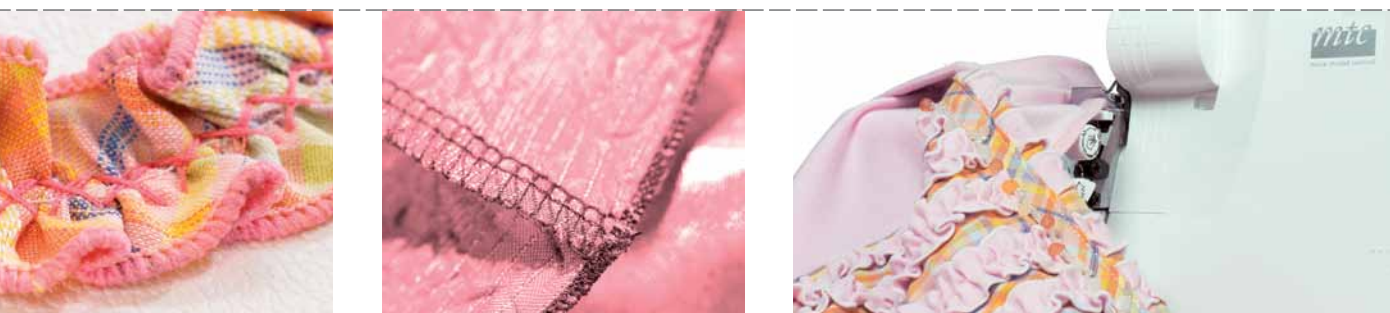
## 1150MDA BERNINA®



1150MDA

## *The ultimate in ease of use*

The smaller of the two BERNINA M models, the BERNINA 1150MDA, makes creative sewing with the overlocker absolute child's play. With this model, it's simplicity itself to find the right seam for every application, and to optimise it with a flick of the wrist using *mtc* technology. Beautifully simple – simply beautiful.



## Specials

### — *mtc* Thread Control:

For unrivalled ease in setting the **over-edge thread length** at the twist of a knob.

### — Seam width 3 – 9 mm

Lets you easily and durably sew together **thin and smooth fabrics** (e.g. silk) as well as **loosely structured textiles** (e.g. hand-knitted jumpers).

### — Automatic needle-threader:

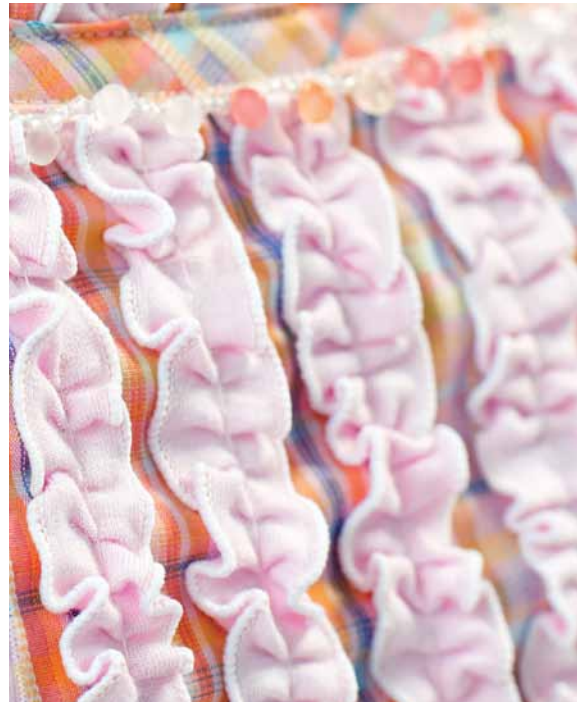
Lets you thread both needles **easily and without eyestrain**.

### — Thread lay-in system:

The BERNINA **lay-in system** allows quick and direct threading every time. Thanks to the automatic lower-looper threading system, it's also a cinch to thread the lower-looper.

### — Handwheel position indicator:

Easy, ergonomic operation: With the aid of the vision panel and the red position indicators, you'll find the ideal needle and lower-looper threading position in no time flat.



Like the top-end 'M' model, this overlocker offers patented *mtc* technology for unrivalled ease of control of the over-edge thread length. Together with additional highlights such as the differential feed for wavefree seams and the swing-out presser foot for speedy threading, it makes sewing a delightfully easy and relaxed experience, rather than a chore. But it's not just technical refinements that make this world-class overlockers. Its creative potential, fast sewing speeds and versatility are all things to be proud of. This machine is as well suited to the flawless

sewing of garments and home textiles as it is to quilting. And the wide range of accessories that comes as standard (universal, blindstitch and elasticator presser feet, etc.) can be further expanded with high-quality optional accessories such as a cording foot, gatherer, and multi-purpose foot. And whether you want to sew thick or thin, fine or coarse materials, the 3-step pressure adjustment lets you instantly fine-tune your overlocker to suit your fabric.

# 1150MDA BERNINA®

## *Ease of use as standard*



**Patented swing-out presser foot**  
Simply swing the foot out to the side to give yourself plenty of space for easy threading and hassle-free needle change.



**Rolled-hem lever**  
Simply flick the rolled-hem lever to switch effortlessly to a rolled-hem stitch and back again, with no need to change the stitch plate or presser foot.



**Differential feed**  
Stepless differential feed ensures wave-free seams in knits and prevents puckering in fine fabrics, whilst allowing deliberate gathering.



**Auto-threader for two needles**  
Actively supports you by letting you thread both needles easily and ergonomically.



**Front foot lift system**  
The front foot lift raises the front of the presser foot that bit higher, enabling accurate positioning of multiple layers of fabric and bulky projects such as hand-knitted jumpers beneath it.



**Threading system**  
The automatic lower-looper threading system lets you thread quickly and directly at all times. Thanks to the BERNINA lay-in system it is a breeze to insert the upper thread.



**Micro Thread Control**  
Thanks to the patented *mtc* thread control, the over-edge thread length can at last be set directly, giving you the perfect seam at the twist of a knob!

**Safety switch**  
The safety switch is activated as soon as you open the looper cover or the fabric-support plate, thus preventing the accidental operation of the overlocker during e.g. the threading process.



**Professional knife drive from above**  
Provides the greatest, most robust cutting force. Even thick fabrics won't deflect the upper knife – so all fabric edges can be trimmed safely and professionally.



**Handwheel position indicator**  
Easy, ergonomic operation: with the aid of the vision panel and the red position indicators, you'll find the ideal threading position for the needles and the lower looper straightaway.



**Accessories in the looper cover**  
Here you'll find the most commonly used accessories, neatly arranged and ready-to-hand.

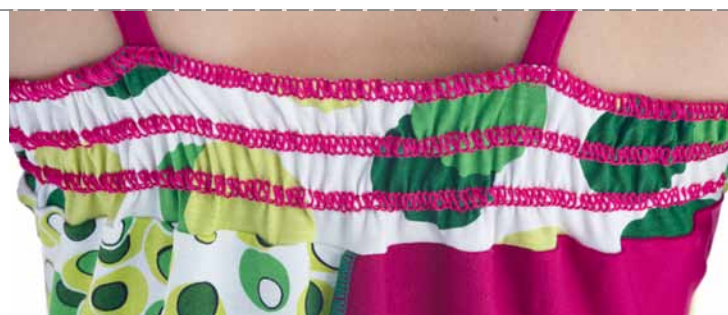
### Including the most important presser feet



**Elasticator foot**  
The elasticator foot guides and stretches the elastic as you insert it. Ideal for lingerie, bath- and sportswear, home textiles, etc.



**Blindstitch foot**  
The blindstitch foot features an adjustable lateral guide plate which takes the hard work out of sewing blind hems. Suitable for blindhemming, flatlocking and heirloom techniques.



**700D**  
**BERNINA<sup>®</sup>****800DL**  
**BERNINA<sup>®</sup>**

800DL | 700D

## *Compact and reliable*

The BERNINA 800DL and 700D models give you easy, affordable access to the fascinating world of overlocking. Practical and versatile features make these machines an absolute breeze to use.



### — Up to 15 stitch variations:

Choose from **15 overlocking-stitch variations** with 2-, 3- and 4-thread stitch patterns for all types of fabric.

### — Lay-in threading system:

The BERNINA **lay-in system** allows quick and direct threading every time. Thanks to the automatic lower-looper threading system, threading the lower looper is also a breeze.

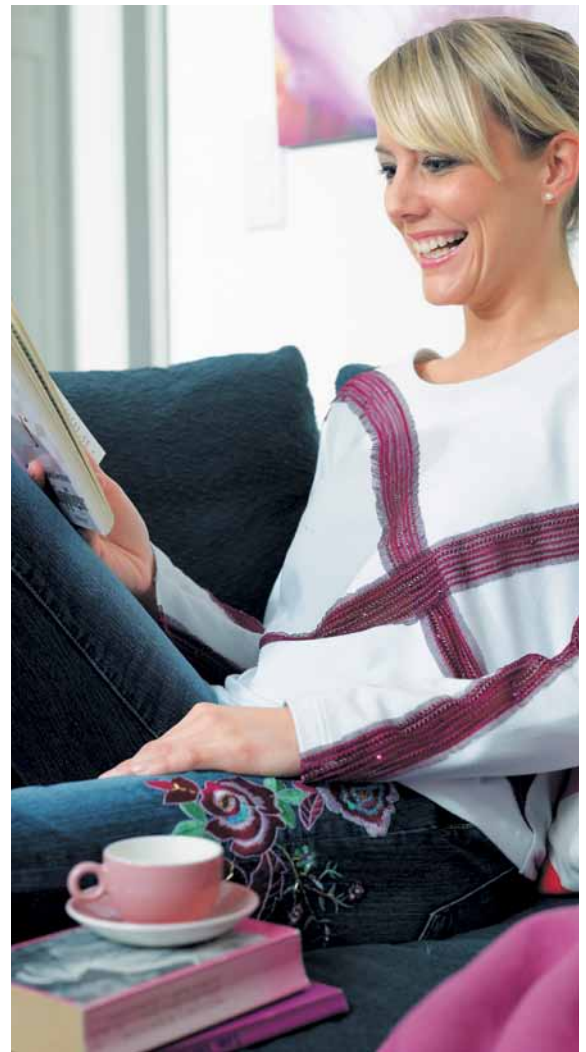
### — Differential feed:

**Smooth fabric feed** lets you sew without puckering and pulling the material out of shape. Deliberate decorative gathering is also possible, of course.

### — Rolled-hem lever:

To switch from **overlocking** to **rolled-hem** stitch and back again, simply flick the switch – there's no need to change either the stitch plate or presser foot.

## Specials



Although a number of sewing machines offer overlock stitches, these could never take the place of a genuine overlocker. The compact, robust, easy-to-operate BERNINA 800DL and 700D are an ideal complement to your sewing machine, giving you delightfully easy access to the creative world of overlocking.

Whether you're working with the finest silk and satin, robust denim, thick fleece or stretch fabrics, the BERNINA

entry-level overlockers will give you the sewing results you've always dreamed of – thanks especially to their ease of use, adjustable thread tension, and their 2-, 3- or 4-thread options. Perfect narrow and hard-wearing seams on stretch and woven fabrics, decorative rolled hems, gathering, sewing on elastic – all these tasks can now be done far more quickly, easily and skilfully.



**800DL**  
**BERNINA<sup>+</sup>**

**700D**  
**BERNINA<sup>+</sup>**

# Everything a beginner could want



## Professional knife drive from above

Provides the greatest, most robust cutting force. Even thick fabrics won't deflect the upper knife – so all fabric edges can be trimmed safely and professionally.



## Adjustable thread tension

The practical slides show you the current thread tension and allow you to make stepless adjustments as needed.



## Rolled-hem lever

Simply flick the rolled-hem lever to switch easily to a rolled-hem stitch and back again, without needing to change the stitch plate or presser foot.



## Lay-in threading system

The BERNINA lay-in system allows quick and direct threading every time. Thanks to the automatic lower-looper threading system, threading the lower looper is also a breeze.



## Differential-feed and stitch-length controls

These ergonomic, easily accessible controls let you adjust fabric feed and stitch length to perfection with the flick of a wrist – even whilst sewing.



## Differential feed

Stepless differential feed ensures wave-free seams in knits and prevents puckering in fine fabrics, whilst allowing deliberate gathering.



## Upper-looper cover

The upper-looper cover lets you overlock with just 2 threads, allowing you, for instance, to neaten individual layers of fabric or create decorative rolled hems with suitable fabrics whilst saving thread.

## Note:

The product features described here refer to the 800DL. The 700D's features are listed in the relevant table from page 22 onwards.

— **Professional  
5-mm-wide  
coverstitch:**

The tried-and-tested  
stitch for **decorative  
seams**

— **Looper  
thread tension:**

**Thread tension** is **steplessly adjustable**,  
making your work so much easier – especially  
with demanding fabrics.

— **Automatic chainstitch looper  
threader:**

Press down the threader, thread loop, release  
the threader – **threading could hardly be  
easier!**

— **Thread cutter:**

This practical tool makes it easy to cut the  
threads **after you finish sewing**, with no need  
to interrupt the flow of your work.

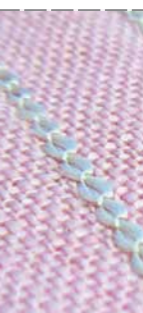
**Specials**

**009DCC**  
**BERNINA<sup>+</sup>**



## *The ideal addition: cover & chain*

Already have an overlocker or sewing machine, but want to be able to coverstitch and chainstitch as well? No problem. The BERNINA Funlock 009DCC is the ideal partner to give the crowning finish on textiles and garments you've sewn yourself!





Expand your creative scope! With the extensive range of functions and professional-looking stitches of the BERNINA Funlock 009DCC, you're equipped for virtually all eventualities.

**Simple hem with coverstitch:** This 5 mm coverstitch is the precise width most often used in off-the-peg clothing, so it will truly have you sewing like a pro!

**Flat joining seam with coverstitch:** With pyjamas, joggers or summer dresses, nothing should rub against your skin. The coverstitch lets you sew perfectly flat

joining seams for superb wearing comfort.

**Gathering with chainstitch:** Feel great in clothes that move and stretch with you: using elastic thread in the chain looper will produce highly elastic seams – ideally suited to sports- and children's wear.

**Simple hem with chainstitch:** Lets you create fine hem finishes for trouser and jacket pockets, and for especially decorative textiles such as pillows or furniture covers.



## Instant overlocking success

Whether you're sewing soft furnishings for your home or a new outfit, this overlocker will ensure that your projects are a success. The bernette 610D boasts a range of impressive features making it easy to use, and an attractive price tag making it especially suitable for beginners. The swing-out free-arm front means that threading is a cinch. Stitch length, thread tension and differential feed are all easily adjustable. Colour-coded markings show you the way. The bernette 610D overlocker – instant success with your projects!

### Built-in edge guide

The bernette 610D's built-in fabric-edge guide lets you guide the fabric accurately to create extra-beautiful seams. The guide can be removed in a single step.



### Easy seam-width adjustment

Quick and easy setting of the seam width using the separate dial on the left side of the machine.



### Easy threading

The swing-out free-arm front of the bernette 610D provides easy access to the threading paths. Colour-coded marking makes threading even easier.

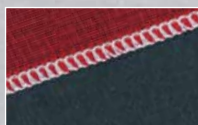


bernette 610D  
BERNINA®

# bernette

## BERNINA+

bernette 610D



### 2-, 3- and 4-thread seams

The bernette 610D provides all professional-standard seam types – from 2-thread flatlock stitch for joining and hemming stretch materials up to the 4-thread overlock stitch for neatening edges. No more frayed edges or puckered seams!



### Length of edge-wrapping thread adjustable

Thanks to exchangeable overlock stitch fingers, the amount of edge-wrapping thread is adjustable. Slack threads are history.



### Smooth sewing of heavy fabrics

The bernette 610D's extra-powerful 120-watt motor can even cope with heavy fabrics such as denim without any difficulty.



### Beautiful rolled hems

The bernette 610D allows for extra-fine adjustment of your rolled hems.

### Special accessories

A comprehensive range of accessories is available for the 610D.



### Clearly laid-out control panel

Easy-to-use control panel. Colour-coded markings make adjusting thread tension a breeze.



### Extra long spool pins

The extra long spool pins can accommodate large 1000-m thread cones, enabling neat and reliable thread supply.



### Differential feed

Stepless differential feed ensures pucker-free seams and allows deliberate gathering if required.



### Accessories in the looper cover

The bernette 610D comes with a wide range of accessories. The most frequently used ones are stored in the looper cover, so they are always to hand.



### Waste collector

Simply fit the provided waste collector onto the looper cover to keep your work area neat and tidy.

# Keywords

## Chainstitch

Two-thread stitch linked together on the underside of the seam. Used with woven fabrics because of its limited elasticity.

## Coverstitch

3- or 4-thread covering stitch with 2 or 3 parallel seams on the front of the fabric. A durable, flat stitch, for hems and joining seams. Also suitable for decorative purposes.

## Cutting width

Cutting width can be controlled smoothly and steplessly via the knife, and is therefore quickly and easily adjusted to the seam width.

## Differential feed

Working independently of each other, the feed-dogs are continuously adjustable, and ensure wave-free seams in jersey and knitted fabrics as well as preventing puckering in fine woven materials.

## Flatlocked (lapped) seam

This special 2- or 3-thread overlock seam is pulled apart flat after it is sewn. Especially suitable for decorative stitches in woven fabrics and knitwear, as well as for patchwork.

## Front foot lift system

The additional lift given to the presser-foot front makes it much easier to accurately position multiple layers of fabric and bulky projects under the presser foot.

## Gathering

Decorative effect when sewing seams. The differential feed can also be used to create a deliberate gathering of the fabric.

## LCD screen

User-friendly display of the personal reference settings and basic settings for the different stitch variations.

## *mtc* Thread Control (Micro Thread Control)

Thanks to the patented *mtc* Thread Control, thread tension need only be adjusted once – should you then alter the cutting width or fabric thickness, a simple twist of the special *mtc* knob fine-tunes the tension.

## Overlocker

Unlike conventional sewing machines, overlockers or sergers work with 2 to 5 threads at a time, intertwining them so as to create highly elastic seams such as those required for lingerie or sportswear.

## Overlocking

Sewing, cutting and neatening in a single process.

## Rolled hem

A professional edge finish for fine fabrics and jersey.

## Safety seam

Combination of an overlock seam with a chainstitch seam running independently but parallel to it, for the durable joining of firm woven fabrics. The BERNINA 1300MDC creates this hard-wearing safety seam in a single operation.


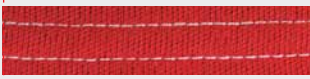
## Safety switch

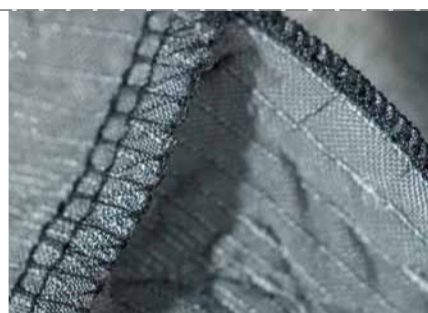
Automatically activated when the looper cover or fabric-support plate is opened, the safety switch prevents the accidental operation of the overlocker, e.g. when threading.


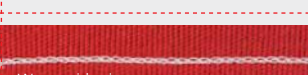
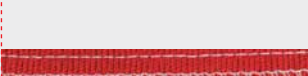

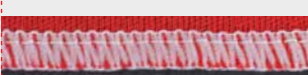





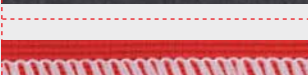

## Upper-looper cover

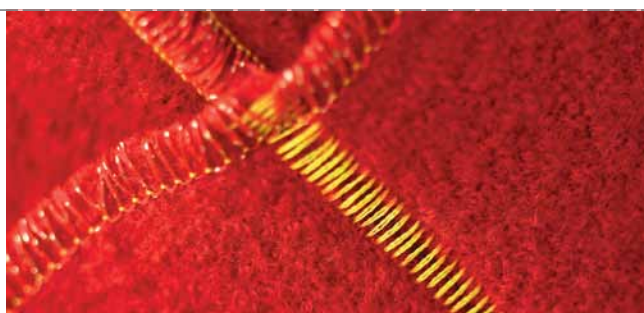
This plastic cover can be slipped over the upper looper to instantly turn a 3-thread seam into a 2-thread seam.

# Stitch variations







STITCH	1300MDC	1150MDA	800DL	700D	009DCC	610D	USE	EXAMPLE
4-thread coverstitch, wide (5.0 mm)	●						Durable, flat stitch for hems and seams in stretch materials. Suitable for flat seams, finishes with sandwiched or sewn-on elastic, and elastic binding. For the decorative topstitching of seams or elastic straps; may also be used with decorative thread in the looper (wrong-seam-side up).	
3-thread coverstitch, wide (5.0 mm) or 2.5 mm	●			●			Durable, flat stitch for hems and seams in stretch materials. Suitable for flat seams, finishes with sandwiched or sewn-on elastic, and elastic binding. For the decorative topstitching of seams or elastic straps; may also be used with decorative thread in the looper (wrong-seam-side up).	



STITCH	1300MDC	1150MDA	800DL	700D	009DCC	610D	USE	EXAMPLE
2-thread chainstitch seam	●				●		Having limited stretch, the chainstitch is ideal for fairly firm woven fabrics, seam stabilisation, and bindings, as well as for decorative effects (e.g. gathering variants) in finer fabrics for garments and home textiles. May also be used for decorative seams with decorative thread in the looper (wrong-seam-side up).	 Right-side view  Wrong-side view
5-thread safety seam, wide	●						The two different parallel seams and the limited elasticity of the chainstitch make this extremely hard-wearing seam ideally suited to firm woven fabrics such as jeans, uniforms, anoraks, etc. A highly elastic seam in lengthways- and crossways-stretch fabrics such as Lycra and cotton/Lycra.	
4-thread overlock seam with woolly nylon thread and built-in safety seam	●	●	●	●		●	An elastic, highly durable seam for knits such as jersey, machine knits and tricot from any natural or synthetic fibres, as well as for hand-knits. For seams in fine-to-medium-weight cotton, viscose, silk or synthetic fabrics such as e.g. batiste, crêpe de chine, poplin, satin, etc.	
3-thread overlock seam, wide	●	●	●	●		●	For neatening edges, seams, hems and facings; suitable for all fabrics. A soft, elastic seam for fine knits. For decorative and quickly sewn edge finishes, as well as effect seams in fairly firm woven fabrics, fluffy/furry materials and sturdy knits.	
3-thread super-stretch (with woolly nylon thread)	●	●	●	●		●	A highly elastic seam in lengthways- and crossways-stretch fabrics such as Lycra and cotton/Lycra.	
3-thread flatlock seam, wide (with decorative thread)	●	●	●	●		●	For a flat decorative seam in woven fabrics. Suitable for patchwork.	
3-thread rolled seam	●	●	●	●		●	A light seam for the finest silk, cotton or synthetic-fibre jerseys. Suitable for sewing on or inserting lace.	
3-thread rolled hem	●	●	●	●		●	An attractive, quickly sewn edge finish for all fine fabrics.	
2-thread overlock seam, wide (edge-wrapped with woolly nylon thread)	●	●	●			●	For neatening edges, seams, hems and facings; suitable for all fabrics. Reversible edge finishes. Effect seams in firm woven fabrics, fluffy/furry materials and sturdy knits.	
2-thread flatlock seam, wide (with decor. thread)	●	●	●			●	A flat, elastic decorative seam for knits and woven fabrics. Ideal for patchwork.	
2-thread rolled hem	●	●	●			●	Edge finish on hems, ruffles and flounces in fine and light woven fabrics or jerseys. Suitable for inserting lace in fine batiste.	



# Features

		STITCH VARIATIONS													
		Total number of stitch variations	4-thread coverstitch	3-thread coverstitch	2-thread chainstitch seam	5-thread safety seam	4-thread safety seam	4-thread overlock seam with built-in safety seam	3-thread overlock seam	3-thread overlock seam	3-thread super-stretch	3-thread flatlock (lapped) seam	3-thread rolled seam	2-thread rolled hem	2-thread overlock seam
	BERNINA 1300MDC	24	1	3	1	2	2	1	2	1	2	1	1	2	
	BERNINA 1150MDA	15	–	–	–	–	–	1	2	1	2	1	1	2	
	BERNINA 800DL	15	–	–	–	–	–	1	2	1	2	1	1	2	
	BERNINA 700D	7	–	–	–	–	–	1	2	–	2	1	1	–	
	BERNINA 009DCC	2	–	1	1	–	–	–	–	–	–	–	–	–	
	bernette 610D	12	–	–	–	–	–	1	2	1	2	1	2	–	

DELUXE FEATURES & THREADING AIDS												TECHNICAL SPE									
	2-thread flatlock (lapped) seam	2-thread rolled hem	2-thread wrapped edge	Needle-threader	Automatic lower-looper and chain-looper threader for machines with chainstitch	Swing-out presser foot	Handwheel position indicator	Colour-coded threading paths and diagram in looper cover	Direct threading	Automatic tension release when presser foot lifted	Differential-feed and stitch-length setting	LCD display of the recommended settings	Saving of personal settings on the LCD	Accessories in looper cover	Sewing light	Safety switch activated when covers opened	mtc-thread control	Overlock seam width	Knife drive from above	High, 2-step presser-foot lift with automatic front lift	
2	1	2	block	Yes*	Yes	Yes	Yes	Yes	Yes	Yes	Yes	Yes	Yes	Yes	Yes	Yes	Yes	3–9mm	Yes	Yes	
2	1	2	auto	Yes	Yes	Yes	Yes	Yes	Yes	Yes	–	–	Yes	Yes	Yes	Yes	Yes	3–9mm	Yes	Yes	
2	1	2	–	Yes	–	–	Yes	Yes	Yes	Yes	–	–	–	Yes	–	–	–	3–7mm	Yes	–	
–	–	–	–	–	–	–	Yes	Yes	Yes	left	–	–	–	Yes	–	–	–	3–7mm	Yes	–	
–	–	–	–	Yes*	–	–	Yes	–	Yes	Yes	–	–	–	Yes	–	–	–	–	Yes	–	
1	1	1	–	–	–	–	Yes	–	Yes	Yes	–	–	Yes	Yes	–	–	–	4–7 mm	–	–	

\* including chain looper

Not all models are available in all countries. Subject to changes in features and design without notice.  
For further information, consult your BERNINA dealer. Errors and omissions excepted.

## SPECIFICATIONS

## STANDARD &amp; OPTIONAL ACCESSORIES

	3-step presser-foot pressure	Rolled-hem lever built into stitch plate	Sewing speeds of up to 1500SPM	Exclusive combination presser foot for overlock and chainstitch, with built-in tape guide	Standard overlock presser foot for overlock tape guide	Standard overlock presser foot with built-in	Blindstitch foot	Elasticator foot	Compensating foot for perfect coverstitching	Set of needles	Special coverstitch needle set	Waste collector for excess fabric	Hem guide	Gathering foot, Multi-purpose foot, Cording foot	Gatherer	Chainstitch foot	2-thread converter	Tools and accessories in separate bag	Dust cover
	Yes	Yes	Yes	Yes	–	–	Yes	Yes	Yes	Yes	Yes	Yes	Optional	Optional	Optional	–	Yes	Yes	Yes
	Yes	Yes	Yes	–	Yes	–	Yes	Yes	–	Yes	–	Yes	Optional	Optional	Optional	–	Yes	Yes	Yes
	–	Yes	Yes	–	–	Yes	Optional	Optional	–	Yes	–	–	Optional	Optional	–	–	Yes	Yes	Yes
	–	Yes	Yes	–	–	Yes	Optional	Optional	–	Yes	–	–	Optional	Optional	–	–	–	Yes	Yes
	–	–	Yes	–	–	–	–	–	Yes	Yes	–	–	–	–	–	Yes	–	Yes	Yes
	–	–	1300 SPM	–	–	Yes	Optional	Optional	–	Yes	–	Yes	Built-in	–	Optional	–	Yes	–	Yes



Benartex, Brewer and oesd are wholly owned subsidiaries of BERNINA Holdings Ag. The well-known thread manufacturer Mettler is our partner.

# A Tradition of Precision

## Over 100 years of sewing experience



Swiss products have always had a reputation for mechanical precision and superb workmanship – two of the hallmarks of both our overlockers and our sewing, embroidery and quilting computers. Today, unrivalled quality and cutting-edge technology put BERNINA sewing machines at the world forefront, making creative modern textile work easier than ever before.

### 100 years of BERNINA

World-famous sewing-machine manufacturers BERNINA have been based on the shores of Lake Constance in Steckborn, Switzerland for over 100 years now. Our **tradition-steeped** business, now run by the fourth generation of the same family, develops and manufactures high-quality sewing and embroidery computers, as well as overlockers. BERNINA's leading role has been achieved thanks to our passion for sewing, our **quality without compromise** in R&D and technology, and pioneering innovations that have written new chapters in sewing-machine history. **Innovations** such as

Microsoft® Windows®-operated sewing and embroidery computers and BSR (BERNINA Stitch Regulator) – a world-first – are highlights consolidating our place at the cutting edge of technology. User-friendliness is of top priority in the development of new features and functions. At the same time, we aim to inspire our customers and support their **creativity** in various ways, including **free professional training sessions** on our machines. Beyond this, and to ensure the best possible local service, BERNINA cooperates closely with trusted **dealerships in more than 60 countries.**

