

China Blue - Breakfast Cushion Created by Joy Harvey



China Blue Texture Cushion

Designed using the Bernina Software V8.

Method:

Beautiful bed linen and textured pillow throws have never been more popular than now. Create your own timeless elegance with a China Blue and grey embroidered linen breakfast pillow.

Creating the Design:

I used a leaf from my back yard. Place baking paper over the leaf, rub with a HB pencil until you get a clear shape on the paper. Define the veins with heavier lines. Cut around the leaf shape and place on the scanner.



Open The Bernina Software V8

Select the New page icon



Scanning the Leaf : Lay the leaf shape onto the scanner.

Click the

Artwork

Tab

Click on the

Scan Icon

Select scan

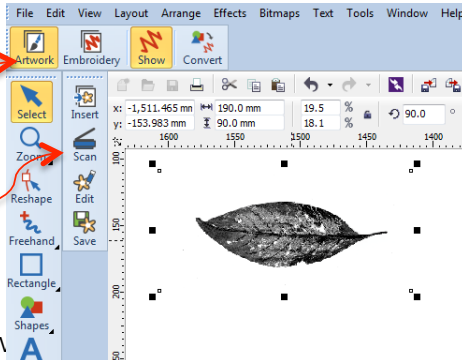
using

the default

settings.

The Design w

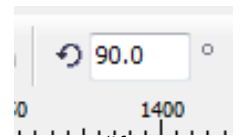
Canvas



Materials List:

- ¼ Metre of Linen Fabric
- ¼ Metre of Pliable Soft Iron on Interfacing
- 1 x Cushion Filler Size 14' x 21"
- 1 x Polyester thread to match fabric
- 1 x Contrasting embroidery thread
- 1 x18" Invisible zipper to match fabric
- Bobbin Fill
- Bernina Feet #1,35,4/4D
- Pencil, HB
- Quilters Rulers,
- Rotary Cutter
- Baking Paper

Rotate the design (If required) **90 Degrees** Touch **ENTER** on the key board.



The Black Sizing handles should appear (if not click on the design).

Cropping the leaf to the correct size :

Click on the little black tag at the lower right hand side of the

Erase Icon – the Crop Icon will show, Click

Click and drag a box around the leaf, then

enter into the X and Y box

the exact size 190mm x 90mm –

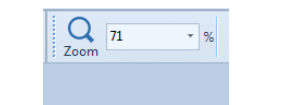
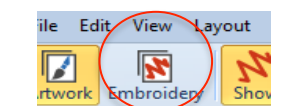
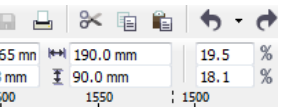
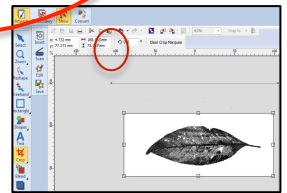
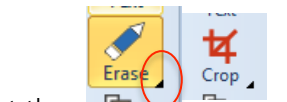
touch the **ENTER** on the keyboard

Click on the **Embroidery tab**

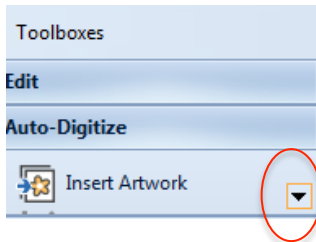
Embroidery Canvas To view the design at the correct size, click on the

Zoom Box and select.

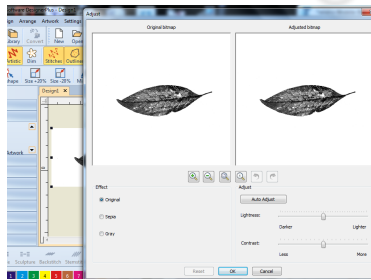
'To Selected' (The size may have changed slightly because of the proportional lock)



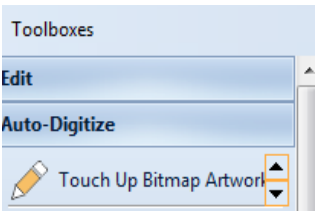
From the Toolboxes, Click on **Auto-Digitize** Scroll down with the black arrow to **'Adjust'** and click.



A box will open, check on **Original**, adjust the **Lightness -3** **Contrast - 10 - OK** (the adjustments will depend on the type of drawing that you have made) Click on **OK** **Still in Auto-Digitize**



Scroll down to **'Touch up' Bitmap Artwork'** and Click. A box will open, click on **Home'**

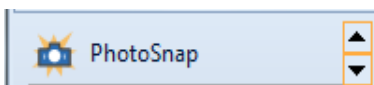


A number of different tools will be available, if required, for touching up the graphic of the leaf.

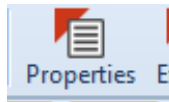
To return to the **Embroidery Canvas** click on the **down arrow** and **'Exit and Return to Document'**



While you are still in **Auto-Digitize** and with the design selected, Scroll down to **PhotoSnap** and Click.

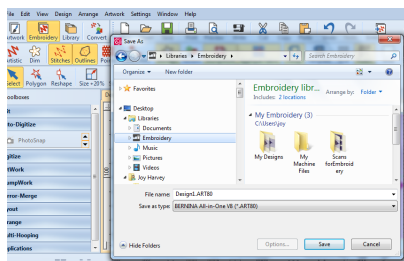


This will add the stitches to the Graphic. While the design is selected, Select **Properties** Icon.



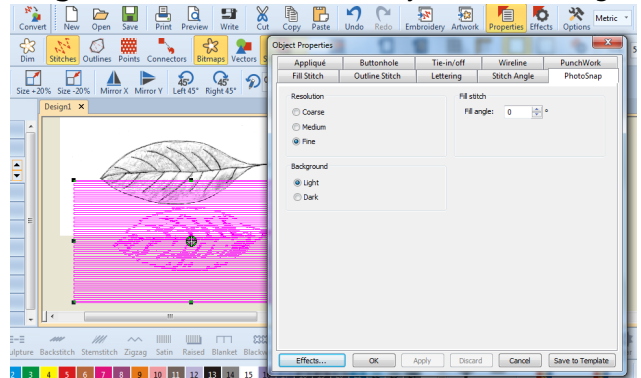
From the tabs, select **-PhotoSnap** click on **Fine - Apply - O.K.**

File- Save as - Give the design a name - The picture and the stitches will be saved With the design. **Save**

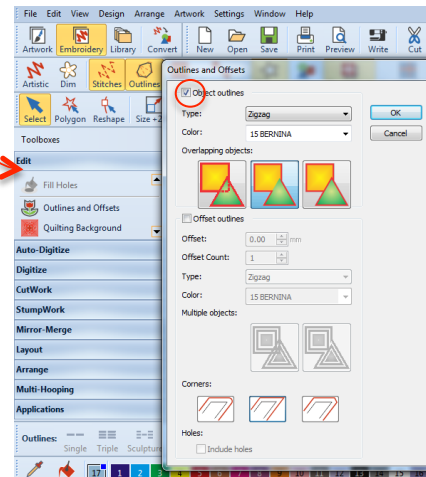


While the design is selected, move (Click and Drag) the stitches away from the picture. **De select** the stitches and **Select** the picture and delete. See **diagram A**.

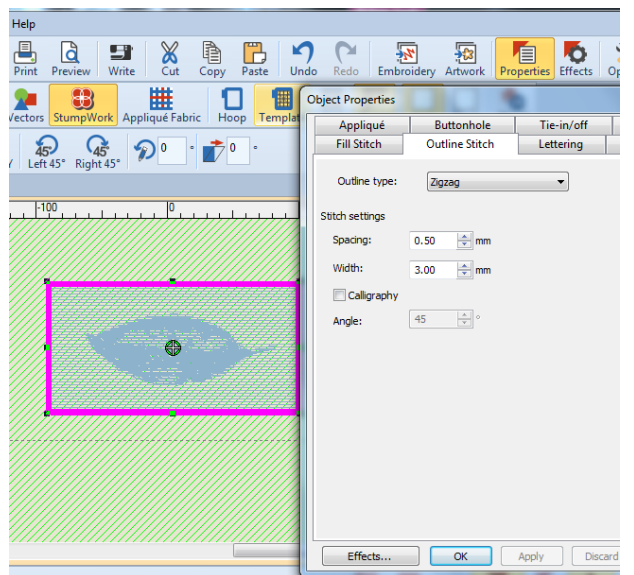
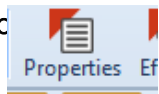
Diagram A- Move stitches away from the design



Select the Design- From the Toolboxes, **Select Edit -** Scroll to **Outlines and Offsets**. Place a tick in the **Object and Outlines**. In -Type - **Select -Zig-Zag** In Colour - **Select - 15 Bernina White-** **Select Corners Sharp** (middle icon) **OK**.



You should be back at the design! Click on the outline of the design. While the outline is selected. **Select Properties**, and box will open- In **Stitch Settings-** Type in **-Spacing 0.50mm - OK**

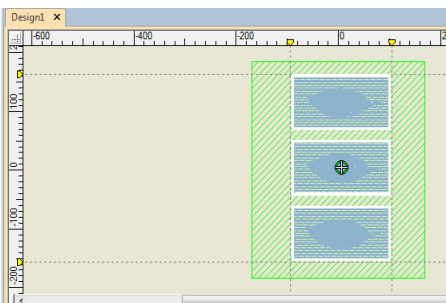


Hold down the **CTR + A** key, this will select both the **objects and the outline** of the design..

Group both together so they won't move away from each other. – (Short cut key - **Ctrl + G**)

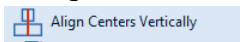
Cloning the Design: (Turn the hoop off if it is on by clicking on the hoop icon). While holding down the right mouse, click onto the design, drag the clone design away from the original. Repeat until you have three designs.

While holding down the **CTRL** key, click on the **Original**, the **second**, and the **third** design.



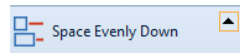
From the **Toolboxes** - Go to **Arrange**

Scroll to the, **Align Centres Vertically**-click.



Scroll to

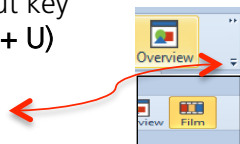
Space Evenly Down - Click



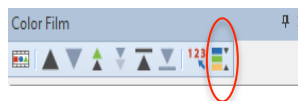
Select all three of the designs by using the short cut key

Ctrl +A then **Un-group (Ctrl + U)**

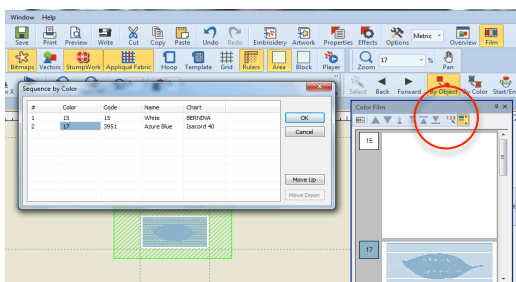
Select all of the design again **CTRL + A**



Open the **Colour Film** Icon and select **Sequence by Colour** so that all the blues will sew out and all the whites will sew out.



sequence by select-OK.



Re Group the Design – CTRL +A

Create a Work Area:

Creating the work area in the software will give you the design proportions against the actual size of the cushion.

Right click onto the Icon, 'Area' a box will open.



Enter the width and length measurement of the cushion filler, in metric.

(length 570mm by width 400mm).

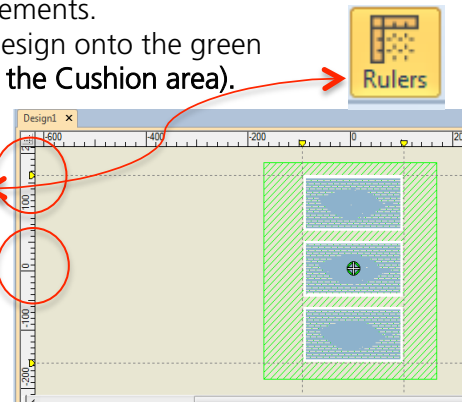
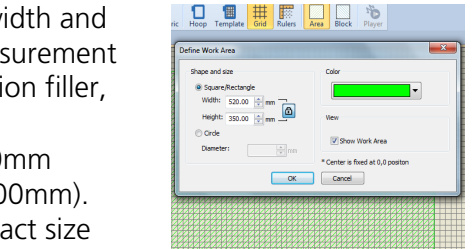
I use the exact size of the cushion filler.

However you can

use whatever size you have available just adjust the measurements.

Move the design onto the green area (this is the **Cushion area**).

Click on the **Ruler tab** Click on number where you require the guides.



NOTE:

To create a guide, click on either ruler – horizontal or vertical- then click-and drag it into position.

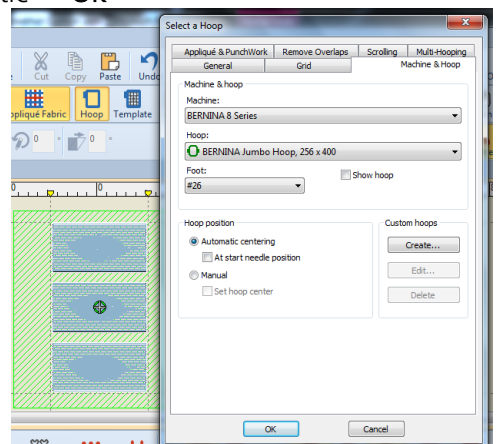
Before you send the design to the machine, **Right mouse click on the hoop**.

Select the **machine type**

Select the **Jumbo Hoop**

Select the presser foot **#26**

Automatic - **OK**



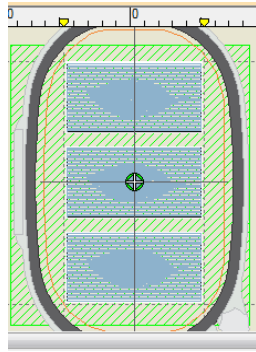
Click on the **Icon hoop**, the hoop will appear.

Saving to a USB Stick.

Insert a USB Stick that has been formatted to a FAT32 into the computer.

From Embroidery Canvas, Select the Icon – **Write**. From the **Device selection**, click on **exp**.

Safely remove the USB and place it in the machine.



Centre the prepared front fabric into the Jumbo hoop. (see fabric Preparation)
Set machine up for Embroidery and Complete the stitching.

Fabric Preparation:

Fabric Type - Linen: The pillow is decorative and is intended to sit on a bed and therefore a softer look is required rather than one for a sofa.

Interfacing: Press a pliable interfacing to the back of linen, enough for the front and back of the cushion. (This will also act as stabilizing)

Font of Cushion: In preparation for Embroidering on the fabric, cut the front piece 2cm larger than the Cushion Filler (14' x 16"). This allows for any adjustment after the completion of all the embroidery.

Cushion Back: I like the look of a very plump cushion and therefore I don't add seam allowance, except at the lower edge where the Invisible zipper will be inserted. Add 2cm to the lower edge.

Front and Back: Trimmed back on three sides to the exact measurement of the cushion filler, leaving the extra 2cm on the lower edge for inserting the invisible zipper.

Machine Settings:

- Invisible Zipper Foot #35
- Zipper Foot #4/4D
- Standard Foot #1/1D
- Needle stop down.



Attach the Invisible Zipper Foot #35 to the machine.

Overlock the lower edges of the front and back pieces.

On both sides of the front and back, press the seam allowance to the wrong side. The crease line will act as a guide. Lightly press the zipper coils flat.

Centre the zip across the lower edges of the cushion. Mark the position of the zip with a line at the top and bottom of the zip.

Hint: At the top of the zipper and on both sides, I pin the zipper into place leaving the seam allowance free as if it was already stitched into the seam. This prevents the tape mixing up.



You can either tack down the zipper or just add a few pins along the way.

With the needle in the centre, place the coil in the left groove of the Invisible Zipper Foot. Stitch along the tape using the pressed creased as a guide until you reach the zipper pull.

On the right hand side of the fabric, place the zipper coil into the right hand groove of the zipper foot. Stitch down until you hit the zipper pull.

Change the presser foot to the standard zipper foot and stitch the open seam closed. Pull the zipper head open so that when you stitch around the cushion, you will be able to turn through and insert the filler.

Change presser foot to 1D.

Place the front and the back right sides together. Line up the presser foot side edge with the raw edges of the cushion and straight stitch completely around the cushion. Overlock all the raw edges. Trim Finish by pulling through to the right side and inserting the cushion filler.