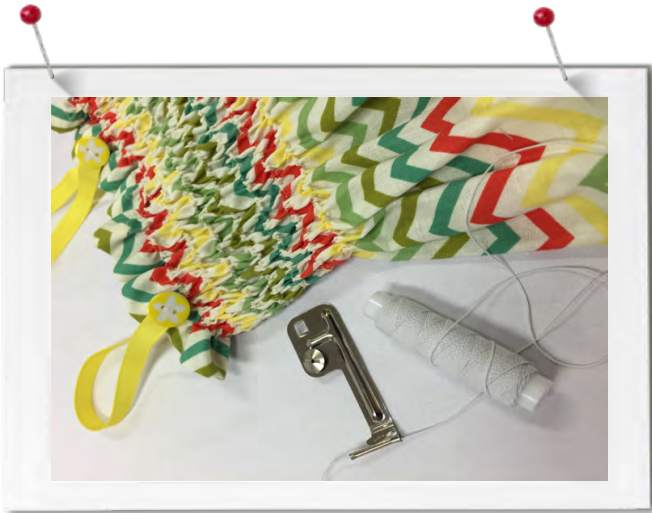


# Girl's Shirred Dress



## Materials List

- Printed Fabric
- 1.5m of 1cm Ribbon
- 4 x Buttons
- Polyester Shirring Elastic
- 2.5mm Twin Needle
- 2 Reels of Matching Thread
- BERNINA Pintuck Attachment

## Method

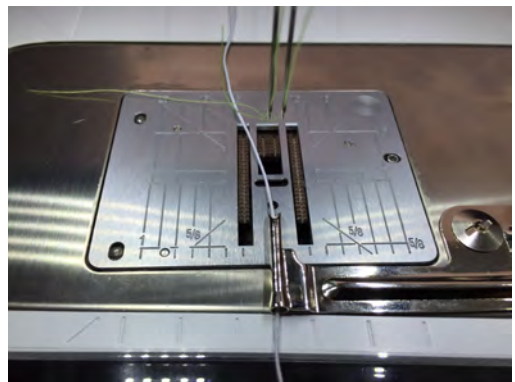
- Take the chest measurement of your model. Also measure the finished length that you would like the dress to be.
- Cut a rectangle from your fabric that measures a minimum of twice the chest measurement, and the finished length plus 5cm.

*i.e. If your chest measurement was 50cm and the length 60cm cut the rectangle 100cm x 65cm.*

**NB:** If you would like a fuller look to your dress, you can increase the chest measurement by more than double

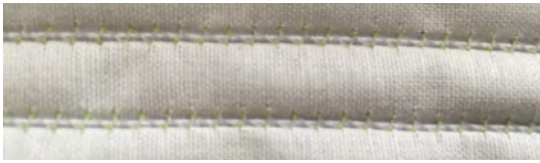
- Hem one of the longest sides of your cut fabric. This will become the top of the dress so if the print is directional, ensure that it is the correct side.

- Take of your machines presser foot. Attach the BERNINA Pintuck Attachment. Thread your shirring elastic through the attachment. Insert your twin needle and thread each one.



- Place pressure foot #1 on the machine. Select straight stitch and increase the stitch length to 3mm.

- Place your rectangle of fabric right side up with the hemmed edge to the right. Start your first row of stitching running it parallel to the top hem. Ensure that you leave a large tail of thread and elastic at the beginning. As you stitch you will see two rows of straight stitching on top, and a zig zag on the bottom. The shirring elastic will be caught under the zig zag on the back. When you have finished your row, leave a large tail of thread and elastic.



- Continue stitching your rows of shirring using the same method. To help keep the rows straight use the edge of your foot as a guide. As you stitch ensure that the shirring elastic is running freely. You can stitch as many rows as you like.



- When you have completed all your rows, take the tails of thread and elastic on one side and tie them all in a knot



- Take the tails of shirring elastic from the unknotted side. Start to pull the elastic until you see the fabric gather up. Keep pulling until you are happy with the level of gathering.



- When happy with how it looks, secure the long tails of shirring elastic by tying them in a knot.
- Stitch a French seam down the centre back to secure the ends. Hem the dress.
- Try the dress onto your model and work out the length and placement of your straps. Stitch the straps in place and cover the ends with buttons.

