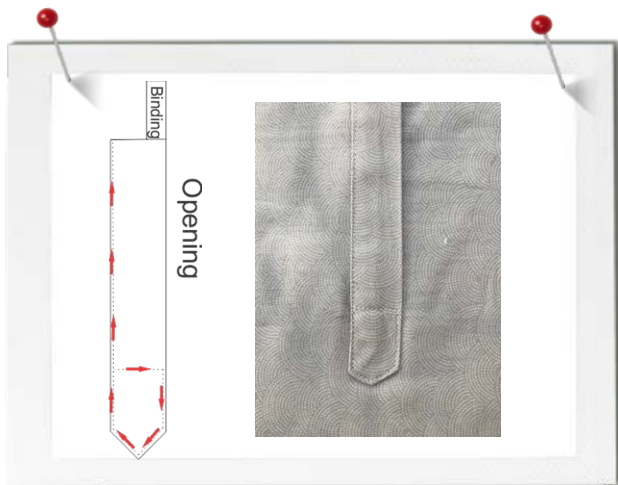


Fact Sheet: *Shirt Making for Beginners*

Constructing Shirt Back, Front and Plackets



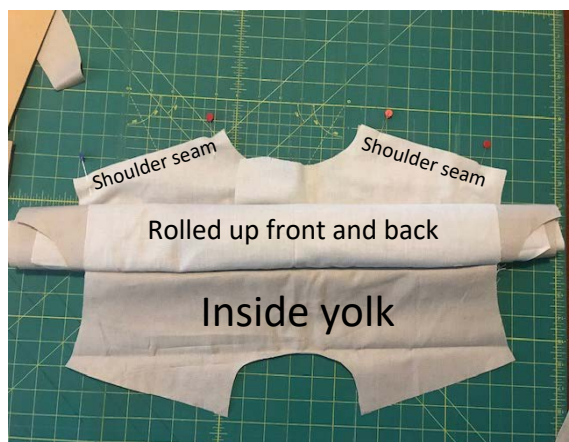
There are many different ways to construct the yoke and the sleeve plackets, the methods below are my favourites. Why not give them a go.

Now you want to carefully roll both the back and front panels up to the shoulder seams, making sure not to catch the inside yoke piece we moved down earlier. As you can see in the below picture, the front and back rolled neatly, the back yoke we had moved earlier and the pinned shoulder seams.

Back and Front

To achieve a nice even straight stitch, attach the straight stitch plate and Jeans foot #8. Together, they will give the greatest possible stability on any fabric.

Follow the pattern instructions to attach the yoke to the back panel. To join shoulder seams for both back and front, I will be doing something a little different to the instructions. This step will eliminate a lot of basting. First you will start with the back panel. Attached yoke pieces right side facing up. Carefully fold the inside yoke "the one facing the table" out of the way and pin and the front and back shoulder seams together as pictured below.



Bring the shoulder seams of the inside yoke to the ones we pinned earlier, you will then have three layers of fabric, all shoulder seams.

Now sew shoulder seams together.



This may look a bit odd at the moment but if you carefully pull all of the bulk through the armhole, you will end up with both the shoulder seams and the yoke all neatly in-cased.



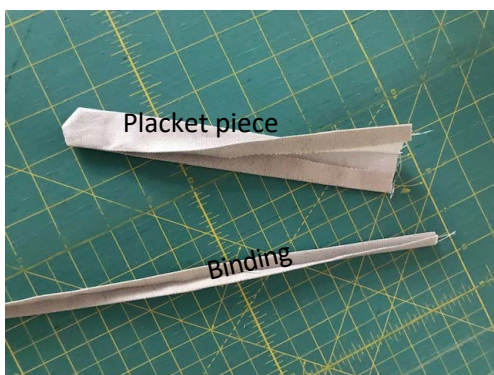
Give all seams a good press. Attach Edgestitch foot #10 and normal stitch plate. Move needle 3-4 positions to the left. Use the guide on the foot to help you stay nice and straight. Edgestitch the yoke and the shoulder seams.

Sleeve plackets

Mark out your sleeve placket cut line and cut as per the instructions.



Prepare the binding. You can make your own or use a pre-made binding. Sew the placket piece as per the instructions, turn through and press.



Place the binding over the seam and pin in place. Make sure you sew all the way to the slit without catching the triangle piece at the bottom.



Bring the binding to the right side of the fabric. Sew along the bottom edge of the triangle and binding, this will keep them in place for the next few steps.



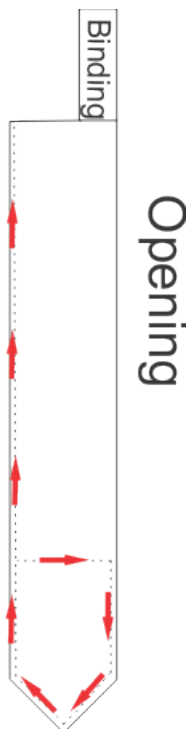
Bring the placket piece to the other flap. Make sure you keep the bottom of the placket nice and square as this will cover the tail of the binding and any raw edges.



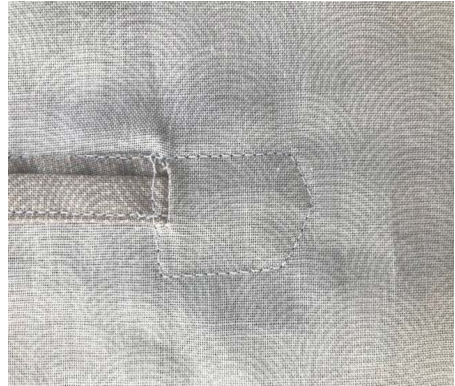
Straighten out the sleeve placket.
Make sure the tail of the binding is sitting on the right side of the fabric.
This will hide it under the point of the placket piece.



Follow the sewing diagram below using presser foot #10 (Edge stitch) and move the needle position 3-4 times to the left. Use the guide on the foot and follow the direction of the arrows. When edge stitching, be careful not to catch the binding side.



Give the placket a good press and make sure you have a neat finish on both the inside and outside of the finished yoke.



Stay tuned for the next installment of Shirt Making for Beginners.