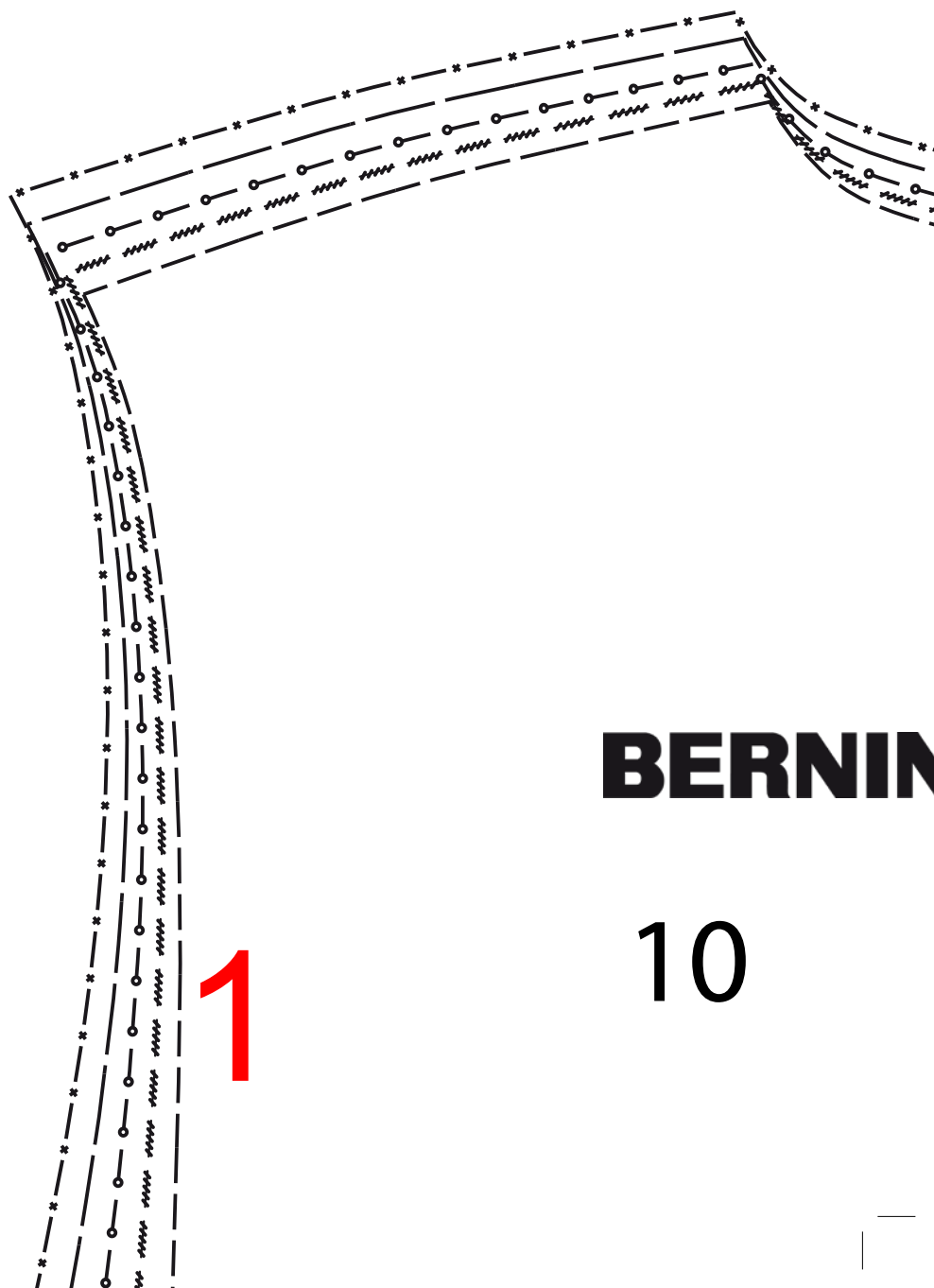


10 x 10 cm



Für Körpergrösse/ for heigth/ pour la taille 168 cm:

Grösse/ Size/ Taille	34	36	38	40	42	44	46	
Oberweite/ Bust/Poitrine		80	84	88	92	96	100	104
Taillenweite/ Waist/ Taille		64	67	71	75	79	83	87
Hüftweite/ Hip/ Hanche		90	93	96	99	102	105	108
Vord. Taillengl./ Front waist length/ Longueur taille devant		42	43	44	45	46	47	48
Rückw. Taillenlg./ Back waist lenth/		41	41	41	42	42	42	42

Für Körpergrösse/ for heigth/ pour la taille 66 Inch:

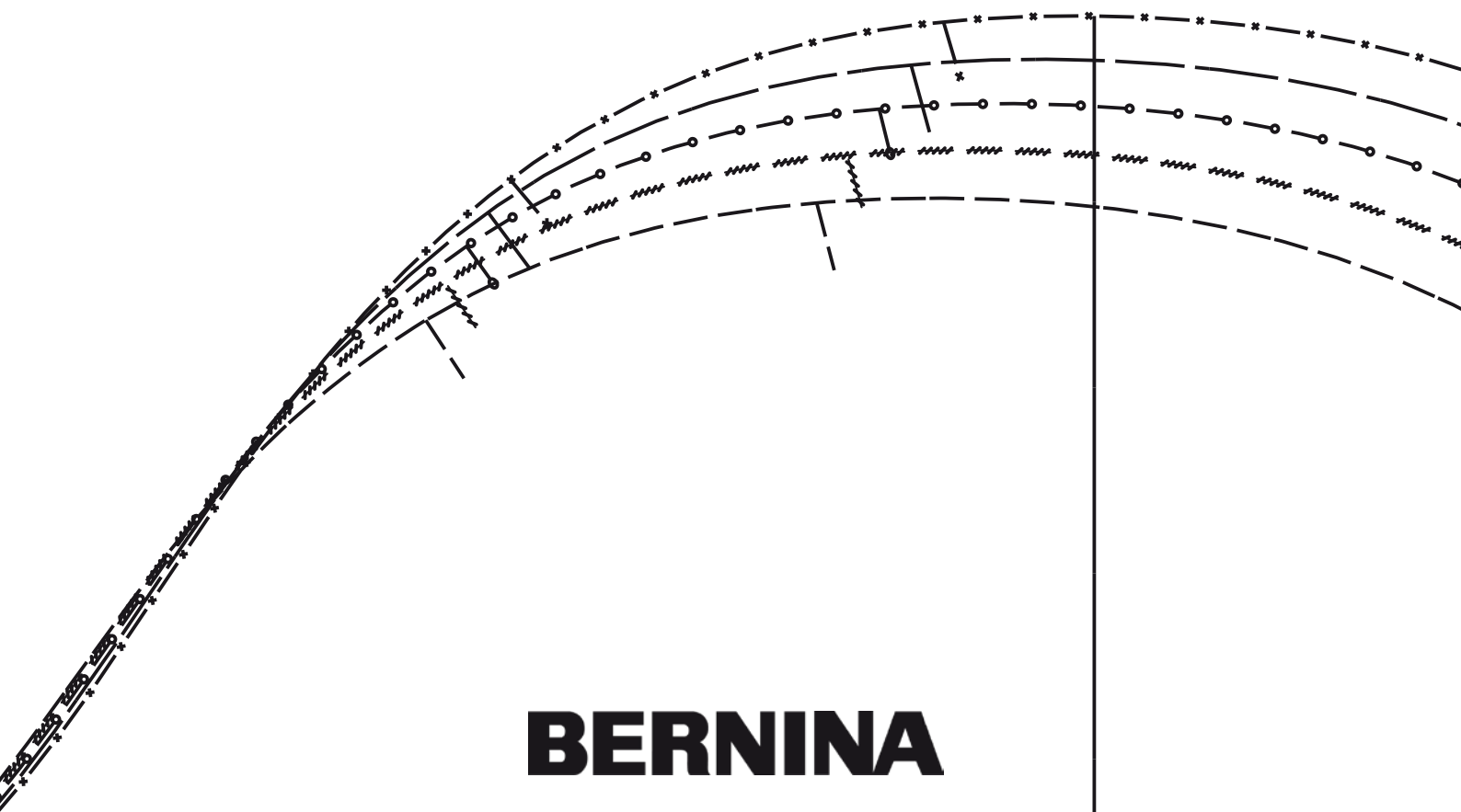
Grösse/ Size/ Taille	34	36	38	40	42	44	46	
Oberweite/ Bust/Poitrine		31,5	33	34,6	36,2	37,8	39,4	40,9
Taillenweite/ Waist/ Taille		25,2	26,4	28	29,5	31,1	32,7	34,3
Hüftweite/ Hip/ Hanche		35,4	36,6	37,8	39	40,2	41,3	42,5
Vord. Taillengl./ Front waist length/ Longueur taille devant		16,5	17	17,3	17,7	18	18,5	18,9
Rückw. Taillenlg./ Back waist lenth/		16	16	16	16,5	16,5	16,5	16,5

Legende/Legend/ Légend

Grösse/	---	---	---	---	---	---	---	34
Size/	---	---	---	---	---	---	---	36
Taille	~~~~	~~~~	~~~~	~~~~	~~~~	~~~~	~~~~	38
	—○—	—○—	—○—	—○—	—○—	—○—	—○—	40
	---	---	---	---	---	---	---	42
	—*—	—*—	—*—	—*—	—*—	—*—	—*—	44
	---	---	---	---	---	---	---	46

NINA

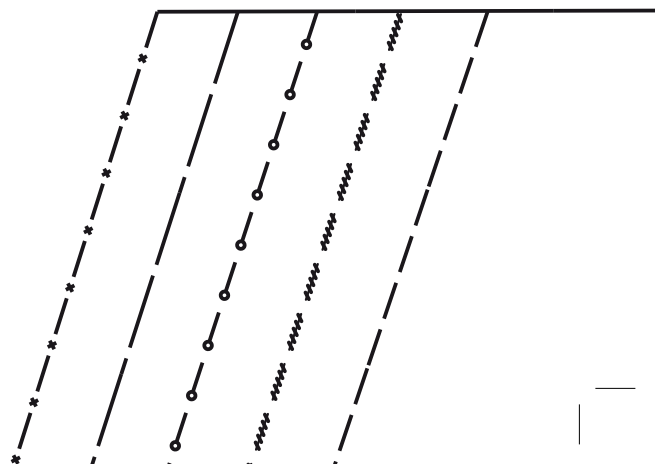
2

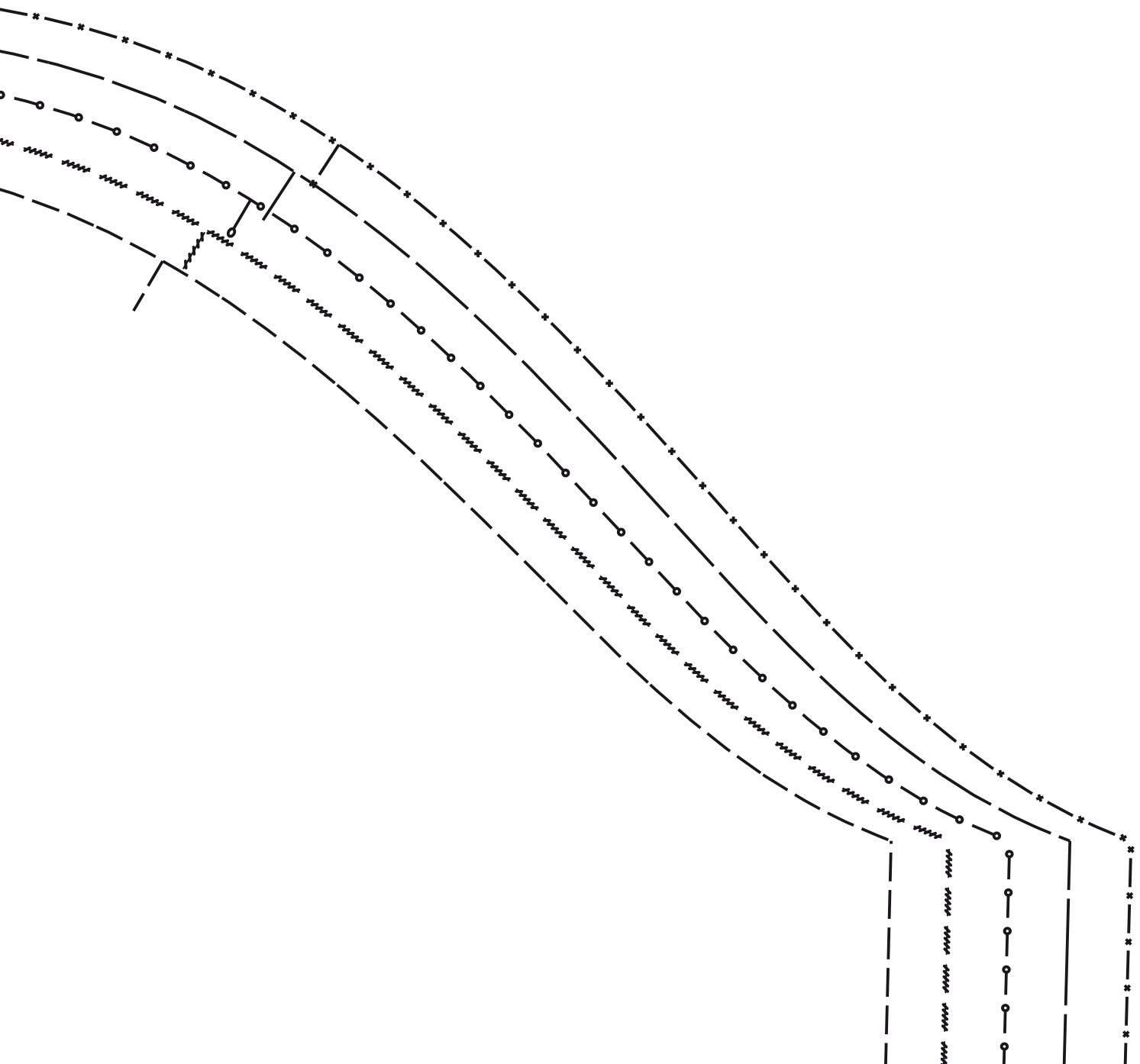


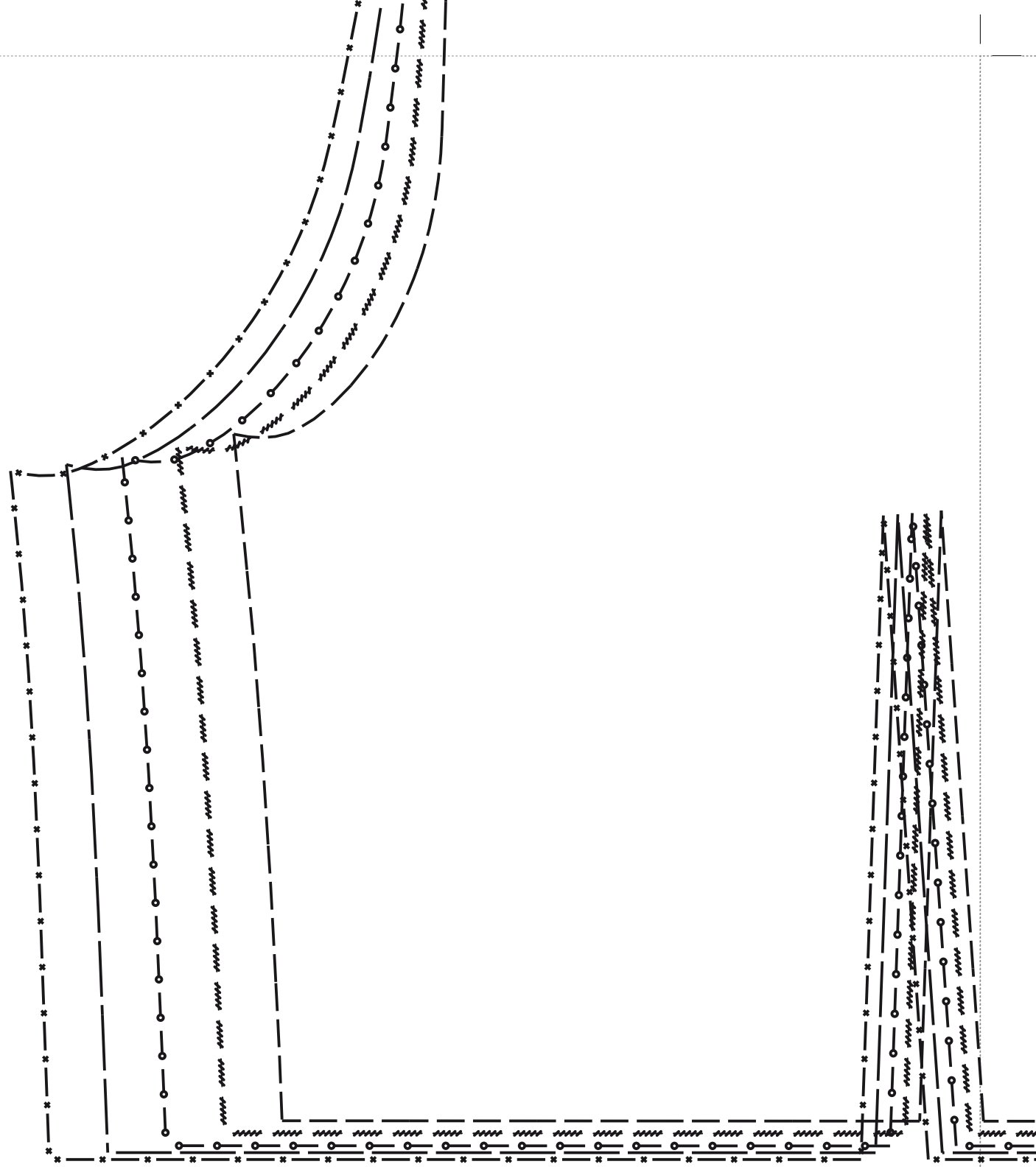
BERNINA

13

3



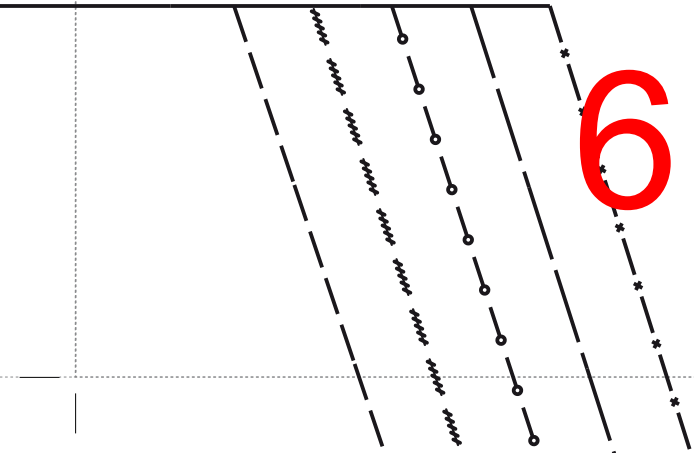
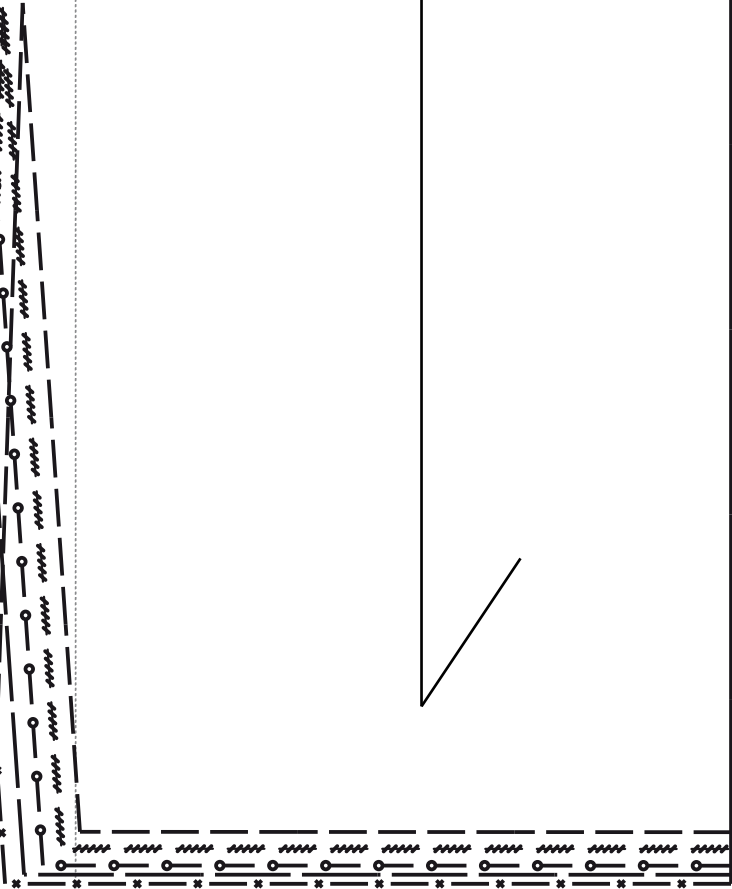




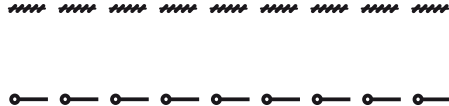
5

BERNINA

14



6



7

BERNINA

16

8

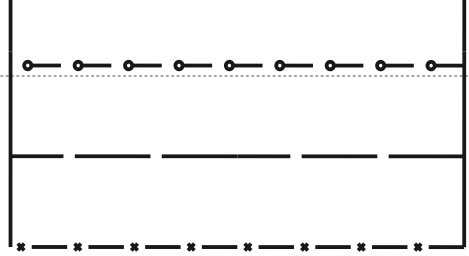
lez/Mitad delantera Kankaan taite/Etukappaleen keskikohta Ripiegatura della stoffa/Centro davanti 切り抜いた生地 / 前身頃中心
д и н а Tygvikning/Främre mitt

BERNINA

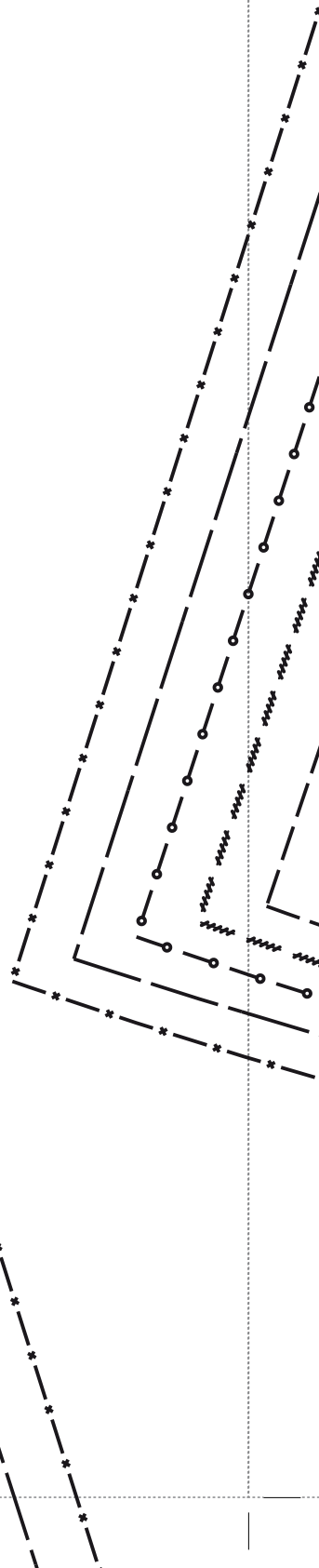
15

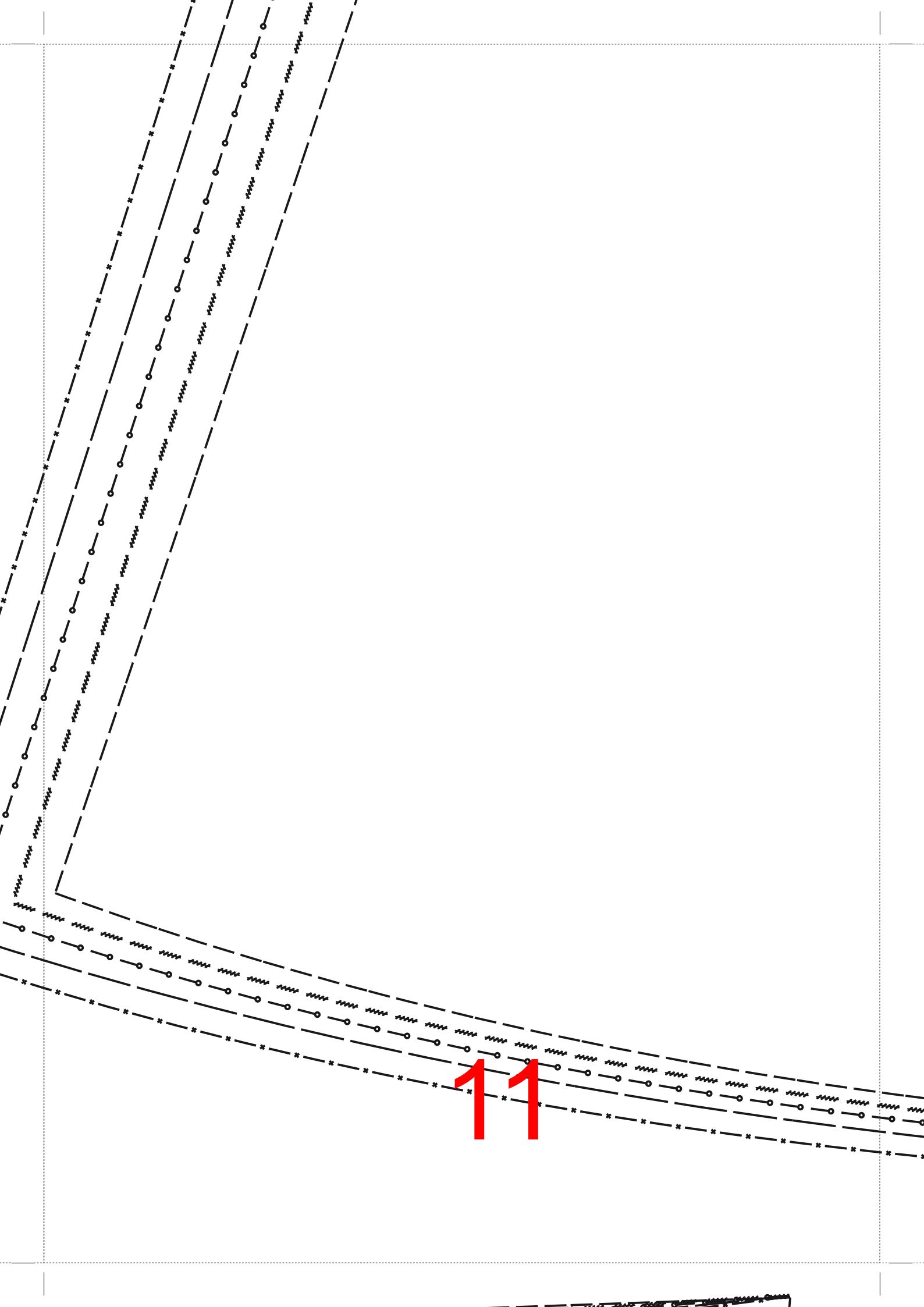
9



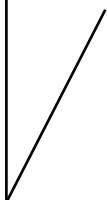


10

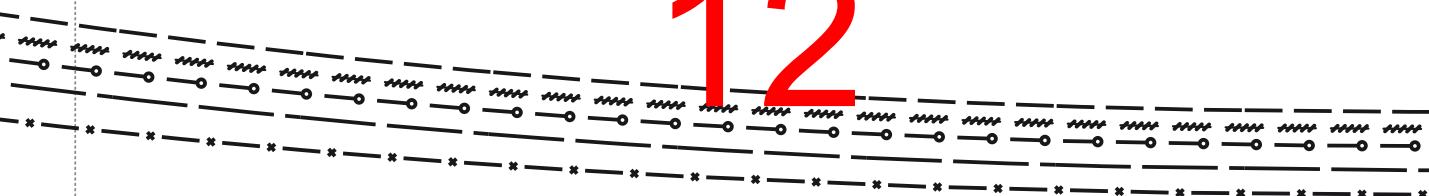




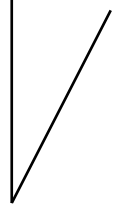
chter Midt bak 3 а д н я я с е р е д и н а Bакре mitt



12

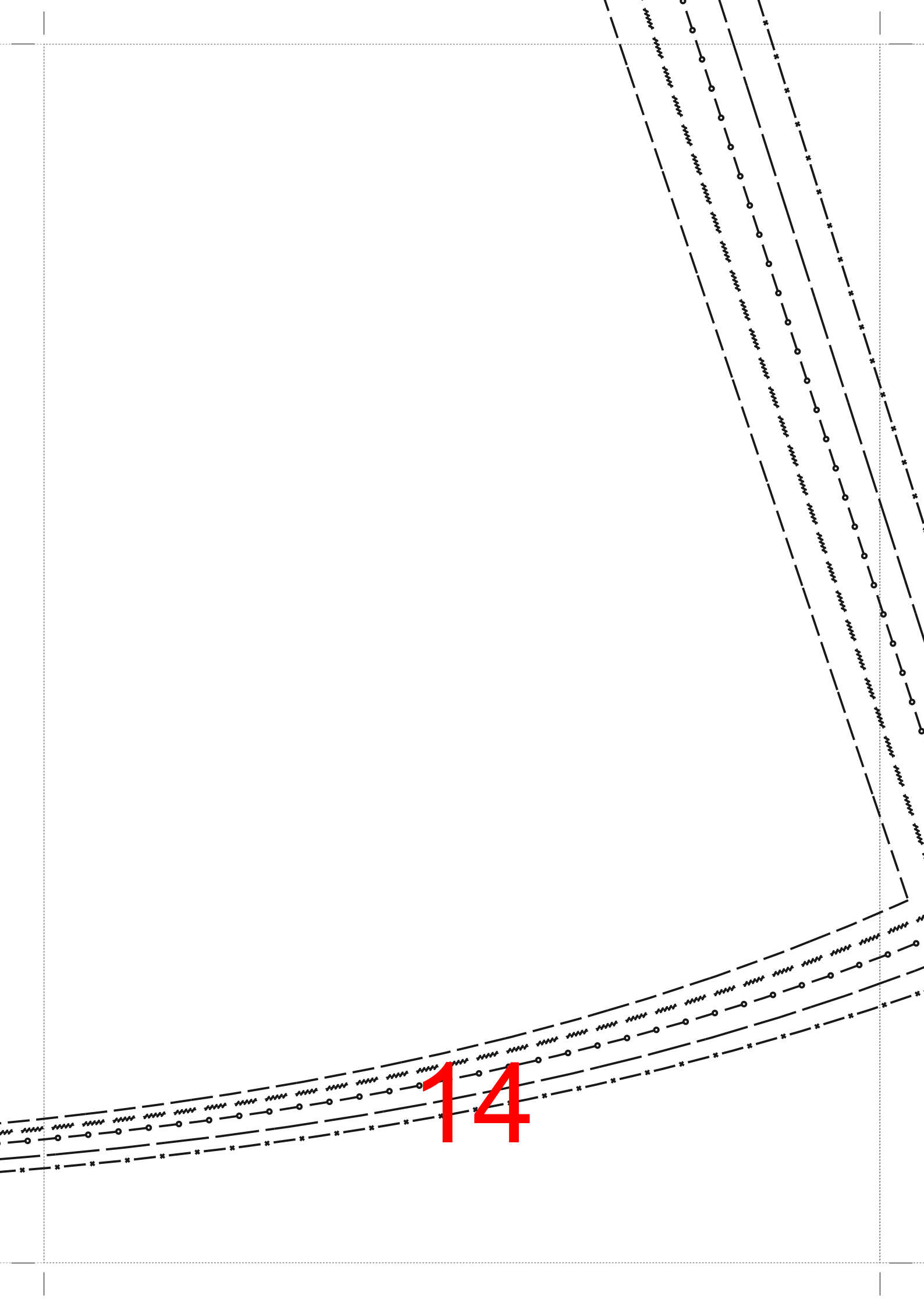


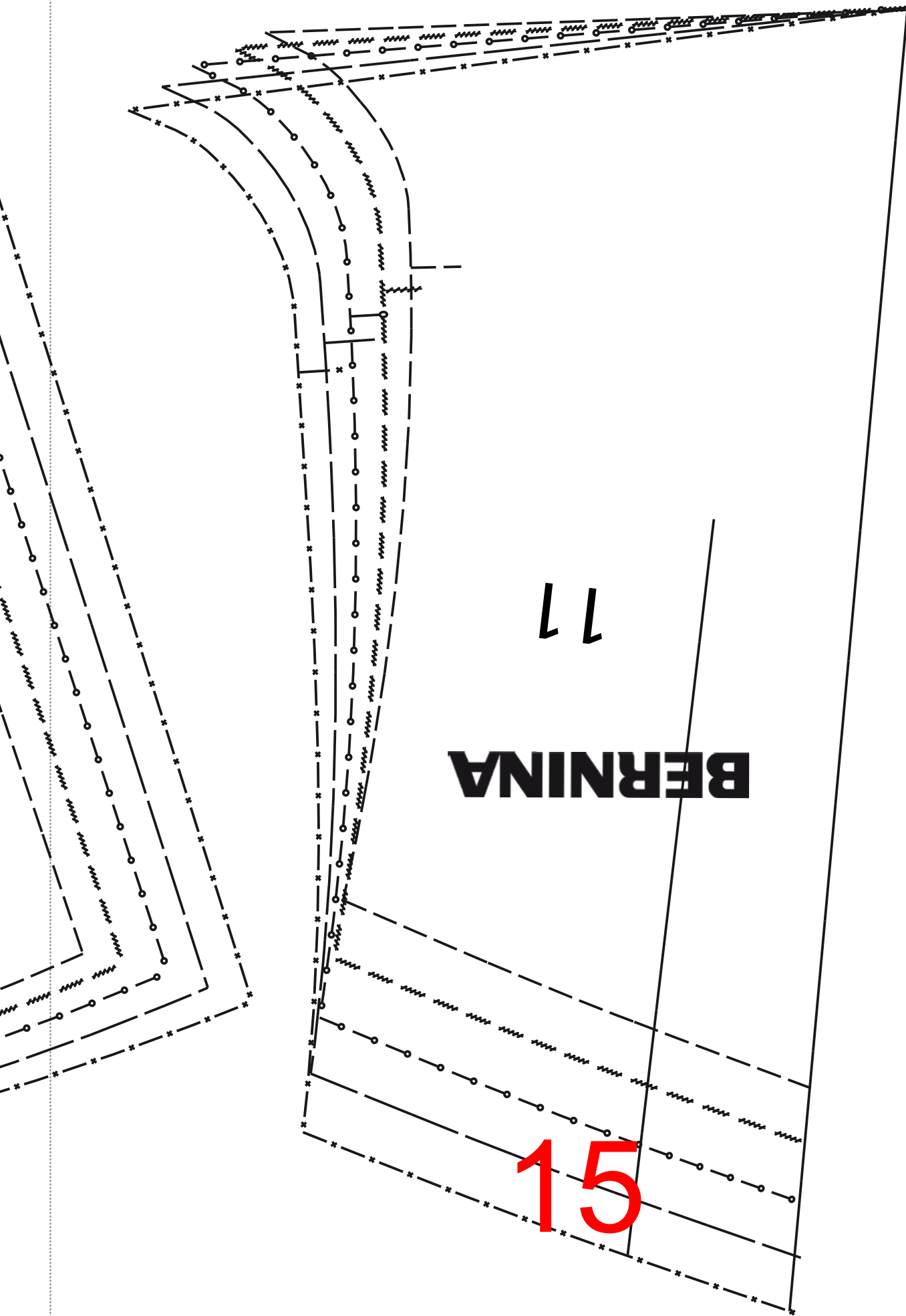
Vordere Mitte/Stoffbruch Fold/Front center Pliure du tissu/Milieu devant Midte forside/Fold Doblez/Mitad
stofvouw/middenvoor Stoffbrett/Midt foran Сгиб ткани / Передняя середина



13









BERNINA

12

16

