

Serger Project

Bold & Beautiful Placemats & Napkins

Created by Elaine Cibelli

Whether it's a picnic in the park, a tailgate party before the game, a concert on the lawn, or a dinner on your deck, these roll-up placemats keep cutlery and napkins tidy and easy to pack into your picnic tote.



Supplies for Placemats

Machine & Accessories

- BERNINA Sewing and Embroidery Machine
- Large Oval Hoop
- BERNINA Embroidery Software 6 (optional)
- Vari-Overlock Foot #2/2A
- Edgestitch Foot #10/10C/10D
- Teardrop Embroidery Foot #26
- 28 mm Bias Binder #88 with Foot #95

Embroidery Collection

- BERNINA Exclusive Embroidery Collection - Bold & Beautiful #80001

Fabric & Notions

- Kwik Sew pattern #1135 (downloadable)
- Benartex Bold & Beautiful Fabric Collection—refer to pattern for yardage requirements
- Two pieces of batting (see pattern requirements)
- 505 Temporary Spray Adhesive
- OESD Ultra Clean & Tear Stabilizer
- Isacord embroidery thread
- OESD Bobbin Thread
- Organ Embroidery needles, size 80/12 Sharp
- Two thumbtacks
- Wash-away marker

Cutting Instructions

- Cut the placemat fabric, batting, and batting according to the pattern instructions.
- Cut a lining for the cutlery pocket.
- Cut 1½"-wide bias strips for the binding and ties.

Digitize the Placemat Embroidery

Band of Flowers

- Open BERNINA Embroidery Software 6. Open a *New File*.
- Right click on the *Hoop icon* and select the *artista 255 x 145 Oval w/X-Y Lines* hoop from the drop down menu.
- Select the *Hoop Layout* tab. Select the hoop and right click two times on the *Rotate Hoop Left/Right* icon to rotate the hoop 90°.
- Select the *Embroidery Canvas* tab.
- Select *File > Insert Design*. Select design #80001-23 from the Bold & Beautiful collection.

- Left click on the *Rotate 45° CCW/CW* icon.
- Duplicate the design (*Edit > Duplicate*) three times to create a total of four designs.
- Select *Edit > Select All* and click *Align Centers (Horizontal)*. Arrange the designs so they form a continuous horizontal pattern with ends touching.

Band of Dots

- Select *File > Insert Design*. Select #80001-50.
- Left click twice on the *Rotate 45° CCW/CW* icon.
- With design selected, click the *Mirror Vertical* icon.
- Move the design below the right flower as shown.

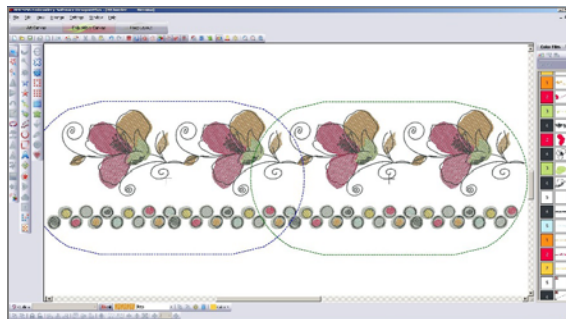


- Duplicate (*Edit > Duplicate*) the design to create a total of four designs, moving each design to the left of the preceding one.
- Hold down the *Ctrl* key on the keyboard and select all four designs. Click the *Align Centers (Horizontal)* icon. Deselect the designs.
- Select the last design on the right; click *Ungroup*.
- Select and delete the last two circle designs on the right.

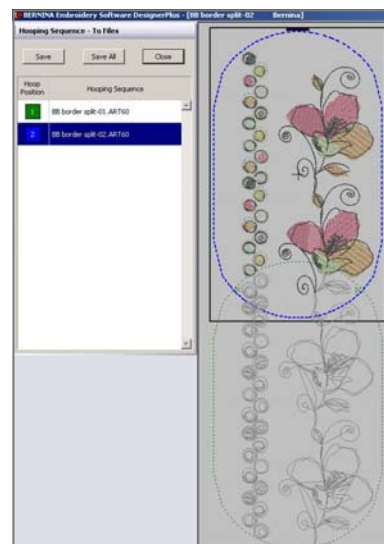
Plan the Hooping Sequence

- Select the *Hoop Layout* tab. With the hoop selected, click the *Add Hoop Up* icon.
- Move the two hoops until they cover the entire design. All parts of the design should be green.
- Select the *Embroidery Canvas* tab.
- Select *Arrange > Stitch Sequence*. Click *Yes* in the dialog box that opens.

- Select *File > Save As*. Name the file **BB Border** and save it in the location of your choice. In the dialog box that opens, click the *No* beside *Export Everything in One File*.



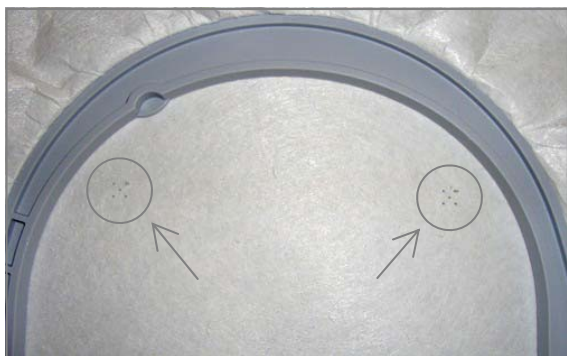
- Again *Select File > Save As*. Name this file **BB Border Split**. In the *Multi-Hoopings* dialog box that opens click *Yes—Export one file for every hooping...show me first*. In the *Hooping Sequence—To Files* box that opens, click *Save All*. Click *Close*.



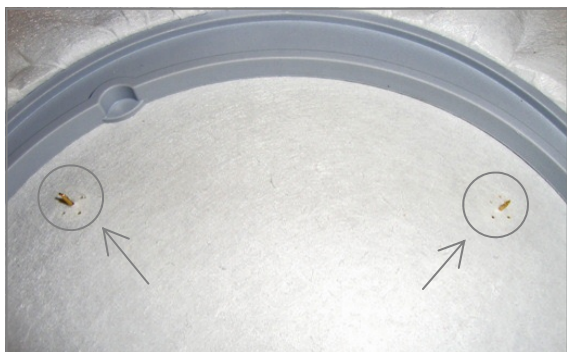
- Send the design on the screen to your embroidery machine by clicking on the *Write to Machine* icon.
- In the *Hooping Sequence—To Machine* box, the first design (**BB Border-01**) should be highlighted (dark blue). Click *Send Now*. (This will be the file that stitches first.)
- In the next box that opens, click the radio button beside either the option to save the design directly to the machine or to a USB stick for your particular machine model.
- Highlight the second file in the *Hooping Sequence—To Machine* box (**BB Border-02**). Click *Send Now*.
- In the next box that opens, again click the radio button beside either the option to save the design directly to your machine or to a USB stick for your particular model. This will be the second file to stitch.

Stitch the Placemat Embroidery

- For accurate hooping, print templates of the design combinations and use these templates as guides for proper fabric positioning in the hoop.
- Spray a piece of Ultra Clean & Tear stabilizer with 505 Temporary Adhesive and adhere it to the back of the placemat fabric. Hoop both layers together,
- Attach the hoop to the embroidery machine and open the first split file (BB Border-01).
- Stitch the entire design and the registration marks that stitch at the end.
- Mark the center of each stitched registration mark with a wash-away marker.
- Remove the fabric from the hoop and tear away the excess stabilizer, being careful not to disturb the registration marks.
- Spray and hoop a layer of Ultra Clean & Tear by itself. Bring up the second split border design (BB Border-02) and stitch the registration marks on the stabilizer.



- Remove the hoop from the machine; spray the top of the hooped stabilizer with 505 adhesive.
- From the **underside** of the hoop, place a thumb-



tack through the center of each registration mark.

- Align the stitched registration marks on the em-



broidered fabric with the thumbtack points. Gently hand press the fabric in place on the stabilizer.

- **Remove the thumbtacks.**
- Place the hoop on the embroidery machine and finish stitching the embroidery.

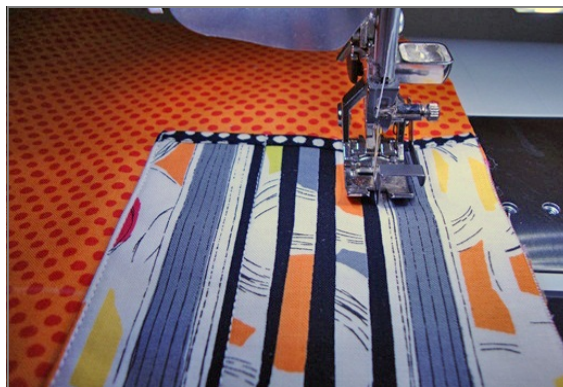
Construct the Placemat

Pockets

- Using Bias Binder #88 with Foot #95/95C, bind the top edge of each pocket.
- Using Edgestitch Foot #10/10C/10D and a needle position 2-3 steps to the side, sew the pocket edges in place. Don't sew the top shut!



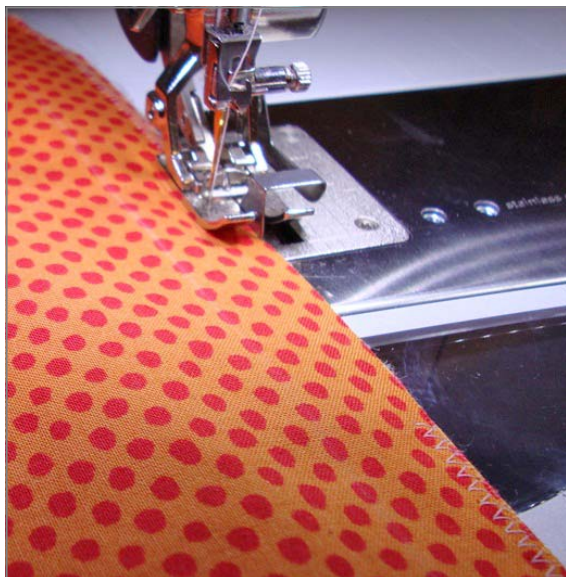
- Return the needle to center position and stitch vertical lines for the cutlery channels.



Tip: Use striped fabric for the pockets and follow the lines to stitch the channels. If not using striped fabric, mark the lines with a ruler and wash-away marker.

Binding

- Layer the backing (face down), batting, and embroidered front (face up). Adjust the needle position and zigzag around the outside edges, securing the layers together.



- Attach Bias Binder #88 and Foot #95/95C to the machine again and bind the zigzagged edges of the placemat.



Loops & Ties

- Create the loop and ties by running the strips through the binder without inserting any fabric into the fold.



- Stitch them in place using Edgestitch Foot #10/10C/10D and a needle position 2-3 steps to one side.



- Follow the pattern instructions to complete the construction of the placemat.



Supplies for Napkins

Machine & Accessories

- BERNINA/bernette serger

Fabric & Notions

- Benartex Bold & Beautiful Fabric Collection
 - One 18" square of main fabric for each napkin
 - One 18" square of contrasting fabric for each napkin
 - 505 Temporary Spray Adhesive
 - 2 cones of regular serger thread
 - 1 cone of Metro Flock (or other wooly nylon thread)
 - Fray Block seam sealant
- For each napkin, cut an 18" x 18" square of the main fabric and an 18" x 18" square of contrasting fabric.
 - Spray the wrong side of the contrast fabric square with 505 Temporary Adhesive.
 - Place the wrong side of the sprayed square to the wrong side of the main fabric square, matching the edges. Smooth the two layers together.
 - Set the serger for a three-thread rolled edge. (Consult your owner's manual for specific instructions.)
 - ◊ Thread the upper looper with Metro Flock.
 - ◊ Thread the lower looper with regular serger thread.
 - ◊ Thread the right needle with regular serger thread.
 - ◊ Remove the left needle.
 - Serge each side of the napkin, trimming a scant amount of fabric as you stitch.

- Secure the corners with Fray Block. Trim thread tails when seam sealant is dry.
- Tie the napkin in place at the side of the placemat.



Visit www.berninausa.com

Projects • Webinars • Promotions

