

## Embroidery Project

# Holiday Placemats & Napkins

Created by Bunny Gates

*It's so easy to make a beautiful holiday table setting. The elegant designs of the BERNINA Exclusive "Contour Appliqué" Collection #1104 are festive when stitched with Yenmet metallic threads, and will add a bit of sparkle to your placemats and napkins.*



## Supplies

### Machine & Accessories

- BERNINA Sewing & Embroidery Machine
- Large Oval Hoop or Jumbo Hoop
- Medium Hoop
- BERNINA Embroidery Software 6
- BERNINA CutWork Accessory
- CutWork Stitch Plate
- Echo Quilting & CutWork Foot #44
- Scanner

### Embroidery Collection

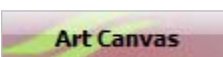
BERNINA Exclusive Embroidery Collection - Contour Appliqué #1104, designs BE110406, BE110414, BE110416, and CutWork file BE110406\_CWA

### Fabric & Notions

- Hemstitched Placemats and Dinner Napkins from [www.allaboutblanks.com](http://www.allaboutblanks.com)
- Two 4" squares of red silk for each place setting
- OESD Ultra Clean & Tear Stabilizer
- OESD HeavyWeight Tear-Away Stabilizer
- OESD Appliqué Fuse & Fix
- 505 Temporary Spray Adhesive
- Isacord Embroidery Thread, color #2101
- Yenmet Metallic Thread, colors #7002, #7004, and #7012
- Organ Embroidery needle, size 80/12 Sharp


## Create a Placemat Placement Line

Open BERNINA Embroidery Software 6 and select File > New.

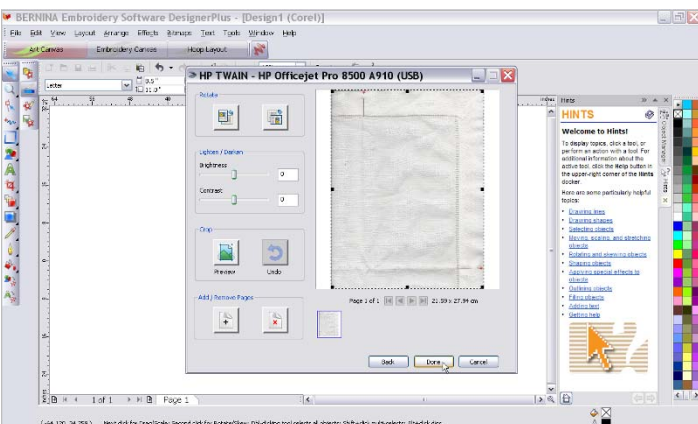
 Click on the Art Canvas tab.

Because the placemat is larger than your scanner bed, we'll scan just one quarter. Fold your placemat in quarters and mark with pins.

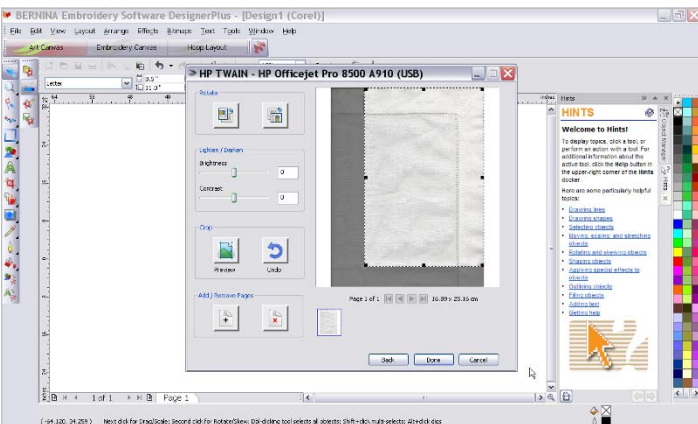
Lay one corner of the placemat on the scanner bed.

 Make sure your scanner is on and connected to your computer. Click the Scan Picture icon.

Your scanner program will open. Choose a scanning mode and resolution. Preview the image in the scanning program.




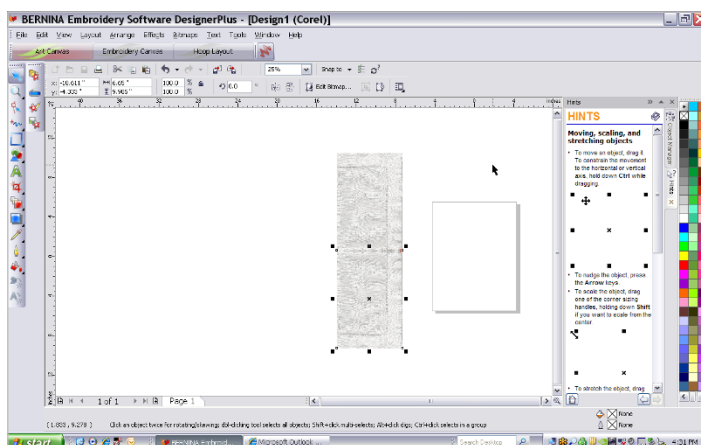
Crop the image to your quarter marks and complete the scan.





The scanned image appears in your embroidery software work space.

 With the image selected, click the Copy icon.

 Click on the Paste icon. Click on the Mirror Vertical icon. Move the copy toward the original until they are just touching.



 Click Edit > Select All, then click the Group icon.

 Click Copy, then Paste. Click on the Mirror Horizontal icon and move the copy until the two halves of the placemat are just touching.

Click Edit > Select All > Objects, then click Group. Now the placemat is the right size and shape. Type 90 degrees in the Rotate box. Press Enter.

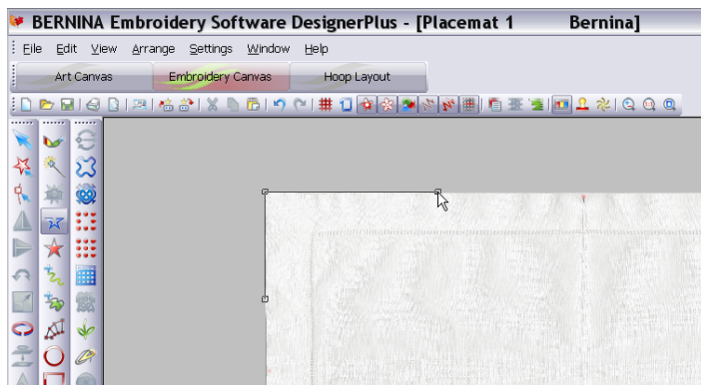
Click File > Save As. Name the file and save it where you can find it later. Save your files often!

 Click on the Embroidery Canvas tab, then click on the Open Object icon.

## Create the Placemat Corner Designs

### Upper Left Corner

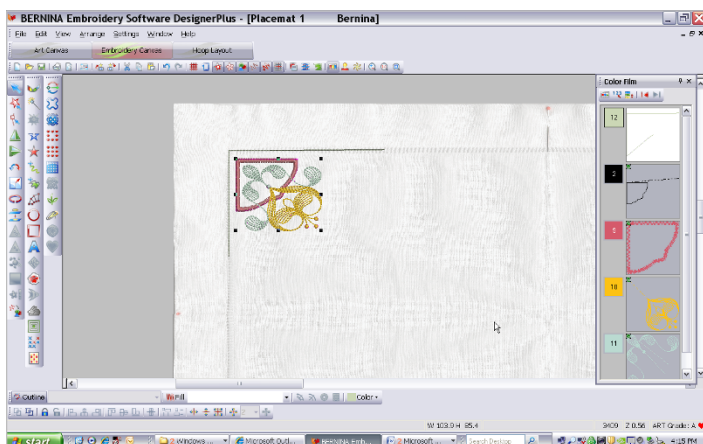
To create a placement line on the upper left corner of the hemstitching, left click about 1/3 of the way down from the corner, then on the top corner, and again about 1/3 of the way to the right of the corner.



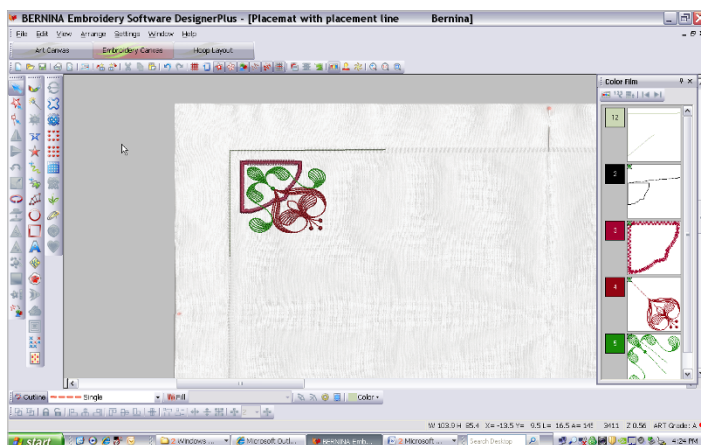


Press Enter on the keyboard to set the stitches.

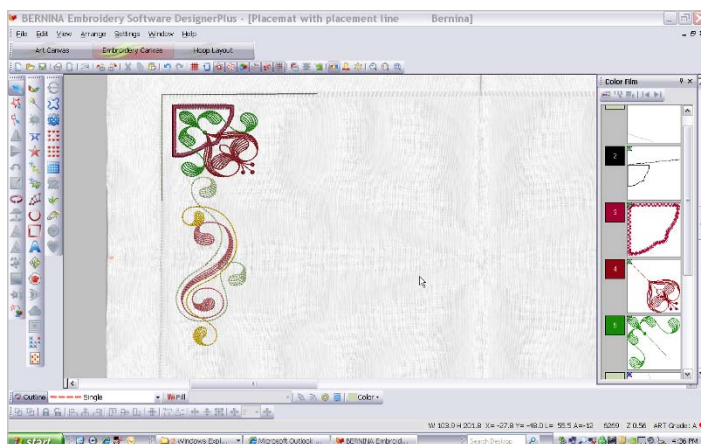
Click on File > Insert Design. Select design #BE110406 from the “Contour Applique” collection and click on Open. Move the design to the upper left corner of the placemat, just inside the hemstitching.



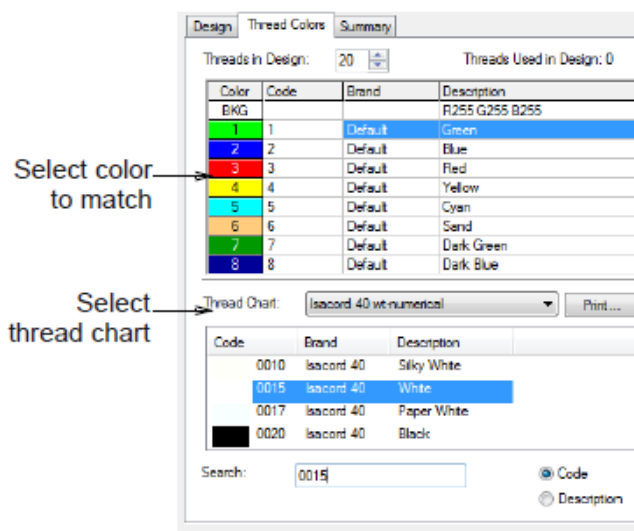
Click Apply > OK to change the colors in the design and close the Design Properties box.



Click on File > Insert Design. Select design #BE110414 and click Open. Click on the Mirror Horizontal icon. Move this design next to the hemstitching just below the corner design.



Click on the Color icon. Click on Thread Colors and the Design Properties dialog box opens.



Choose Isacord 40 wt-numerical from the Thread Chart list.

Select the third color in the Threads in Design panel. Click on color #2101 Country Red in the Thread Chart. Click on Assign. The third color in the chart is now thread color #2101 and the fourth color is highlighted.

Choose Yenmet from the Thread Chart list. Change the fourth color to #7004 and the fifth color to #7002.

Click on the Color icon. Click on Thread colors and the Design Properties box opens. Change the following colors in this design:

- Color 6—click on color #7002; click Assign
- Color 7—click on color #7004; click Assign
- Color 8—click on color #7012; click Assign

Click Apply > OK to change the colors in the design and close the Design Properties box.

Visit [www.berninausa.com](http://www.berninausa.com)

**Projects • Webinars • Promotions**

With design #BE110414 selected, click on Copy. Click on Paste. Click on the Mirror Horizontal icon. Left click two times on the Rotate 45° CW/CCW icon. Move this design to the top of the placemat, close to the corner design.



Select Edit > Select All. Click on Arrange > Stitch Sequence.

Click the Save icon.

Transfer the completed design to your embroidery machine. If the machine format is other than .EXP, you will need to delete the picture part of the placemat file before sending it to your machine.

This design will fit in one hooping if you are using the BERNINA 830 and the Jumbo Hoop. If you are using another hoop, you will need to select the Hoop Layout tab and Multi-Hoop your placemat.

### **Lower Right Corner**

Click on File > New. For this design, only a quarter of the placemat is needed for the placement guide.

Create a placement line at the lower right corner of the hemstitching, in the same manner as for the upper left corner.

Select File > Insert Design. Open design #BE110416 and place it next to the hemstitching in the lower right corner.

Change the colors to Yenmet: change Color 2 to #7012, Color 3 to #7002, and Color 4 to #7004.



Click on File > Save As. Name the file and save it where you can find it later. Don't forget to save your files often!

Transfer the design to your embroidery machine. If the machine format is other than .EXP, you may need to delete the picture of the placemat before sending the file to your machine.

### **Cut the Placemat Appliqué Shapes**

Following the instructions included in the package, adhere OESD Fuse & Fix to the wrong sides of the 4" x 4" squares of red silk fabric.

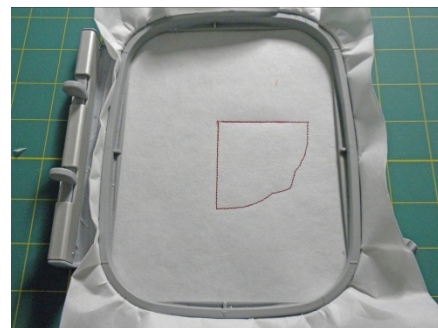
*Note: Only one appliqué piece is needed for the placemat; the other is for the napkin.*

Select design #BE110406\_CWA at your embroidery machine.

Hoop a piece of OESD HeavyWeight Tear-Away Stabilizer in the Medium Hoop.

Thread the needle and attach Echo Quilting & Cutwork Foot #44. Insert the bobbin case, threaded for embroidery.

Attach the hoop to the embroidery machine and stitch Color 1, the placement line.



Stack the two 4" squares of red silk right side up over the stitched outline. Stitch Color 2, the tack down stitches.



Color 3 on the embroidery screen will say Cut 1.

Remove the presser foot, needle, and thread from the machine. Replace the regular stitch plate with the CutWork Stitch Plate and re-attach Echo Quilting & Cutwork Foot #44. Insert the CutWork Tool with the metal frame facing you.

*Note: You may need to turn off the thread sensor when using the CutWork Tool.*



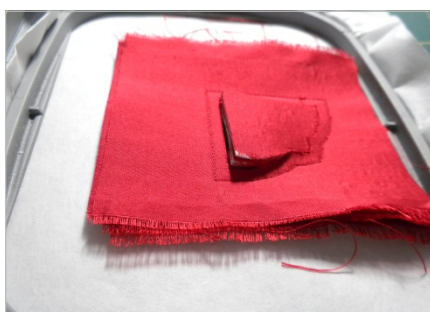
Turn the wheel on the CutWork Tool to Position 1 and press the Start button.



When the screen says Cut 2, turn the wheel on the CutWork Tool to Position 2 and resume cutting.

When the screen says Cut 3, turn the wheel to Position 3 and resume cutting.

When cutting is complete, remove the hoop from the machine and pop the cut appliqué pieces out of the stabilizer. Set aside.

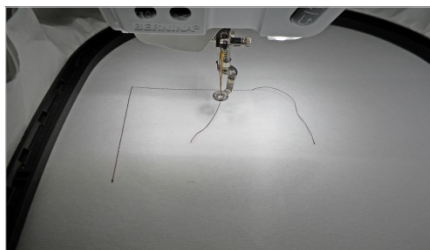


Remove the CutWork Tool and Stitch Plate and re-set your machine for embroidery.

*Note: If you turned off the thread sensor, remember to turn it on again.*

## Embroider the Placemat Designs

Hoop two pieces of OESD Ultra Clean & Tear together as one.



Stitch Color 1, the placement line.

Lightly spray the hooped stabilizer with 505 Temporary Spray Adhesive. Line up the hemstitched line with the placement line and finger press into place.



Return the hoop to the machine. Stitch Color 2, the placement lines for the appliqué shapes we set aside earlier.

Embroider the appliqué designs following the instructions included with the design collection.



Embroider the rest of the colors to complete the embroidery.

Remove the hoop from the machine and carefully tear the excess stabilizer from around the designs, one layer at a time.

Repeat the steps above to embroider the lower right corner of the placemat.

## Embroider the Napkin

The napkin embroidery is created in the same manner as the placemat embroidery, but using design #BE110406.

Create a placement line for the napkin and place design #BE110406 next to it. The appliqué shape for the napkin was already cut, at the same time as the placemat piece.

Embroider the napkin in the same manner as the placemat.



Visit [www.berninausa.com](http://www.berninausa.com)

**Projects • Webinars • Promotions**