

## Embroidery Project

# It's all about the Presentation!

## Holiday Gift Bags

Created by Catherine Gross

Start with a rectangle; add some creativity and embroidery; your gift bags will be as exciting to receive as the treasures inside! In this era of "green," these easy-to-make bags can be passed around for many holidays to come.

OESD's *Home for the Holidays* Design Collection #883 includes a variety of holiday elements including appliqué designs.. Whether your holiday style is traditional or modern, *Home for the Holidays* has 50 designs from which to select.



## Supplies

### Embroidery Designs

- OESD Home for the Holidays Collection # 883

### Fabric

- Large Tote - Pinwale Corduroy - 3/4 yd.
- Medium Tote - Cotton Twill - 1/2 yd.
- Candy Bag - Sparkle Organza - 3/8 yd.
- Wine Bottle Bag - Cotton Flannel (face) & two Cotton Prints (lining and piping) - 1/4 yd. each.
- Armo Weft Interfacing - 1/4 yd.
- Trims & Ribbons Accents - 2 yds. per bag

### Notions

- Isacord Polyester & Yenmet Metallic Embroidery Thread to compliment fabric
- Sewing Thread
- Organ Embroidery Needle size 80/10 Sharp
- 505 Temporary Spray Adhesive
- OESD Ultra Clean & Tear Stabilizer
- OESD Aqua Film Topper
- Uncovered 1/4" Welt Cording for piping accent
- Expandable Sewing Gauge
- Appliqué Scissors

### Machine & Accessories

- BERNINA Sewing & Embroidery Machine
- BERNINA Embroidery Software 6
- BERNINA Large Oval Embroidery Hoop
- Edgestitch Foot #10
- Bulky Overlock Foot #12
- Cording Foot #22

## Prepare the Fabric

### Large Tote - Peace on Earth (13" w x 14" h)

- Cut one rectangle of Bag Fabric - 14" x 31" (Sample is cotton pinwale corduroy)
- Cut twp strips of Bag Fabric for handles - 2" x 22"
- Cut two strips of Armo Weft Interfacing - 2" x 14"

### Medium Tote - Tree Ornaments (12" w x 10" h)

- Cut one rectangle of Bag Fabric-13" x 27½" (Sample is cotton twill.)
- Cut two strips of Armo Weft Interfacing - 2" x 14"

### Candy Bag- Christmas Tree (4¾" w x 9" h)

- Cut one rectangle - 6" x 24" (Sample is poly sparkle organza.)

### Wine Bottle Bag - Snowflake (12" w x 16" h)

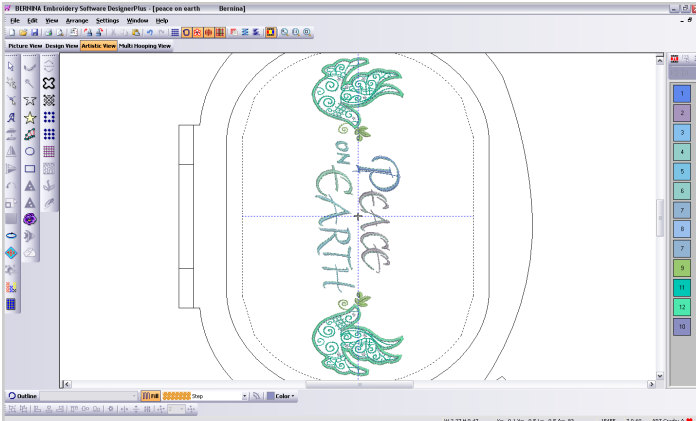
- Cut one rectangle of Bag Face Fabric - 13" x 17" (Sample is cotton flannel.)
- Cut one rectangle of Bag Lining Fabric - 13" x 17" (Sample is Bernartex Winterscapes cotton print.)
- Cut one bias strip for piping 1½" x 13."
- Uncovered 1/4" Welt Cording - 14" length

## Embroidery

### Combining Designs

*The Large Tote features two designs, combined for embroidery:*

- Open BERNINA Embroidery Software.
- Select File, Open, Design #CC88346 (Peace on Earth).
- Select File, Insert Design, Design #CC88339 (Dove). While the Dove is “selected” open Edit, Duplicate. The screen will flash.
- Choose Arrange, Mirror Horizontal.
- Click and Drag the mirrored “Dove” to the left side of “Peace on Earth.” Select the first “Dove” and Click and Drag it to the right side of “Peace on Earth”.

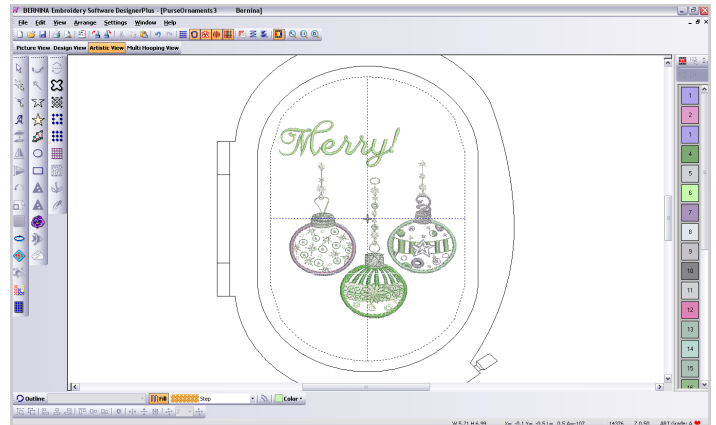


- Choose View, Show All. Edit, Select All.
- Next, click on the Align Centers (Horizontal) icon at the bottom of the screen.
- Choose Edit, Deselect All.
- Choose View, Grid to open the Options box. Click on Show Grid and change the spacing of the horizontal and vertical lines to .25.
- Select one of the “Doves” and using the keyboard arrows, adjust the placement until it is pleasing.
- Repeat this for the other “Dove.”
- Select File, Save As to save the new design.
- Select the design and use the Rotate 45 degrees icon to set the design in the hoop on the screen.
- Choose View, Show All.
- Use the sizing handles to adjust the size of the design to fit the hoop.
- Send design to machine and embroider!

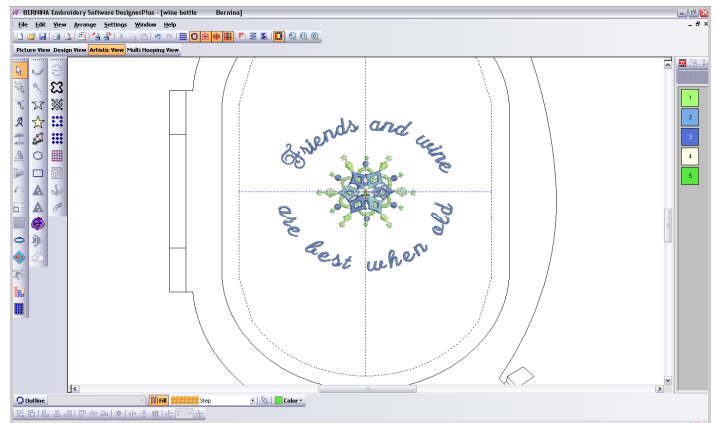
### Adding Lettering to a Design

*The Medium Tote, Candy Bag and Wine Bottle Bag each feature a design combined with lettering:*

- Open BERNINA Embroidery Software.
- Select File, Open, Select Design:  
Medium Tote - #CC88309 (Ornaments).  
Candy Bag - #CC88338 (Tree)  
Wine Bottle Bag - #CC88306 (Snowflake)

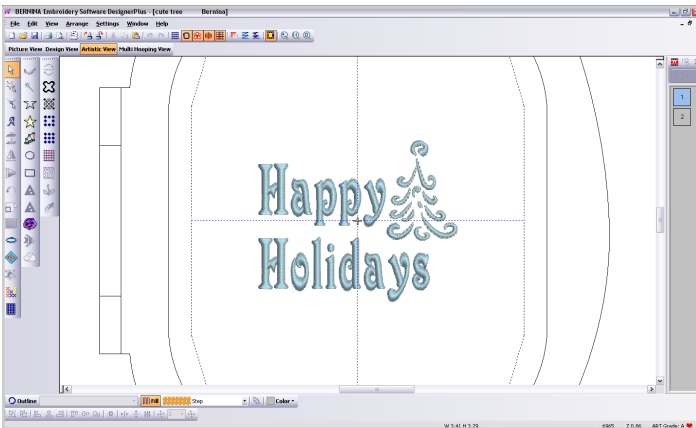


- Choose Edit, Lettering. Type wording of choice. Select Alphabet Font and Baseline. Apply, Okay.
- ⇒ *Medium Tote:* “Merry!” Eliza Font - Free Baseline
- ⇒ *Candy Bag:* “Happy Holidays” Victoria Font -Free Baseline
- ⇒ *Wine Bottle Tote:* “Friends and wine are best when old” - Eliza Font - Curved Baseline



- Click in design workspace. Click and Drag the lettering into a pleasing arrangement with the embroidery design. Using the Sizing Handles, size the lettering proportional to the design.

### Adding Lettering to a Design - continued

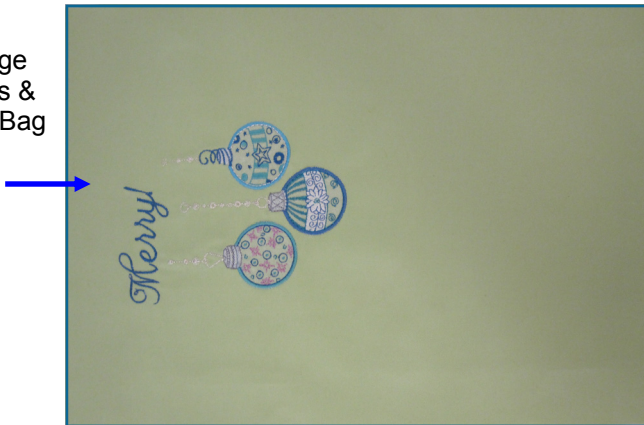


- Choose Edit, Select All.
- Choose View, Grid to open the Options box. Click on Show Grid.
- Choose View, Show All.
- Use the sizing handles to adjust the size of the design to fit the hoop.
- Select File, Save As to save the new design.
- Send design to machine and embroider!

### Embroidery Design Placement

Design Placement is personal preference. In determining design placement, allow 5" at the top edge for facings.

Top edge  
of Totes &  
Candy Bag



Use *Ultra Clean & Tear* Tear Away Stabilizer for medium weight fabrics. Use *AquaFilm Wash Away* Stabilizer for sheer fabrics like sparkle organza.

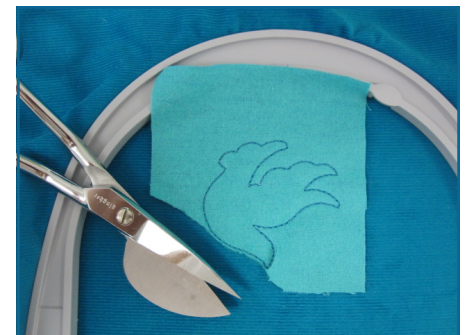
### Machine Embroidery with Appliqué

- Both the Large Tote and the Medium Tote feature embroidered appliqués. Machine embroidery makes quick work out of creating appliqués.
- For the Large Tote, the dove appliqués are cotton flannel. For the Medium Tote, the ornament appliqués are polyester sparkle organza.
- Hoop the background fabric.
- The appliqué portion of the design may stitch at the beginning, middle, or end of the entire design.
- When the design comes to the appliqué area it will stitch as follows:

- Placement  
Stitch #1  
(straight stitch)  
shows where  
the appliqué  
fabrics should  
be placed.  
Place appliqué  
fabric over this  
outlined area.



- Placement  
Stitch #2  
(straight stitch)  
holds the appliqué fabric in place.
- Remove Hoop from machine.  
DO NOT remove fabric from hoop.



- With duckbill appliqué scissors carefully trim fabric along the Straight Stitch Placement #2. Return hoop to machine.
- Tackdown Stitch (zig zag) covers the raw edges of appliqué fabric.
- Cover Stitch (satin stitch) completely covers the edge of the appliqué fabric. (Note: The Cover Stitch *may not* be sewn immediately after the tack-down stitch in some cases.)



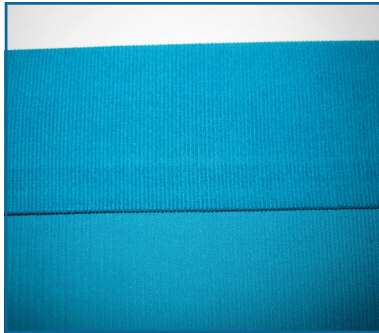


### Bag Construction

### Large & Medium Totes

The Large and Medium Totes are constructed in the same fashion.

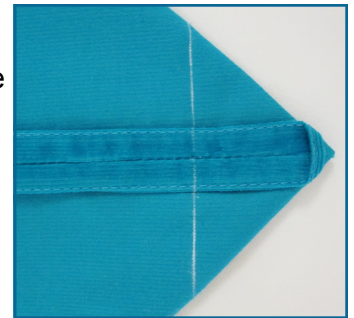
- The short ends of the fabric rectangle form the facings for the top of the tote. On these short ends, press a  $2\frac{1}{4}$ " self facing toward the wrong side of the fabric. Fuse interfacing to the back of the facing. Clean finish the edges by pressing a  $\frac{1}{4}$ " seam toward the wrong side of the fabric.



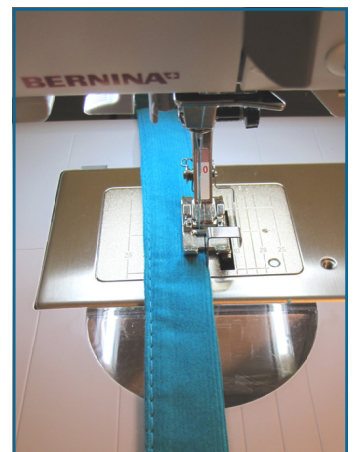
- The long ends of the fabric rectangle form the side seams of the tote. Clean finish the edges by pressing a  $\frac{1}{4}$ " seam toward the wrong side of the fabric. Using Edgestitch Foot #10, edge stitch the pressed edge on the long ends.
- With right sides together, fold the rectangle in half lengthwise. Line up side seams with the facing opened flat. Stitch the side seams together using a  $\frac{1}{2}$ " seam allowance. Press the side seams open. Re-press the facing in place.



- To form a gusset in the bottom of the bag, on each side of the bag, line up the side seam with the center bottom of the bag, forming a triangle. Determine the desired width of the bottom gusset. (The Large Tote has a 3" gusset; the Medium Tote has a 2" gusset.) Mark the desired gusset width across the triangle, dividing the width evenly on either side of the side seam. Stitch along this line.



- For a tote with self-fabric handles (as in the Large Tote), use the fabric strips pre-cut for handles. On the long edges of handle fabric, press a  $\frac{1}{4}$ " seam toward the wrong side. Apply  $\frac{1}{4}$ " Steam-a-Seam to one long edge. Press these long edges in half widthwise, lining up the folded edges. Using the Edgestitch Foot #10, edge stitch both lengthwise edges of the handles.



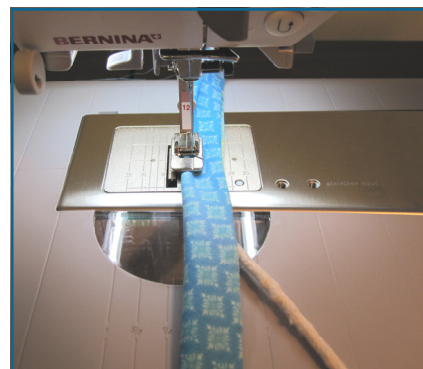
### Bag Construction - Totes, continued

- Attach the handles to the tote hem facings, spacing about five inches apart. Stitch in place, stitching only to the facings and not the tote body itself.
- Stitch the folded self-facing edge to tote body. Stitch both upper and lower edges of the facing in place using Edgestitch Foot #10.
- For decorative purposes, buttonholes are added to the totes' upper facing edges. Ribbons are woven through the buttonhole openings. On the Large Tote, colored tulle is woven through ten buttonholes, finished with a bow accent. On the Medium Tote, four buttonholes serve as a way to add ribbon handles.
- Make quick work of spacing your buttonholes with an Expanding Sewing Gauge. The gauge measures multiple equal distances for fast accurate spacing of buttonholes. Mark and sew the buttonholes using the Memory Buttonhole feature available on most BERINA models. Use Buttonhole Foot #3A.
- Cut the buttonholes open with a buttonhole cutter and wooden block.
- Finish the tote by weaving ribbon or tulle through the buttonholes.
- Enjoy!



### Bag Construction - Wine Bottle Bag

- Create two fabric tubes, one each of face fabric and the lining fabric. With right sides together, stitch each tube lengthwise using a  $\frac{1}{2}$ " seam allowance. Press seams open.
- With right sides together, stitch across the bottom edge of the face fabric using a  $\frac{1}{2}$ " seam allowance. Press seams open.
- Create piping for the bag's upper edge. Using Bulky Overlock Foot #12, cover the unfinished welt cord with the cotton print bias strip previously prepared. The groove in the bottom of Foot #12 allows the cording to ride smoothly in place. With the needle position three steps to the right of center, stitch in place creating piping with a  $\frac{1}{2}$ " lip.
- Line up the raw edges of the piping with the upper edges of the lining tube. Baste in place with a  $\frac{1}{2}$ " seam allowance.
- With right sides together, pin the upper edge of the lining to the upper edge of the face fabric. Stitch in place with a  $\frac{1}{2}$ " seam allowance. Grade and clip seam allowance.
- Turn right side out. Lightly press the upper edge.
- Finish the bottom edge of the lining by turning the  $\frac{1}{2}$ " seam edges to the wrong side of the lining. Stitch in place by machine or by hand.
- Use decorative cording as the bag closure.



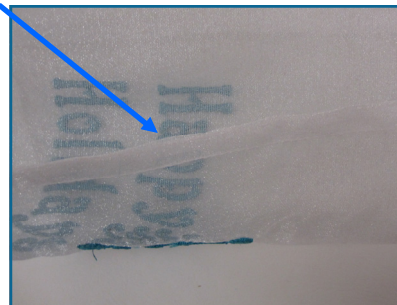


### Bag Construction - Candy Bag

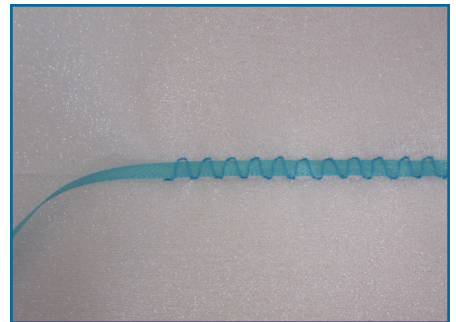
Great for  
jewelry too!



- The short ends of the fabric rectangle form the facings for the top of the bag. On these short ends, press a 2¼" hem facing toward the wrong side of the fabric. Clean finish the edges by pressing a ¼" seam toward the wrong side of the fabric.
- The long ends of the fabric rectangle form the side seams of the bag. Seams allowances on sheer fabrics like sparkle organza are best finished with French seams. With WRONG sides together, fold the rectangle in half lengthwise. Line up the side seams with the facing opened flat. Stitch together using a scant ¼" seam allowance.
- Turn the bag outside in. With RIGHT sides together, stitch the side seams again, using a 3/8" seam allowance. The side seams are now encased. Press the seams to one side. Re-press the facings in place.
- Baste bottom edge of the facing to the bag.



- Create a quick drawstring casing for narrow ribbon or cording. The casing is stitched on the outside of the bag, along the bottom edge of the facing. Using Cording Foot #22 and the Universal Stitch, (stitch width at 5.5), encase a narrow 1/8" ribbon taking care not to catch the ribbon with the stitching.
- Leave a tail of ribbon at the beginning and the end for tying.
- Enjoy!



*Visit...*

[www.bernina.com](http://www.bernina.com)

*Find additional BERNINA projects ,  
product information and promotions!*