

BERNINA
5 Series

Sensational Holiday Decor

Created by Kay Hickman

This fun project starts as a table runner, but is embellished with embroidery designs and decorative stitches from the BERNINA 580 E Sewing and Embroidery Machine! With a few folds and stitches, the table runner becomes a pillow that is sure to spice up your holiday décor. The BERNINA Exclusive Collection #21003 Sensational Swirls is the perfect collection for any holiday project.



Supplies

Machine & Accessories

- BERNINA 580 E Sewing & Embroidery Machine or other BERNINA Sewing & Machine of your choice
- BERNINA Large Oval Hoop and template
- Teardrop Embroidery Foot #26
- Buttonhole Foot #3A
- Tailor Tack Foot #7
- Edgestitch Foot #10C
- Open Embroidery Foot #20C

Embroidery Design Collection

- BERNINA Exclusive Embroidery Collection - Sensational Swirls #21003

Threads

- Isacord Embroidery Thread—colors as specified in the design collection
- Black Isacord thread
- Bobbin thread wound with black Isacord Thread

Fabric & Notions

- 1 black table runner 16" x 45" (from your local dealer or All About Blanks— www.allaboutblanks.com)
- 1 yard 2" sheer ribbon
- Three 1" diameter black buttons
- MediumWeight Black TearAway—black
- 505 Temporary Spray Adhesive
- Organ Embroidery Needles—Size 80 for embroidery
- Microtex Needles - Sizes 80 for sewing portion
- Buttonhole Cutter and Block Set (optional)
- White fabric marker
- 14" pillow form with zipper

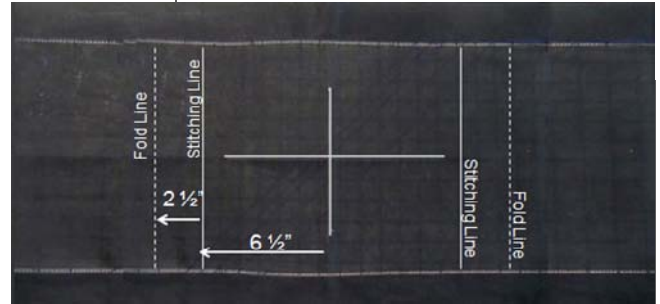


Visit bernina.com

Projects • Webinars • Promotions

Mark the table runner

- Mark the right side of the table runner as follows:
 1. horizontal and vertical center
 2. a stitching line 6 ½" to the left of center
 3. a dotted fold line 2 ½" to the left of that stitching line
 4. a stitching line 6 ½" to the right of center
 5. a dotted fold line 2 ½" to the right of that stitching line



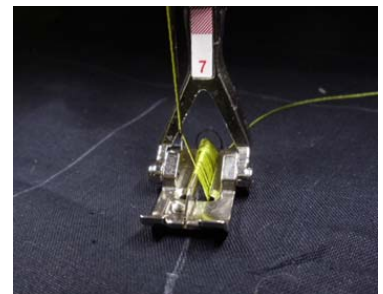
Embroider the table runner

- Cut a 15" square of Black TearAway Stabilizer and spray one side with 505 Temporary Adhesive Spray.
- Center and adhere the stabilizer to the wrong side of the runner.
- Hoop the stabilizer and fabric as one unit and attach the hoop to the machine..
- Save Designs #21003-06 and #21003-07 to a USB stick using BERNINA ArtLink or BERNINA Embroidery Software 6 and insert the USB stick into the machine.
- Use the Get New icon to select the teardrop design from the USB stick and bring it onto the screen. Change the hoop to the Oval Hoop.
- Mirror image the design Up / Down using the edit features of your machine.
- Use the Add feature on the machine to bring the ornament topper onto the screen.
- Center the ornament topper design just above the tear drop ornament.
- Add the word "JOY" to the screen and position it so that the hanger appears to be hanging off the letter "O". If desired, you may use the Letter Manipulation tools (may be called WordArt) to arc the letters. Sample photo used the 580's Guinevere font, and was rescaled proportionately to 110%, arced to 52, and spacing was set at 35.
- Center the design in the hoop on the screen of the machine. Use the machine's move feature to position the needle (design center) at the intersection of the horizontal and vertical center lines.
- Embroider the design. Remove the table runner from the hoop, but do not remove the stabilizer.



Create the Swag and Branches

- Set the machine up for conventional stitching and change to a Microtex Sharp Size 80 needle.
- Thread the needle with black Isacord thread. The bobbin can remain in the embroidery threading path.
- Mark a vertical line approximately 5" on both sides of the center. Mark a short horizontal line about 1 1/2" from the top.
- Draw a gentle curve to resemble a swag connecting the drawn lines.
- Attach the Tailor Tack Foot #7 to the machine.
- Select the zigzag stitch on the machine and change the stitch width to 5.5 and the length to .45.
- Reduce the needle tension to .5.
- Engage the Securing Function before you start stitching and stitch the left side of the swag.
 - The stitches will form over the center bar. Reduce the needle tensions even further if you see bobbin thread showing on the top side of the project.
 - Engage the Securing Function when you reach the top of the swag.
 - Raise the presser foot and slide the loops off the foot.
 - Repeat the process for the right side stitching from the top to the bottom.
 - Position the blade of the foot along the top of the first row of stitching. The left swing of the zigzag stitch will secure the previous row of stitching.
 - Finger press the loops downward toward the top of the embroidery and stitch the left side first as before. Engage the Securing Function at the beginning and end of the stitching.
- Repeat for the second side.



- Attach the Edgestitch Foot #10C to the machine.



- Select the stitch shown (Stitch #419 on the 580 machine) or a satin stitch.
- Change the width of Stitch #419 to 4.5 and move the needle position to +1 (1 click to the right).



- Engage the Securing Function at the beginning and ending of each line of stitching as you stitch up the left side and down the right side of the swag. Position the blade of the #10 foot at the top edge of the uppermost loops. This stitch will secure the second row of tailor tack stitching.

- Attach the Open Embroidery Foot #20 to the machine.



- Select Stitch #110 or another decorative stitch of your choice.
- Stitch a presser foot width above the swag. Engage the Securing Function as you stitch from the center out on each side. Engage the Securing Function as you near the end of the stitching. This will finish stitching a complete design and the machine will stop.

- The branches are now complete.



Create String of Lights

- NOTE: the following instructions use specific stitches and features that are not available on all machines. Use a decorative stitch of your choice if these features are not on your machine.

- Draw a horizontal line a half inch or so below the ornament and parallel to the bottom of the table runner. Start the line 5 1/4" to the right of the center line and end 5 1/4" to the left of the center line.



- Select the Combi-Mode on the machine.



- Select Decorative Stitch #770 and it will appear on the screen.

- Touch the Stitch Length field on the screen of the BERNINA 580 machine and change the length of the stitch pattern to 8.2.

- Add Stitch #770 two more times and shorten the Stitch Pattern Length to 8.2.



- Add Decorative Stitch #307.
 - Mirror image the stitch left / right.
 - Change the width of the stitch to 5.5.
 - Change the pattern length to 5.8.
 - Move the needle position to the far right (5).





- Select Editing the Complete Combination icon.



- Touch the Pattern Repeat Icon until it shows 9 / 9.

- The number in the Stitch Length field now shows the length of the entire combination of designs. Multiply that number by 9 (the number of repeats chosen) to determine how long the combined designs will be. In this case that figure is 274mm which is perfect for the 10 3/4" that that is marked.

- Position the cursor on the last stitch of the combination in the Editing field. The machine will stitch this stitch first before it begins stitching the combinations. This will place Stitch #307 at the beginning and the end of the string which will give it a symmetrical look.

- Position the table runner under the needle. The embroidered designs should be to the left of the needle. Stitch along the line. The machine will stop when the 9 pattern repeats have stitched. TIP: You may wish to use the Start / Stop button to stitch the string. The machine will stop when it has finished the correct number of combinations.



- Change back to the Single Stitch mode on the machine and select Stitch #407.



- Select Pattern Repeat and change it to 1 / 1.

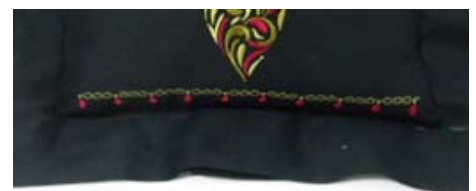
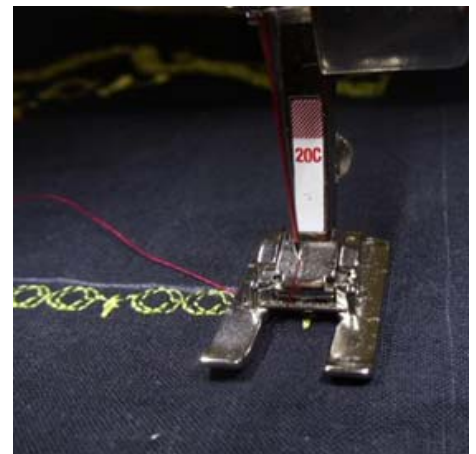


- To make the stitch appear more bulb-like, decrease Pattern Extend to 80, and change the Stitch Density to .25.

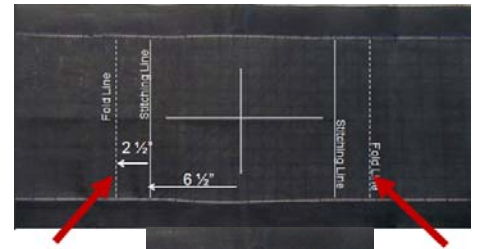
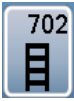


- Center the presser foot over the tip of the first hanger (Stitch #307). Engage the Securing Function and begin stitching the bulb. Before the machine finishes the design, engage the Securing Function again and the machine will tie off the threads.

- Repeat the process to stitch a total of 10 bulbs.



- Carefully remove the stabilizer from the back of the project.
- Press the ends of the table runner to the wrong side along both Fold Lines.
- Select Stitch #702 and stitch along the marked Stitching Lines from the top hemstitching to the bottom hemstitching.



- Fold the two ends of the table runner to the wrong side just past the hemstitching.
- Edgestitch with a straight stitch along the inner edge using Edgestitch Foot #10 foot and moving the needle position to +2 (2 clicks to the right).



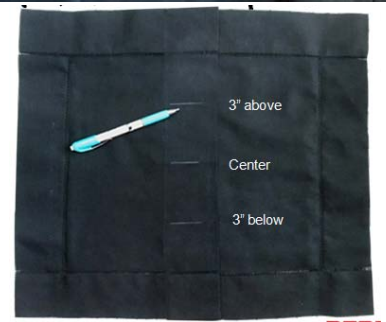
- Mark a line for a buttonhole at the center back, 3" above center, and 3" below center.



- Select buttonhole #51. Adjust the length to 29 / 27. Change the Slit Width to 1.8. This will give more room for the button to fit inside the buttonhole.



- Place the slider at the half-way point on the Buttonhole Foot #3A.
- Position the foot parallel to the fold so that the slider is aligned with each horizontal marking. Stitch a vertical buttonhole at each marking. *TIP: Use the Start / Stop button for buttonholes. The machine will stop when the buttonhole has completely stitched.*



- Mark the placement for each button on the opposite end.



- Attach Foot #18, select the Button Sew-On Program (Stitch #60) and lower the Feed Dogs.



- Place the button in position on the fabric and position the foot so that the center metal toe is centered between the front two holes in the button. Check to make sure that the width of the stitch matches the width of the holes in the button.



- Stitch the button keeping your foot pressed on the foot control until the machine stops.

- Cut the buttonholes open using a buttonhole cutter and wooden block.

- Button the back and flip the pillow right side up.
- Pin through all layers along the hemstitching line at the top and at the bottom of the pillow.



- Select a straight stitch and attach Edgestitch Foot #10C.
- Stitch the top and the bottom along the hemstitching. Start and stop stitching where the vertical side seams meet the hemstitching..



- Tie the sheer ribbon into a bow and pin from the inside of the pillow.
- Insert the 14" pillow form with zipper into the back of the pillow. You will need to unzip the form and remove a portion of the stuffing before inserting it..
- Your pillow is now ready to enhance your holiday décor!



Visit your local BERNINA Dealer
 for a variety of
BERNINA Exclusive Embroidery Collections