

Embroidery Project

eReader Tablet Cover

Created by Elva Mungai

Create an easy-to-stitch, custom-fit cover for an eReader or other electronic device. Embellish it with designs from the BERNINA Exclusive Embroidery Collection - Sepia Petals for a stylish, professional look.

Plan your design layout using BERNINA Embroidery Software 6 and use the Multi-Hooping instructions to easily stitch the designs in a variety of hoop sizes!



Supplies

Machine & Accessories

- BERNINA Sewing & Embroidery Machine
- Mega Hoop or Jumbo Hoop (or largest embroidery hoop available)
- BERNINA Embroidery Software 6 (optional)
- Overlock Foot #2/2A
- Edgestitch Foot #10/10C/10D
- Teardrop Embroidery Foot #26
- Patchwork Foot 37/37D OR Patchwork Foot with Guide #57/57D
- Piping Foot #38

Embroidery Collection

- BERNINA Exclusive Embroidery Collection - Sepia Petals #12002

Fabric & Notions

- 12" x 22" rectangle of synthetic suede, synthetic leather, or heavy fabric such as denim or canvas
- 12" x 22" rectangle of OESD Soft and Stable stabilizer
- 12" x 22" rectangle of cotton fabric for lining (sample is from the Benartex "Bold and Beautiful collection")
- OESD Ultra Clean & Tear Stabilizer
- 505 Temporary Spray Adhesive
- Isacord embroidery thread
- Bobbin thread
- Two alligator clips
- 2" length of 1/2"-wide hook-and-loop tape
- Size 90/14 S (Sharp) Organ Embroidery needles
- Size 90/14 Microtex needle for construction.

Software Icons Used in This Lesson

New	Rotate 45° CCW/CW	Hoop Layout
Art Canvas	Scale by 20% Down/Up	Show Hoop
Object Shape Tools	Group	Add Hoop
Embroidery Canvas	Mirror Horizontal	Calculate Hoopings
Zoom	Mirror Vertical	Write to Machine

Cutting Instructions

- Decide on the orientation of the tablet as it will fit into the cover. Then measure the size of the table, including length, width, and thickness.
- The width of the pattern rectangle = the width of the tablet + the thickness of the tablet + 2".
- The length of the pattern rectangle = the length of the table + the thickness of the tablet, times 2, plus an additional 6" for the flap.
- Add at least ½" to the width and height measurements for seam allowances.

Note: The tablet used for the sample project was placed horizontally, with a width of 9½" and length of 7½"; it measures ⅜" thick.

Using the instructions above:

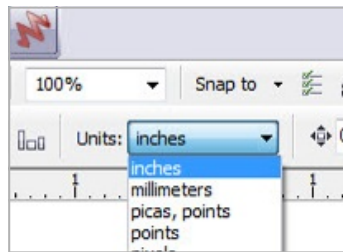
Pattern Width = 9½" + ⅜" + 2" = 11⅞"

Pattern Length = 7½" + ⅜" = 7⅞", times 2 = 15¾", plus 6" = 21¾"

Therefore, the pattern rectangle must be at least 11⅞" x 21¾". The pattern created in the embroidery software is 12" x 22".

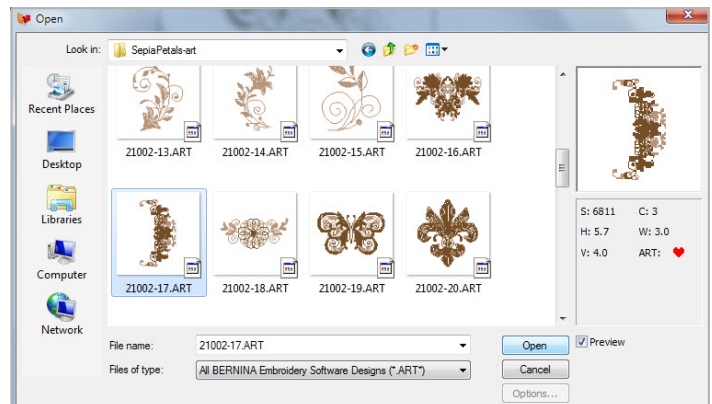
Design Layout

- *Open* BERNINA DesignerPlus Embroidery Software 6 or select *File > New* if your software is already open.
- Click on the *Art Canvas* tab.
- Change the measurements system to inches in the *Units* field.
- Select the *Vector Rectangle* tool. Click and drag a rectangle on the screen.
- With the rectangle selected, change the size to 12" (x axis) by 22" (y axis). This rectangle will be a template for planning the design grouping, but will not be stitched.
- Click on the *Embroidery Canvas* tab. This is where the embroidery designs will be added to fit within the rectangle.



Hints:

- ◇ *Zoom in and out using the wheel on your mouse or by clicking on the Zoom Box icon.*
- ◇ *Use File > Insert Design to add each design to the template and to manipulate and arrange designs to fill the space.*
- ◇ *Click Settings > Options > Hoop and click the radio dial next to Manual. This is needed so the designs can be placed within the template as desired without the hoop moving.*
- ◇ *Leave about 70 mm (2¾") of space around the outside edges of your design to allow for a border and seam allowances.*
- Click *File > Insert Design* and select design #21001-17 from the Sepia Petals collection. Click *Open*.



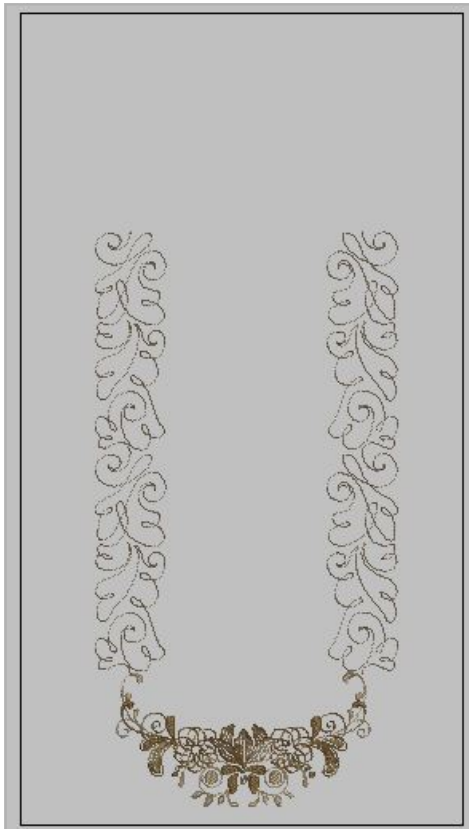
- With the design selected, right click twice on the *Rotate 45° CCW/CW* icon to rotate the design clockwise so the curved end of the design is toward the bottom.
- With the design still selected, right click on the *Scale by 20% Up/Down* tool to increase the size of the design by 20%.
- Move the design to the approximate vertical center of the rectangle and close to the bottom.
- Select *File > insert Design* and select design #21002-42. Click *Open*.
- With the design selected, select *Edit > Copy*, then select *Edit > Paste*. Use the up arrow key on the computer keyboard to move the duplicated design above the original.

- *Zoom* in closely to see that the ends of the stitches meet.
- Hold the CTRL key on the keyboard as you select both designs. Select *Arrange > Group* or click the *Group* icon in the lower left corner of the screen.

- Move the grouped design to the left and down so the bottom center just touches, but does not overlap, the first design (#21001-17) placed at the bottom of the screen.



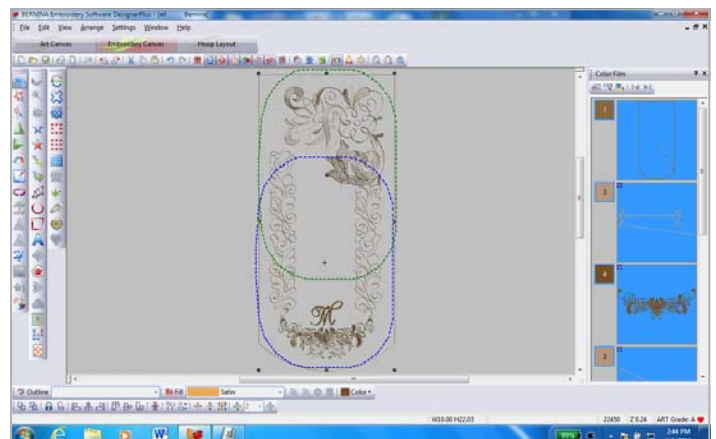
- With the grouped design still selected, select *Edit > Copy*, then *Edit > Paste*. Click the *Mirror Horizontal* icon and move the duplicated design to the right using the right arrow key on the keyboard, stopping when it is positioned above the right tip of the first design.



- Hold the CTRL key on the keyboard as you select both vertical design groups. Click on the *Align Centers Horizontal* icon.
- Select *File > Insert Design* and select design #21002-28. With the design selected, click on the *Mirror Vertical* tool.
- With the design still selected, drag one corner of the design to enlarge it to 220%.
- Place the design so it slightly overlaps the vertical design on the right.
- The design is now complete. If desired, a monogram or name may be added to the center of the flap design, keeping the total height of the tallest letter under 43 mm.

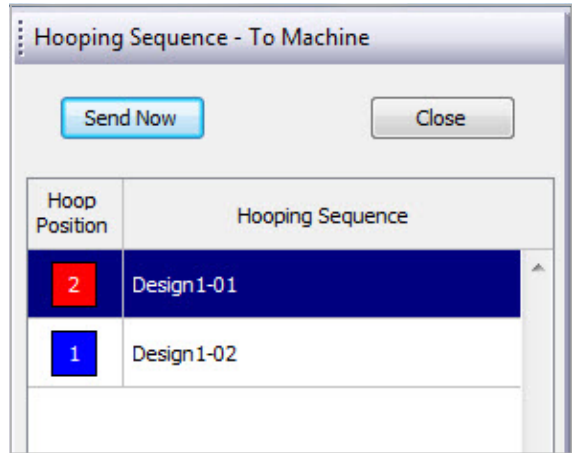
Multi-Hooping (DesignerPlus Only)

- Right click on the *Show Hoop* icon. Select the largest hoop you have for your machine. If you have a Jumbo Hoop or Mega Hoop, you will be able to stitch this large design out in fewer hoopings.
- Place a check in the box next to *Display Hoops* and click *OK*.
- Select the *Hoop Layout* tab.
- If using a Jumbo Hoop, move the hoop so it covers the upper half of the design. With the hoop selected, click the *Add Hoop* icon. Position this second hoop so it overlaps the previous hoop, the entire design is covered, and all parts are green.
- If you are using a Mega Hoop or Large Oval Hoop, add additional hoops as needed to cover the design, overlapping hoops.



- Click the *Calculate Hoopings* icon. A message box will appear, telling you how many hoopings will be needed to stitch the complete design. (Two hoopings for the Jumbo Hoop, four hoopings for the Mega Hoop). Click *OK*.
- Registration marks are automatically added to each hooping, making it easy to re-hoop each section.
- Select *File > Save As*. Navigate to the folder where you want to store the design and name this file **e-reader whole**. To save the entire design as one unit, click the *No* button next to *Export everything in one file*.
- Select *File > Save As* again, but this time name the file **e-reader Multi-Hoop files**. In the *Multiple Hoopings* box that opens, click the *Yes* button beside *Export one file for every hooping (show me first...)*.

- To send the designs to the embroidery machine, select the *Write to Machine* icon.
- The design portion ending in -01 will be highlighted. Click *Send Now*.



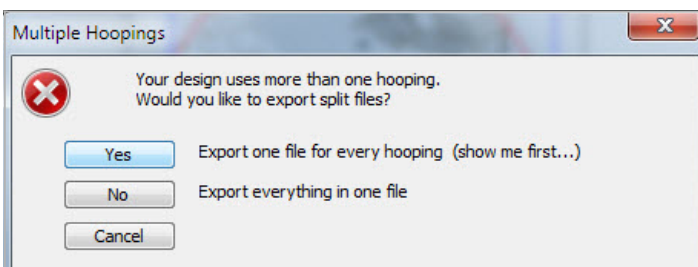
- In the *Bernina Selection Device* box that opens, select your machine (for direct connect) or the USB stick for your machine. The software will automatically save the designs in the correct format for the machine. Click *OK*. Then click the download selected design to the embroidery system button and click *OK*.

- Select the second design (ending in -02) and repeat the process.

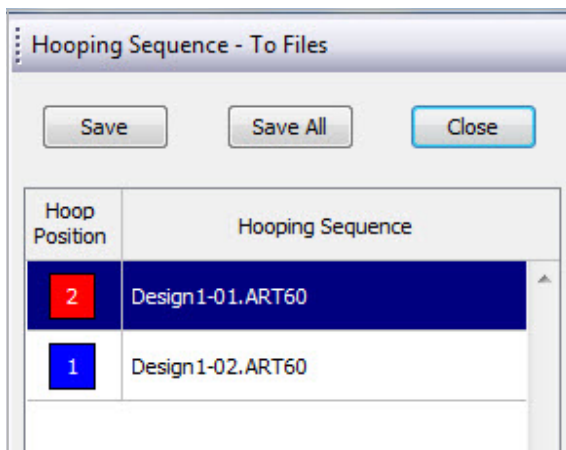
- For hoops smaller than the Jumbo Hoop, repeat the process for additional hoopings.

Embroidery

- Hoop one piece of Ultra Clean & Tear stabilizer alone in the hoop.
- Spray the top of the 12" x 22" piece of Soft & Stable with a light application of 505 Temporary Adhesive Spray and adhere the wrong side of the 12" x 22" piece of synthetic suede, synthetic leather, or durable fabric with the wrong side over the Soft & Stable.
- Spray the hooped stabilizer with additional 505 adhesive.
- If using a Jumbo Hoop, align the long edge of the fabric / Soft & Stable unit, with the fabric right side up, to the right edge of the Jumbo Hoop. Align the bottom of the fabric with the bottom end of the hoop.



- The *Hooping Sequence - To Machine* box will be displayed. Clicking on the different files under *Hooping Sequence* will show each section separately. Select *Save All* to save the selections if you are happy with the results displayed.





- If you are using a smaller hoop size, use a paper template to place the designs where you want to stitch them on the fabric and hoop accordingly.
- Load the multi-hoop design that will stitch on the flap and a portion of the back section into the embroidery machine.
- Stitch this section of the design and finish by stitching the two registration marks (the last color). These were automatically placed in the design by the Multi-Hooping feature of the BERNINA Embroidery Software 6.
- Remove the hoop from the machine and carefully remove the stabilizer around the edges of the design, being careful not to remove the registration mark stitches.

Tip: Trace over the registration marks before removing the stabilizer, just in case the stitches are accidentally removed.

- Hoop a second piece of Ultra Clean & Tear stabilizer and return the hoop to the machine.
- Load the remaining section of the design.

Note: When the second section is loaded into the machine, it may appear on the machine screen with a red line indicating that it doesn't fit into the hoop. If this should happen, select the Move Motif icon on the screen and slightly move the design until the hoop outline changes from red to black. This will not cause a problem with the design and the placement of the registration marks will not change.

- Stitch the first color—the two registration marks.
- Remove the hoop from the machine and spray the hooped stabilizer with 505.
- Place a straight pin through the center of each registration mark stitched with the first section of the design. Align them with the centers of the registrations marks just stitched on the stabilizer.
- Smooth the fabric / Soft & Stable unit to the hooped stabilizer and return the hoop to the machine.



Tip: On the BERNINA 830 or B 580, check the design using Absolute Check to see if the first stitch of the design will stitch in the proper place.

- Stitch the rest of the design to complete the table cover.
- Remove the fabric and stabilizer from the hoop. Gently tear away as much stabilizer as can easily be removed.

Visit www.bernausa.com

Projects • Webinars • Promotions

Construction

- Trim the edges of the tablet cover so it measures 11" x 20". Round the bottom edge.

Tip: Use the Jumbo Hoop template as a guide.

- Cut the 11" x 20" lining piece to the same size and shape as the tablet cover.
- Cut a 2" long piece of ½"-wide hook-and-loop tape.
- Find the center of the lining piece along the short curved edge, measure down 1" from the cut edge, and stitch the hook side of the hook-and-loop tape



in place using Piping Foot #38. The bulk of the tape fits nicely under the cut-out sole of this foot.

- Find the center of the straight edge of the embroidered tablet cover, measure down 2", and stitch the hoop side of the hook-and-loop tape in place, stitching through all layers.
- Spray the wrong side of the embroidered fabric with 505 adhesive and adhere it to the wrong side of the lining fabric, matching the curves and edges of the lining to the cover.

Tip: If using a fabric that cannot be pinned in place without making permanent holes, use alligator clips to hold the lining and cover together.

- Edgestitching around the outer edge using a 5 mm straight stitch and Patchwork Foot #37/37D or Patchwork Foot with Guide #57/57D. This stitching will hold the edges together and make them easier

to bind later.

- Check the instructions included with Binder #88 to determine the width of the strips required by your binder. Starch the binding fabric prior to cutting the binding strips.

Tip: The size of the binder is imprinted on the flat part of the binder. The sample uses the 32 mm



version of Binder #88.

- Cut enough bias strips to cover the entire outer edge of the cover plus a few extra inches. Join the strips together with diagonal seams.
- Insert one end of the long bias strip into the scroll



- of the binder and begin binding at the 90° corner.
- Bind along one side, around the curved edge flap, and down the second straight side. Stop when the short straight end of the cover is reached. Cut the binding strip close to the corner of the cover.

- Using a second piece of bias binding, insert the binding into the binder and stitch a 1" length of binding before inserting the last cut edge of the tablet cover.
- Insert the cover and stitch binding across the entire short straight edge. Stitch off the end and continue stitching for about 1" before stopping.
- Place the tablet cover wrong side up on a flat surface with the curved edge at the top.
- Measure up 7" from the lower corners and fold the short straight edge of the cover up at this mark. This forms the pocket to hold the tablet.
- Tuck the 1" binding tails at the top edge to the inside of the cover.

- Match the side edges of the binding and hold them together with alligator clips.
- Using Edgestitch Foot #10/10C/10D with the needle position moved to the far left, stitch from the bound edge to the bottom of the tablet cover.
- Move the needle to the far right and stitch down the second side of the cover, again using alligator clips to hold the layers in place.

