


**Embroidery
Software 6**

Stitch 'n' Bloom Welcome Spring Banner

Created by Lisa Klingbeil

Inspired by a cross stitch band sampler, this delightful banner uses fresh colors and contemporary hand-look embroidery designs to welcome spring to your home in modern style. The embroidery designs in the BERNINA Exclusive Stitch 'n' Bloom Embroidery Collection come in three colorways, providing the right decorative choice for any décor style.



Supplies

Machine & Accessories

- BERNINA Sewing & Embroidery Machine
- Large Oval Hoop
- BERNINA Embroidery Software 6
- Teardrop Embroidery Foot #26
- Braiding Foot #21/12C
- Walking Foot #50 with Center Guide
- Patchwork Foot with Guide #57/57D

Embroidery Collection

- BERNINA Exclusive Stitch 'n' Bloom Collection #21000
 - ◊ Designs #21000-02, 04, 05, 11, 12, 13, 14, 15, and 18

Fabric & Notions

- Summer Carnivale Silk Collection by Brewer
- 1¼ yard white silk dupioni (substitute similar color cotton or polyester if silk is not available)
- 15" x 27" piece of low-loft batting
- 505 Temporary Spray Adhesive
- OESD Ultra Clean & Tear Stabilizer
- Isecord embroidery thread; colors #0345, 0352, 3815, 4122, 4240
- OESD Bobbin Thread
- Thread for piecing
- YLI Clear Nylon Monofilament
 - Oliver Twist One-Offs Hand-dyed Variegated Hank of decorative fibers; colorways #50, 54, and 5
 - Organ Embroidery needles, size #80/12 Sharp
 - Rotary cutting equipment



Finished size: approximately 13" x 25"

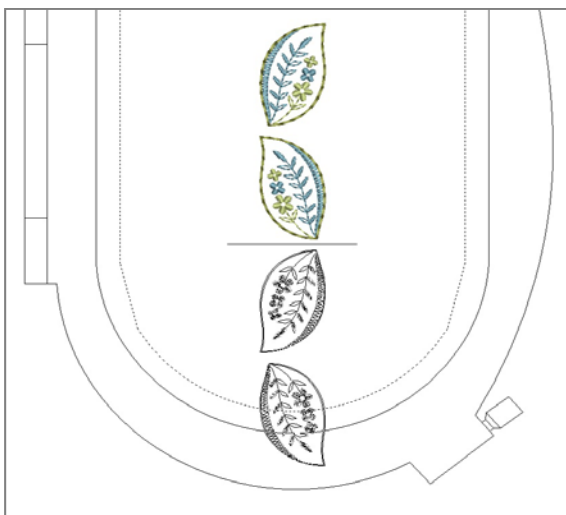
Note: The embroidery on each design panel is roughly 8½" wide.

Prepare the Embroidery Design Files

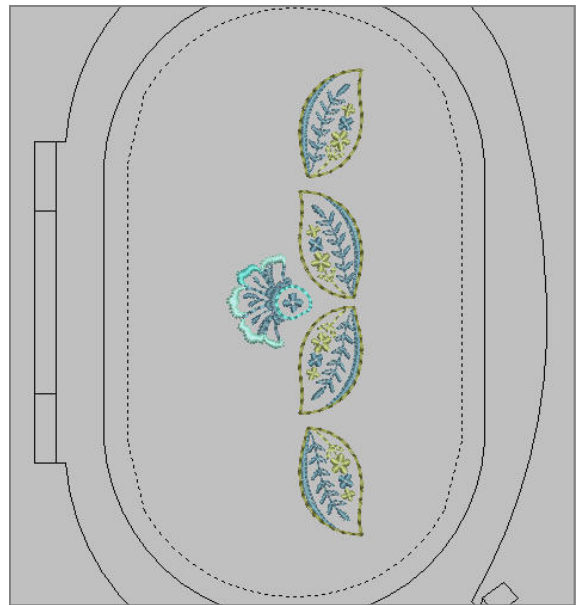
- Open BERNINA Embroidery Software V6 and open a *New* file.
- Click on *Settings > Options*. On the *General* tab, make sure that *Group Designs on Open and Insert* is checked, click *OK*.

Panels 1 and 6

- Open BERNINA Embroidery Software 6 and select *File > New*.
- Click on the *Embroidery Canvas* tab.
- Right-click the *Show Hoop* icon and choose artista 255 x 145 Oval for the hoop; click *OK*.
- Click on *File > Insert Design*. Select design #21000-05 Floral Leaf 2 from the “Stitch ‘n’ Bloom” collection and click *Open*.
- Left-click once on the *Rotate 45% CCW / CW* icon.
- Left-click once on *Scale by 20% Down / Up*.
- Select *Edit > Duplicate*, and move the one of the motifs above the other.
- Click the *Mirror Horizontal* icon.
- Adjust spacing between the leaves to about ¼”.
- Select *Edit > Select All* and then click the *Align Centers Vertical* icon.
- With both leaves still selected, click on *Mirror Merge Vertical*.



- Select *File > Insert Design*, select design #21000-15 Mini Flower, and click *Open*.
- Double-click the Mini Flower design. In the Object Properties dialog box that opens, click on the *General* tab.
- Type “110” in the *Rotate* field and click *OK*.
- Drag the flower to its final position, nestled between the two center leaves.

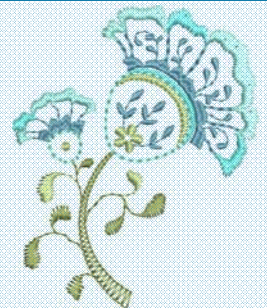


- Click *File > Select All*.
- In the panel above the *Color Film*, click the *Sequence by Color* icon, and click *OK*.
- Click *File > Save As*. Navigate to the location you would like to save the file, and name the file *Panel_1.ART60*.

Note: This panel will be embroidered twice. When the project is sewn together, the panel will be positioned so the top of the Mini Flower will point to the top and bottom sides of the banner.

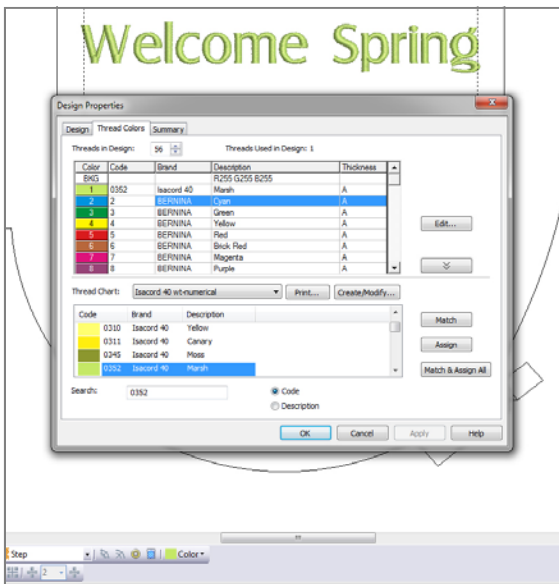
Visit
www.berninausa.com

- **Projects**
- **Webinars**
- **Promotions**



Panel 2

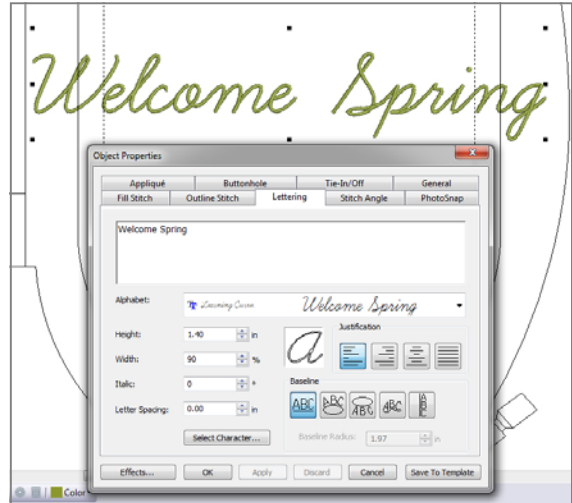
- Select *File > New*.
- Click on *Lettering / Fill Values* icon.
- Click on the screen and type *Welcome Spring*. Then press *Enter* on the keyboard.
- With the lettering still selected, click the *Color Bar > Thread Colors*.
- Click the drop down arrow in the *Thread Chart* box and choose *Isacord 40 wt-numerical*.
- In the *Search* box, type *0352* and click *Assign*.
- Click *Apply* (you may need to move the *Design Properties* box to see the change on-screen), then click *OK*.



- Double-click the lettering on the screen to open the *Object Properties* dialog box.
- Use the drop down arrow in the *Alphabet* and choose the True Type font called *Learning Curve*.

Note: BERNINA Designer Plus Embroidery Software is able to translate True Type fonts into stitches. A True Type font is any font that is installed on your computer. If the Learning Curve font is not on your computer, use another font of your choice. Depending on the font you choose, you may have different Height and Width settings (see next step), but the goal is that the lettering is roughly 8" to 8½" (203mm to 216mm) wide.

- Change *Height* field to 1.40" (36mm) and the *Width* field to 90%.
- Click *Apply*, click *OK*.



- Left-click twice on the *Rotate motif 45% CCW / CW* icon.

NOTE: You can tweak the lettering further by clicking the design once, then dragging one of the black corner handles until you have the desired size.

- Click *File > Save As* and navigate to the folder of your choice. Name the file *Panel_2.ART60*.

Panel 3

- Select *File > New*.
- Click on *File > Insert Design*, and select #21000-02 *Floral Bird*. Click *Open*.
- Double-click on the design to open the *Object Properties* box.
- Click on the *General* tab. In the *Rotate* field type 60 degrees, click *OK*.
- Select *File > Insert Design* and select design #21000-04 *Floral Leaf 1*. Click *Open*.
- Left-click once on the *Scale by 20% Down / Up* icon.
- With the leaf still selected, click *Mirror Horizontal* and then *Mirror Vertical*.
- Move the leaf below the bird's tail.

- Double-click the design to open the Object Properties box and click on the *General* tab. In the *Rotate* field type -30 degrees and click OK.
- Position the leaf's tip in the "v" of the bird's tail feathers.



- Select *File > Select All*. In the panel above the *Color Film* click *Sequence by Color*, then click *OK*.
- Select *File > Save As* and navigate to the folder of your choice. Name the file *Panel_3.ART60*.

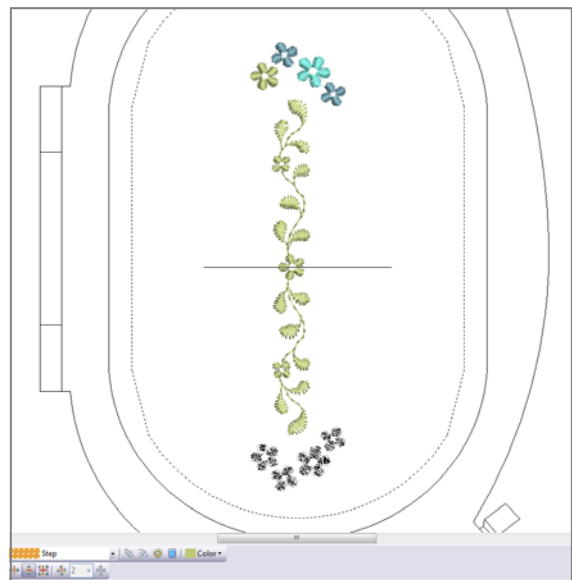
Panel 4

- Select *File > New*.
- Select *File > Insert Design* and select design #21000-11 Flower 2. Click *Open*.
- Left-click twice on *Rotate 45% CCW / CW*.
- Select *File > Insert Design* and select design #21000-13 Flower 4, click *Open*.
- Left-click twice on *Rotate 45% CCW / CW*.
- Drag Flower 4 below the first flower.
- Select *File > Insert Design* and select design #21000-12 Flower 3. Click *Open*.
- Left-click twice on *Rotate 45% CCW / CW*.
- Drag the flower below the second flower.
- Click *Edit > Select All*.

- Left-click once on *Scale by 20% Down / Up*.
- Click on the *Align Centers (Vertical)* icon, and then click on the *Space Vertically* icon.
- Click *File > Select All*. In the panel above the *Color Film*, click *Sequence by Color*.
- Click *File > Save As* and navigate to the folder of your choice. Name the file *Panel_4.ART60*.

Panel 5

- Select *File > New*.
- Select *File > Insert Design* and select design #21000-18 Vine Border. Click *Open*.
- Select *File > Insert Design* and select #21000-14 Little Flower Group, click *Open*.
- With the Flower Group still selected, left-click twice on the *Rotate 45% CCW / CW* icon.
- Move Flower Group to top of Vine Border.
- Click *Mirror-Merge Vertical* using the center flower of the Vine Border for placement.



- Select *File > Select All*.
- In the panel above the *Color Film*, click *Sequence by Color*.
- Select *File > Save As* and navigate to the folder of your choice. Name the file *Panel_5.ART60*.

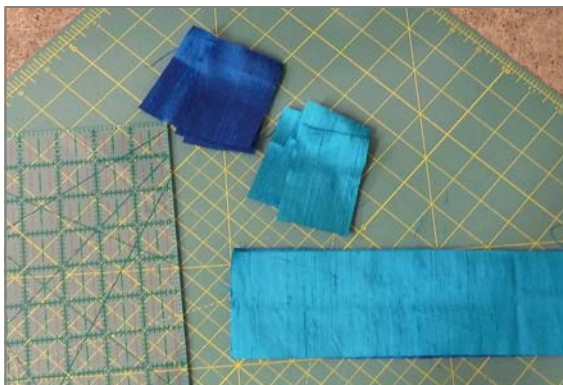
Embroider the Panels

- Cut six white fabric panels approximately 11" x 14" each.
- Hoop two layers of OESD Ultra Clean & Tear stabilizer and one piece of white fabric in the Large Oval Hoop. Spray 505 Temporary Spray Adhesive between each layer before hooping.
- Embroider each of the 6 panels using the design combinations created above. (Remember that Panel 1 will be stitched twice.)
- Gently tear away the stabilizer one layer at a time from behind the designs when complete.
- Use a rotary cutter and ruler to trim each panel to within $\frac{3}{4}$ " of the top and bottom of the embroidery.



Assemble the Banner

- Mark the center of each of the embroidered panels and pin each section together with the next, matching up the center marks. Stitch together with $\frac{1}{4}$ "-wide seam allowances using Patchwork Foot with Guide #57.
- Cut several 3" strips from the Aqua and Marine Blue silk pieces. Sub-cut the strips into 2" pieces. You will need ten 2" x 3" pieces of each color.



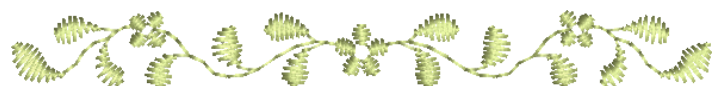
- Using Patchwork Foot with Guide #57, sew ten pieces together along the 3" edge, alternating the colors. Press seam allowances to one side.



- Cut the strip in half lengthwise at $1\frac{1}{2}$ " and turn one side around so that the colors alternate with each other in a checkerboard pattern.



- Repeat this process for the second border, and sew borders to the top and bottom of the banner.



- Cut a piece of backing fabric and low-loft white batting approximately 15" wide by 27" long. Layer the pieced banner top, batting and backing fabric, securing around the outside edges with pins.
- Attach the Sole with Central Guide to Walking Foot #50. Stitch-in-the-ditch with matching thread between each panel.



- After completing the test run, apply three different decorative fibers meandering across the length of each checkerboard border. Because the top thread is clear, you will not see the zigzag stitching which is holding down the decorative fiber.



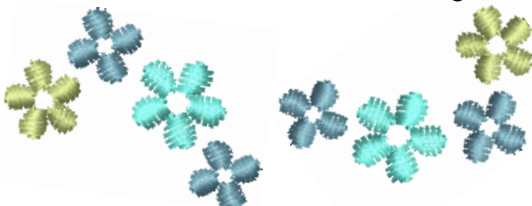
- Remove the Sole with Central Guide and attach the Open Toe Sole to Walking Foot #50. Staystitch about 1/8" along the outside edge of all four sides of the banner for stability.



Couching Decorative Fibers

Couching fancy fibers and decorative threads over the borders of the banner adds movement, texture and interest!

- Attach Braiding Foot #21/12C to the sewing machine. Use regular sewing weight thread in the bobbin to match the backing fabric. Thread the needle with YLI Clear Nylon Monofilament. Reduce the thread tension to 2 and feed the decorative fiber through the hole in the front of the presser foot, pulling both the monofilament and decorative fiber 3-4" to the back.
- Select the zigzag stitch and test the stitch setup using a practice quilt sandwich. Adjust the stitch width of the zigzag if desired. If the Monofilament breaks during stitching, reduce the top tension further until it stitches without breaking.



Finishing the Banner

- Using a rotary cutter and ruler, trim the banner to about 13" x 27". Using your favorite quilt binding method, use the light olive green silk to bind the edges of the banner.

Optional: Sew a hanging sleeve to the back/top of the banner and insert a dowel with end caps (painted white). Use 15-20 lengths of the remaining fibers to create a "hanger" for the banner, tying them to the dowel. Allow the fibers to hang loose on one or both sides of the banner for added visual interest.