



# Garden Couture Bonus: Dress Form Stand

Created by Dawn Schneider

Create a larger wall hanging to the Garden Couture dress form in *Through the Needle ONLINE #11* by adding a beautiful stand.

## Supplies

### Machine & Accessories

- BERNINA Embroidery System
- Jumbo Hoop\*
- BERNINA Embroidery Software 6
- Teardrop Embroidery Foot #26
- Patchwork Foot with Guide #57/57D

### Embroidery Collection

- BERNINA Exclusive "Sepia Petals" Collection #21002; designs #21002-07, 13, 20

### Fabric & Notions

- 1 yard tone-on-tone white cotton (this includes fabric for the backing)
- ½ yard of fabric for borders (cut into 3½" x width-of-fabric strips)
- 8" x 12" piece of sheer organza, white
- 25" x 35" piece of bamboo or cotton batting
- 1 Printed Treasures Sew-On Inkjet Printable Fabric Sheet
- OESD Stabil-Stick Tear-Away Stabilizer
- 2 spools of Isacord embroidery thread, one dark and one medium light
- Bottom Line bobbin fill to match fabric
- Organ Titanium Embroidery needles, size #75/11 Sharp
- Sewline Marking Pencil
- Rotary cutting equipment
- Instant Antique Spray (optional)

\*This project may be stitched on any embroidery machine using any hoop size, but will require additional splitting and multi-hooping.



Finished size: approximately 21" x 20½"

To make this larger multi-hooped project, follow the instructions for the Garden Couture dress form in *Through the Needle ONLINE #11*, and continue with the following instructions:

### Digitize the Dress Form Stand

- Select *File > Insert Design*; select design #21002-21 from the Sepia Petals collection and click *Open*.
- With the design selected, left click two times on the *Rotate 45°* icon to turn the design a total of 90° counterclockwise.

- Click and drag the design, centering it under the dress form.
- Open *Object Properties > General* tab. Resize the “pole” to 21.637 mm x 128.012 mm (0.85” x 5.04”); this will allow the arrangement created previously to fit inside the Jumbo hoop for the first hooping.
- Select *File > Insert Design*; select design #21002-13 from the Sepia Petals collection and click *Open*.
- Open *Object Properties > General* tab. Change the width to 104.139 mm and the height to 123.196 mm (4.10” x 4.80”). Set *Rotate By* to 112°. Click *Okay* to close the dialog box.
- Click and drag the design into position below the “pole” created in the previous step.
- With the design selected, click on the *Mirror Merge Vertical* tool and select 2 from the drop down list. Press and hold the *CTRL* key on your keyboard as you move the “phantom” design into position beside the original. Release the mouse to place the design.



- Select *File > Insert Design*; select design #21002-07 from the Sepia Petals collection and click *Open*.
- Select the *Mirror Vertical* tool to mirror image the design. Right click two times on the *Rotate by 45°* tool to rotate the design 90° clockwise.
- Click and drag the design below the previous ones, overlapping slightly.
- With the design selected, click on the *Mirror Merge Vertical* tool and select 2 from the drop down list. Press and hold the *CTRL* key on your keyboard as you move the “phantom” design into position beside the original. Release the mouse to place the design.

- If needed, click and drag these designs to center them under the pole.

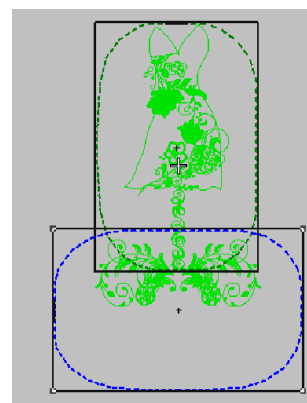


## Calculate the Hoopings





- Select the *Hoop Layout* tab to begin the multi-hooping process.
- Click on the hoop on your screen, then drag it into place so it covers the dress form and pole. If the dress form and pole do not both turn green, go back to *Embroidery Canvas*, select the pole, and move it closer to the dress form. If necessary, make the pole shorter; if needed, move it up to touch the base of the dress.

*Note: Do not resize the dress form! You've already designed and printed the dress form appliqué and digitized the embellishments, and you won't want to re-process them.*

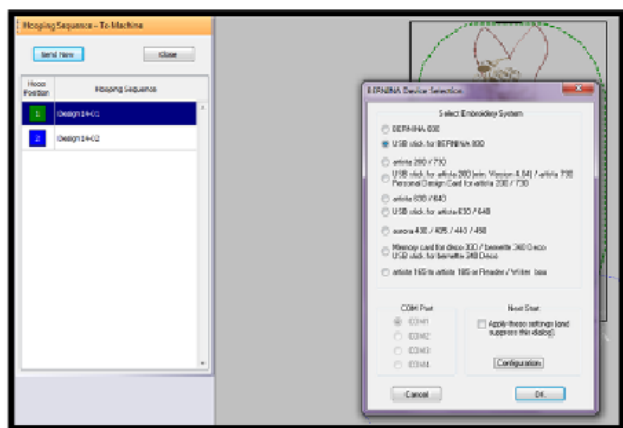
- Select the *Add Hoop* icon. Left click two times on the *Rotate Hoop Left/Right* icon to rotate the hoop 90°.
- Click and drag the hoop into position with the center reference mark below the lowest point of the design.



### BERNINA Embroidery Software 6 Icons

- |   |                    |
|---|--------------------|
|  | Add Hoop           |
|  | Rotate Hoop        |
|  | Calculate Hoopings |
|  | Write to Machine   |

- Select the *Calculate Hoopings* icon to make sure the software is reading the placement correctly. This should result in two hoopings. Press *Okay* to close the *Calculate Hoopings* dialog box.



- Select the *Write to Machine* icon. View the *Hoop Sequence* and if satisfied with the hoopings, select *Send Now* and choose your embroidery machine or USB stick.
- Repeat this process for the remaining hoop sequence.

## Embroider the Dress Form Embellishments and Stand

- Cut the fabric into two pieces, each approximately 22" x 36".

### First Hooping

- Remove the paper topping and apply Stabil-Stick Tear-Away Stabilizer to the back of one fabric piece. Hoop the upper half of the fabric/stabilizer.
- Stitch the first color, which is the placement line for the printed graphics on the dress form. Place the Printed Treasure print-out within the outline and layer the sheer organza on top.
- Stitch the second color, which is the stem stitch around the dress form. Once this is stitched, use small blunt-tip scissors to trim the sheer fabric close to the stitching.
- Stitch the remainder of the design including the last color change, which is the placement guide (red X's). Do not remove your project from the hoop until you get confirmation that your design has successfully stitched.

*Tip: Mark your reference marks with a Sewline marking pencil before removing your project from the hoop, making sure that you mark exactly where the needle penetrations are.*

### Second Hooping

- Hoop a layer of Stabil-Stick Tear-Away Stabilizer.
- Stitch the first color, the hooping reference marks (green X's).
- Remove the hoop from the machine and align the red X reference marks from the first hooping with the green X reference marks.

*Tip: To align the reference marks for the second hooping, place a piece of 2" thick foam under your hoop. Place quilting pins directly through the center of the red X reference marks on your fabric and then through the center of the corresponding green X reference marks on the stabilizer.*

- Place the hoop back on the machine and stitch the remainder of the design.
- When the design has finished stitching, remove the fabric from the hoop and trim it to 15" x 22".

## Complete the Wall Hanging

- Stitch the 3½"-wide border strips around the outside of the finished panel.
- Layer the batting between the backing and the embroidered front.
- Finish your wall hanging using your favorite binding method.
- Add a little Instant Antique spray to emphasize the classic feel of the Sepia Petal designs.

Visit [www.berninausa.com](http://www.berninausa.com)

**Projects • Webinars • Promotions**