

BERNINA
8 Series

Papillion Pillow

Created by Susan Fears

This beautiful pillow uses built in designs on the BERNINA 830 from the Louisa Meyer Embroidery Collection. A gorgeous butterfly stitched in the Jumbo Hoop fills the center of the pillow, and Endless Embroidery techniques are used to create the all-over pattern on the side panels.

Supplies

- ◆ BERNINA 830 Sewing & Embroidery Machine
- ◆ Jumbo Hoop
- ◆ Mega Hoop
- ◆ Clear Applique Foot #23
- ◆ Edgestitch Foot #10 /10D
- ◆ 1/3 yard pink silk dupioni in pink
- ◆ 1/2 yard taupe silk dupioni
- ◆ 1/2 yard backing fabric
- ◆ Armo[®] Weft interfacing
- ◆ Pillow form, 16" x 20"
- ◆ 1 yard 1/8"-diameter filler cord
- ◆ Ultra Clean & Tear stabilizer
- ◆ 101 Quilt Basting Spray
- ◆ Organ Embroidery needle, Sharp, #75
- ◆ Isacord embroidery thread
- ◆ Embroidery bobbin thread
- ◆ Construction thread



Cutting Instructions

Cut two pieces of pink silk dupioni large enough to be hooped in the Mega Hoop (approximately 10" x 22" each).

Cut the center panel for the butterfly large enough to be hooped in the Jumbo Hoop (approximately 18" x 22").

Preparation

Fuse Armo Weft interfacing to all fabrics to be embroidered.

Use two layers of Ultra Clean & Tear stabilizer for embroidery. Bond layers together with 101 Quilt Basting Spray. Hoop fabric and stabilizer together.

Center Panel

For the pillow center, select #49 from the Louisa Meyer design collection on the BERNINA 830. Hoop the fabric and stabilizer in the Jumbo Hoop. Embroider the design. Remove excess stabilizer and trim center panel to 12 1/4" x 17".

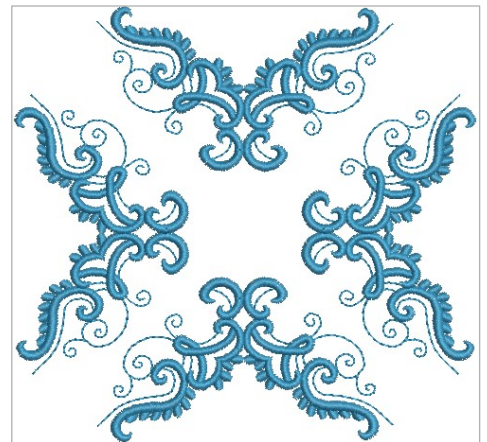
Side Panels

Select design #11 from the general folder.

Select the Medium Hoop. *Note: The Medium Hoop is being used to as a tile to develop the endless embroidery pattern.*

Rotate the design 45° and place the long side of the pattern on the edge of the Medium Hoop.

Duplicate the design and rotate 90°. Place the long side along the edges of the Medium Hoop. Repeat for all four sides.



Select the Mega Hoop and select Endless Embroidery to fill the hoop.

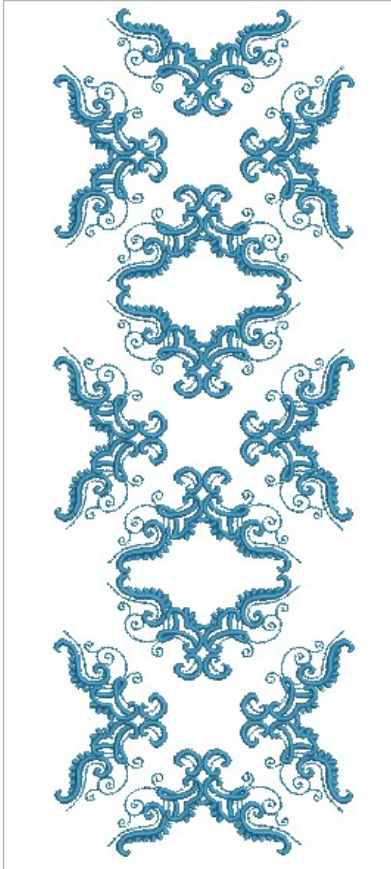
The reference marks are not needed and can be deselected.

Hoop two layers of Ultra Clean & Tear stabilizer with the interfaced silk dupioni in the Mega Hoop.

For a unified look, thread the embroidery system with thread to match the background of the center panel.

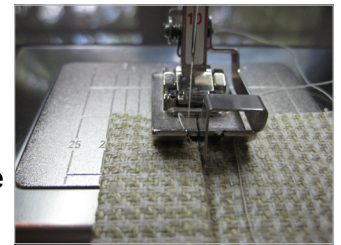
Embroider the pattern two times—once for each border panel.

Trim side panels to 5¼" x 17".



Double fold one 17" side of each back panel with a 1" hem. Use Edgestitch Foot #10 to stitch close to the inside fold. These hemmed edges will form the opening for the pillow.

Use a ½" seam allowance to join the pillow front to the back.



Turn right side out. Insert pillow form and fluff.



Pillow Assembly

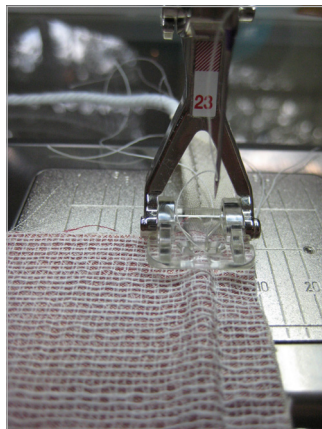
Cut bias strips to cover the filler cord, wide enough to cover the cord plus two seam allowances (approximately 1¾"), and 18" long.

Fold the bias strip around the filler cord. Use Clear Applique Foot #23 to cover cord.

Join one side panel to the center panel with the covered cord in the middle. Move the needle position one position closer to the piping to hide the stitches used to cover the cording.

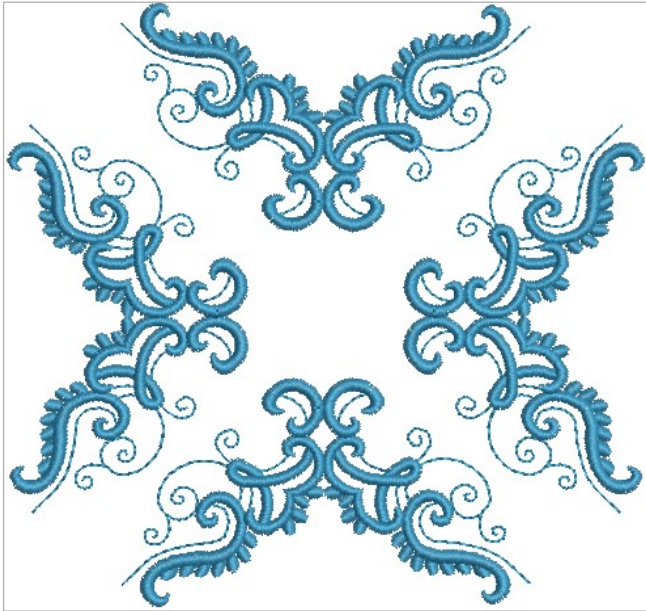
Repeat for the second panel.

Cut two pieces of fabric for the pillow back, each 13" x 17".

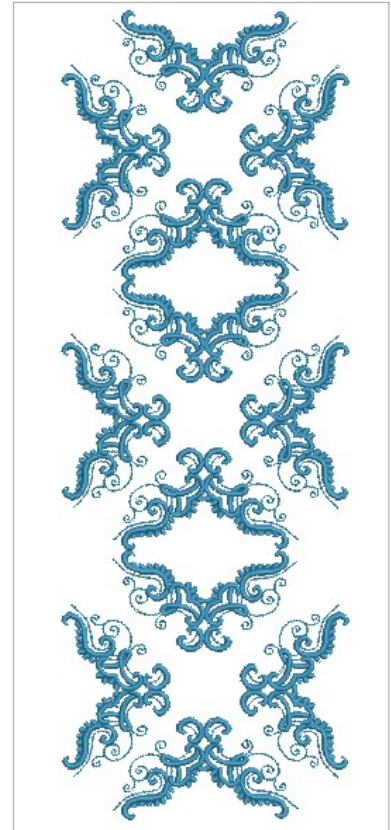


Take It Another Step...

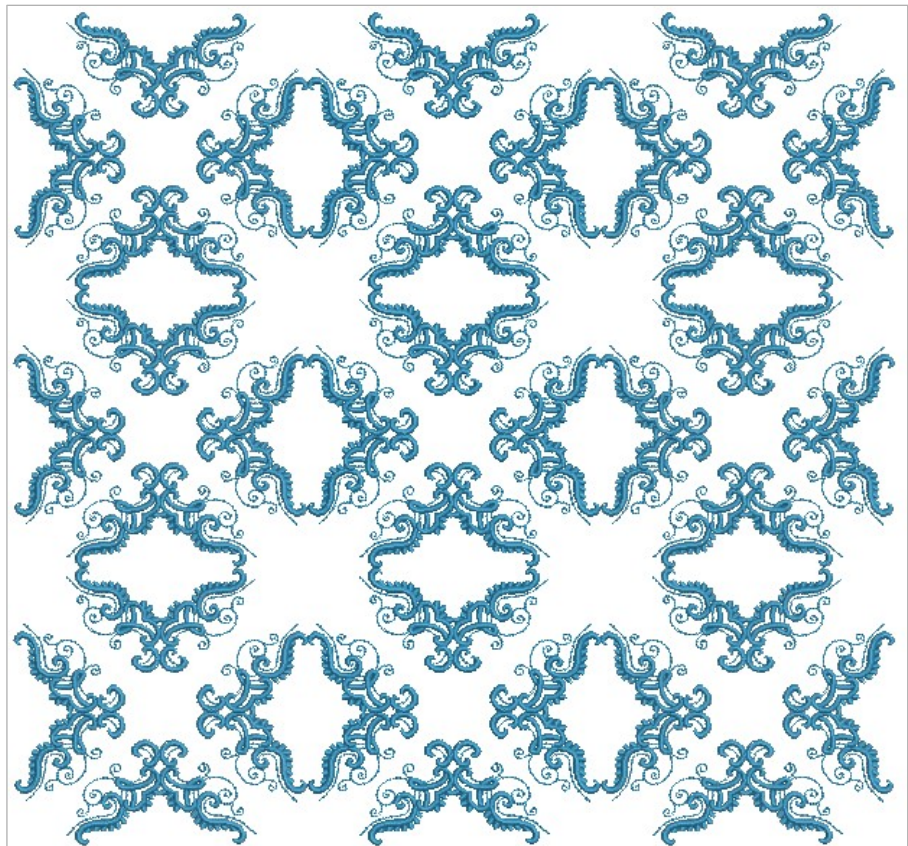
Arrange the pattern. (Design #11, rotated 45°, duplicated and arranged with the long side of each pattern along one side of the Medium Hoop.)



Activate the Mega Hoop and Endless Embroidery.



Rotate the pattern 90° and select Endless Embroidery a second time to get the impact of the pattern sewn vertically **and** horizontally. Stitching this expanded design requires many hoopings and the use of side reference marks as well as the lower left and right marks.



Visit
www.bernausa.com
for additional projects
and information.