

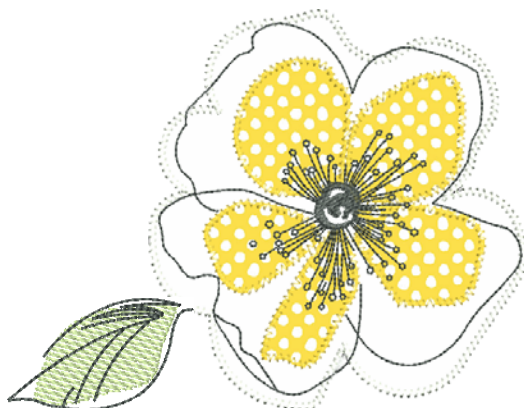

**Embroidery
Software 6**

**CutWork
Accessory**

Dress up the picnic table with a reversible, mitered border table topper using appliqué designs from the BERNINA Exclusive Bold & Beautiful Embroidery Collection and the coordinating Benartex Fabric Collection.

Bold & Beautiful Table Topper

Created by Elaine Cibelli



Supplies

Machine & Accessories

- BERNINA Sewing and Embroidery Machine
- Jumbo Hoop (or your largest embroidery hoop)
- BERNINA Embroidery Software 6
- BERNINA CutWork Accessory (optional)
- Edgestitch Foot #10/10C/10D
- Teardrop Embroidery Foot #26
- Echo Quilting and CutWork Foot #44
- Patchwork Foot with Guide #57/57D

Embroidery Collection

- BERNINA Exclusive Embroidery Collection
Bold & Beautiful #8000 -
Designs #80001-01, 04, 06, 12, 13, 17, and 29

Fabric & Notions

- Benartex Bold & Beautiful Fabric Collection
 - ◊ 1¼ yards of center tablecloth fabric - #3235-99 (trim selvages from sides and square to 45" x 45")
 - ◊ 2½ yards of striped fabric for border - #3233-09 (allow extra if using another fabric)
 - ◊ 1¼ yards of lining fabric - #3231-11 or other print
 - ◊ 2½ yards of fabric for border lining - #3233-09
- 505 Temporary Spray Adhesive
- OESD HydroStick Tear-Away Stabilizer
- OESD MediumWeight Tear-Away Stabilizer (black)
- OESD Applique Fuse & Fix
- Isacord embroidery thread
- OESD Bobbin Thread
- Organ Embroidery needles, size 80/12 Sharp
- Rotary cutting equipment
- 14" x 14" Nifty Notions "Cut for the Cure" Ruler
- 7" x 24" Nifty Notions "Cut for the Cure" Ruler
- Pinmoor (anchors)

Cut the Appliqué Shapes

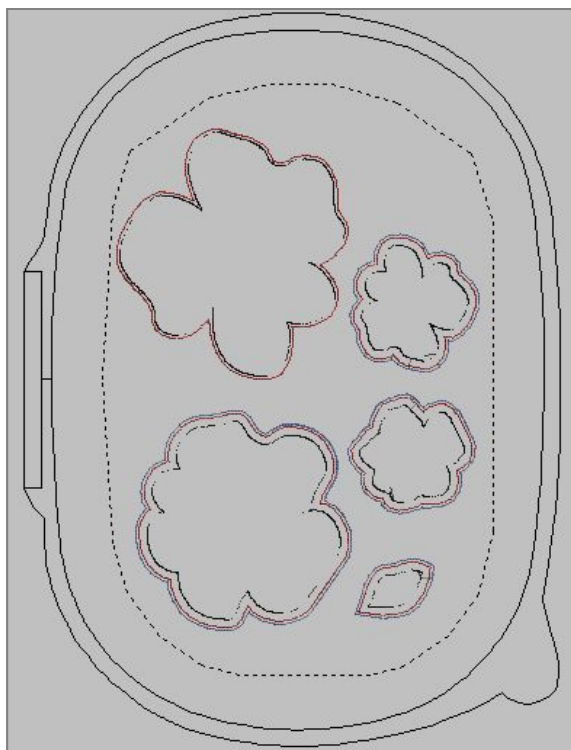
Some of the *Bold & Beautiful* designs are appliqué designs. These may be cut with scissors or with the BERNINA CutWork Accessory.

Using Scissors

- Print the appliqué pattern pieces from the PDF included on the CD or USB stick.
- Adhere Appliqué Fuse & Fix to the wrong side of the appliqué fabric.
- Place the pattern on top of the appliqué fabric and cut out the appliqué shapes.

Using the BERNINA CutWork Accessory

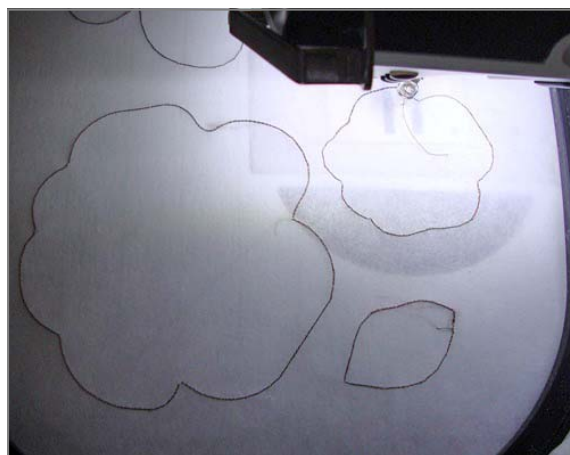
- Bring the desired CutWork file onto the editing screen of your embroidery machine. If desired, click on the *Add* icon to bring additional designs onto the screen; position them so multiple shapes can be cut in one hooping.



- Use the *Stitch Resequence* button on the BERNINA 830 to resequence the design so there are fewer cutting position changes.

Note: You can also use BERNINA CutWork Software to assemble the desired cutwork designs into one hoop. If you do not have a BERNINA 830, this is the best method to use since you can stitch-sequence the designs in the CutWork Software.

- Hoop a piece of HydroStick stabilizer by itself and stitch out the placement lines for the appliqué designs.



- Adhere Appliqué Fuse & Fix to the wrong side of the appliqué fabric pieces.
- Place the appliqué fabric in the hoop so it covers the placement lines, making sure the fabric is facing up.

Tip: The BERNINA CutWork Tool works better with more layers, so stack several layers of fabric colors on top of one another in the hoop.

- Stitch the next color — the tackdown stitches — one for each shape.
- Attach Echo Quilting and Cutwork Foot #44 to the embroidery machine and replace the needle with the CutWork Tool.
- Cut out the shapes following the prompts on the screen to rotate the position of the CutWork Tool.
- Set the cut shapes aside.

Digitize the Table Topper Embroidery

- Open BERNINA Embroidery Software 6. Open a *New* file.
- Right click on the *Show Hoop* icon and select the *artista Jumbo Hoop* from the drop-down menu.
- Select the *Embroidery Canvas* tab.
- Select *File > Insert Design*. Select #80001-01. Repeat to insert designs #80001-04, 06, 12, 13, 17, and 29.

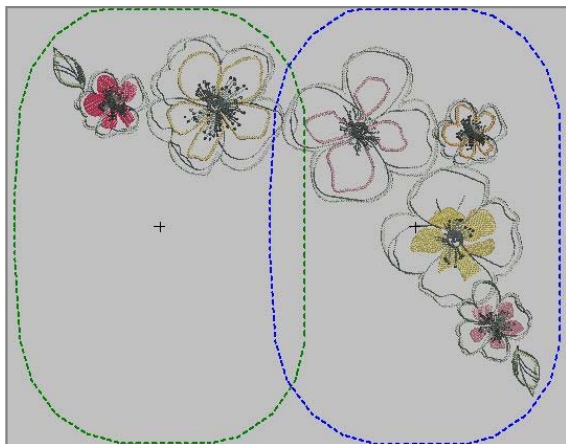
- Arrange designs as shown in the diagram below, using the editing tools to rotate and position the designs as desired.

Note: Design #29, the leaf, is used twice, once at the upper left and once in the lower position.

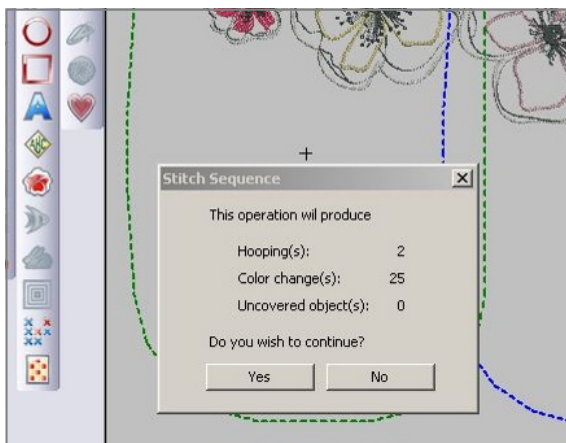
- Select the *Hoop Layout* tab. Select the hoop and then click *Add Hoop Right*. Position the two hoops so the entire arrangement is covered.

*Tip: If you find it hard to cover all the objects, return to *Embroidery Canvas* and arrange the designs closer together as needed.*

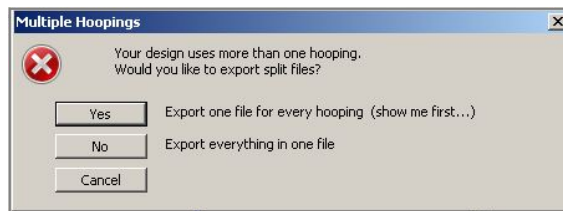
- In the *Hoop Layout* tab, select the *Calculate Hoopings* icon. This should result in a message that says, "The current layout of hoop positions will result in two hoopings. All objects in the design are covered by hoops." Click *Okay* when you get this message.



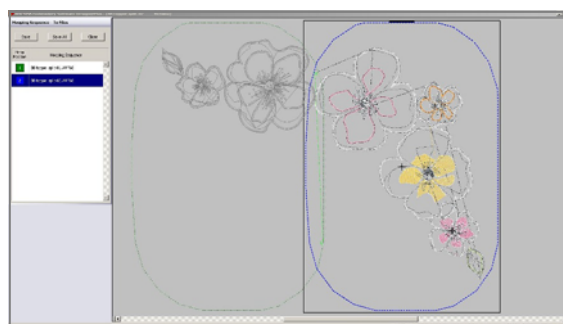
- Select the *Embroidery Canvas* tab.
- To reduce the number of repeated thread changes, select *Arrange > Stitch Sequence*. After the sequencing has been calculated, click *Yes*.



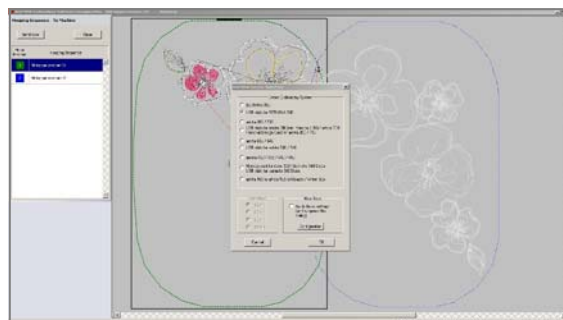
- Select *File > Save As*. Name the file **BB Table Master** and save it in the location of your choice. In the dialog box that opens, click the *No* beside *Export Everything in One File*.



- Select *File > Save As*. Name this file in the folder of your choice, but name it **BB Table Split**. In the *Multi-Hoopings* dialog box that opens click *Yes—Export one file for every hooping...show me first*.
- In the *Hoop Sequence—To Files* box that opens, click *Save All*. Click *Close*.



- *Embroidery Canvas* will open; click on the *Write to Machine* icon.
- The *Hoop Sequence—To Machine* box should open, and the first design (**BB Table Split-01**) should be highlighted (dark blue).
- Click the radio button next to the machine of your choice and the transfer method (machine or USB) and transfer the first split design to the machine or USB stick.
- Select the second design (**BB Table Split-02**) and repeat the process.



- Print a template of the entire design (**BB Topper Master**) and rough cut around the arrangement to help determine design placement on the fabric. When satisfied with the position, mark the center for the first hooping on the tablecloth fabric.



- Cut a Jumbo Hoop-size piece of MediumWeight stabilizer. Affix it to the back of the embroidery area with 505 adhesive, then hoop the stabilizer and fabric as one unit.
- Bring the first split-hooping file (**BB Table Split-01**) onto the embroidery machine's editing screen. Stitch the design, including the reference marks.



- Hoop a piece of stabilizer by itself.
- Open the second split-hooping file (**BB Table Split-02**) and stitch the reference marks on the stabilizer.



- Spray the hooped stabilizer with 505 adhesive. Place a thumbtack through the center of each mark from the underneath the hooped stabilizer.
- Align the reference marks on the embroidered fabric with the points of the thumbtacks. Smooth the fabric into place on the stabilizer.



Tip: Use Pinmoor anchors to cover the tip of one thumbtack while securing the other fabric onto the other thumbtack.



- **Remove the thumbtacks.**
- Return the hoop to the machine and stitch the remainder of the design. Remove the stabilizer and press the embroidered appliqué.

- If desired, stitch a second grouping in the opposite corner of the tablecloth.



- Cut four lengths of the striped fabric according to the table topper width desired, adding an extra $\frac{1}{2}$ " for seam allowances. Measure the width of the strip; the borders of the sample are $9\frac{3}{4}$ " wide.



- Lay the center of the table topper on a flat surface and begin pinning a strip to one side, leaving tails on each end. The length of each tail should be the width of the strip plus 2".

Note: If using a different striped fabric for the borders, or matching print motifs at the corners, you may need extra length at each end.



Visit www.berninausa.com

Projects • Webinars • Promotions

- Attach Patchwork Foot with Guide #57/57D to the machine and use the notches on the foot as guides. Begin stitching $\frac{1}{4}$ " from the topper corner edge, and stop sewing $\frac{1}{4}$ " from the end. Repeat for the remaining three sides.



- Fold the table topper and borders in half diagonally and match up the seams. Use the 45° line on the ruler to draw a diagonal line extending from the crease of the main panel to the edge of the border.
- Stitch along this line to create the miter. Trim away the excess fabric, leaving $\frac{1}{4}$ " seam allowances. Press the seam allowances open. Repeat for the remaining three corners.
- Repeat the entire process for the lining to create a reversible table covering.
- Pin the top and lining together. Stitch together, leaving an opening for turning.
- Turn and press. Turn under the edges of the opening and pin them together.
- Edgestitch around the entire table topper using Edgestitch Foot #10/10C/10D. This stitching will also close the opening.

