



Bold & Beautiful Quilt Take Two

Created by Elaine Cibelli

Have you ever looked at a quilt and wanted to change the fabric, size, or design placement?

Use BERNINA Embroidery Software 6 and its Quilter program to create that change. Draw the block to the size desired, bring in your choice of fabrics, arrange the layout, and add embroidered embellishments. Print the templates, yardage, and cutting instructions from Print Preview and you're on your way to a new creation!

This quilt is a take-off of the Bold & Beautiful Quilt by Nina McVeigh.

Supplies

Machine & Accessories

- BERNINA Sewing & Embroidery Machine
- BERNINA Large Oval Hoop
- BERNINA Embroidery Software 6
- BERNINA CutWork Accessory & Software
- CutWork and Echo Quilting Foot #44
- Teardrop Embroidery Foot #26
- Patchwork Foot with Guide #57/57D
- BERNINA Stitch Regulator #42
- Bias Binder Attachment #88
- Binder Foot #95/95C

Embroidery Collection

- BERNINA Exclusive Embroidery Collection - Bold & Beautiful #80001

Fabrics & Notions

- Benartex "Garden Club" Fabric Collection
 - ◊ ½ yard - block background (#4627-45)
 - ◊ ¼ yard - block strips (#4623-44)
 - ◊ ¼ yard - block strips (#4625-5)
 - ◊ ¼ yard - block strips (#4628-44)
 - ◊ ¼ yard - block strips (#4623-40)
 - ◊ ¼ yard - block strips (#4623-86)
 - ◊ ¼ yard - inner border (#4623-84)
 - ◊ ½ yard - middle border (#4628-84)
 - ◊ ½ yard - outer border (#4622-45)
 - ◊ 1½ yards backing (#4623-44)
 - ◊ ¾ yard - main binding fabric (#4623-44)
 - ◊ ½ yard of fabric - double binding (#4628-44)
- ½ yard white for appliqué background
- Four assorted 8" x 10" fabrics for appliques



Finished quilt: 36½" x 44½"

- Crib size batting (45" x 60")
- 505 Temporary Spray Adhesive
- 1 package OESD Appliqué Fuse & Fix
- OESD Ultra Clean & Tear Stabilizer
- OESD HeavyWeight Tear-Away Stabilizer
- Isacord embroidery thread; colors #0112, 0605, 0800, 1301, 2723, and 9605
- OESD White Bobbin Thread
- Thread for piecing
- Organ Titanium Embroidery needles, size #80/12 Sharp for embroidery
- Microtex needles, size #75/11 for piecing
- Quilting needles, size 90/14 for quilting

Create the Quilt Design

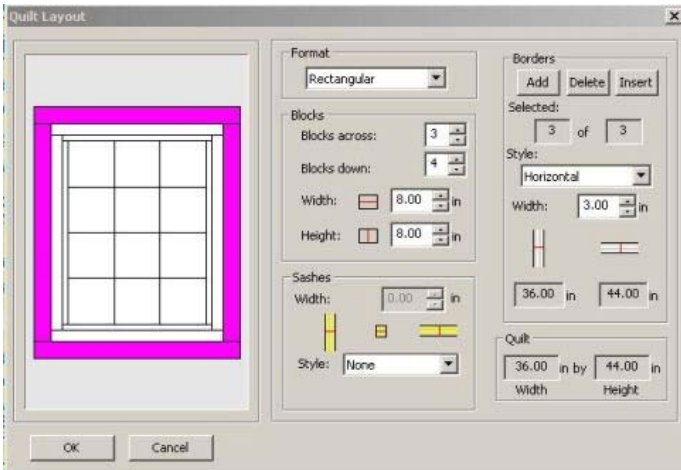
Design the Quilt Layout

- Open BERNINA Embroidery Software V6. Click on the Quilter icon, then click on the *Quilt Layout* icon.



- Adjust the settings:
 - ◊ *Format*: Rectangular
 - ◊ 3 blocks across, four blocks down
 - ◊ *Width*: 8", *Height*: 8"
 - ◊ *Sashes*: None
 - ◊ Click *Add*, select *Style*: Horizontal and *Width*: 1"
 - ◊ Click *Add*, select *Style*: Horizontal and *Width*: 2"
 - ◊ Click *Add*, select *Style*: Horizontal and *Width*: 3"

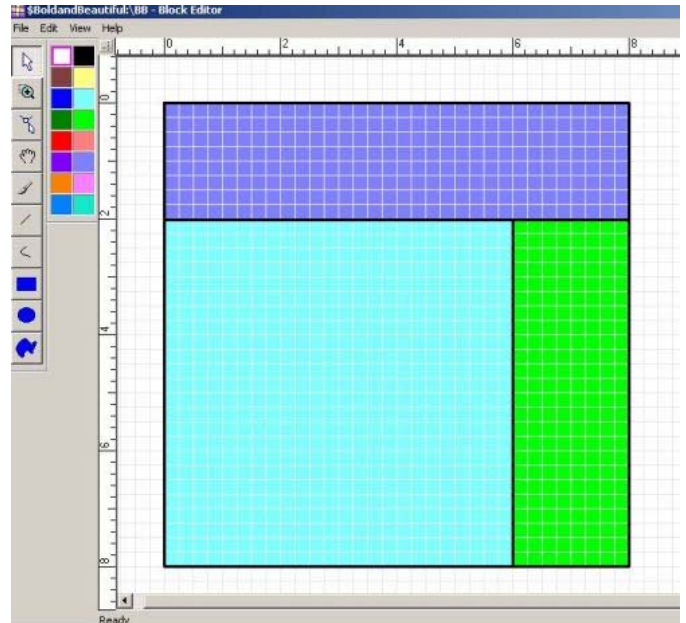
The software calculates the size of the finished quilt, 36" x 44"; click *OK*. The quilt layout is shown on the screen.



Create the Block Design

- Go to *File > Manage Blocks*. Select and right click on *Library Manager > New Library*. In the *Input Library Name* box, enter **BoldandBeautiful** in the name field. Click *OK*.
- Select the BoldandBeautiful folder and right click in the empty area on the right. Select *New Block* and name the block **BB**.
- Double-click on the BB block to open *Block Editor*. Select *Edit > Block Size*, change the size to 8", and click *OK*.
- Select the *Line* tool and draw a straight line across the block 2" from the top of the block.
- Draw a vertical line to the right, beginning at the horizontal line just drawn and ending at the lower edge of the block.

- Select the *Color* tool and pick a color from the *Color Chooser*. Place the color in the top section of the block.
- Continue in this manner, adding a different color to each of the remaining sections as shown.
- Select *File > Save*, then *File > Exit*. Click *Close*.



Place the Blocks

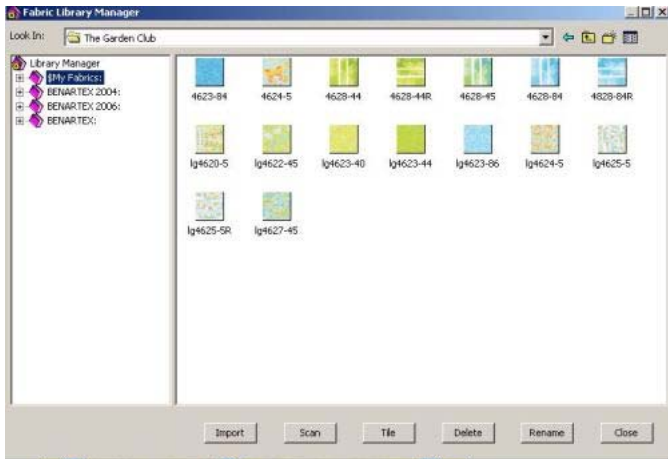
- In Quilter, click on the *Library* icon, select the *Blocks* tab, and navigate to the BoldandBeautiful folder.
- Click on the + sign next to the folder and select the BB block. Hold the *CTRL* key on the keyboard and click on any block in the quilt; all of the squares will be filled.
- Click on the *Select* tool. Select individual blocks and use the *Rotate*, *Mirror Horizontal* and *Mirror Vertical* tools to rearrange the blocks as desired.
- Select *File > Save As*, and name the file *Bold and Beautiful Quilt*.

Visit bernina.com!

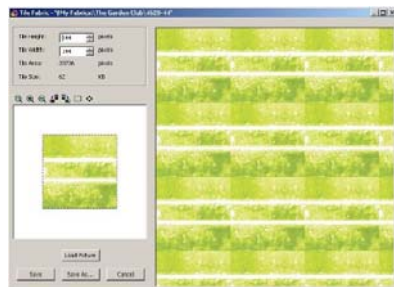
Projects • Webinars • Promotions

Import the Fabric Swatches

- Create a *Fabrics* folder on your computer where you will be able to find it again. (The desktop is a good location.)
- Go to www.benartex.com and locate the **Garden Club** collection. Select *View All*.
- Right click on each fabric swatch, select *Save Picture As*, and save each fabric as a **.bmp** image to your *Fabrics* folder.
- In Quilter, select *File > Manage Fabrics* to open the *Fabrics Library Manager*.
- Select and right click on *Library Manager*, select *New Library*, and name the new file **The Garden Club**.
- Double click on *The Garden Club* and select *Import*. Navigate to your *Fabrics* folder and change *Files of Type* to *All Files*. Select a fabric to import, and click the *Import* button.
- Continue in this manner until all the fabric swatches have been imported. Click *Close*.

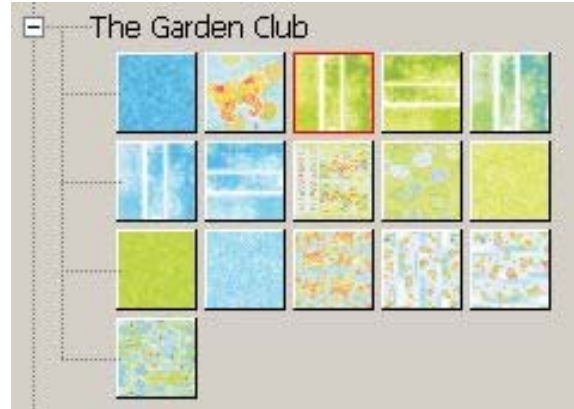


Tip: To scan your own fabrics to add to the Quilter program, see pages 19-20 of the Quilter on-screen manual.



Place the Fabrics

- Select the *Paintbrush* icon. Click on the *Library* icon, select the *Fabrics* tab, and click on the + in front of *The Garden Club* to open the folder.



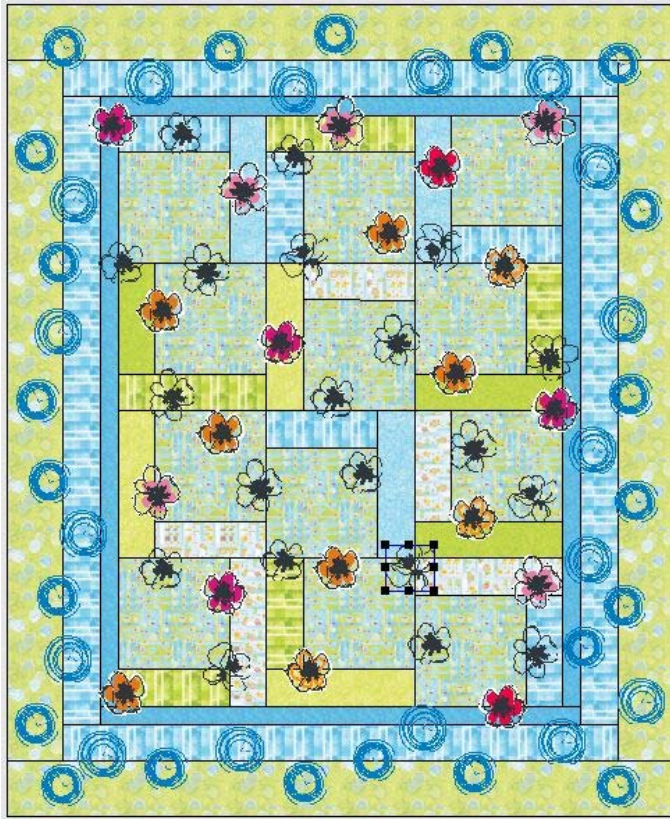
- Right click on a fabric and click inside any section of any block to place it. Continue until all blocks have fabric in each section.
- Select a fabric for the inner border, hold the *CTRL* key on the keyboard as you click in part of the inner border. The selected fabric will automatically be placed in all four inner border pieces.
- Select and place fabrics in the two remaining borders.

Preview Embroidery on the Quilt

Previewing the designs on your quilt in the Quilter program allows you to decide the placement and number of designs to put on your quilt.

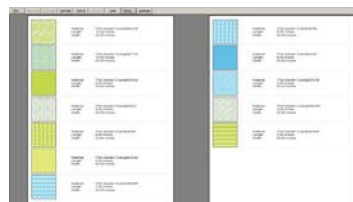
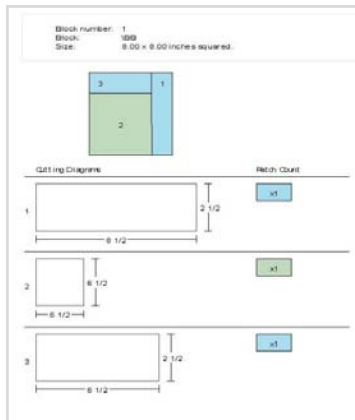
- Click on the *Embroidery Window* icon, which opens the *Embroidery Canvas* screen.
- Select *File > Insert Design* and navigate to the *Bold and Beautiful* folder on your computer. Select design #80001-12 and click *Open*. Resize, rotate, etc. as desired.
- Select *File > Save and Return* to toggle back to Quilter; the embroidery window closes and the design appears in a gray box in the upper left of the Quilter screen. Use the *Select Object* tool drag the embroidery motif to the desired position on the quilt.
- Use *Edit > Copy* and *Edit > Paste* to create multiples of designs as desired.

- Continue inserting and positioning designs in this manner until you are pleased with the layout.



Printing

- To print a quilt layout to use as a piecing guide, select *File > Print Preview*, select *Whole Quilt*, and click on the *Options* tab. Select *Fit to Page* and place checkmarks in the *Blocks* and *Embroidery* boxes. Click *OK > OK*. Click on the *Print* button. Click *Close* after the pages print.
- To print the fabric requirements, go to *File > Print Preview*, select *Yardage*, and click *OK*. Click on the *Print* button. Click *Close* after the pages print.



Construct the Quilt

Cut the Fabric Pieces

- Cut twelve 6½" squares from the block background fabric, 4627-45.
- Cut 2½" x width of fabric (wof) strips from the block fabrics, #4623-44, 4625-5, 4628-44, 4623-40, and 4623-86. Sub-cut the strips into twelve different 6½" and 8½" lengths.
- Cut four 1½" x wof strips from the inner border fabric, #4623-84.
- Cut four 2½" x wof strips from the middle border fabric, #4628-84.
- Cut four 3¼" x wof strips from the outer border fabric, #4622-45.
- Cut four 2½" bias strips from the binding fabric.
- Cut four 1⅛" strips from the double-binding fabric

Piece the Blocks

- Set up the sewing machine with a Microtex #75/11 needle, Patchwork Foot with Guide #57/57D, and construction thread.
- Following the layout created and printed in the Quilter program, randomly stitch the 2½" x 6½" strips to the center squares. Press.
- Randomly stitch the 2½" x 8½" strips to one side of the now 6½" x 8½" blocks. Press.
- Stitch the 8½" blocks into in sets of three. Press.
- Stitch the four rows together. Press.
- The center of the quilt should measure 24½" x 32½".

Add the Borders

- From the 1½" inner border fabric strips, cut two 1½" x 24½" strips. Stitch them to the upper and lower edges of the quilt center. Press.
- From the remaining 1½" inner border fabric strips, cut two 1½" x 32½" strips. Stitch them to the right and left sides of the quilt center. Press.
- From the 2½" middle border fabric strips, cut two 2½" x 26½" strips. Stitch them to the upper and lower edges of the quilt. Press.

- From the remaining 2½” middle border fabric strips, cut two 2½” x 34½” strips. Stitch them to the right and left sides of the quilt. Press
- From the ¾” outer border fabric strips, cut two ¾” x 30½” strips. Stitch them to the upper and lower edges of the quilt. Press.
- From the remaining ¾” outer side strips, cut two ¾” x 38½” strips. Stitch them to the right and left sides of the quilt. Press.
- The quilt top should measure 36½” x 44½”.

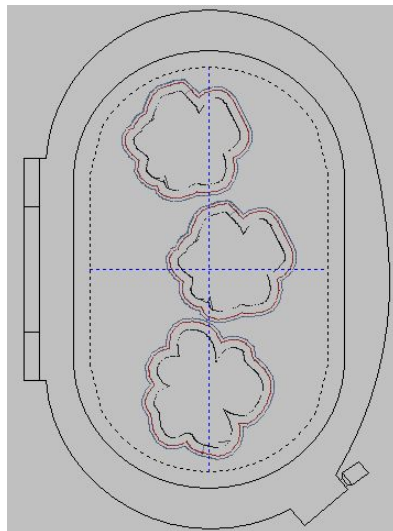
Prepare the Appliqué Pieces

Many of the floral embroideries used for this quilt are appliqué designs. The appliqué fabrics may be cut by hand using the patterns and instructions provided with the design collection on the CD or USB stick.

The appliqué shapes can also be cut using the BERNINA CutWork Accessory using the Bonus files that accompany the collection. Follow the directions below for using the CutWork Accessory.

Combine the CutWork Applique Files

- In BERNINA Embroidery Software 6, open a New file.
- Right click on the Show Hoop icon and select the artista 255 x 145 Oval hoop. Place a check next to Display Hoop and click OK.
- Select File > Insert Design. Select CutWork design #80001-12CWA and click Open.
- Repeat to bring designs #80001-13CWA01 and #80001-17CWA into the workspace.
- Position the three designs so they fit within the hoop, but do not rotate, mirror image, or change the size of the designs.



- Select Edit > Select All. Select Arrange > Stitch Sequence and click OK in the Stitch Sequence dialog box if there is 1 hooping and 0 uncovered objects.
- Click the Send to Machine icon and send the designs to the embroidery machine.

Cut the White Flower Appliqué Shapes

- Hoop a piece of HeavyWeight Tear-Away by itself in the Large Oval Hoop. Spray the top of the hooped stabilizer with 505 Temporary Adhesive Spray.
- Press eight sheets (8” x 10”) of Appliqué Fuse & Fix to the wrong side of the white fabric.
- Cut the fabric sheets apart and stack them, fabric side up, on the hooped stabilizer.

Note: A total of twenty white appliqués were used in this quilt, and all were cut in this one hooping.

- Insert the Titanium Embroidery needle into the machine and change the needle plate to the appropriate CutWork Stitch Plate for your machine. Attach Embroidery Foot #26.

Note: Although Foot #44 will be used for the cutting steps, it should not be used during the placement or basting stitching. If the designs are too close to the hoop’s edges, the size of the foot could cause it to bump against the hoop and damage the foot.

- Skip Color 1 (the placement stitch) and stitch Color 2 (the basting stitch) to secure the layers of fabric together.
- Remove the needle and insert the CutWork Accessory in its place. Attach Cutwork and Echo Quilting Foot #44 to the machine.
- Following the prompts on the machine screen, change the position of the tool as indicated until all of the white appliqué flowers are cut.

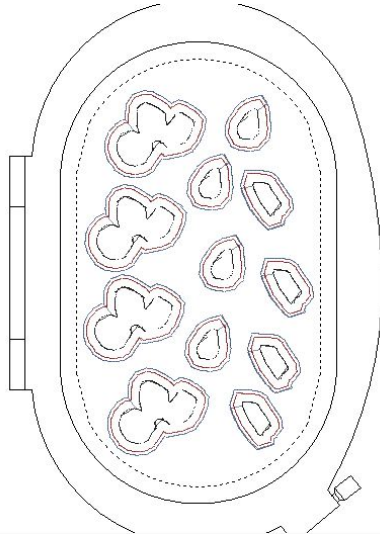


- Remove the flowers from the hoop and set them aside.

Cut the Inner Petal Appliqué Shapes

- In BERNINA Embroidery Software 6, open a *New* file.

- Follow the instructions on page 5 to insert CutWork designs #80001-13CWA02, 80001-13CWA03, and 80001-13CWA04.



- Clone (right click and drag) each design until there are four of each design. Arrange them within the hoop.

- Click the *Send to Machine* icon and send the design to your embroidery machine.
- Adhere four sheets of Appliqué Fuse & Fix to the wrong side of each of the 8" x 10" fabric scraps for the inner flowers.
- Hoop a layer of HeavyWeight Tear-Away by itself in the Large Oval Hoop and spray the top with 505 adhesive.
- Stack the four prepared fabric sheets, fabric side up, on the hooped stabilizer.

Note: A total of twelve appliqué flowers were used in this quilt, and all were cut in this one hooping.

- Follow the instructions on page 5 to cut the shapes from the colored fabrics.

Embroider the Appliquéd Flowers

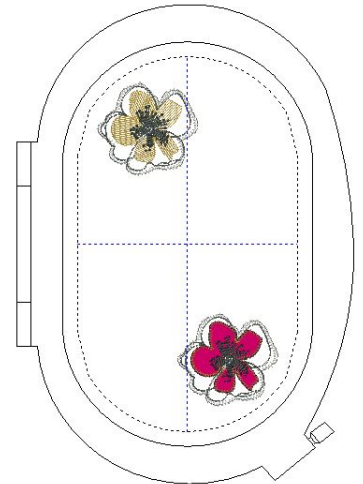
The embroidery on this quilt is randomly placed. You can combine designs directly in the editing screen of your embroidery machine, or in BERNINA Embroidery Software 6.

- In BERNINA Embroidery Software 6, open a *New* file. Select *Edit > Insert Design*. Click on design #80001-12, 80001-13, or 80001-17 and click *Open*.

- Select *Edit > Insert Design* again and insert one of the two other designs.

- Arrange the designs in the Large Oval Hoop as shown.

- Click on *Send to Machine* and send the design to your embroidery machine.



- After stitching this first set of designs, continue to randomly select two of the three designs, placing them in the hoop and sending them to your embroidery machine until the desired number of designs have been stitched.
- Spray one side of a hoop-sized piece of Ultra Clean & Tear with 505 adhesive and adhere it to the back of the quilt in the area to be embroidered.

Tip: Use the layout you created in the Quilter program as a visual guide for placing the hoop.

- Hoop the quilt top and the stabilizer as one unit. Attach the hoop to the machine and begin stitching the design.
- After stitching the appliqué placement line on any of the three designs above, peel the backing from the Appliqué Fuse & Fix on the appropriate flower (the white fabric) and position it to cover the placement line.
- Stitch the appliqué tackdown stitches.



- For design #80001-17 or 80001-12, continue to stitch the design as prompted.

Note: Isacord color #0112, Leadville, was used in place of #0020, Black.

- When stitching design #80001-13, there are three additional appliqué pieces over the white piece. Change the thread to match the color of these fabric pieces and stitch the inner petals appliqué placement lines.
- Peel the backing from the Appliqué Fuse & Fix on each of the three different shapes and place the pieces to cover the placement lines. Stitch the inner petals tackdown stitches.
- Continue stitching the design, changing thread colors as prompted.

Note: Isacord color #0112, Leadville, was used in place of #0020, Black.



- Rehoop the quilt and continue to embroider around the quilt center, varying the position of the hoop—sometimes perpendicular to the border, sometimes at an angle. Use the printed Quilter layout as a visual guide for placing the flowers.

Quilt the Layers Together

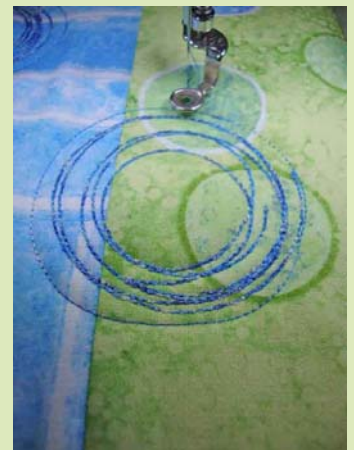
- Baste the backing, batting, and embroidered quilt top together. (Or layer the quilt on the BERNINA Quilt Frame!)
- Thread the bobbin for regular sewing and change to a size 90/14 Quilting needle. Attach the BERNINA Stitch Regulator and free-motion quilt the entire quilt, outlining the appliquéd flowers.

Quilting “In the Hoop”

You may choose to additionally quilt the layers together using designs from this collection. Flowers #80001-14, -16, and -18 were used, placed randomly in the center portion of the quilt using Isacord #0112, Leadville.



The borders were quilted using circles #80001-46 and -48 were used, placed randomly in the center portion of the quilt using Multi-colored Isacord #9605.



- To quilt in the hoop using embroidery designs:
- Hoop the three layers of the quilt as one unit. There is no need to use stabilizer.

Tip: Attach the outer ring of the hoop to the Master Hooper before hooping the quilt. The Master Hooper will hold the hoop steady as you go through the hooping process.

- Thread the bobbin for regular sewing.
- Attach the hoop to the machine and stitch the embroidery design.

Finish and Bind the Quilt

- Square the quilt and trim the layers as needed.
- Cut and piece together enough 2½"-wide bias strips to go around the perimeter of the quilt.
- Press the strips in half lengthwise, wrong sides together. Press.
- Bind the quilt using your favorite technique.

Double Binding

Use *Bias Binder #88* and *Foot #95/95C* to "bind the binding" of the quilt. This will give the look of a double binding.

- Cut and piece together enough 1⅞"-wide bias strip to equal the length of 2½"-wide bias strips. Press the seam allowances open.

Tip: For best results, stiffen the binding fabric with Best Press Starch Alternative.

- Attach *Foot #95/95C* to the machine. Position *Binder Attachment #88* so the bias feeder is aligned with the right toe of the foot. Insert the screw through the slot in the binder and into the right hole in the bed of the machine; tighten to secure.
- Feed the ⅞"-wide bias binding into the slot of the binder. Swing the binder front slightly to the right for easy feeding. Use an awl or stiletto to encourage the fabric to feed into the binder.
- Lower the presser foot and sew a few stitches. Adjust the needle position until the needle penetrates the fabric just to the right of the fold.
- Place the folded edge of the wide binding strip between the folds of the bias binding and continue stitching, making sure that the bias strip continues to flow freely into the binder.

- Align the cut edges of the binding with the raw edge of the back of the quilt. Leave a 4-5" tail at the first corner. Start stitching ¼" from the corner and proceed to stitch the double binding to the back of the quilt, mitering the corners and ending ¼" from the first corner.



- Press the binding to the front of the quilt and edge-stitch the fold to the quilt using *Edgestitch Foot #10/10C/10D*.



Tip: For more details on double binding, see www.TheQuiltShow.com > BERNINA Videos > Machine Binding with Pizzazz from July 6, 2008..

