

BERNINA
3 Series

Decorative Band Dress

Created by Linda Wenturine



Make a Swing Bag to
complement your dress.
Shown on page 3.

An easy-to-sew dress gets some added interest with decorative stitch embellishment. The bands of this dress are a great canvas to showcase the decorative stitches found on the BERNINA 380 Sewing Machine. You can choose any stitches you desire to make it your own original. This dress style is as much fun to wear as it is to make, and the BERNINA 380 is equally as fun to use!



Decorative Band Dress Supplies

- BERNINA 3 Series Sewing Machine
- Open Embroidery Foot #20
- Simplicity pattern #2886, view A
- 40 weight embroidery thread
- Embroidery needle, size 80/12
- OESD AquaMesh stabilizer
- 505 Temporary Spray Adhesive
- Spray Starch
- Chalk-o-Liner



Instructions

Cut the Fabric

- Cut out all pattern pieces as directed by the pattern instructions EXCEPT for the following "Special" pieces:
 - #2 Front Midriff
 - #15 Skirt Front Band
 - #16 Skirt Back Band

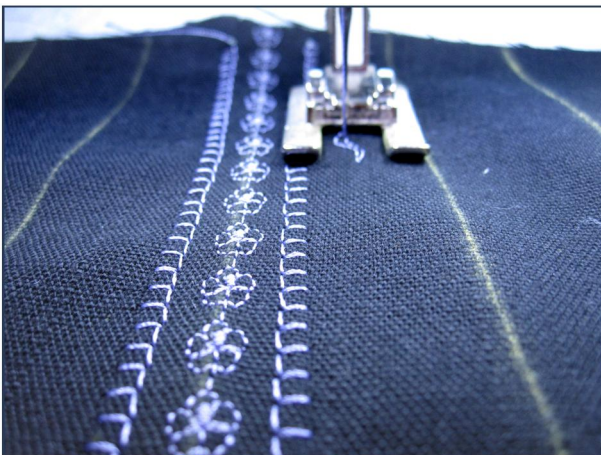
For these "Special" pieces, add 1" margins around each pattern piece. The pieces will be cut to size after the decorative stitching is completed.

Embellish the Fabric

- ◆ Starch each of the “Special” pieces of fabric, spraying and pressing repeatedly until the fabric is stiff.
- ◆ Cut pieces of stabilizer 1” larger than the “Special” pieces. Lightly spray each one with 505 Temporary Adhesive Spray and affix them to the wrong sides of each of the “Special” pieces.
- ◆ Mark vertical lines approximately 1” apart on each of the “Special” pieces. These will act as guides to help ensure that your decorative lines of stitching stay straight as you sew.



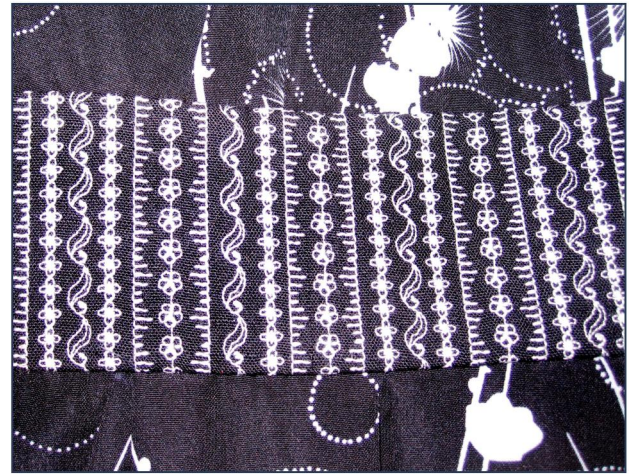
- ◆ Attach Open Embroidery Foot #20 to the machine and thread the needle and bobbin with 40 weight embroidery thread. Select stitches as desired and sew them across the “Special” pieces, using the marked lines as guides.



- ◆ When decorative stitching is complete, cut away the excess AquaMesh from the back of the embellished pieces. Immerse in water to remove the remaining stabilizer. Let dry.

Construct the Dress

- ◆ Cut the “Special” pieces using the pattern pieces.



- ◆ Construct the dress following the pattern instructions.



The Swing Bag

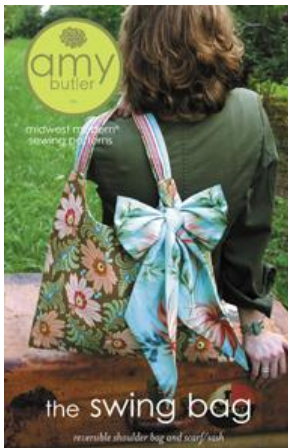
Created by Linda Wenturine

The Swing Bag is always in style. Just change the fabric to change your mood...wild animal, floral or geometric print. Be a trend-setter by mixing unexpected colors and styles of fabrics.

These easy-to-make bags are beginner-friendly, and the BERNINA 3 Series Sewing Machines make creating them oh-so-much-fun! All BERNINA 3 Series Sewing Machines are ready to handle multiple layers with ease, have great stitch control and allow your creativity to soar!

3 Series Purse Supplies

- ◆ BERNINA 380, 350PE or 330 Sewing Machine
- ◆ Edgestitch Foot #10
- ◆ "The Swing Bag" purse pattern by Amy Butler
- ◆ Fabric and notions as required by pattern



Instructions

- ◆ Cut out all pattern pieces as directed by the pattern instructions.
- ◆ *Tip:* When topstitching close to the edges, use Edgestitch Foot #10 and move the needle position to the left or right as desired. Guide the blade of the foot along the edge of the fabric as you stitch, and your stitches will be perfectly parallel to the edge of the fabric.

Visit www.berninausa.com
for additional projects and information.

