

Embroidery Project

Monkeying Around

Created by Elaine Cibelli



Finished size: 12" x 45"

Supplies

Sewing Equipment & Accessories

- BERNINA Embroidery & Sewing Machine
- Edgestitch Foot #10/10C/10D
- Patchwork Foot with Guide #57/57D
- Echo Quilting and CutWork Foot #44
- Walking Foot #50
- BERNINA Stitch Regulator #42
- BERNINA Bias Binder Attachment #88 with Foot #95 (or Bias Binder #84 with Foot #94)
- Large Oval Embroidery Hoop

Embroidery Collection

- OESD's Jungle Nursery Ensemble Signature #12337 Designs CM584, CM585, CM586, CM601, CM602, and CM604

Fabrics & Notions

- Benartex "True Blue" fabric collection - ½ yard Dot Texture Cream
- "Mackinaw Island" collection by Benartex
 - ¾ yard Geometric Orange
 - ½ yard Geometric Turquoise Blue
 - ½ yard Lil' Jacquard Pistachio
 - ¼ yard Lil' Jacquard Tangerine
 - ¾ yard Dots Tangerine
- National Nonwovens Woolfelt Squares
 - Moss, Grassy Meadows, Hazelnut, Wheat Fields
- Batting, 14" x 47"
- OESD Appliqué Fuse & Fix
- OESD HeavyWeight Tear-Away stabilizer
- Isacord Embroidery Thread
- Organ Titanium Embroidery Needle, size 80/12
- 101 Quilt Basting Spray
- 505 Temporary Adhesive Spray
- Organ Titanium Embroidery Needle, size 80/12
- Appliqué Scissors
- AccuQuilt Go (optional)

Playful monkeys romp across this adorable wall hanging, providing a cheerful accent to any play-room. Simple wool appliqué shapes from OESD's Jungle Nursery Ensemble Collection are easy to stitch by embroidery machine.

Embroider the Appliqués

- Iron OESD Appliqué Fuse & Fix to one side of the wool felt sheets.
- Spray a piece of OESD HeavyWeight Tear-Away with 505 Temporary Adhesive Spray and adhere it to the wrong side of a piece of the Dot Texture Cream fabric. Hoop the fabric/stabilizer.
- Stitch the wool appliqué following the instructions included with the embroidery collection. First stitch the placement line, then cover the outlined shape with a piece of felt.



- Embroider the tack-down and detail stitches.



- Remove the hoop from the machine and trim away the excess felt about 1/8" from the stitching using appliqué scissors.



- Repeat for all the appliquéd blocks.

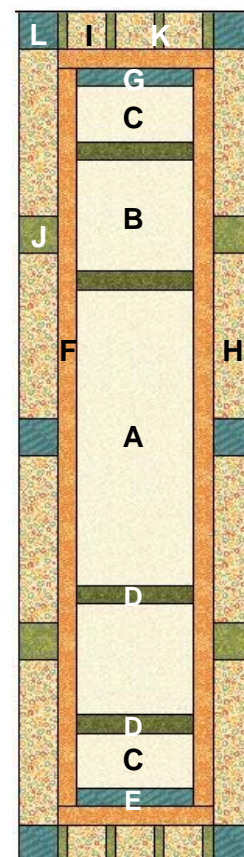
A	Cut 1	Trim to 6½" x 16½"	Dot Texture Cream	Monkeys CM 584, 585, 586
B	Cut 2	Trim to 6½" x 6½"	Dot Texture Cream	Tree CM601; Vine CM602
C	Cut 2	Trim to 4" x 6½"	Dot Texture Cream	Vine Blocks CM604
D	Cut 4	1½" x 6½"	Lil' Jacquard Pistachio	Block Sashing
E	Cut 2	1½" x 6½"	Geometric Turquoise Blue	Block Sashing
F	Cut 2	1½" x 40½"	Lil' Jacquard Tangerine	Inner Border
G	Cut 2	1½" x 8½"	Lil' Jacquard Tangerine	Inner Border
H	Cut 8	2½" x 9¾"	Dots Tangerine	Outer Border
I	Cut 6	2½" x 2½"	Dots Tangerine	Outer Border
J	Cut 4	2½" x 2½"	Lil' Jacquard Pistachio	Outer Border Squares
K	Cut 8	1½" x 2½"	Lil' Jacquard Pistachio	Outer Border "Stripes"
L	Cut 6	2½" x 2½"	Geometric Turquoise Blue	Outer Border Squares
M	Cut 4	2½" x 44"	Lil' Jacquard Tangerine	Binding
N	Cut 4	1⅞" x 44"	Lil' Jacquard Tangerine	Double Binding

Piece & Quilt the Wallhanging

- Square up all the blocks and trim them to size following the chart below.
- Attach Patchwork Foot #57/57D to the machine. Piece the blocks together following the diagram below.



- Layer the batting, backing, and pieces top, using 101 Quilt Basting Spray to hold the layers together.



- Quilt-in-the-ditch around the blocks and borders using Walking Foot #50.

- Attach BERNINA Stitch Regulator #42 to the machine. Free-motion quilt around the appliqué motifs and borders.

- Square and trim the quilt.

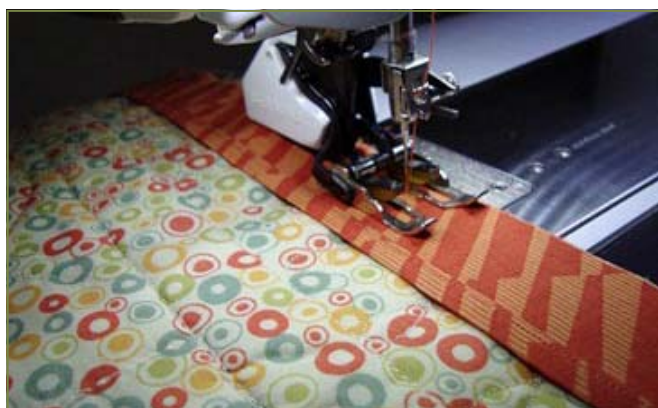


Apply the Double Binding

- Trim the ends of the 2½" strips at a 45° angle and piece them together to make a strip long enough to go around the quilt plus about 12" for mitering the corners and joining the ends.
- Fold the strip in half, lengthwise, wrong sides together; press.
- Trim the ends of the 1½" strips at a 45° angle and piece them together to make a strip at least as long as the first one.
- Attach the Bias Binder Attachment and Foot to the machine. Feed the 1½" strips into the binder and move the needle position to stitch inside the edge. Feed the folded strip into the binding so the 1½" strip wraps around the folded edge of the bias binding strip.



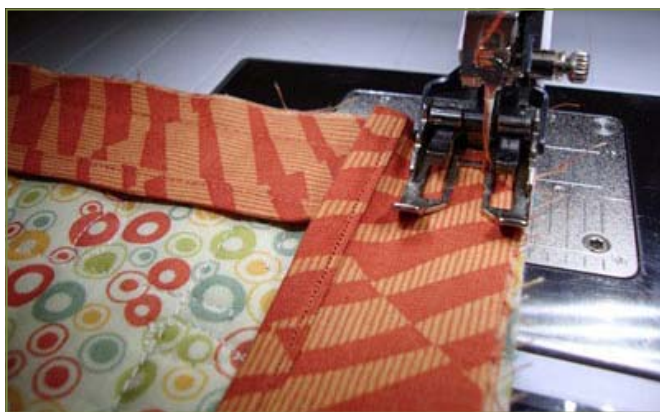
- Attach Walking Foot #50 to the machine and move the needle position to the far right.
- Attach the double binding to the wrong side of the quilt using a ¼" seam allowance. Begin at one corner leaving about a 5" tail, keeping the raw edges even.



- Stop ¼" from the corner with the needle down in the fabric, pivot, and sew off at a 45° angle.
- Fold the binding away from the quilt at a 90° angle, keeping the raw edges even.



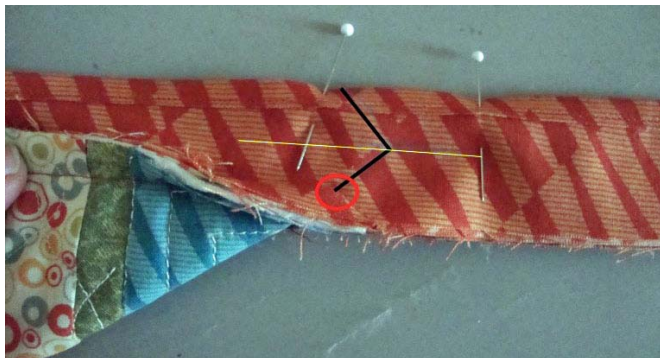
- Fold the binding back over the quilt, making the fold even with the raw edges. Continue stitching.



- Bind the remaining edges in the same manner, mitering the corners and stopping $\frac{1}{4}$ " from the first corner. Pivot and sew off at a 45° angle. Trim, leaving about a 5" tail.



- Align the folded edges and the raw edges of the tails and pin. Measure and mark a line (shown in yellow in the photo) halfway between the folded edge and the last stitch. Mark a line 45° beginning at the last stitch and ending at the yellow line. Draw another line from the yellow line to the folded edge.



- Stitch on these lines, reinforcing the stitching at the beginning and edge. Press and trim close to the stitching.
- Press the binding from the back and fold it to the front, turning out all of the mitered corners using a point presser.
- Attach Edgestitch Foot #10/10C/10D to the machine and move the needle point to the left to stitch close to the inner fold of the binding.



Visit www.bernina.com
Projects • Webinars • Promotions