

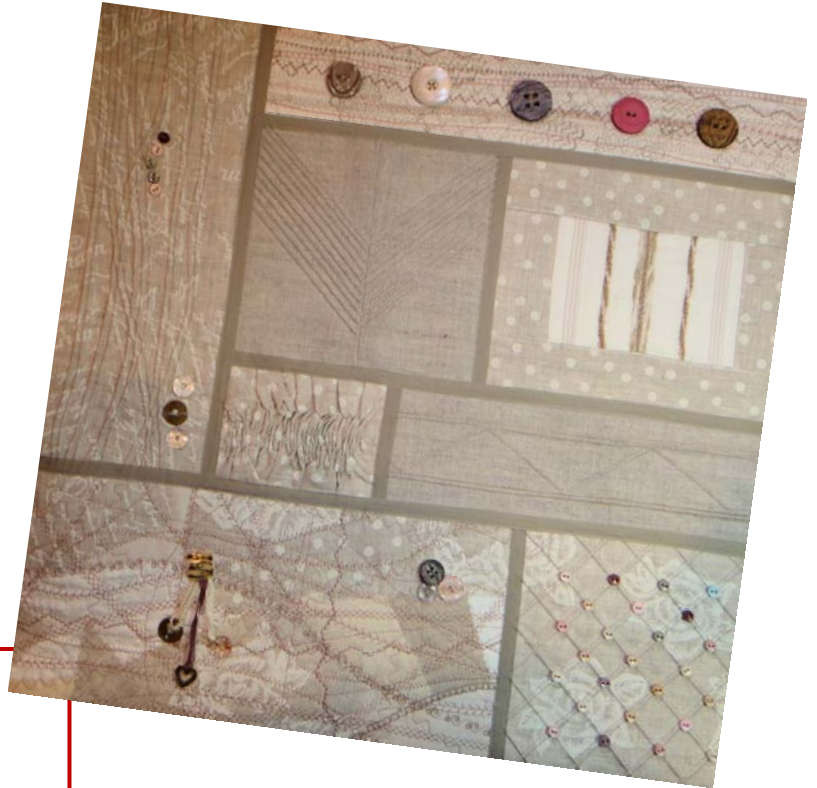
Textured Tapestry

Created by Susan Beck

BERNINA
Just SEW IT!

This small wall hanging is filled with simple techniques that create texture on fabric. Easy to make, each swatch is texturized in a unique way, then cut to a specific size. Backed with fusible fleece, the swatches are stitched together using the zigzag stitch for joining. Ribbon sashing covers the stitching and the outer edges are finished with bias binding (not shown).

Finished size: 18" x 18"



Supplies

Machine & Accessories

- BERNINA 3 Series or 5 Series machine
 - Pintuck Feet #30, #31, #32, #33*
 - Edgestitch Foot #10/10C/10D
 - Button Sew-On Foot #18
 - Clear Embroidery Foot #39/39C/39D
 - Secondary Bobbin Case
 - Extra bobbin for elastic thread
 - Best Press Starch Alternative
 - Steam-a-Seam 2 Lite— $\frac{1}{4}$ " wide
- *Directions call for Foot #30 and Foot #32 but all four (#30-33) may be used for variety*

Fabric & Notions

- Five coordinating fabrics: $\frac{1}{4}$ yard of four; $\frac{5}{8}$ yd of one to be used for backing & binding
- Coordinating ribbon, $\frac{3}{8}$ " - $\frac{1}{2}$ " wide
- OESD Fuse & Fleece
- 2.0 and 4.0 Double Needles
- Narrow cord such as perle cotton
- Cord Attachment Accessory for 8 Series
- 2 spools of polyester or cotton thread to coordinate with fabrics
- 1 spool elastic thread
- Assorted decorative buttons, charms and trinkets as desired.

Cutting & Preparation

Cut the following rectangles, using the fabrics of your choice (see placement diagram on next page):

- A: 14" x 6.5"
- B: Two, 5" x 8" each
- C: 11" x 5"
- D: 8" x 8"
- E: 8" x 8"
- F: 6.5" x 5"
- G: 15.5" x 5"
- H: 14" x 8"

Note: The rectangles will be cut to the final size after all textures have been created.

Cut the same size rectangles listed above from the Fuse & Fleece but DO NOT fuse at this time.

Cut a square of backing fabric, 20" x 20".

Cut a square of Fuse & Fleece, 20" x 20" and fuse it to the *wrong side* of the backing following the manufacturer's instructions.

Layout Diagram

A Curved Pintucks 12" x 4.5"	G Decorative Stitching with Buttons 13.5" x 3"	
	B Diagonal Pintucks 7.5" x 6"	E Couching + Pintucks 6" x 6"
	F Elastic Stitching 4.5" x 3"	C Corner Pintucks 9" x 3"
H Random Patchwork 12" x 6"		D Grid Pintucks With Buttons 6" x 6"

Note: The measurements listed above are final trimmed sizes after all texture has been created.

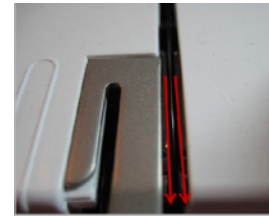
Machine Set-Up for Double Needle Stitching

Insert Double Needle into the machine.

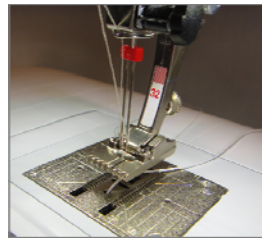
Thread the machine* for pintucks in the usual manner with the following exceptions:



2 spools:
1 vertical, 1 horizontal



One thread on each
side of tension disc



Bypass last guide
with one thread

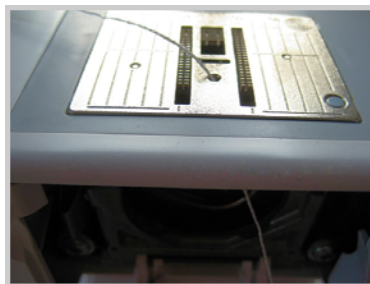
** 8 Series machines should be threaded manually—consult owner's manual*

Machine Set-Up for Corded Pintucks

Position the cord for corded pintucks using one of the following methods:

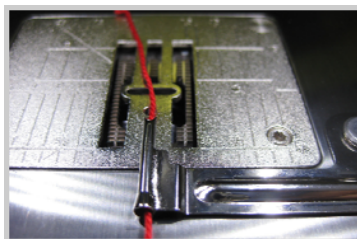
For all BERNINA machines EXCEPT for 8 Series models:

Thread narrow cord through bobbin area and up through hole in front of needle opening



For all BERNINA 8 Series models (will also fit all other models):

This attachment fits on the bed of the machine & the cord is fed through a tube so that it feeds directly under the needle.



Directions

Set up the machine as follows for creating pintuck Swatches A-E:

Thread the machine for double needle stitching following directions above. Position cord for corded pintucks using one of the methods to the left.

A—Curved Pintucks

Attach Pintuck Foot #30 to the machine; use a 4.0mm Double needle.

Press Swatch A using Best Press Starch Alternative as a light stabilizer.

Stitching along the length of the swatch, sew a free-form collection of pintucks as desired, filling the space with texture.

When pleased with the results, fuse a layer of Fuse & Fleece to the wrong side of the fabric.



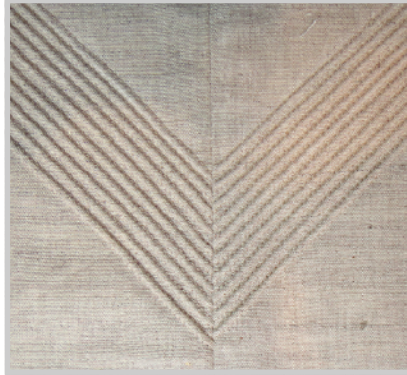
B—Diagonal Pintucks

Press Swatches B using Best Press Starch Alternative as a light stabilizer.

Mark a 45° line on each swatch.

Sew the first pintuck on the line.

Stitch 7-8 more pintucks, spacing them as desired, the same on both swatches.



Sew the two swatches right sides together using a 1/2" seam allowance to form a chevron. Press seam allowances open.

Fuse a layer of Fuse & Fleece to the wrong side of the fabric.

C—Corner Pintucks

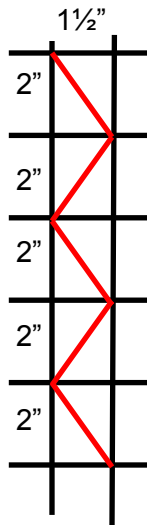
Press Swatch C using Best Press Starch Alternative as a light stabilizer.

Mark two parallel lines, 1 1/2" apart. Draw horizontal lines 2" apart across the vertical lines.



Sew a pintuck on each vertical line, then stitch a second pintuck next to it toward the inside.

Starting at the top, sew one continuous line, pivoting from side to side as shown in red.



Pivoting Directions:
Using hand wheel, raise needles barely out of the fabric, lift foot and turn 45°. Use hand wheel to complete the stitch, pivot another 45° and sew.

Fuse a layer of Fuse & Fleece to the wrong side of the fabric.

D—Crosshatch Pintucks

Re-set machine using Pintuck Foot #32 and a 2.0mm Double needle.

Press Swatch D using Best Press Starch Alternative as a light stabilizer.

Mark two 45° lines on one swatch. Sew the first pintuck on the line.

Stitch more pintucks to cover the swatch using a guide for 3/4" spacing.



Sew pintucks in the opposite direction to form a grid

Fuse a layer of Fuse & Fleece to wrong side of fabric.

**E—Pintucks + Couching**

Press Swatch E using Best Press Starch Alternative as a light stabilizer.

Measure in 3" on each side of the swatch and stitch three closely-spaced pintucks on each side.

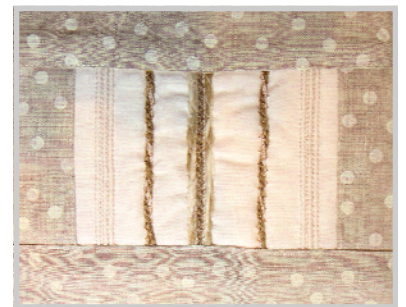
Using Braiding Foot #21/12C, couch your choice of fibers and/or yarn down the center of the swatch equidistant from each set of pintucks.

Couch two more vertical lines of fibers, one on each side of the center line.

Cut four strips of linen for borders, 2" wide. Sew the borders to each side, placing them right side down on the swatch, then flipping them right side out after stitching. Edgestitch the seam.

Repeat with the upper and lower borders.

Fuse a layer of Fuse & Fleece to wrong side of fabric.



F—Elastic Stitching

Press Swatch F using Best Press Starch Alternative as a light stabilizer.

Hand-wind elastic thread onto a bobbin. Put the bobbin into a secondary bobbin case and loosen the tension.



Use cotton or polyester thread in the needle.

Attach Clear Embroidery Foot #39/39C/39D to the machine.

Adjust the stitch length to 3mm-4mm.

Sew several parallel rows of stitching across the fabric, using the edge of the presser foot as a spacing guide.

Pull elastic thread to gather the fabric as desired.

Tip: Tie the elastic threads together at one end before gathering.



Fuse a layer of Fuse & Fleece to the wrong side of the fabric.

**G—Decorative Stitching**

Insert a Universal needle size 80/12 into the Machine; attach Clear Embroidery Foot #39/39C.

Press Swatch G using Best Press Starch Alternative as a light stabilizer.



Stamp random designs on fabric, overlapping as desired. Cover area lightly.

Fuse a layer of Fuse & Fleece to the wrong side of the fabric.

Stitching from side to side, cover the entire fabric with decorative stitches of your choice.

**H—Random Patchwork**

Press Swatch H using Best Press Starch Alternative as a light stabilizer.



Fuse a layer of Fuse & Fleece to the wrong side of the fabric.

Cut swatches of assorted fabric in various sizes and shapes. *Note: These pieces may be torn or cut using scissors, pinking shears, or rotary cutter.*

Place the swatches on the base fabric, overlapping them until the entire surface is covered.

Cover the entire surface with the decorative stitches as desired, stitching in various directions.

Note: Fabric pieces can be held in place with pins, glue stick, or temporary spray adhesive if desired.



Assembly

Cut each swatch to the exact size indicated on the diagram below and arrange the trimmed swatches in the order shown.

Attach Edgestitch Foot #10/10C/10D to the machine.

Select the zigzag stitch with a stitch width and length of 3mm.

Align the edges of blocks and zigzag them together placing the guide of Edgestitch Foot #10/10C/10D between them so they do not overlap.



Peel the paper away from the ribbon, exposing the fusible web. Position the ribbon over the seam, making sure zigzag stitching is covered. Fuse the ribbon in place, following the manufacturer's instructions.

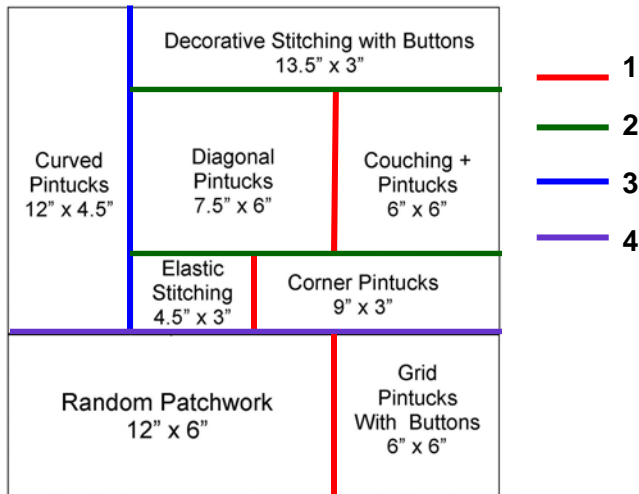


Edgestitch the ribbon in place using Edgestitch Foot #10/10C/10D with the needle position adjusted to stitch on the ribbon.



Ribbon Sashing

Position ribbon over the seams and adhere as described below. The colors in the diagram indicate the order of the ribbon placement. Complete all steps for each color before moving to the next color.



Cut each ribbon to the size indicated above.

Cut a piece of ¼" wide Steam-A-Seam to fit each piece of ribbon.

Press the Steam-A-Seam2 Lite piece to the back of the ribbon.



Embellishment

Sew on buttons and trinkets as desired using Button Sew-On Foot #18 as needed.



Finishing

Lay the fused backing right side up. Position the assembled top on the fleece, approximately in the center of the square. Use temporary spray adhesive to hold the front and back together.

Sew the front to the back, sewing along the edge of the top, through all layers. Trim the excess backing.

Cut enough 2½"-wide bias strips to make a 90" to 100" long bias strip. Seam the strips together to make one long piece.

Fold the binding in half and press. Bind the edges of the wall hanging using your favorite method, mitering the corners.