

BERNINA Embroidery Software 8

DesignerPlus



Color PhotoStitch



3D Globe Effect



Couching

More BERNINA tips and tools at:
www.bernina.com/V8

made to create **BERNINA**

BERNINA V8.0 UPDATE 1

RELEASE NOTES

JULY 19, 2017

Contents

BERNINA V8.0 Update 1 Release Notes.....	1
Introduction	1
Why this update?.....	1
Update options	1
The update process.....	1
CorelDRAW Graphics Suite SE.....	2
4K monitor display resolution.....	2
Design worksheets.....	3
Improved print worksheet layouts.....	3
Color slot numbers	4
Opening AMT70/AMT80 files	5
Hoop printouts	5
Embroidery Library.....	5
Opening recent designs	5
Design inclusions folder	5
Printing a catalog.....	6
Adding folders	6
Design thumbnail display	6
Sending multiple designs to machine.....	6
CutWork	7
CutWork border	7
Color Film	7
Changing clearance line values	8
Stabilizing runs in CutWork pieces	8
Threads	8
Showing thread details	9
Selecting thread colors	9
Hoops	9
Series 7 Jumbo hoop	9
New hoops	10
Multi-hooping registration marks	10
Hooping Sequence printout.....	11
Saving hoop settings to template	12
Output	12
Saving EMB designs	12
Sending designs to machine	13
PES formats and trims	13
Miscellaneous	13
Improved Artistic View.....	13
Implicit and explicit trims	13
Improved Knife tool	13
Start/end points in zigzag outlines.....	14
Combining designs with buttonholes	14
Inserting artwork.....	14
System improvements	15
Appearance of dockers	15
Zoom and 'Snap to' dropdowns in Art Canvas	15
Installation improvements.....	15
USB stick features and functions	15
Languages	16
German interface.....	16
Other languages.....	16
BERNINA V8.0 Update installation notes.....	17
Before you start.....	17
Administrator rights	17
Update Windows with the latest service packs.....	17
Internet browser & internet connection.....	18
Anti-virus software	18

Update Adobe Reader.....	18
Installation procedure.....	19
Start update process	19
Automatically	19
Manually	19
Download file	19
Start installation	20
Select setup type	20
Select products to uninstall	21
Start installation	21
Uninstall CorelDRAW Essentials X6	22
Install of CorelDRAW Graphics Suite SE	23
Install of V8.0T update	23
Restart computer	24
Software update completed.....	24
Start V8.0T software.....	24
Register CorelDRAW	25
Confirm Corel account to complete Corel installation	25
FAQs	26
Manuals and release notes not accessible	26
Corel error message.....	27
Time-out error.....	27
ADX Error Message – Direct Connect.....	28
Missing Clipart folder.....	28
ADX Output – EConPC	28
Windows blocks .exe application.....	29
License transfer	30
EULA update	30
Solving problems in BERNINA V8.0.....	30
Getting help	31
Copyright	31
Contact	31

BERNINA V8.0 Update 1 Release Notes

This document contains notes on the BERNINA V8.0 Update 1. The update is intended for installation with any released version (already installed) of BERNINA Embroidery Software 8.

Introduction

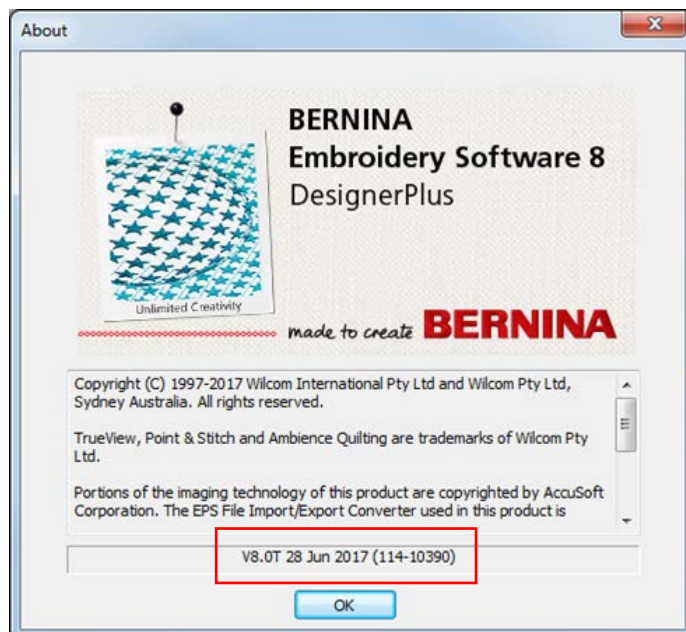
Why this update?

- To be fully compatible with Windows 10
- To support 4K / UHD monitors
- To allow users to transfer the license from one computer to another
- To update CorelDRAW to the latest version

Update options

Various update options are available for your embroidery software:

- If you already have BERNINA V8.0 installed, simply connect your computer to the internet. Every time you run the software, it will check for updates and prompt you accordingly. Or, run the 'Check for Updates' command from the Help menu.
- Alternatively, you can download the latest installation in its entirety from the BERNINA website. Or you can download an update installation if you already have BERNINA V8.0 installed. Once the download has completed, follow the installation procedure.
- If you are new to BERNINA V8.0, you will receive a USB drive installation kit with the complete installation, including the latest update.
- Once installation is complete, you will need to restart your PC for all changes to take effect.



Tip: Check your Help > About to make sure you have the latest update installed. The date may differ in your particular installation, but the version number needs to be V8.0T.

The update process

The update process is as follows:

1. First, check your anti-virus settings and put BERNINA folder (C:\Program Files (x86)\BERNINA) into the exception list so that the V8 update installation will not be blocked. If you don't know how this works, please check the support page of your anti-virus software manufacturer.
2. Second, start your V8 Bernina software and wait until the automatic Update Available window pops up. Click 'Yes' to start the download and installation. Note that the file size is 1.3 GB and the download may take a while. Your product key is automatically recognized and does not need to be entered again.
3. Third, the installation will start automatically. Leave everything checked as per default. During the installation you are prompted to uninstall CorelDRAW Essentials X6. Tick the box to remove it as it is replaced by its successor, CorelDRAW Graphics Suite SE.

Important: When you first start the new Corel or Artwork Canvas in Bernina V8, you have to register to be able to use it. For this, an active Internet Access is required. When you have completed registration, Corel sends a confirmation email. You need to click the link to validate your account. Now you are able to access the Artwork Canvas in your Bernina software. Please note that all clipart is now located in CorelCONNECT.

For a detailed description of the entire process, please refer to the [Installation procedure](#) below. See also the [FAQs](#).

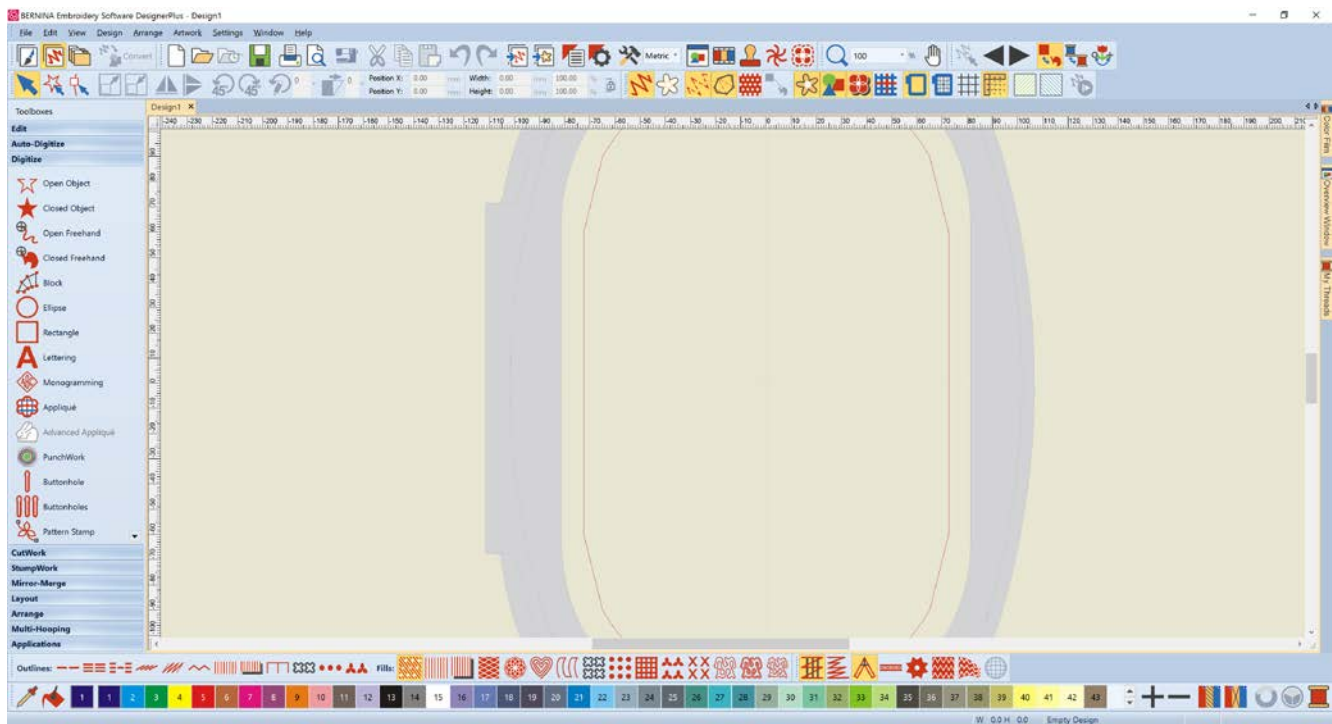
CorelDRAW Graphics Suite SE

CorelDRAW Essentials X6 has now been replaced by CorelDRAW Graphics Suite SE. This is available both for new customers and for existing customers who already bought the latest version. This update provides a major increase in functionality, as well as compatibility with Windows 10. The main differences are:

- Full feature PowerTrace of bitmaps included, not just Quick Trace.
- Full set of file import/export formats.
- Corel Clipart resources are now located online under 'Corel Connect'.
- Enhanced Knife tool.

4K monitor display resolution

BERNINA V8.0 Update 1 provides ongoing improvements in support for 4K resolution monitors. These include much better visibility for tool icons in the main application. Some problems with dynamic resizing of dialog boxes have not been fully resolved as yet. Ancillary applications such as Cross Stitch and Quilter are not currently optimized for 4K resolution.



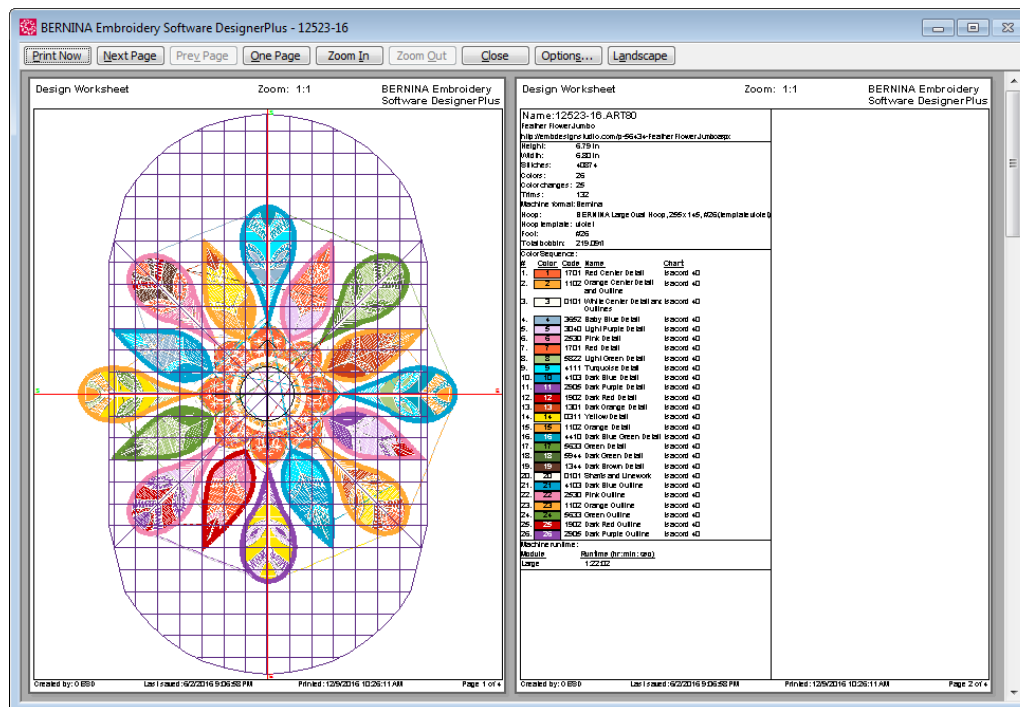
Note: The ADX machine connection function has also been improved to support 4K resolution and the sending of multiple designs.

Design worksheets

BERNINA V8.0 Update 1 provides a number of important improvements to design worksheets.

Improved print worksheet layouts

Design Worksheet layout has been improved as shown:



Element	Improvement
Page header	Shows 'Design Worksheet' at the left, 'Zoom Scale' label and percentage value in the middle, 'BERNINA Embroidery Software' at the right.
Zoom Scale	Will be the same as the one set for the Design Worksheet in the Print Options dialog.
Page footer	Shows Author, Date Modified, Date Printed, Page [Number] of [Total Pages]
Body	Shows design information, color sequence, thread/cord usage, and machine runtime at the left column, and design graphics and other optional images at the right. If the left list is too long to be displayed in one column, it is auto-split into multiple column(s) in the same page.
For Color Sequence	<ul style="list-style-type: none"> Up to 20 characters can be displayed in one line for color name and chart name. If a long color name or chart name cannot fit into a single line, it will be split into multiple lines without, however, splitting a whole word. For a color, if Couching is on, the color block is shown in two lines, with the second line showing 'cord'.
For Thread Usage	<ul style="list-style-type: none"> This section will only be displayed when the newly added 'Thread usage' checkbox is checked in the improved Print Options dialog. Total thread will be automatically calculated and displayed next to the section label. Sequence is defined in the color slot number ascending order.
For Cord Usage	<ul style="list-style-type: none"> This section will only be displayed when the newly added 'Thread usage' checkbox is checked in the improved Print Options dialog. Total cord will be automatically calculated and displayed next to the section label. Sequence is defined in the color slot number ascending order. CS# is the same as the one shown in the Color Sequence list.
For Machine Runtime	This section will only be displayed when the newly added 'Machine runtime' checkbox is checked in the improved Print Options dialog

Note: Other worksheets will use the same header and footer information as in the Design Worksheet, with the exception of Zoom Scale:

- Zoom Scale will be fixed to 100% in Applique Patterns Worksheet.
- Zoom Scale will not be available in the Color Film Worksheet and Hooping Sequence Worksheet.

Color slot numbers

Color slot numbers in the Palette were previously incorrectly displayed in the Color Sequence and Thread Sequence sections of the Design Worksheet. This issue has been resolved.

Color Sequence:

#	Color	Code Name	Chart
1	0	2580 Shell Sections	Isacord 40
2	1	0640 Shell Section Fades	Isacord 40
3	2	0015 White Stripes and Overlay	Isacord 40
4	3	2220 Light Stripes	Isacord 40
5	4	4430 Dark Stripes	Isacord 40
6	5	4240 Light Stripes	Isacord 40
7	6	1725 Outlines	Isacord 40

Thread Usage: 34.49m

#	Color	Name	Length
1	0	Shell Sections	6.71m
2	1	Shell Section Fades	7.50m
3	2	White Stripes and Overlay	1.42m
4	3	Light Stripes	3.00m
5	4	Dark Stripes	3.13m
6	5	Light Stripes	0.69m
7	6	Outlines	12.05m

Cord Usage: 0.00m

CS#	Color	Diameter	Length
-----	-------	----------	--------

Opening AMT70/AMT80 files

Also, software crashes were reported when opening AMT70/AMT80 files and invoking Print Preview. This issue has been resolved.

Hoop printouts

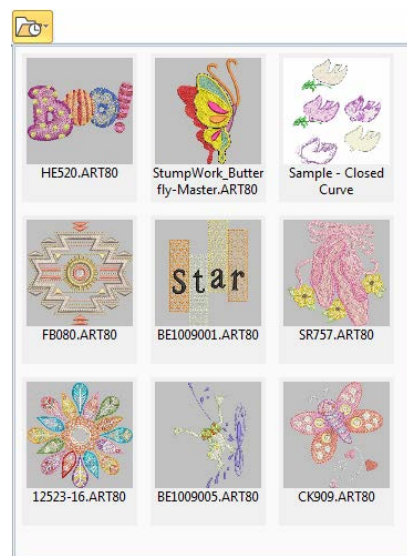
There are also new print options for multi-hooped designs. The Hooping Sequence printout has also been improved. See Hoop section below.

Embroidery Library

BERNINA V8.0 Update 1 provides a number of important improvements to the Embroidery Library.

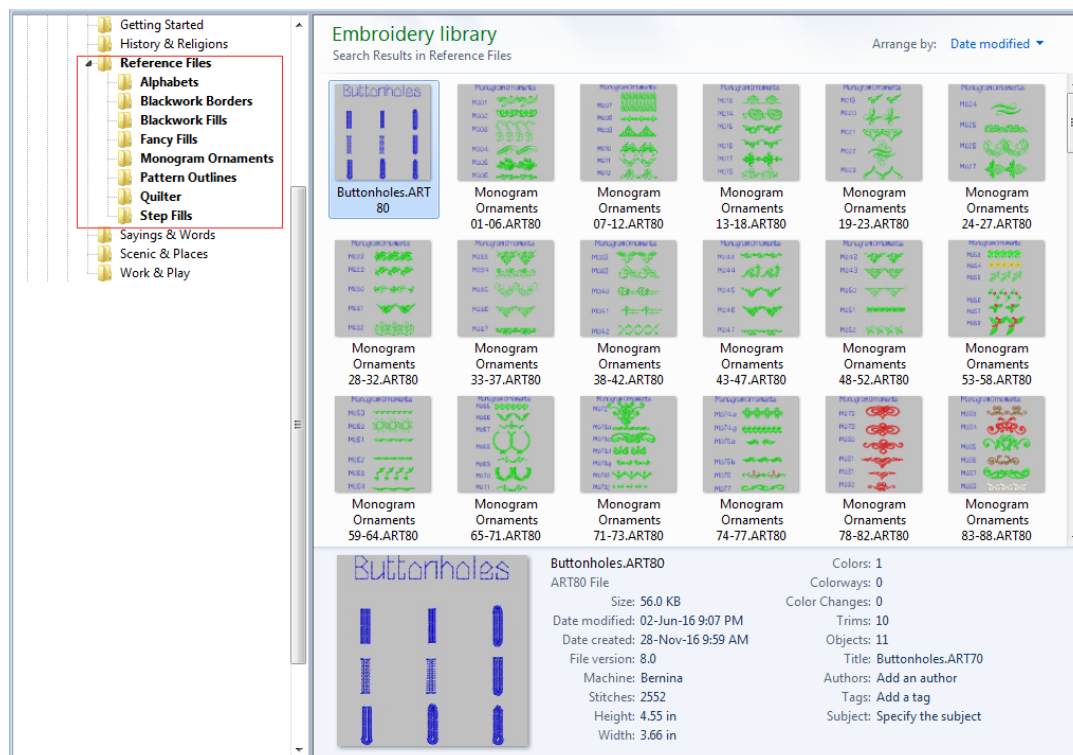
Opening recent designs

A new **Open Recent Designs** function has been added to the **General** toolbar.



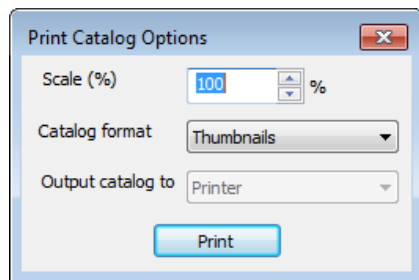
Design inclusions folder

Reference file folders have been re-organized for easier use.



Printing a catalog

When printing a catalog in Embroidery Library, you were previously returned to embroidery mode. You are now returned to library mode.

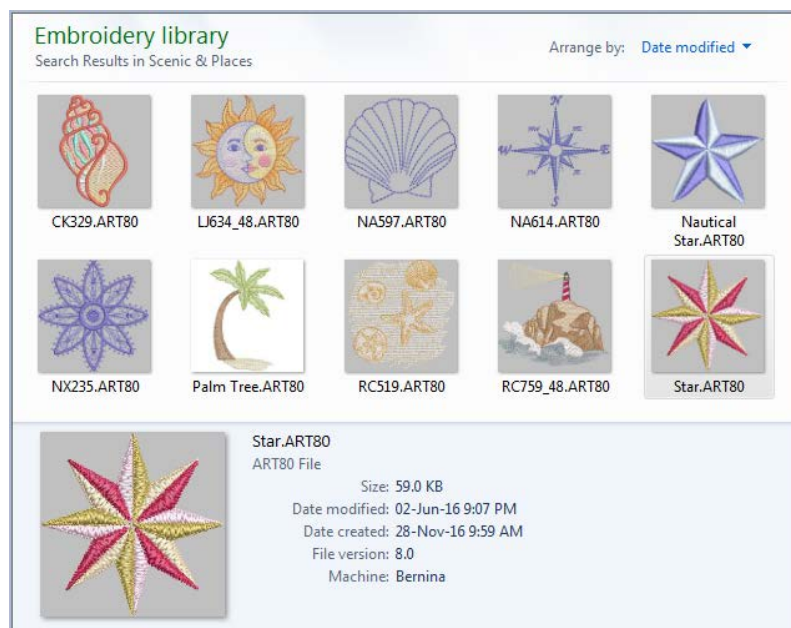


Adding folders

Previously, the 'Add Folder to Library' was not displaying folder contents correctly. The contents would only appear if the software was closed and reopened. This issue has been resolved.

Design thumbnail display

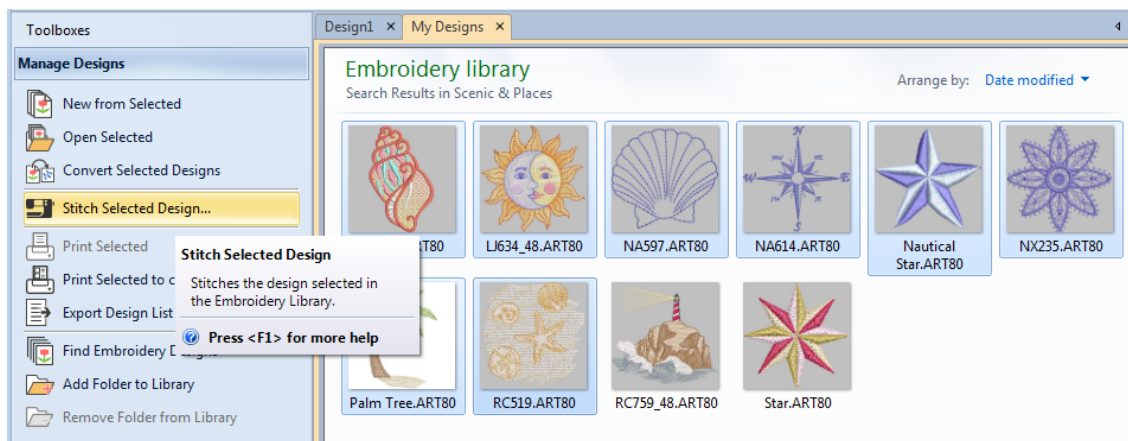
Thumbnail display has been improved. All supported file types are now assigned and appear correctly in Embroidery Library and Windows Explorer. Stitch information, however, is only displayed for native formats, such as ART, EXP, EMB or JAN.



Note: Subject to your current settings, some stitch file thumbnails cannot be displayed as the file might be associated with another application.

Sending multiple designs to machine

It is now possible to send multiple designs to machine from the Embroidery Library. Previously, you could only send one at a time.



CutWork

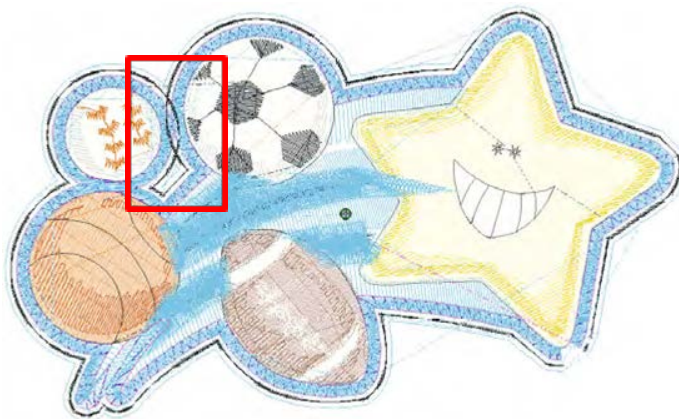
BERNINA V8.0 Update 1 provides a number of significant CutWork improvements.

CutWork border

Problems have been reported in some designs in relation to cut lines in CutWork borders crossing each other. This issue has been resolved.

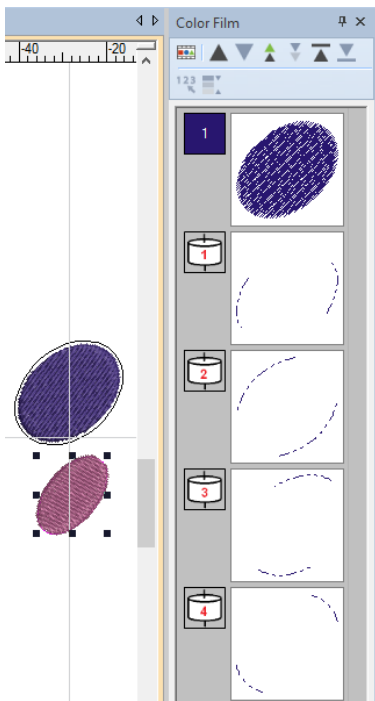
Before...

After...



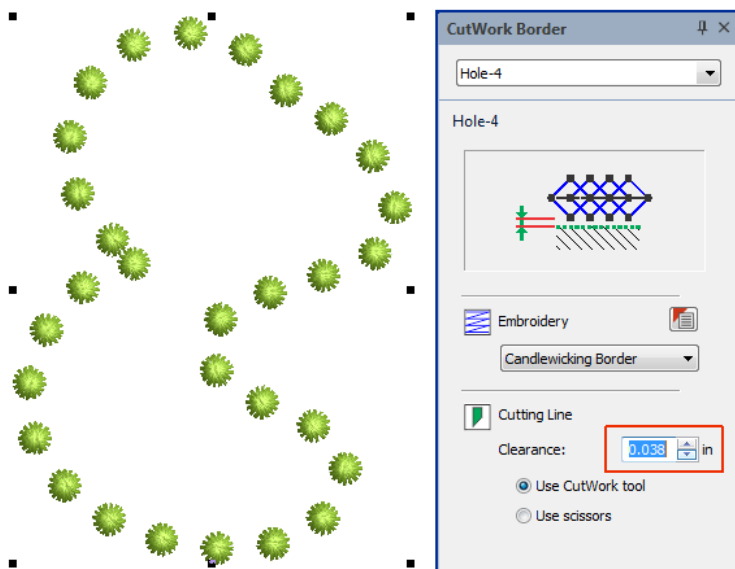
Color Film

Problems have been reported with the display of color nodes in the Color Film docker on creating objects after inserting a cutting border. This issue has been resolved. The blade position of the CutWork tool is displayed clearly in the Color Film.



Changing clearance line values

When creating cutwork holes using pattern run, candlewicking or blackwork borders, previously the clearance line value could not be modified. This issue has been resolved.



Stabilizing runs in CutWork pieces

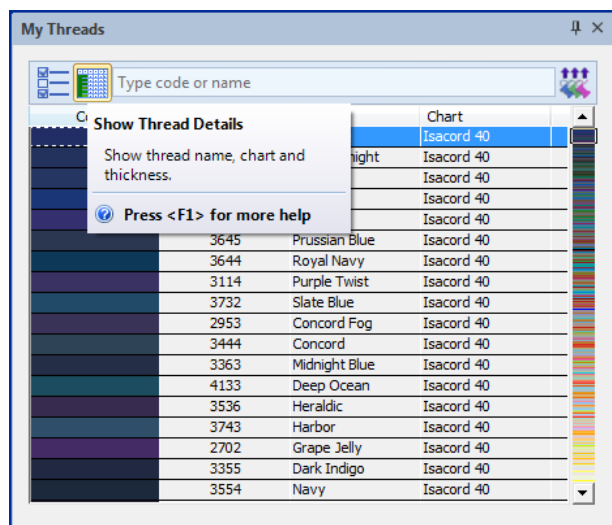
Problems have occurred when changing stabilizing run 2 properties in CutWork pieces. This issue has been resolved.

Threads

BERNINA V8.0 Update 1 provides a number of improvements in thread handling.

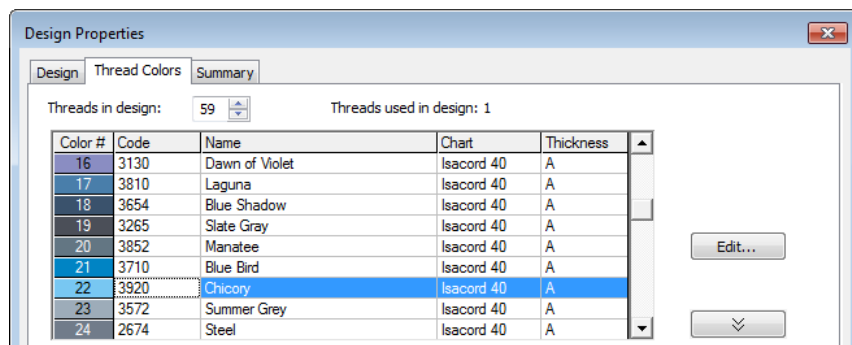
Showing thread details

When you click 'Show Thread Details' in 'My Threads', the docker now expands automatically to accommodate the chart. In this mode, the docker can only be enlarged. To make it smaller, details must be turned off.



Selecting thread colors

When selecting colors in the Design Properties > Thread Colors tab, the list used to scroll back to the top. This issue has been resolved.

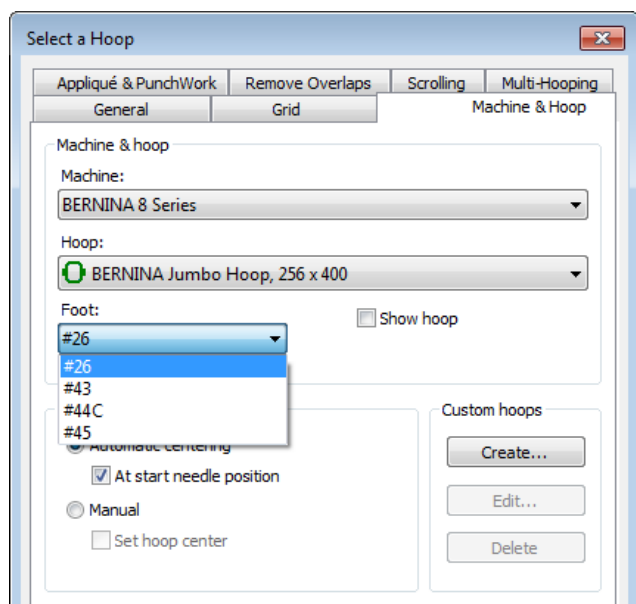


Hoops

BERNINA V8.0 Update 1 provides a number of hooping improvements.

Series 7 Jumbo hoop

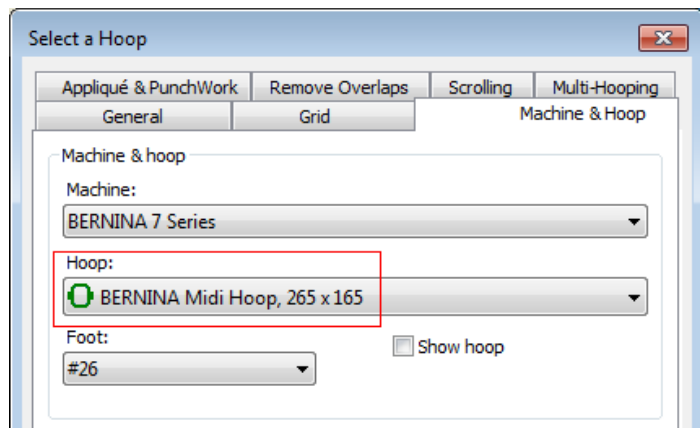
The series 7 Jumbo hoop was previously listed twice in some languages. There is now only one entry with the ability to select foot #26, #43, #44C, #45.



Also, access violation errors were reported when entering the Hoop dialog after sending designs to A200/A730. This issue has been resolved.

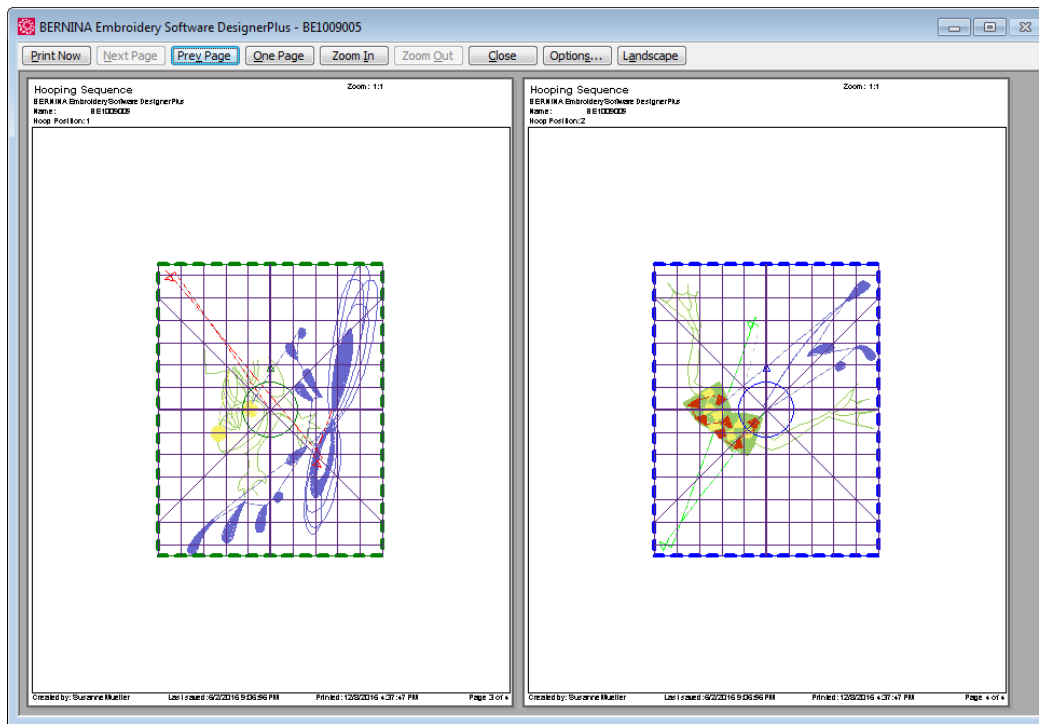
New hoops

A BERNINA Midi hoop (265x165) has been added for 5, 7 and 8 series machines. In addition, a 24 cm Square Hoop has been added for the BERNINA E16 machine.



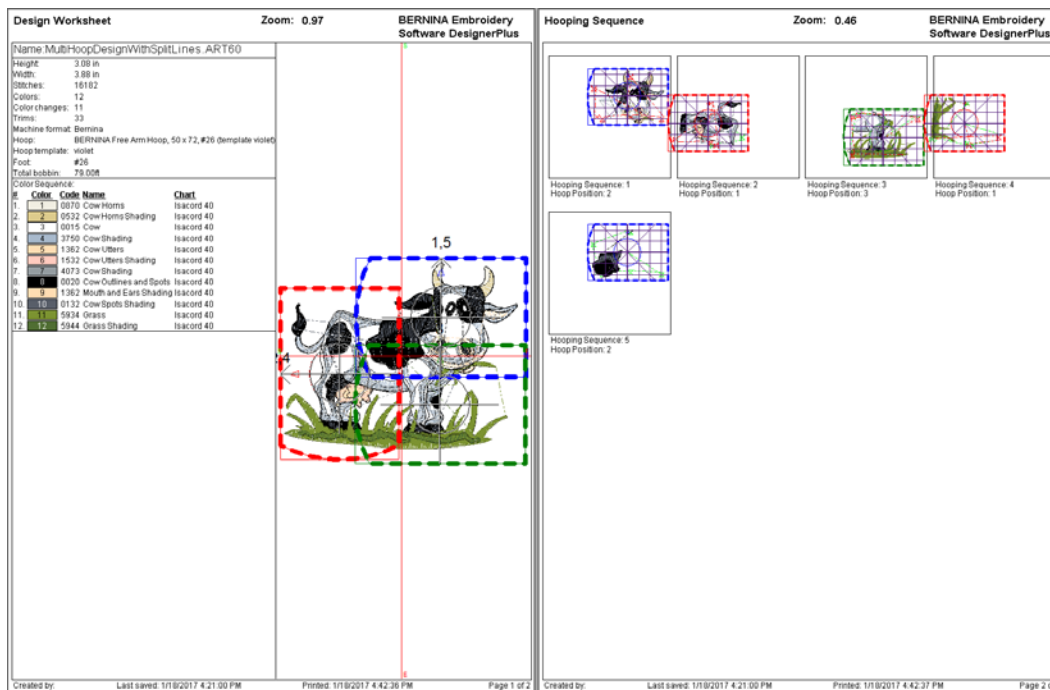
Multi-hooping registration marks

Previously, there was no way to see registration marks without opening output files individually. There are no registration marks until you actually export the design. It was possible to print the hooping sequence, but only as thumbnails. The hooping sequence (Print Options) in the design worksheet can now be printed at 1:1 with each hooping on a separate page or multiple pages for larger hoops.

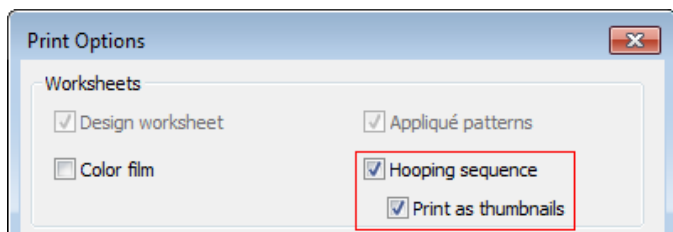


Hooping Sequence printout

The Hooping Sequence printout has been improved showing a much smaller line thickness around the stitching area.

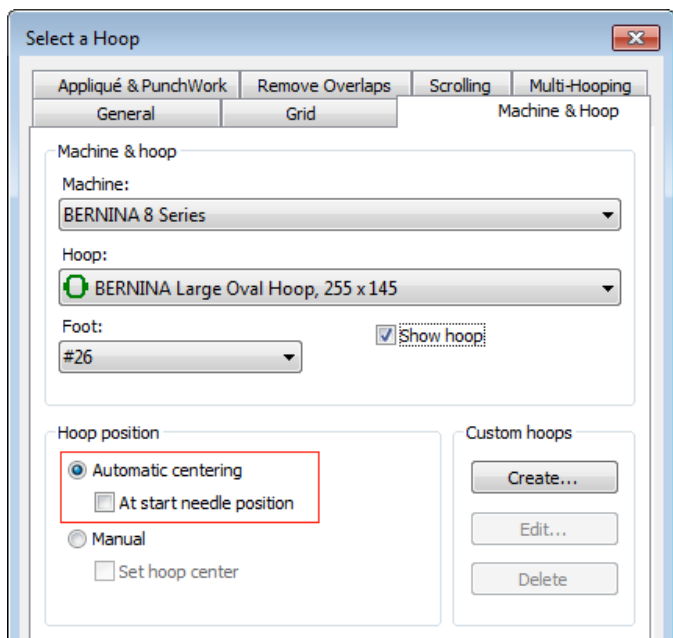


Newly added checkboxes in the **Print Options** dialog are provided to print out hooping sequence at 1:1 resolution or as thumbnails.



Saving hoop settings to template

Previously, the 'At start needle position' setting could not be unchecked and saved as a default in the template. This field, for instance, has to be unchecked for multi-hooping, where start and end of the needle position is at the first and last stitch of the design. It is now possible to save this setting to the NORMAL or any custom template.



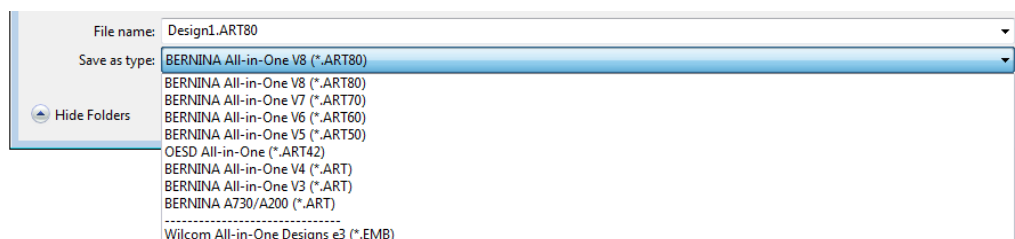
Output

BERNINA V8.0 Update 1 provides the following design output improvements.

Saving EMB designs

EMB is an 'outline file' format native to Wilcom professional software. EMB designs contain a complete set of design information in a single 'all-in-one' file – object outlines and properties, actual stitches and machine functions, thread colors, a picture icon, summary information, and more. Even the original design bitmap image can be included in EMB format. Native EMB files provide 100% perfect scaling and transformation.

The greatest advantage of the 'all-in-one' EMB format is compatibility and 'exchangeability'. Now it's possible to exchange formats between Wilcom professional software and hobbyist BERNINA software.



EMB files saved from BERNINA V8 in 'EMB e3' format can be opened in Wilcom professional e3 software as 'native' EMB files. Any design created in Wilcom professional e3 software and saved to EMB e3 format can likewise be opened in BERNINA V8 as ART Grade A, even if the design contains features, such as curved fills, not available in BERNINA V8 software.

Sending designs to machine

A problem was reported when sending certain files to machine. The file name was not displayed as expected. This issue has been resolved.

PES formats and trims

Problems have been reported when saving PES V10 files from BERNINA V8. Not all trims were shown in the brother PE Design 10 software. This issue has been resolved.

Miscellaneous

BERNINA V8.0 Update 1 provides a number of other improvements.

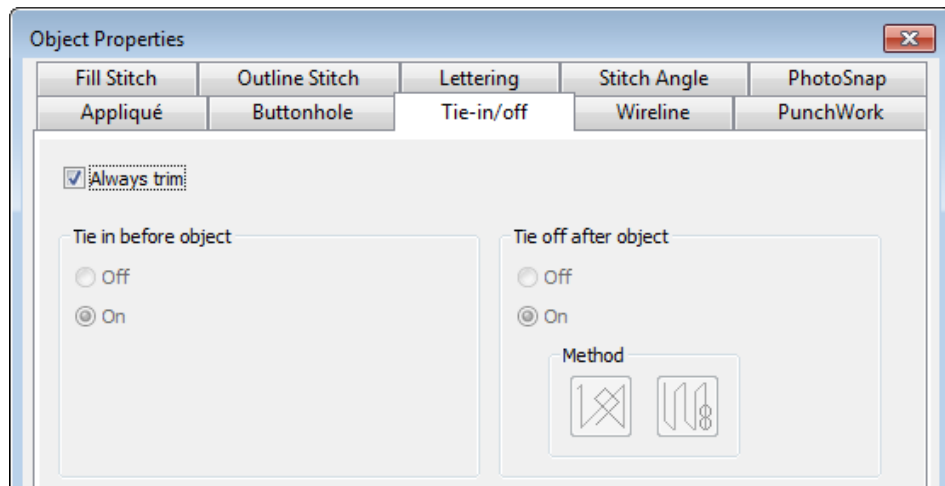
Improved Artistic View

Untrimmed connectors now appear in Artistic View exactly as they would be stitched on the machine. This makes editing easier since you can see both intended and unintended effects.



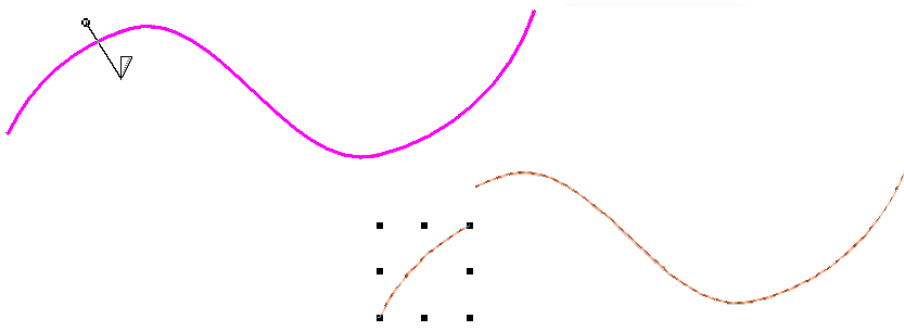
Implicit and explicit trims

BERNINA V8 differentiates between 'implicit trims' and 'explicit trims'. Implicit trims are automatically added to output files when connector stitch length is greater than 2 mm. This applies to connectors between objects and within lettering objects. If you want to explicitly trim connectors, apply 'Always trim' in the Object Properties > Tie-in/off tab to selected objects or the entire design. This now works for lettering as well as other objects.



Improved Knife tool

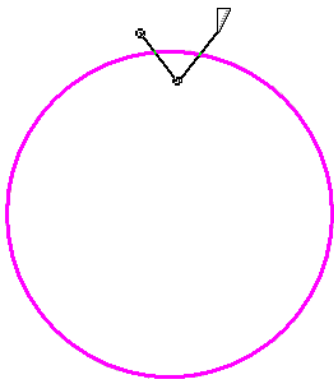
Knife tool operations have been improved. It is now possible to cut single outlines with the Knife tool.



Also, when using the Knife tool with blanket outlines, object stitching was reversed. This issue has been resolved.

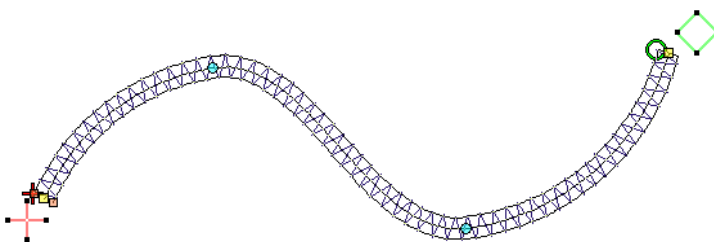


You can also use the Knife tool to cut closed objects as shown. When cutting open a closed object, you define first the two cut points and then select and delete the section you want removed.



Start/end points in zigzag outlines

Swapping start and end points in zigzag outlines previously resulted in a travel run. This issue has been resolved.



Combining designs with buttonholes

When combining two designs with one containing buttonholes, two colors were assigned to the one Color Film block. This issue has been resolved.

Inserting artwork

An intermittent problem has occurred when inserting certain PNG image files into Artwork Canvas. The image has sometimes failed to appear properly. This issue has been resolved.

System improvements

BERNINA V8.0 Update 1 provides a number of important system improvements.

Appearance of dockers

New dockers included with the release of BERNINA V8.0 appeared somewhat different in style to the old V7 dockers. All dockers now use the same style.



Zoom and 'Snap to' dropdowns in Art Canvas

Problems have been reported with Zoom and 'Snap to' dropdowns in Art Canvas. This issue has been resolved with the new CorelDRAW Graphics Suite SE.

Installation improvements

Product installation has been improved as follows:

- 1) With this update, the software activation process is more stable and robust even if aborted. A new progress bar shows the status of the activation.
- 2) Automatic Product Key recognition when updating. You do not need to enter a product key when updating since this is already saved on the PC.
- 3) The installation procedure automatically checks your PC for any installed Trial Version. If it finds one, you will be prompted to de-install the Trial before installing the Full Version. In the same step you can also de-install the CorelDRAW Essentials X6. BERNINA recommends that you remove both the Trial and CorelDRAW Essentials X6 to make room for the new software and CorelDRAW Graphics Suite SE. Only de-install CorelDRAW Essentials X6, however, if it is not used by another application.
- 4) The Sentinel HASP dongle driver has been updated. The new driver resolves issues with Windows 10 Anniversary Edition which interfered with the efficient running of the software.

USB stick features and functions

The installation USB stick has two drive partitions:

- The first drive is read-only. It contains the Update 1 installation and appears as a DVD-drive.
- The second drive is a storage device to save designs and the Update 1 installation backup file.

BERNINA Updater downloads files to this location on your hard drive:

C:\Program Files (x86)\BERNINA\Embroidery Software 8\PkgCache\Download\XX.X.XX.XXXXX

You can access the folder and copy it as a backup wherever you wish, including your USB installation stick.

Languages

German interface

With this update, the German language software interface has been improved with more precise terminology and elimination of ambiguities and inconsistencies. Height and Width units did not appear correctly in the German 'Transform' toolbar when changing measurement units. This issue has been resolved.

Other languages

Dutch, Spanish and Russian language user interfaces are now available in BERNINA V8.0.

BERNINA V8.0 Update installation notes

The BERNINA V8.0 Update installation program is designed for Web distribution. Installation is fully automated. If you have any problems with the installation, please contact your BERNINA dealer.

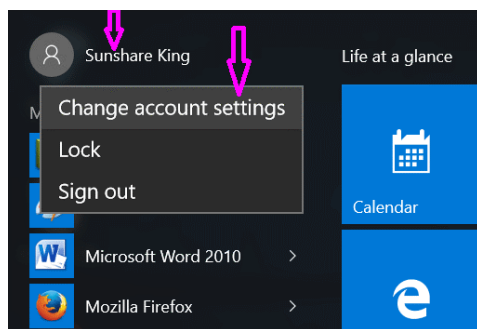
Before you start

In Windows 10 many things and settings have changed. And this is why you have to update all programs that are interlinked with the V8 software, such as internet browser or Adobe Reader.

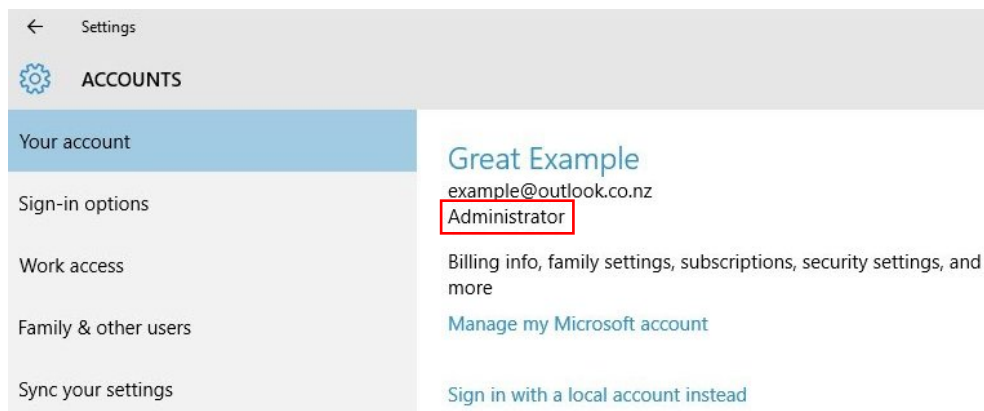
Administrator rights

To install the software you must have administrator rights. For Windows 10:

1. Click on the *Start* button, the Start Menu will pop up. See below.
2. Right-click the name of the current account, then click *Change account settings*.

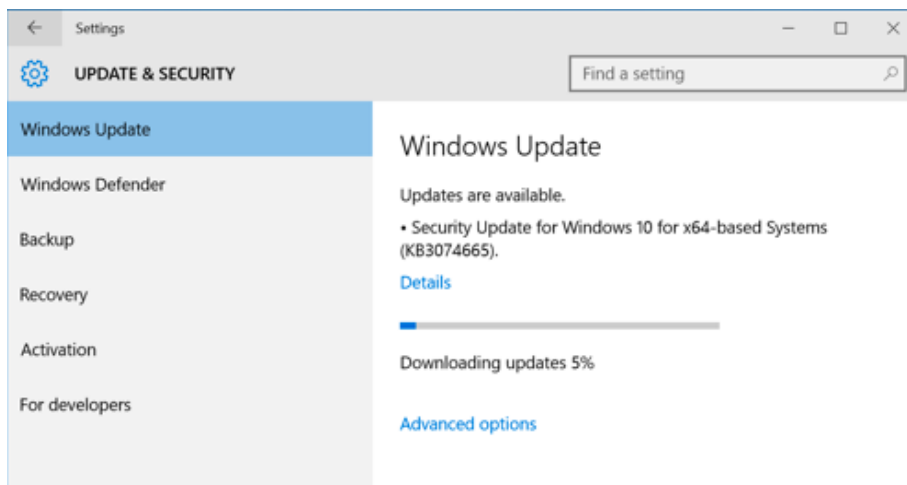


3. The *Settings* window will pop up. Under the account name, the word '*Administrator*' indicates you have an Administrator account.



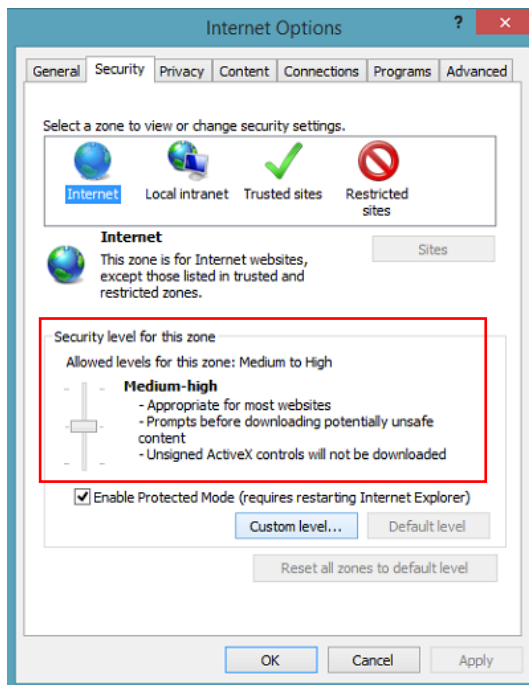
Update Windows with the latest service packs

Make sure to have an up-to-date Windows operating system to ensure flawless installation. For this, go to *Settings* and click on *Windows Update*.



Internet browser & internet connection

You have to set your browser security settings to medium so that it does not block the automatic download. Go to: *Extras (Alt X) > Internet Options (t) > Security tab* and set the security level to medium-high.



Anti-virus software

Check your anti-virus settings and put BERNINA folder (C:\Program Files (x86)\BERNINA) into the exception / exclusion list so that the V8 update installation will not be blocked. If you don't know how this works, please check the support page of your anti-virus software manufacturer.

Update Adobe Reader

Make sure to have updated your Adobe Reader to the latest version.

Installation procedure

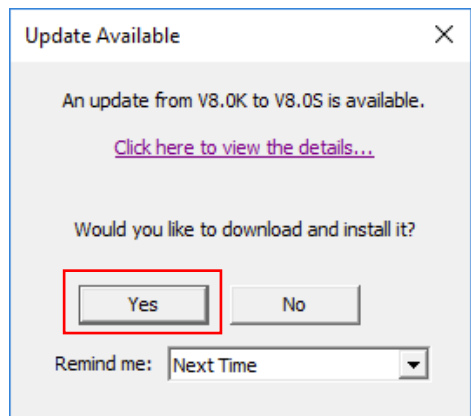
V8 update is quite a complex installation as the existing Corel version gets replaced by a new Corel version. When running the software for the first time, you need to have an internet connection to register the new Corel. Therefore, please read the instructions below carefully.

Start update process

You can get the update in one of two ways: automatically or manually.

Automatically

Your PC is connected to the internet. Go to *Help > Check for Updates* or an automatic pop-up appears, when you start the software, see below:



The hyperlink shows the release notes and by clicking the Yes button, you start the download.

The BERNINA Updater downloads files to this location on your hard drive:

[C:\Program Files \(x86\)\BERNINA\Embroidery Software 8\PkgCache\Download\XX.X.XX.XXXXXX](C:\Program Files (x86)\BERNINA\Embroidery Software 8\PkgCache\Download\XX.X.XX.XXXXXX)

You can access the folder and copy it as a backup wherever you wish, including to your USB installation stick. The file name is:

[!\[\]\(6a9b39b98eb945faa14c645ec99e4eaa_img.jpg\) BERNINA_V8_0K_to_V8_0T_Update.exe](#)

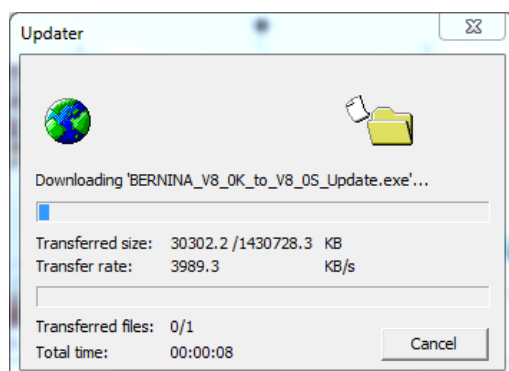
Manually

If the automatic download is not working, please download and install V8.0T from the link below.

https://d12nm3xxr05nu8.cloudfront.net/BERNINA_V8_0K_to_V8_0T_Update.exe

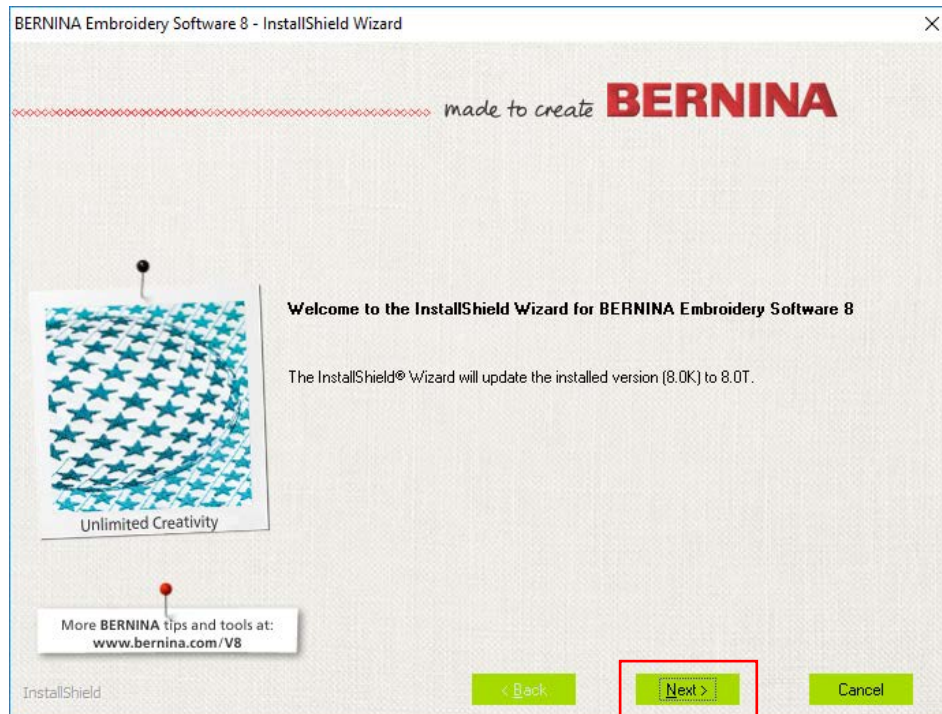
Download file

The file is 1.3 GB in size and will take about 10 minutes to download, depending on internet speed. Do not interrupt the download.



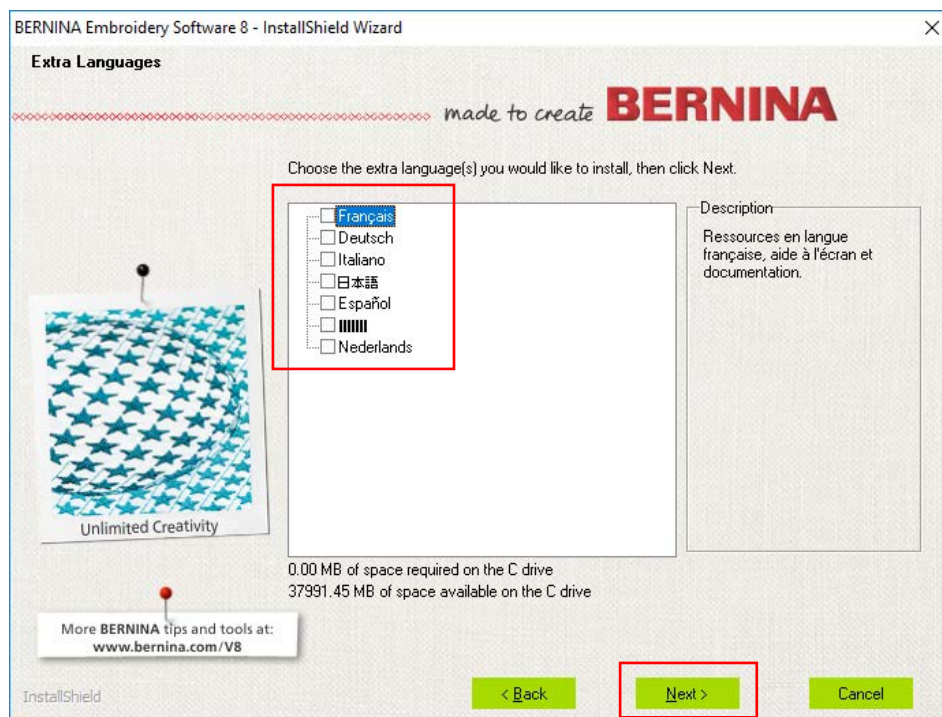
Start installation

When the download has completed the install wizard starts. Click *Next>* to start the installation.



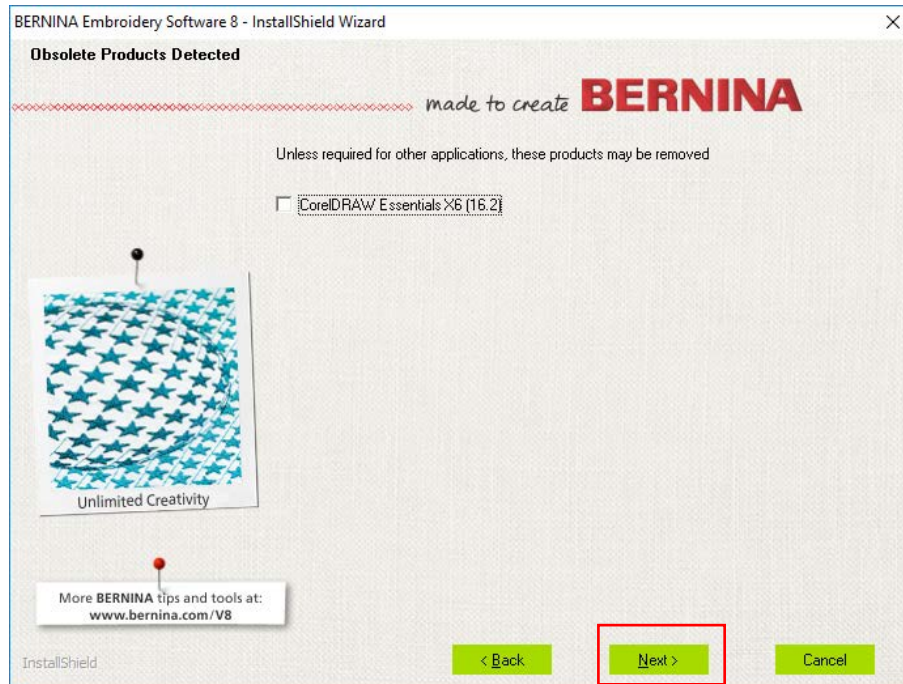
Select setup type

Once you have accepted BERNINA's and Corel's 'End User License Agreement', you are prompted to choose the setup type. Select 'Complete installation'. Leave all boxes checked as per default.



Select products to uninstall

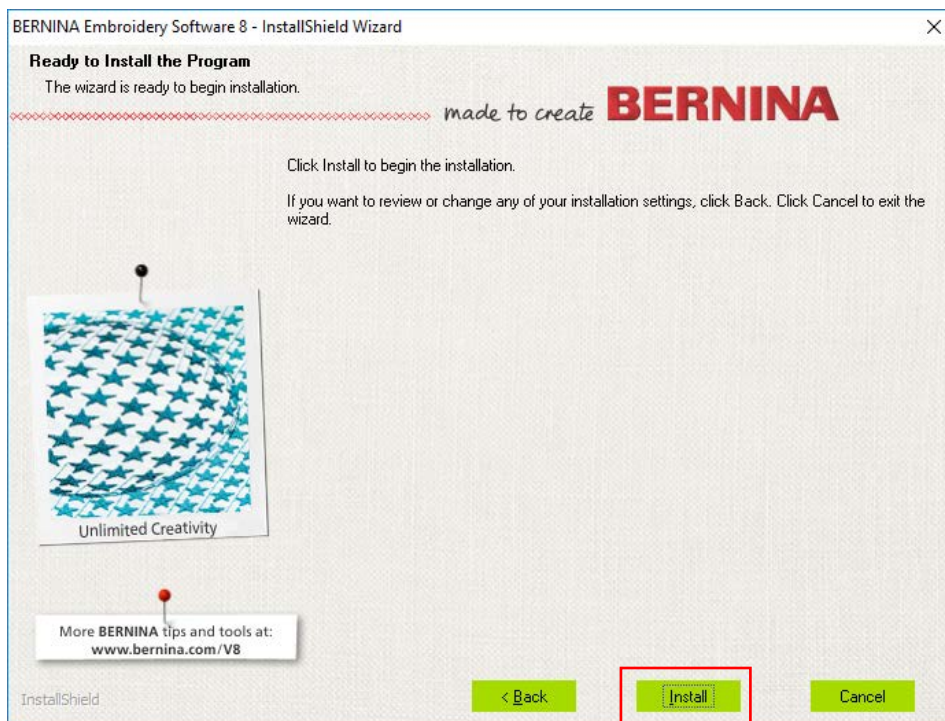
In this update (V8.0T), the existing CorelDRAW Essentials X6 gets replaced by the new CorelDRAW Graphics Suite SE. In the window below you are prompted to uninstall CorelDRAW Essentials X6 as it is no longer used in the V8 software. Please check the box to uninstall it if you are not using it in other software. After this update the Artwork Canvas will only connect to the new CorelDRAW Graphics Suite SE. Therefore please make sure to install it.



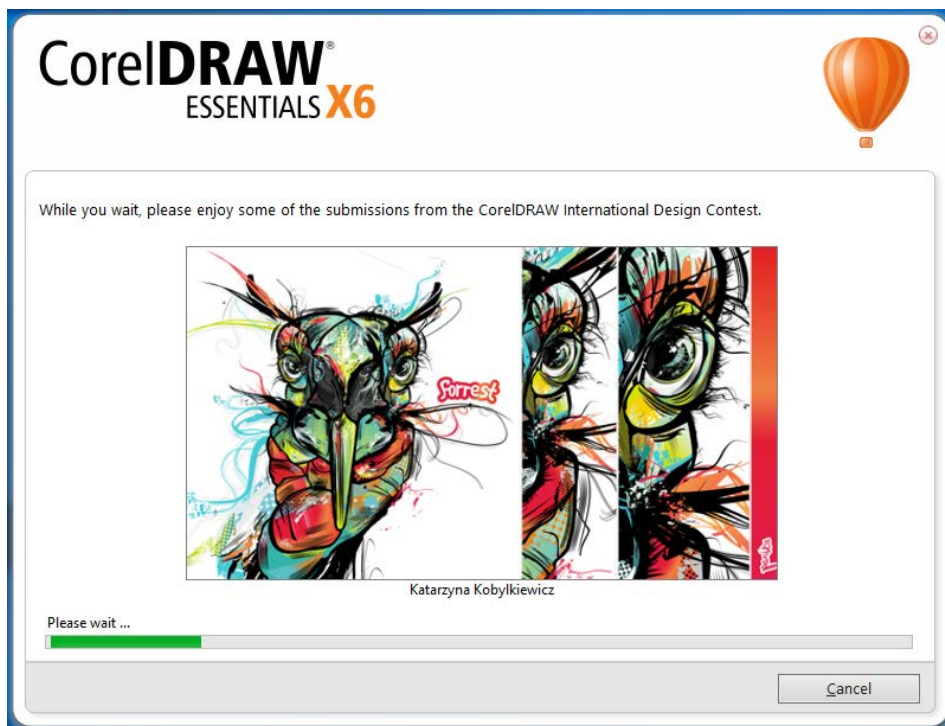
Note: CorelDRAW Graphics Suite SE has enhanced tools and functions. It is 4K and Windows 10 compatible. The Corel CONNECT application replaces the clipart folder. This is an online browser to search and download clipart, photo images, fonts, symbols, objects and file formats.

Start installation

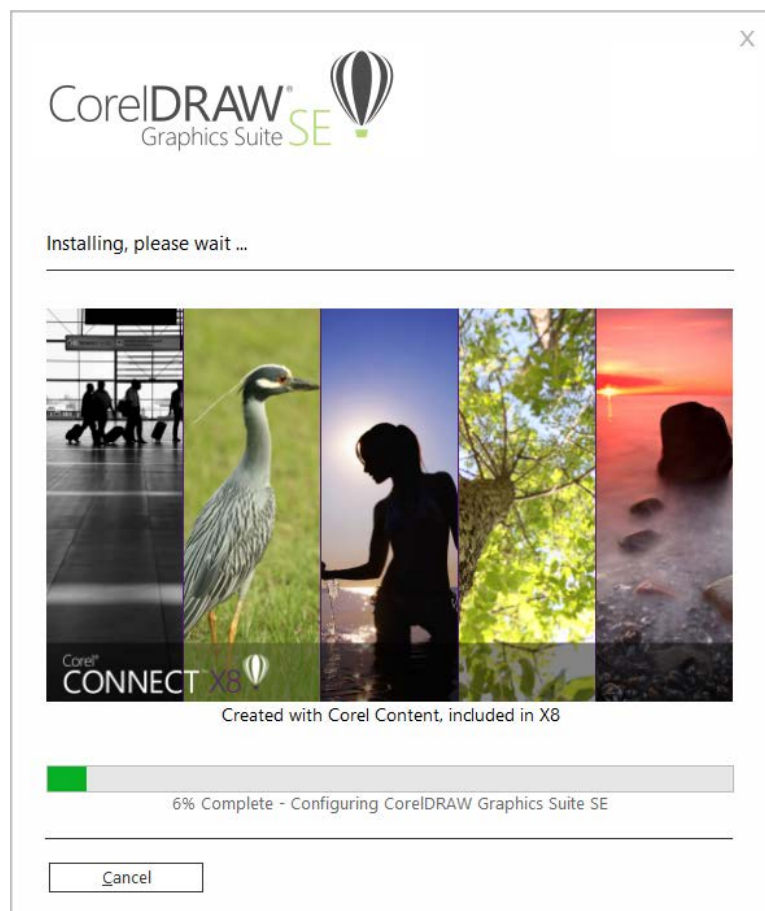
By clicking *Install*, CorelDRAW Essentials X6 is uninstalled and CorelDRAW Graphics Suite SE as well as V8 software will be installed. This may take a while.



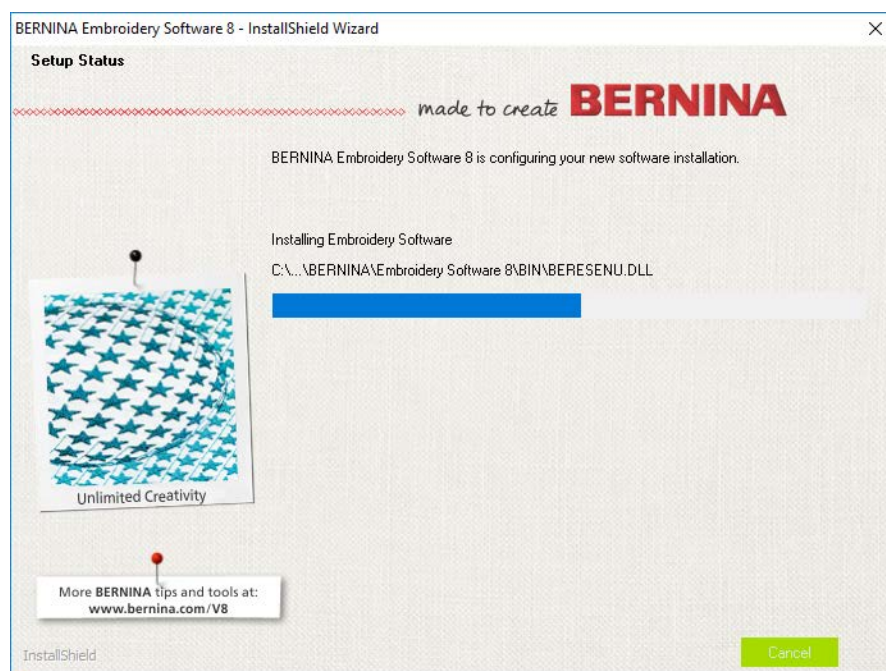
Uninstall CorelDRAW Essentials X6



Install of CorelDRAW Graphics Suite SE

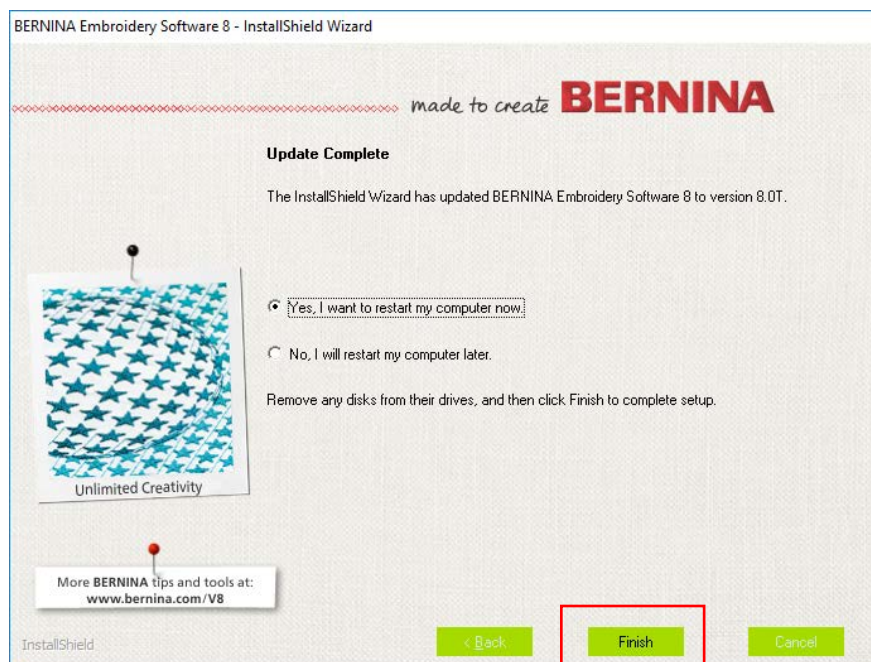


Install of V8.0T update



Restart computer

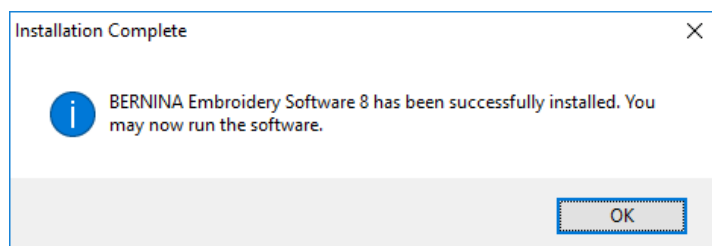
At the end of the installation you are prompted to restart your computer. Select *Yes* and click *Finish* to restart the computer.



Note: If you are using direct connect to your machine. Turn your machine on and plug the cable into your computer before restarting it. This will load all necessary drivers to make the connection work. Make sure to have updated your sewing machine with the latest firmware to assure compatibility with V8 software.

Software update completed

When you have restarted your computer you get an installation complete message. Click *OK*.




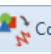



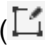

Start V8.0T software

After restart, you will have both V8 software and 4 new Corel logos on your desktop.



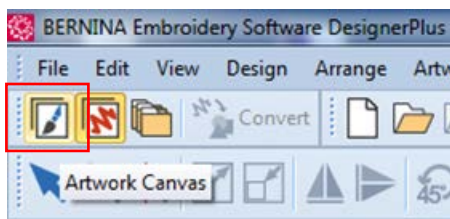
The Corel applications can either be started via desktop icons or the Artwork Canvas in V8. There the applications are located in the menu toolbar, see icons in the brackets ().

- CorelDRAW SE – Vector illustration and page layout (    Convert)

- Corel PowerTRACE – Bitmap-to-vector tracing ( Vectorize Bitmap)
- Corel PHOTO-PAINT – Image editing ( Edit Bitmap...)
- Corel CONNECT – Content finder ( Connect)
- Corel CAPTURE – Screen capture tools

Register CorelDRAW

When you switch to Artwork Canvas for the first time a pop-up appears, see below.



You must register to use the new CorelDRAW Graphics Suite SE. The registration enables you to use library of CorelCONNECT and additional apps.

CorelDRAW[®] Graphics Suite SE

Wir möchten Sie besser kennen lernen

Mit einer Anmeldung erhalten Sie Zugriff auf Online-Inhalte. Erstellen Sie jetzt Ihr Corel-Konto, um sich anzumelden. Wenn Sie bereits ein Konto haben, aktivieren Sie das Kontrollkästchen und geben Sie Ihre Anmeldeinformationen in die vorgesehenen Felder ein.

☐ Ich habe bereits ein Konto

E-Mail

Kennwort

Kennwort bestätigen

USA

☒ Erhalten Sie wichtige Software-Updates und exklusive Angebote.

☐ Beteiligen Sie sich an Corels Marktforschungen.

[Datenschutzrichtlinie](#). Die Daten werden vertraulich behandelt und nicht an Dritte weitergegeben.

[Weiter](#)

CorelDRAW[®] Graphics Suite SE

Sie sind angemeldet und Ihr Produkt ist authentifiziert

Ihr Produkt wurde unter Verwendung des folgenden Kontos authentifiziert:

urs.schachenmann@bernina.com

Sie haben nun Zugriff auf:

- Online-Inhalte wie Cliparts, Fotos, Vorlagen und Musterfüllungen
- Eine umfassende Online-Auswahl an Schriften
- Leistungs- und Stabilitätsaktualisierungen

[Weiter](#)

If you do not see the window above, look at the task bar at the bottom and click on the balloon icon.



Confirm Corel account to complete Corel installation

Go to your e-mail account and validate your Corel version. Click on the hyperlink *Validate Account* to confirm your e-mail address. Only now you can use Corel or the Artwork Canvas!

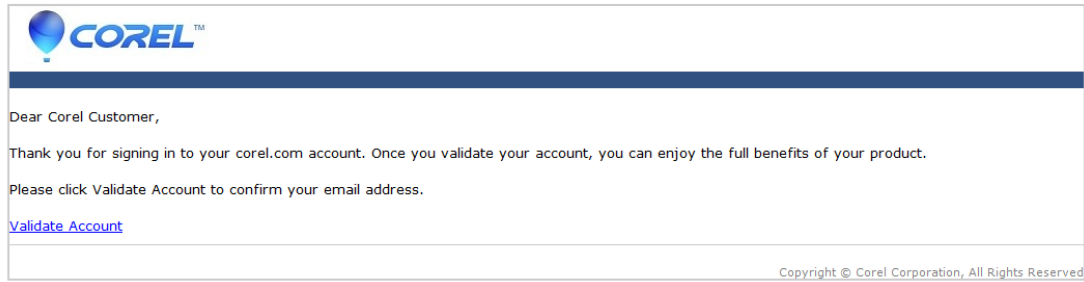
Validate Your Corel.com Account

ITMailer@corel.com

Wenn Probleme mit der Darstellungsweise dieser Nachricht bestehen, klicken Sie hier, um sie im Webbrowser anzuzeigen.

Gesendet: Do 19.01.2017 15:45

An: Schachenmann Urs



Now you have completely finished the V8.0T update installation.

FAQs

Manuals and release notes not accessible

Symptom

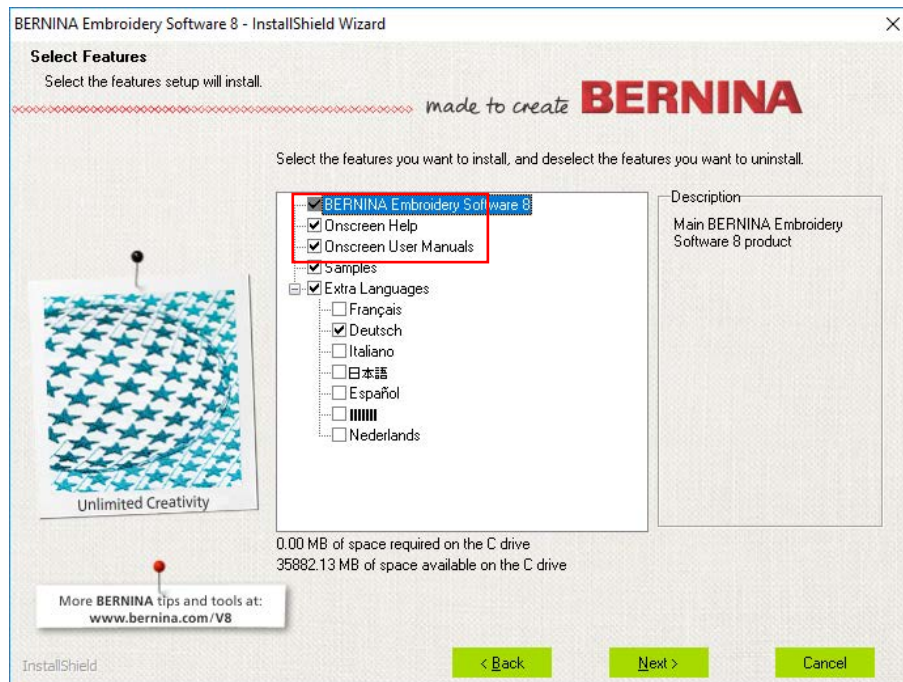
No reference manual access or release notes visible. Or message, 'Acrobat failed to connect to a DDE Server'.

Solution

Check that you have installed the latest Adobe Reader. Repair Adobe Acrobat Reader to display the documents. Go to the Control Panel > Program and Features and select Adobe Reader. Then click on the Change button on top. In the next window select Repair. Now the Adobe Reader should work.

If this does not help got to: <https://helpx.adobe.com/acrobat/kb/cant-open-pdf.html>

If manuals are completely missing, repair V8 and reinstall documents: For this go to *Control panel > Program and features*. Select BERNINA Embroidery Software 8 and click on the *Change* button. Then in the next dialog continue with *Modify*, then select the *Onscreen Help* and *Onscreen User Manuals*, see below. Click on *Next* to install those missing items.



All files can also be found under the following path: [C:\Program Files \(x86\)\BERNINA\Embroidery Software 8\BIN\ENU](C:\Program Files (x86)\BERNINA\Embroidery Software 8\BIN\ENU)

Corel error message

Symptom

After installing the V8 software update, the Artwork Canvas is not working. It gives you the message CorelDRAW® SE is not installed or is not configured to interact with DesignerPlus. To enable the interaction please install CorelDRAW® SE and restart DesignerPlus. If you do not register Corel, you will get an error message, when switching to the Artwork Canvas.

Solution

First, make sure CorelDRAW is registered as described above. See [Register Corel](#).

If CorelDRAW is not installed, reinstall it. To re-install Corel from scratch, you will need to locate the installation EXE in the Temp folder of your hard drive if the update has been installed. Alternatively, in the case of a full install, run it from the Corel setup folder. When you switch to the the Artwork Canvas for the first time, you will be prompted to register and validate your confirmation e-mail.

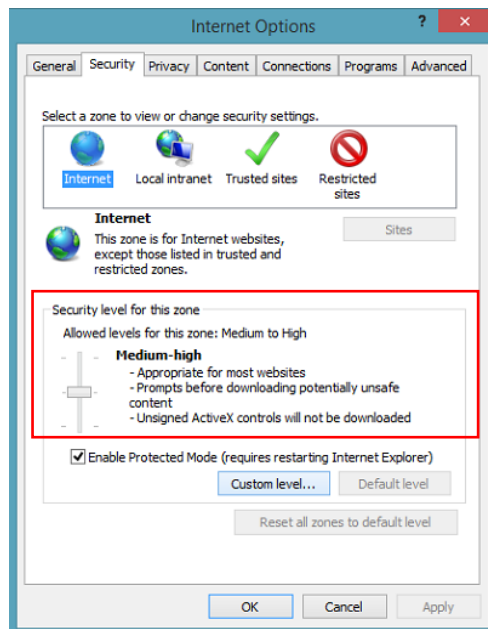
Time-out error

Symptom

If the browser security settings are set too high, a timeout error or a failure to start the download might appear.

Solution

The fix is to open the browser security and set them back to the recommended settings. Go to: *Extras (Alt X) > Internet Options (t) > Security tab* and set the security level to medium-high.



ADX Error Message – Direct Connect

Symptom



Solution

Update your machine with the newest firmware. Turn on machine. Connect machine with PC and restart PC to load the missing drivers.

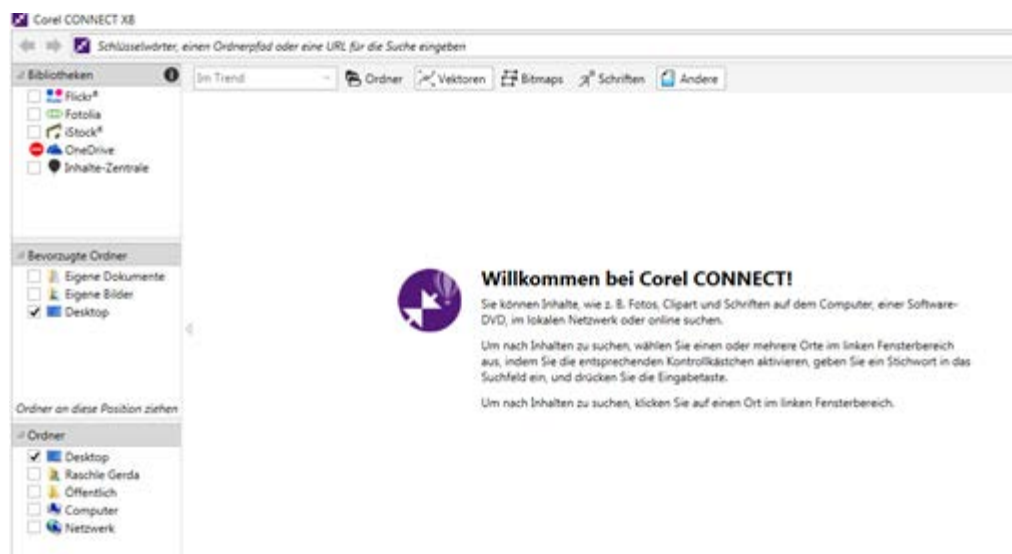
Missing Clipart folder

Symptom

Clipart folder is missing.

Solution

The Clipart folder is replaced by Corel Connect. This is a new online-based library to browse for all kinds of designs.



ADX Output – EConPC

Symptom

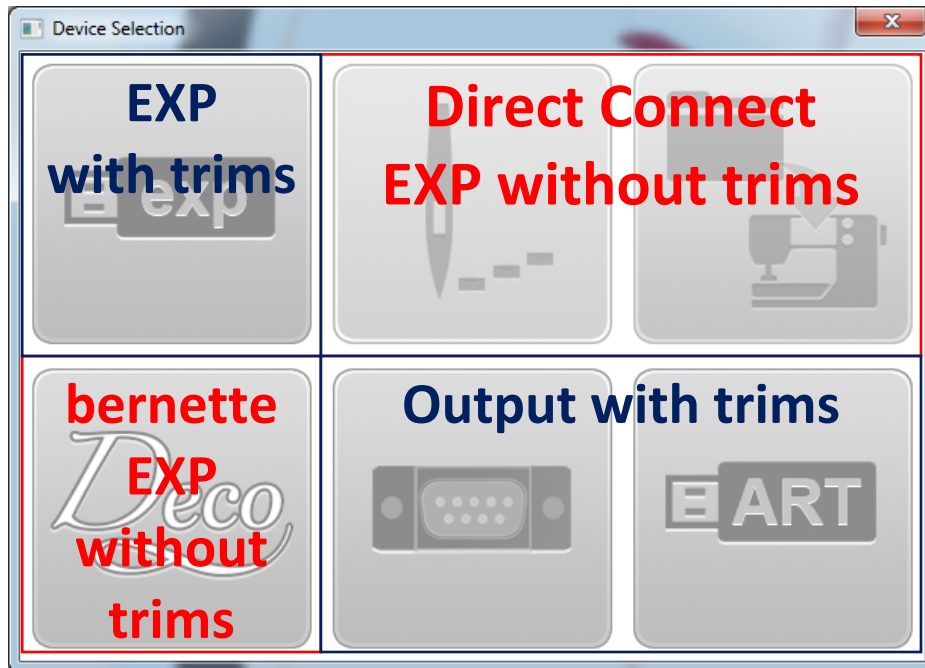
Old BERNINA aurora as well as bernette machines could not read trim command, thus resulting in various errors.

Solution

ADX interface was changed to output EXP with and without trims. Export file dialog remained unchanged, means outputs trims.

Logic table:

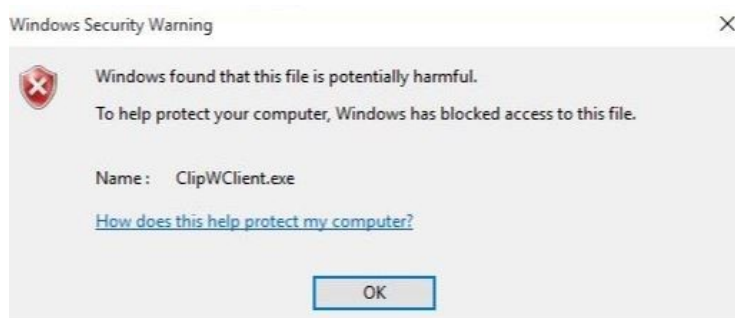
- Direct connect (EConPC) outputs no trims to be compatible with old BERNINA machines
- Deco also outputs no trims to be compatible with bernette / Deco machines



Windows blocks .exe application

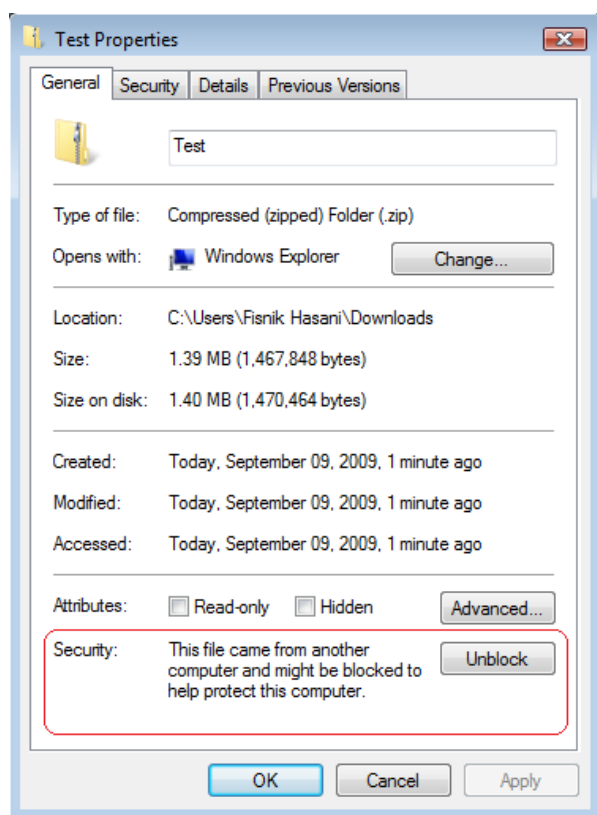
Symptom

Windows found that this file is potentially harmful. To help protect your computer, Windows has blocked access to this file.



Solution

File security, this file came from another computer and might be blocked to help protect this computer. To fix, right-click the file and click *Unblock* and click *Apply* and *OK*.



License transfer

Included on the USB stick is a folder called 'LicenseTransfer'. Within that folder you will find a utility called 'BES_V8_RUS.exe'. This allows you to transfer the license from one computer to another. The same folder includes a PDF document called 'BES V8 Transfer Activation' providing instructions on how to use it.

Tip: The same 'LicenseTransfer' folder is included with the BERNINA installation under C:\Program Files (x86)\BERNINA\Embroidery Software 8.

EULA update

A new EULA is included in the installation with a revised product license agreement. New wording is as follows:

PRODUCT LICENSE AGREEMENT

BERNINA grants you, the purchaser, with a single user, non-exclusive, non-transferable license to use the Products according to the following terms:

You MAY: 1. Install and use the Product on up to three different devices using the Product key supplied. 2. Make one (1) hard copy of the Product electronic user manual documentation (for personal or company use only).

Solving problems in BERNINA V8.0

If you encounter a problem, refer to the following sources for help:

- BERNINA V8.0 Reference Manual - select Help > Reference Manual
- BERNINA V8.0 Online Help - select Help > Help Topics
- Windows Online Help - select Start > Help
- Windows manual
- Documentation supplied with your hardware.

Getting help

If you are unable to solve a problem, you should contact your BERNINA Dealer. Before seeking help, check that your PC meets the system requirements, and check the Troubleshooting chapter of the Online Manual.

Copyright

Copyright 1997-2017 by Wilcom Pty Ltd, Wilcom International Pty Ltd. All rights reserved.

No parts of this publication or the accompanying software may be copied or distributed, transmitted, transcribed, stored in a retrieval system or translated into any human or computer language, in any form or by any means, electronic, mechanical, magnetic, manual, or otherwise, or disclosed to any third party without the express written permission of:

Wilcom Pty Ltd. (A.B.N. 62 062 621 943)
Level 3, 1-9 Glebe Point Rd, Glebe
Sydney, New South Wales, 2037, Australia
PO Box 1094 Broadway NSW 2007
Phone: +61 2 9578 5100
Fax: +61 2 9578 5108
Web: <http://www.wilcom.com>

Portions of the imaging technology of this product are copyrighted by AccuSoft Corporation. The EPS File Import/Export Converter used in this product is copyrighted by Access Softek, Inc.

Contact

If you have any questions, please contact your BERNINA Dealer, distributor, or BERNINA International AG CH-8266 Steckborn/Switzerland.

Tel: (41) 52-762 11 11
Fax: (41) 52-762 16 11
Web: www.bernina.com