



## Christmas Stocking

Welcome Christmas heel and toe,  
Come and fill us ere you go!

*By Mary Mapes Dodge.*



*One of the best Christmas presents ever received is one that is from the heart, so why not give them this simple little stocking filled with kisses and dreams comes true.*

### Method

1. Iron dream weave magic to the back of velvet. Tip: always iron velvet from the wrong side to ensure that the pile is not flattened.
2. Insert Metafil needle.
3. Wind bobbin with gold sewing thread and thread top of machine with metallic thread.
4. Slightly loosen of top tension to allow for the metallic thread to feet through the tension guides without stretching too much.
5. Set machine on a small zig zag to stitch over the fine gold cord.
6. Create a diagonal grid approx 4cm wide all over the velvet big enough for two of the stocking patterns to be cut the same, use the seam guide that fits into the back of the foot as a guide.
7. Cut out stocking pattern making sure that the front and back are the same.
8. Iron dream weave magic to the wrong side of the gold silk fabric, this gives the silk body and strength.
9. Cut one gusset pattern as well as 2 of the stocking lining pattern.
10. Fold remaining gold silk in half with right sides together. Trace around the cuff pattern twice. Use this line as your stitching line.
11. Wind a bobbin with metallic thread and insert into bobbin case.
12. Attach the Vari-Overlocker foot #2 and select either blanket stitch or a zig zag stitch. Place wrong sides of stocking panels together and sew from top edge to the toe and the opposite side down to the base leaving the rest unstitched. The Edgestitch Foot allows the fabric to lay flat when it is stitched.
13. Insert the gusset starting at the tip and work all the way round back to the tip on the other side, this becomes the sole of the stocking. If you don't wish to see the stitching on the outside of the stocking you can also place right sides together and straight stitch together using a ¼" seam allowance and sew with normal sewing thread.
14. Attach Open Embroidery Foot # 20. Select a small zig zag stitch and attach heavier gold cord to the very edge of the seam allowance, giving a lovely finish to the edge of the stocking. Foot # 20 allows you to see were you are going at all times.
15. Insert stuffing into the stocking, just enough to fill out the main body of the stocking and a little up the sides.
16. Replace metallic thread, top and bottom with gold sewing thread. Return top tension back to normal and replace metafil needle with a size 80 jeans needle.
17. Stitch around the cuffs, leave the top edge (straight edge) unstitched. Clip and turn through. Press flat. Edgestitch around the cuffs with Edgestitch Foot #10 and needle position slightly to the left for a fine topstitch.
18. Place right sides of the stocking lining together and sew a ¼" seam around the three sides of the stocking, leaving the top edge open.
19. Insert the stocking lining into stocking, wrong sides together and pin.
20. Attach the front and back cuff pieces to the top of the stocking.
21. Stitch around the top of the stocking using a ¼" seam allowance.
22. Cut a 4cm strip of velvet approx 50cm long for binding around the top of the stocking.
23. Fold fabric in half length wise to find the centre, pin centre of the fabric strip to the centre front of the stocking at seam. Stitch around the top of the stocking.
24. Fold fabric strip in have width wise and sew around both ends to create ties. Turn under seam allowance through and hand stitch to the wrong side along stitching line. Tie together.
25. Embellish the cuffs, both back and front with charms.
26. Hand sew small bells to each tip of the cuffs with an added charm.
27. Attach large bell to the tip of the toe on the stocking.
28. Fill stocking and enjoy giving it to someone special.

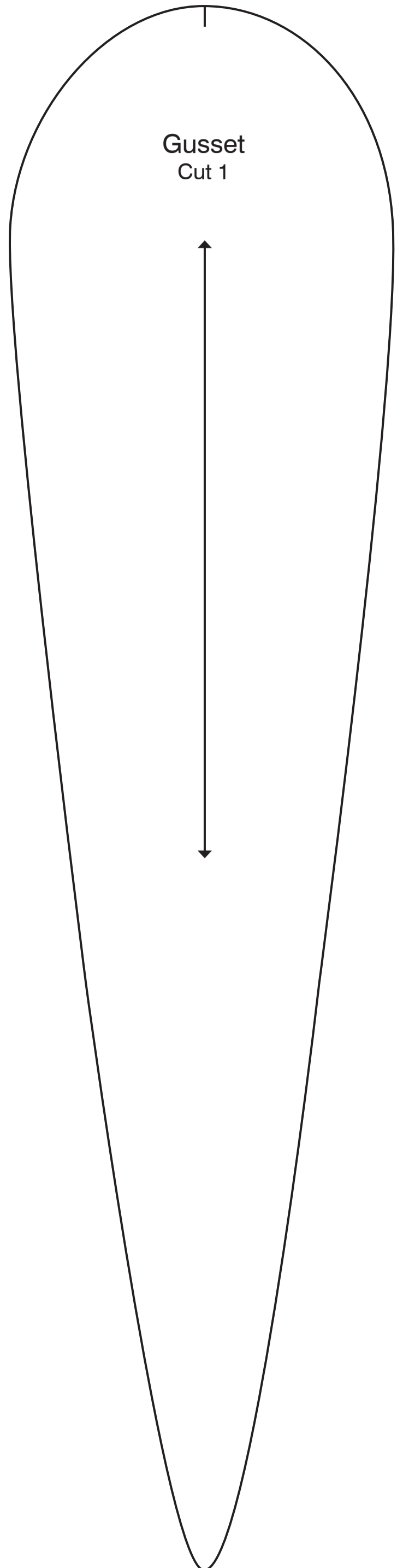
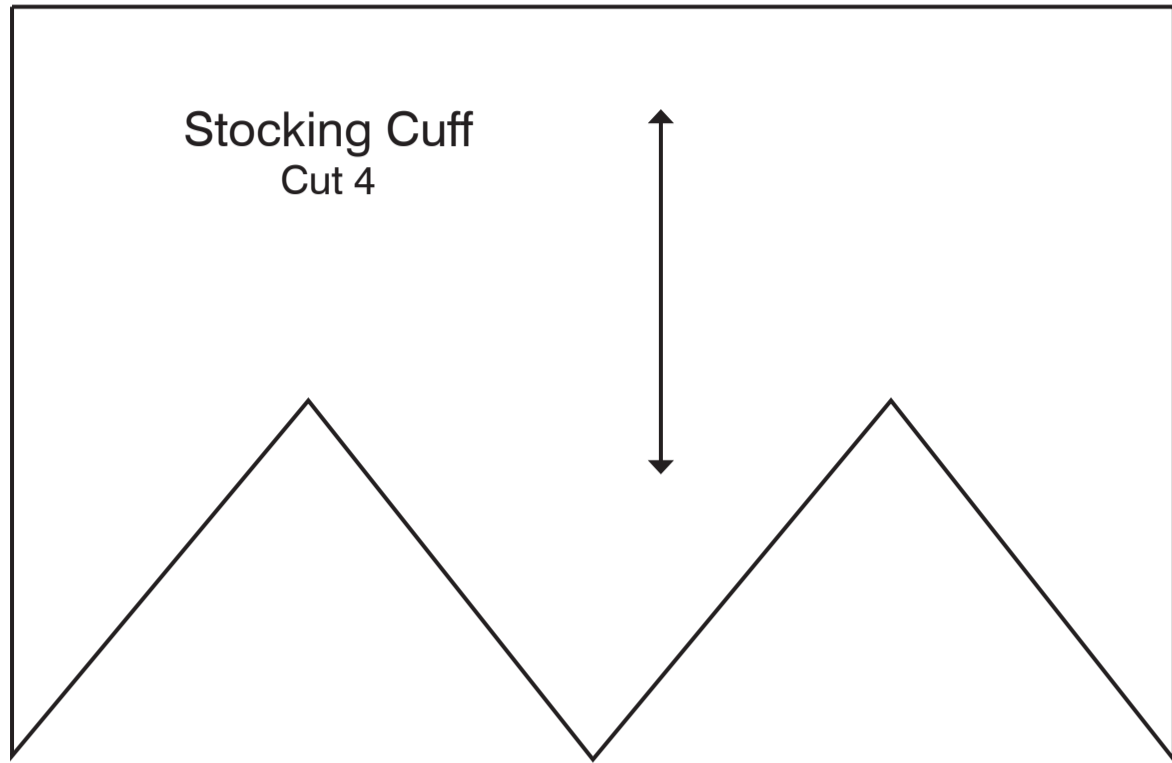
### Materials List

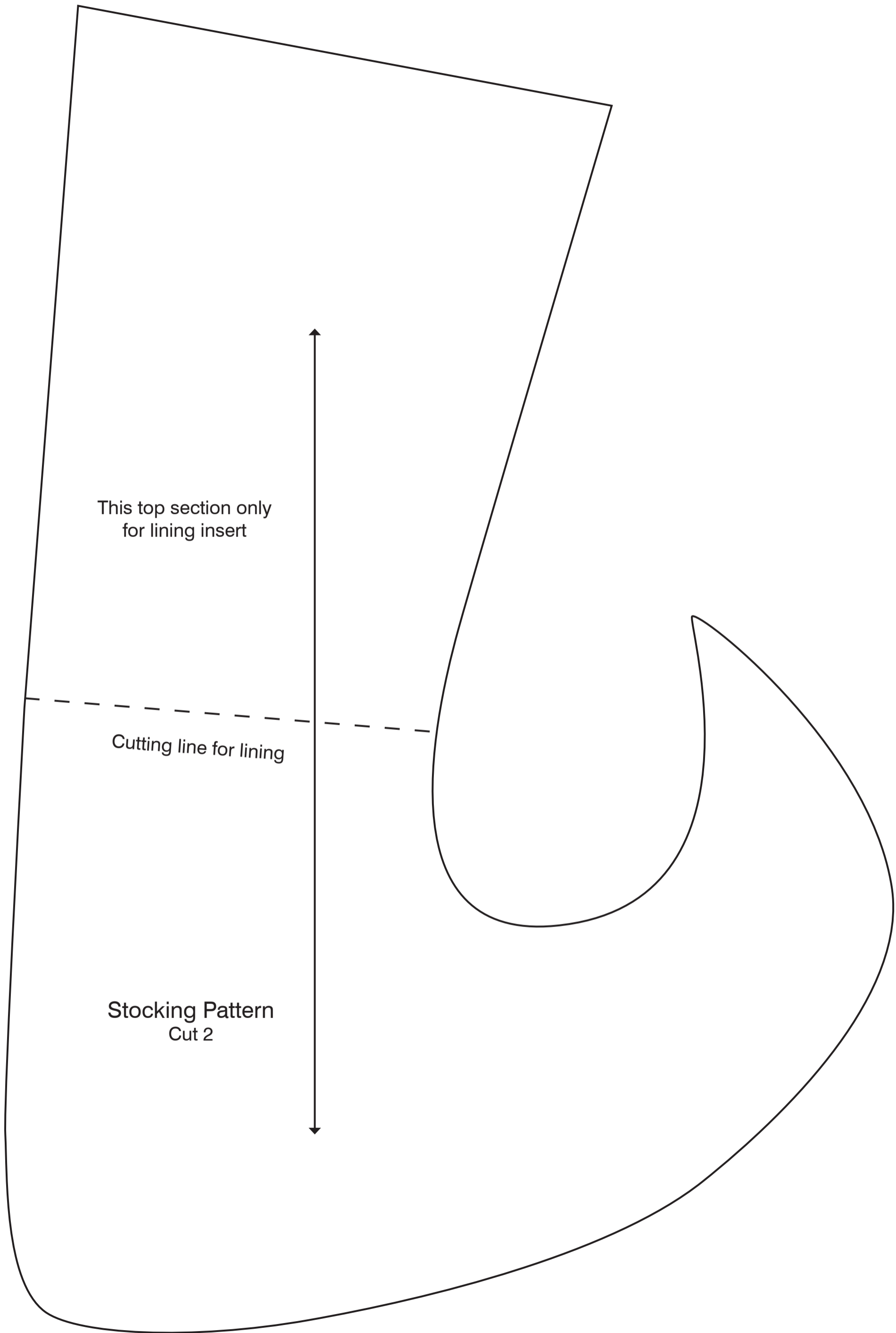
- 45cm x red velvet
- 45cm of dream weave magic
- 40cm x old gold silk fabric
- Gold metallic thread
- Gold sewing thread
- Size 80 Jeans needles
- Size 80 Metafil needle
- 6mtrs of very fine gold cord for couching velvet
- 3mtrs slightly heavier gold cord for edge of blanket stitch
- 6 x small gold bells
- 1 x large gold bell
- 6 x charms for points of cuffs
- 10 special charms for around cuffs
- Hand sewing needle
- Fibre filling
- Embroidery foot #6 with seam guide
- Open embroidery foot #20
- Edgestitch Foot #10
- Vari-Overlock Foot #2

# *Christmas Stocking*

## Printing Instructions

Print all pages on A3 size paper at 100%





This top section only  
for lining insert

Cutting line for lining

Stocking Pattern  
Cut 2